

Supplementary information

Dissolvable Mg/Al layered double hydroxides and surfactant as extractant for trace analysis of benzoylurea insecticides by high performance liquid chromatography

Yanawath Santaladchaiyakit^{1,*} and Supalax Srijaranai²

¹Department of Chemistry, Faculty of Engineering, Rajamangala University of Technology Isan, Khon Kaen Campus, Khon Kaen 40000, Thailand

²Materials Chemistry Research Unit, Department of Chemistry and Center of Excellence for Innovation in Chemistry, Faculty of Science, Khon Kaen University, Khon Kaen 40002, Thailand

*Corresponding author: Tel.: +66 4333 8870 ext. 2309, 2390; Fax: +66 4333 8869

E-mail: sanyanawa@gmail.com, yanawath.sa@rmuti.ac.th (Y. Santaladchaiyakit)

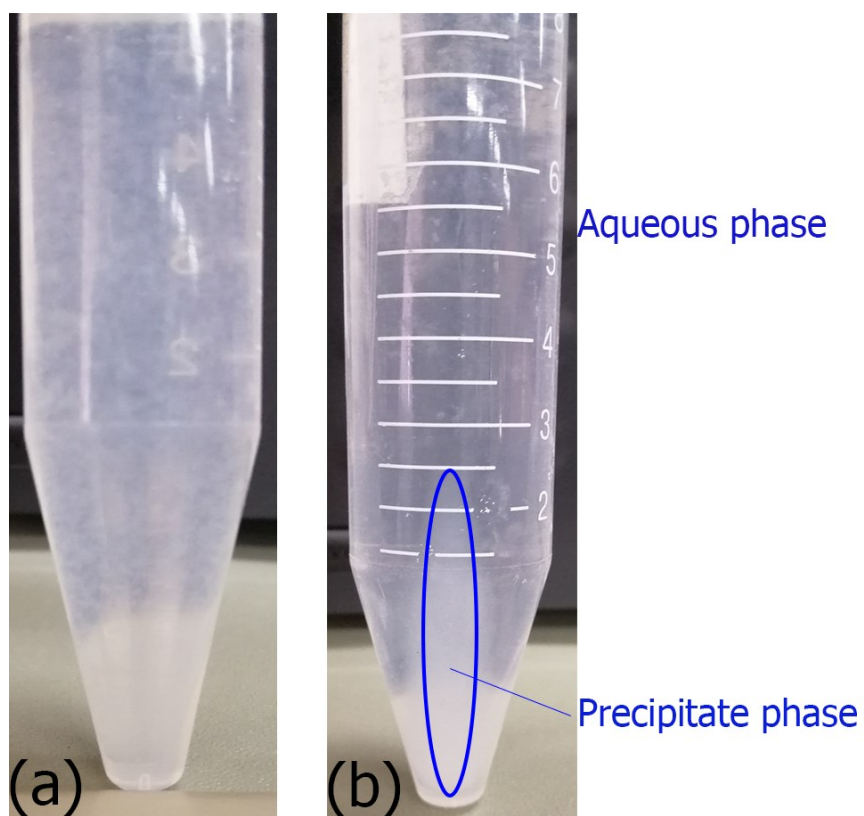


Figure S1 The photographs of the solutions (a) during extraction and (b) after centrifugation.

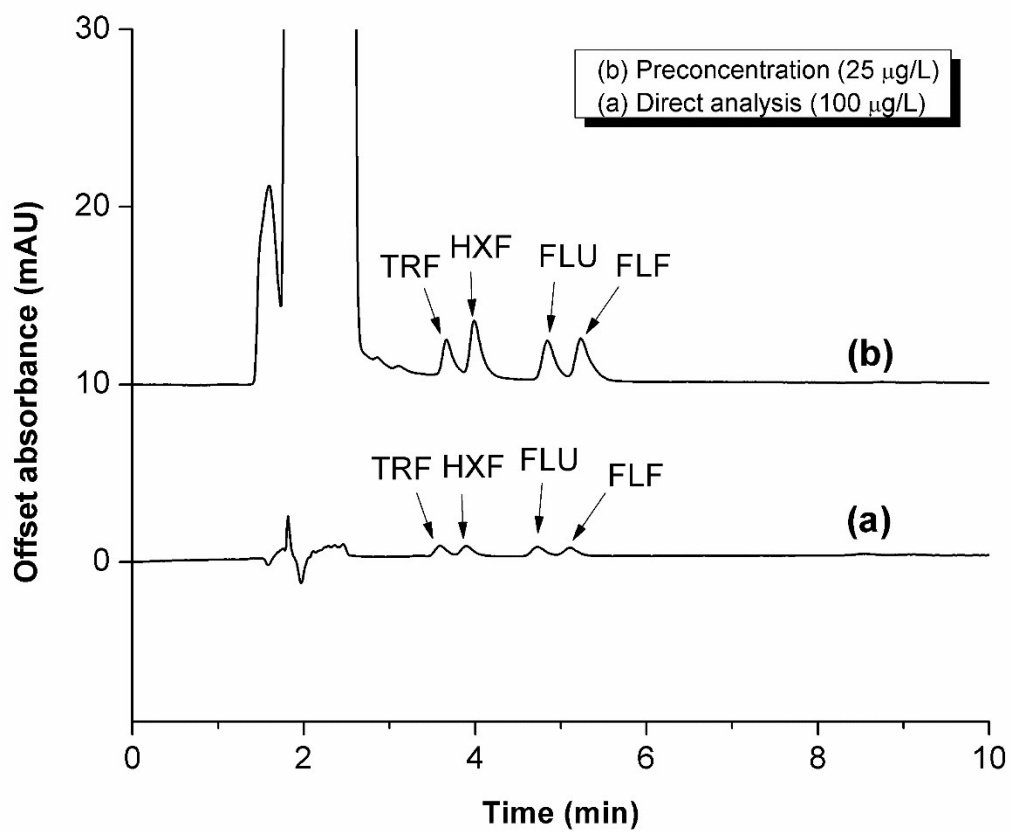


Figure S2 Overlaid chromatograms of (a) pre-concentration of target analytes using LDHs and (b) without pre-concentration (direct analysis).