

Transformation of γ -valerolactone to 1,4-pentanediol and 2-methyltetrahydrofuran over Zn-promoted Cu/Al₂O₃ catalyst
(Supporting information)

*Qiang Liu^{a,b,c}, Zhenbo Zhao^b, Masahiko Arai^{a,c}, Chao Zhang^{*a,c}, Ke Liu^{a,b,c}, Ruhui Shi^{a,c}, Peixuan Wu^{a,c}, Zhuangqing Wang^{a,c}, Weiwei Lin^{a,c}, Haiyang Cheng^{a,c}, and Fengyu Zhao^{*a,c}*

^a State Key Laboratory of Electroanalytical Chemistry, Changchun Institute of Applied Chemistry, Chinese Academy of Sciences, Changchun 130022, PR China

^b School of Chemistry and Life Science, Changchun University of Technology, Changchun 130022, PR China

^c Jilin Province Key Laboratory of Green Chemistry and Process, Changchun Institute of Applied Chemistry, Chinese Academy of Sciences, Changchun 130022, PR China

*Corresponding author, Tel:+86-431-85262410; Fax: +86-431-85262410;

E-mail address: czhang@ciac.ac.cn, zhaofy@ciac.ac.cn

Table S1. Amounts of Cu and Zn species loaded in the Al₂O₃-supported catalysts measured by ICP

Entry	Catalyst ^a	Loading		
		Cu (wt.%) ^b	Zn (wt.%) ^b	Zn/Cu (-) ^c
1	Cu/Al ₂ O ₃	9.9	/	/
2	Zn _{0.5} Cu/Al ₂ O ₃	9.5	4.5	0.4
3	Zn _{1.0} Cu/Al ₂ O ₃	8.4	7.9	0.8
4	Zn _{1.5} Cu/Al ₂ O ₃	7.9	10.7	1.3
5	Zn _{2.0} Cu/Al ₂ O ₃	6.6	13.2	1.9

a. The nominal Cu loading is 10% (Cu/Al₂O₃ in weight).

b. Cu/Al₂O₃, Zn/Al₂O₃ in weight measured by ICP.

c. Molar ratio

Table S2. The amounts of Cu and Al species in the fresh Cu/Al₂O₃ and used Cu/Al₂O₃ catalysts measured by ICP

Entry	Catalyst	Amount	
		Cu (wt.%) ^a	Al (wt.%) ^b
1	Cu/Al ₂ O ₃ -fresh	9.9	47.8
2	Cu/Al ₂ O ₃ -used	9.4	47.9

a. The nominal Cu loading is 10% (Cu/Al₂O₃ in weight).

b. The amount of Al of 10%Cu/Al₂O₃ in weight measured by ICP.

Reaction conditions: 0.1 g catalyst, 10.0 mL 1,4-dioxane, 2.0 mmol GVL, 200°C, 4 MPa H₂, 3 h.

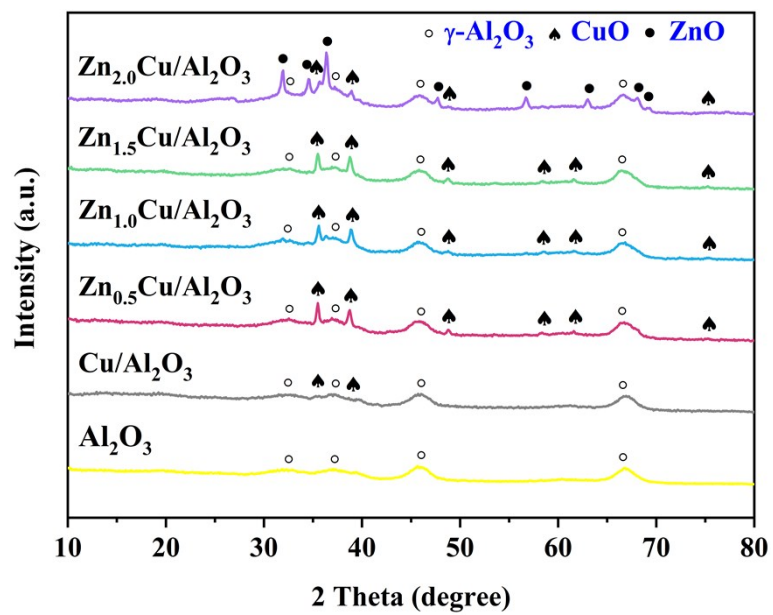


Figure S1. XRD patterns of the calcined $\gamma\text{-Al}_2\text{O}_3$ support and $\text{Cu}/\text{Al}_2\text{O}_3$ and $\text{Zn}_x\text{Cu}/\text{Al}_2\text{O}_3$ with Zn/Cu molar ratios of 0.5, 1.0, 1.5, and 2.0, respectively.

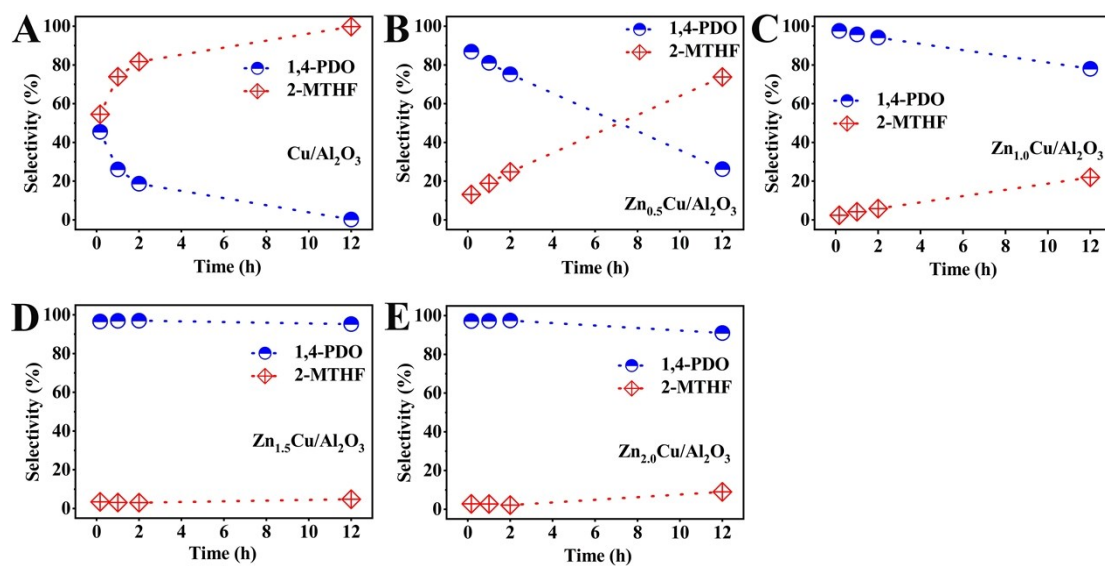


Figure S2. The change of the product selectivity with time for the (A) Cu/Al₂O₃, (B) Zn_{0.5}Cu/Al₂O₃, (C) Zn_{1.0}Cu/Al₂O₃, (D) Zn_{1.5}Cu/Al₂O₃, and (E) Zn_{2.0}Cu/Al₂O₃ catalysts. The data were collected at reaction time of 1/6, 1, 2, and 12 h, respectively. Reaction conditions: 0.1 g catalyst, 10.0 mL 1,4-dioxane, 2.0 mmol GVL, 200°C, 4 MPa H₂.

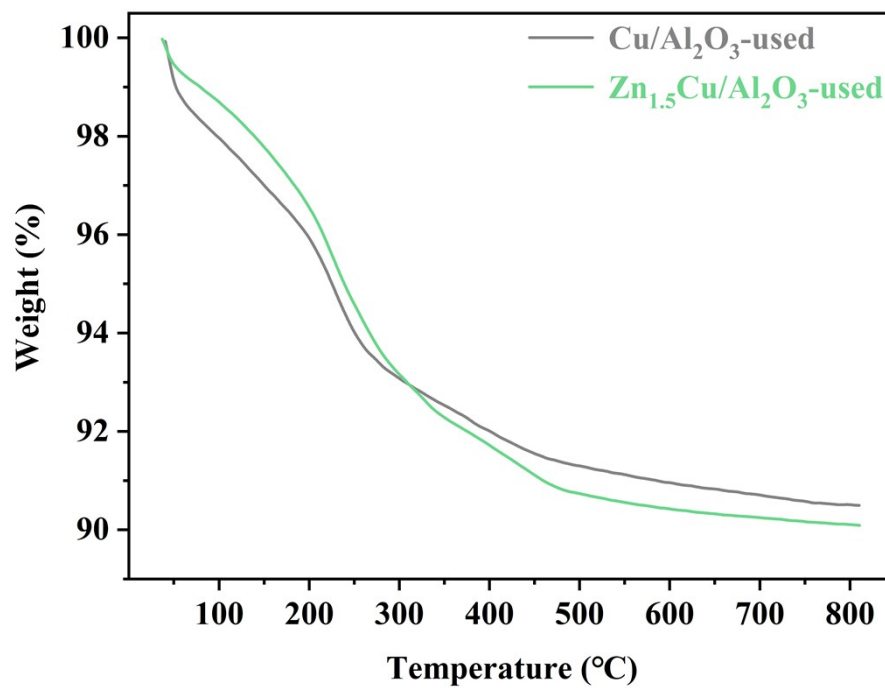


Figure S3. TGA of the used Cu/Al₂O₃ and Zn_{1.5}Cu/Al₂O₃ catalysts.

Reaction conditions: 0.1 g catalyst, 10.0 mL 1,4-dioxane, 2.0 mmol GVL, 200°C, 4 MPa H₂, 3 h.

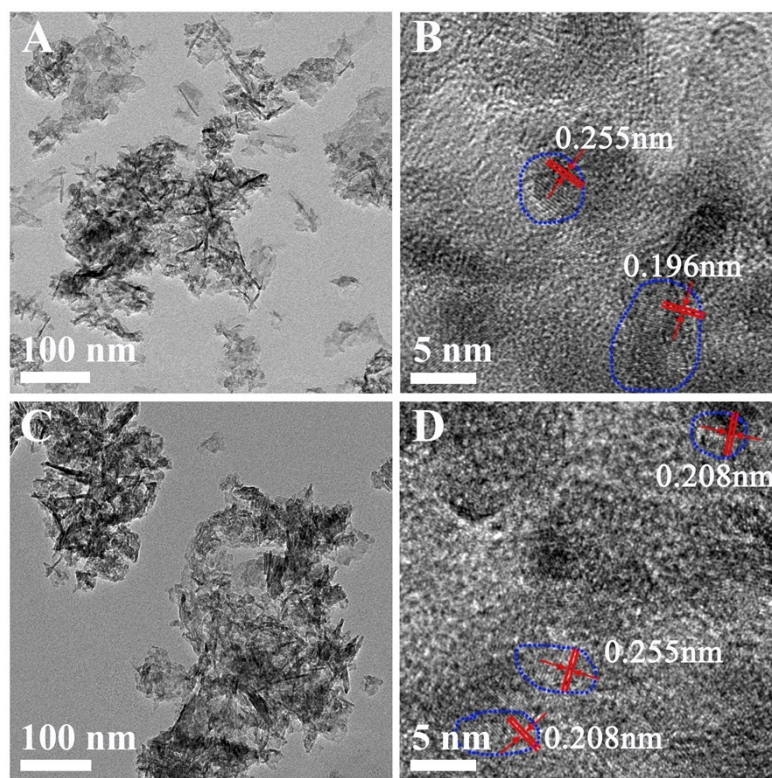


Figure S4. TEM images of the used Cu/Al₂O₃ (A, B) and Zn_{1.5}Cu/Al₂O₃ (C, D) catalysts. The blue rings and red parallel lines showed the lattice of the nanoparticles.