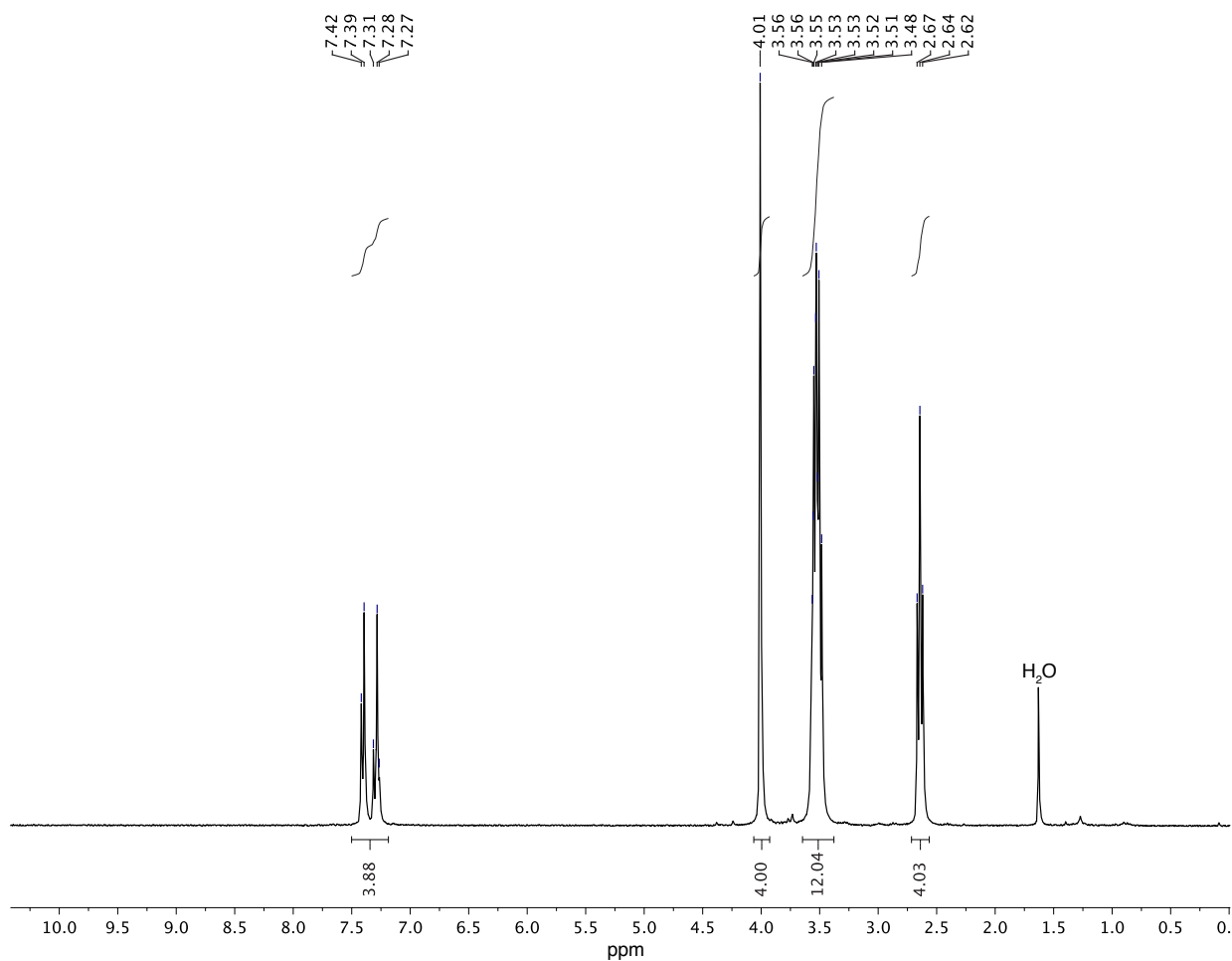


**Electronic Supplementary Information for:**

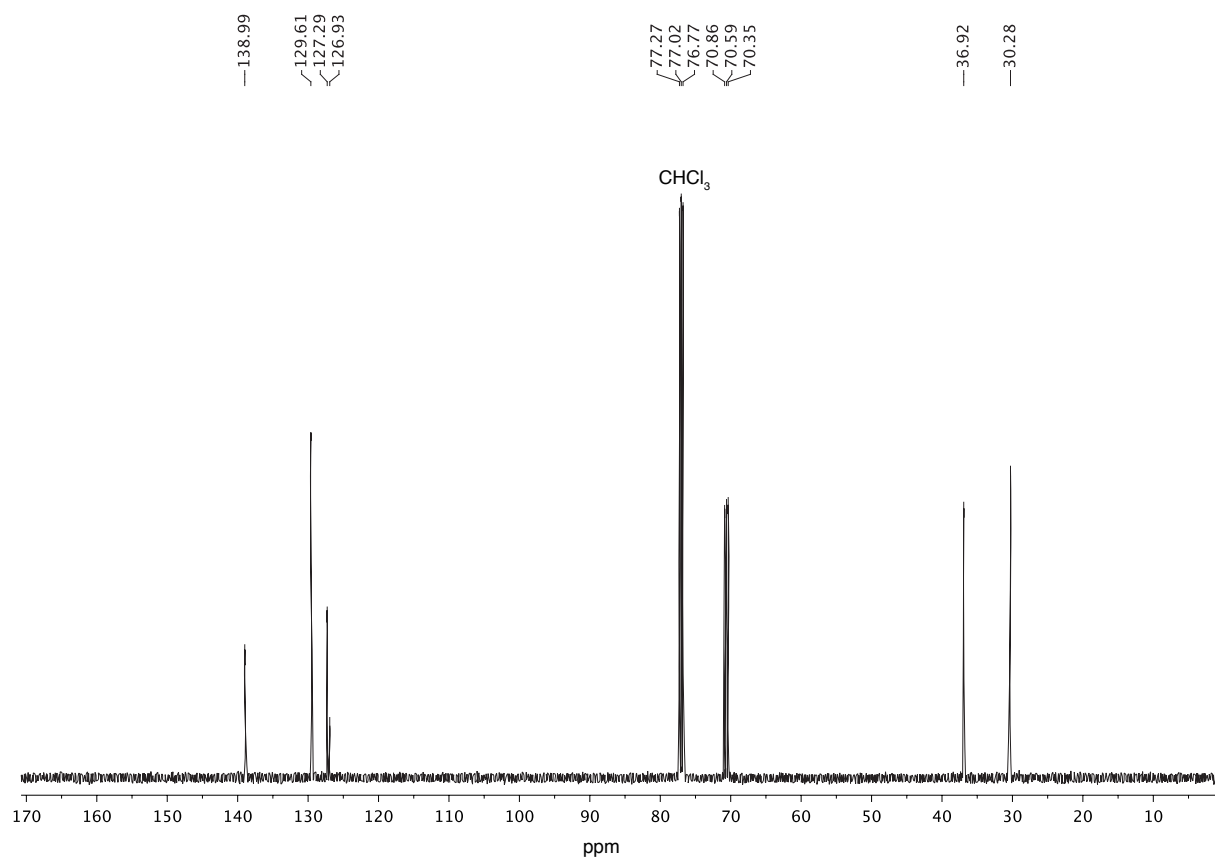
**Nickel Complexes of a Binucleating Ligand Derived from an SCS Pincer**

Sonja M. Peterson, Monte L. Helm, Aaron M. Appel\*

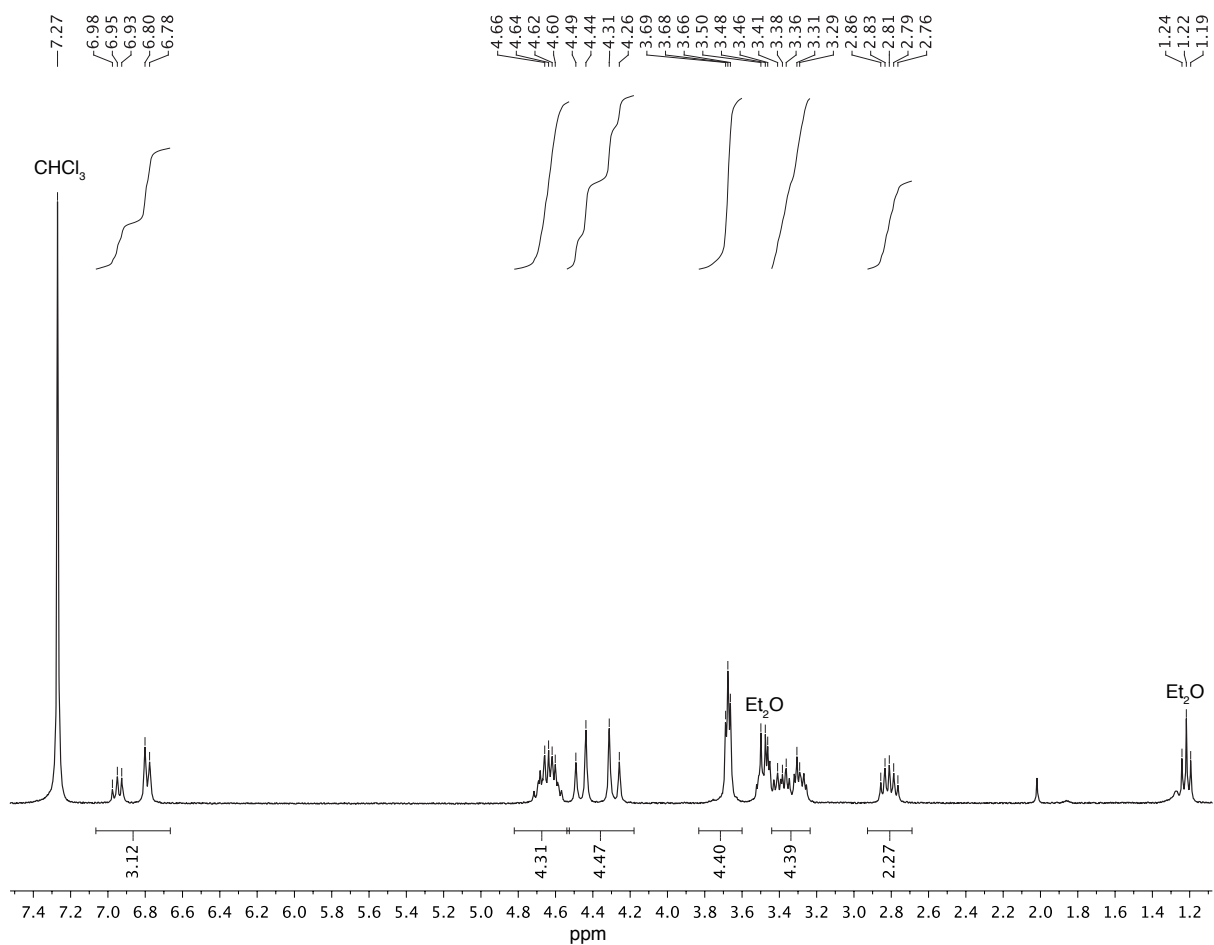
Pacific Northwest National Laboratory, P.O. Box 999, MS K2-57, Richland, WA 99352, USA



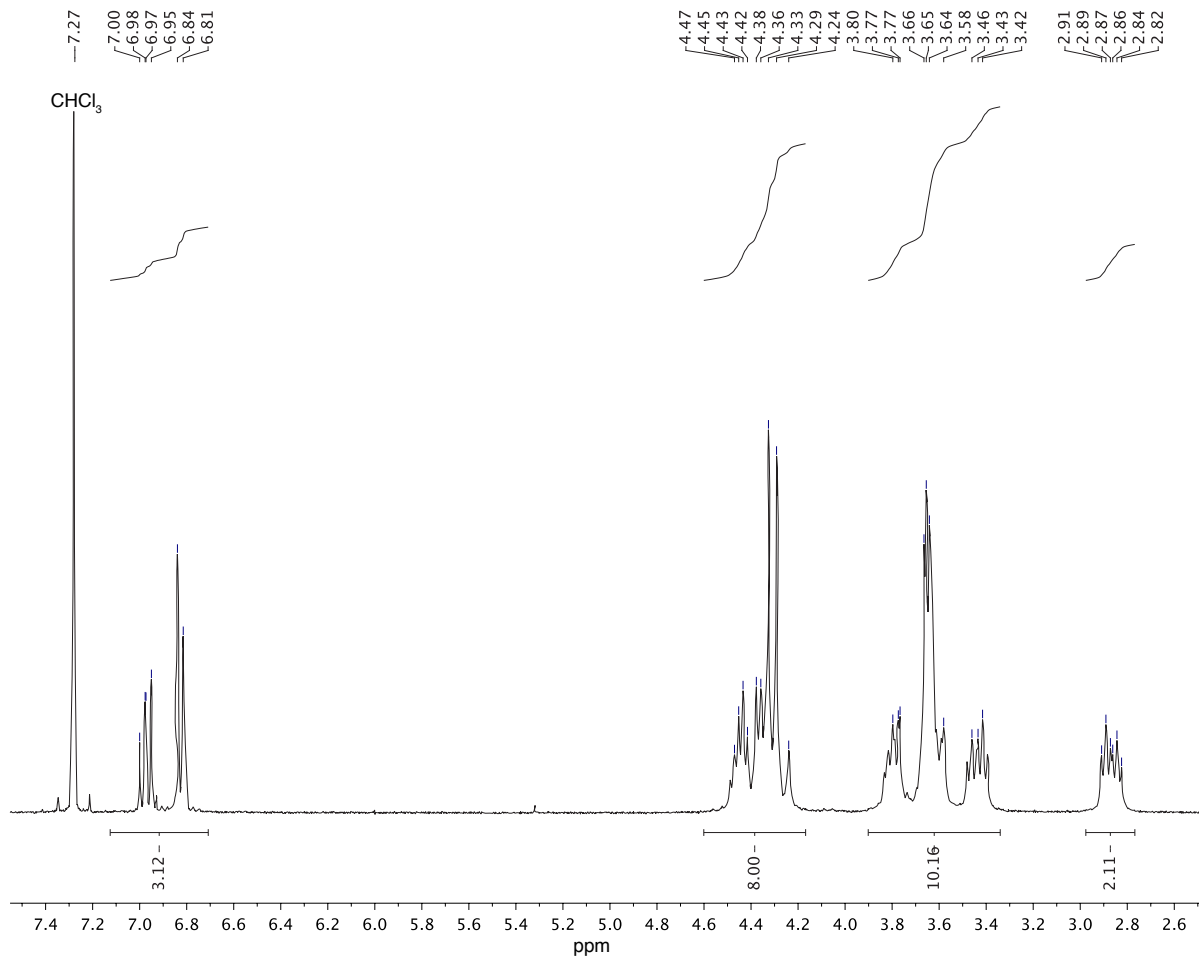
**Figure S1.** <sup>1</sup>H NMR spectrum of the ligand BrL dissolved in CDCl<sub>3</sub>.



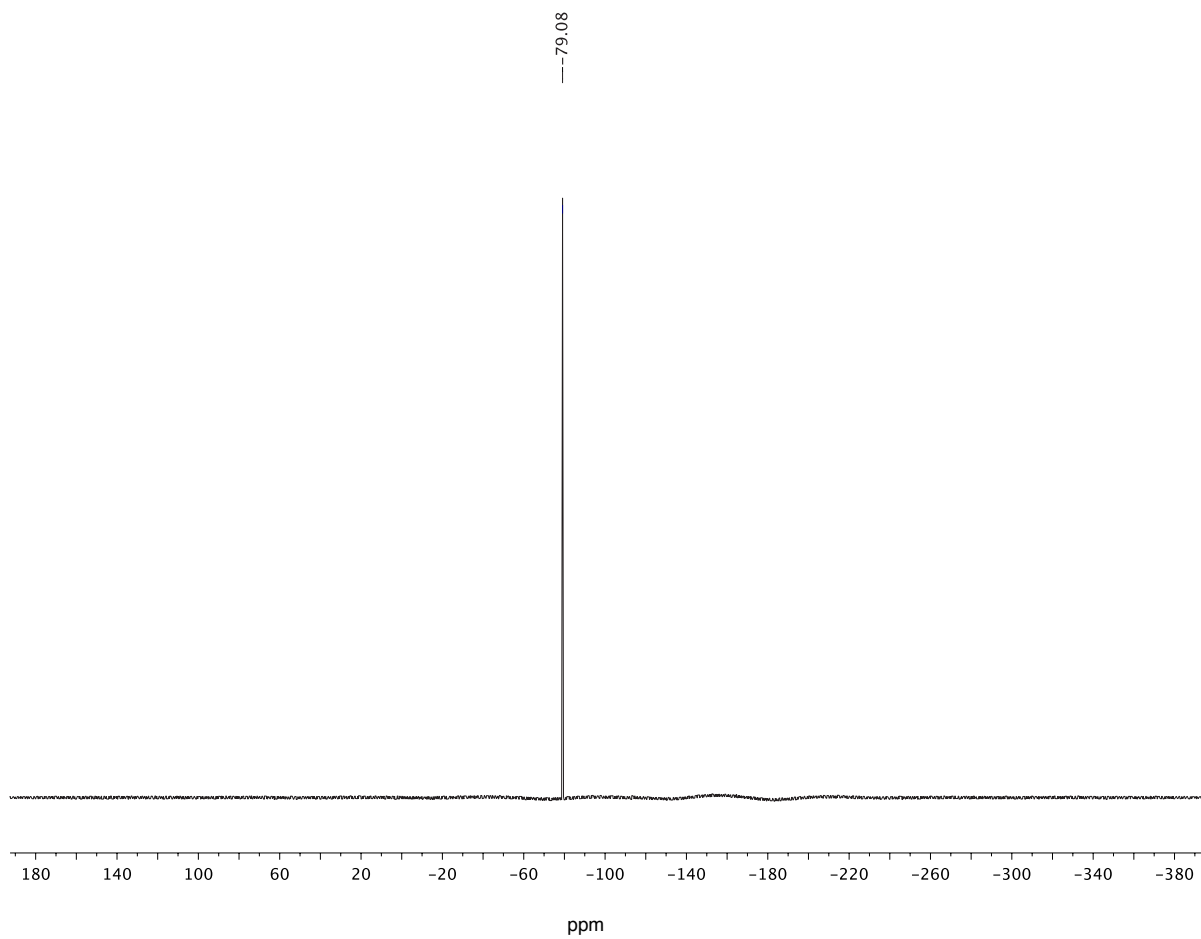
**Figure S2.**  $^{13}\text{C}$  NMR spectrum of the ligand BrL dissolved in  $\text{CDCl}_3$ .



**Figure S3.** <sup>1</sup>H NMR spectrum of the complex Ni(L)Br dissolved in CDCl<sub>3</sub>.



**Figure S4.** <sup>1</sup>H NMR spectrum of the complex [Ni(L)(μ-Br)Li]N(SO<sub>2</sub>CF<sub>3</sub>)<sub>2</sub> dissolved in CDCl<sub>3</sub>.



**Figure S5.**  $^{19}\text{F}$  NMR spectrum of the complex  $[\text{Ni}(\mathbf{L})(\mu\text{-Br})\text{Li}]\text{N}(\text{SO}_2\text{CF}_3)_2$  dissolved in  $\text{CDCl}_3$ .