

Supporting information for “Photo-Assisted Water Oxidation with Cobalt-Based Catalyst formed from Thin-film Cobalt Metal on Silicon Photoanodes”

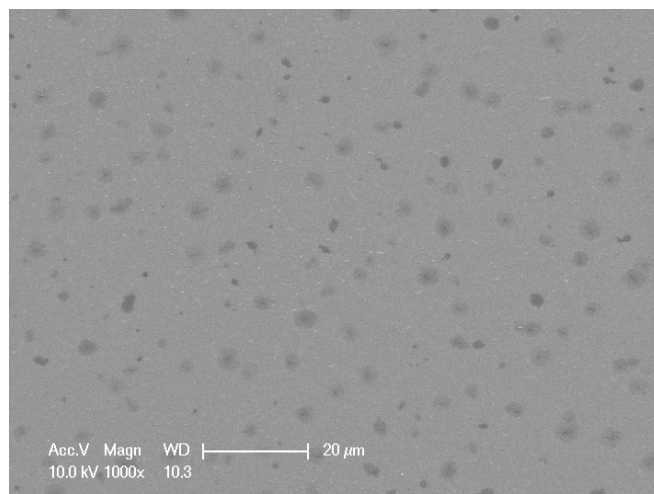
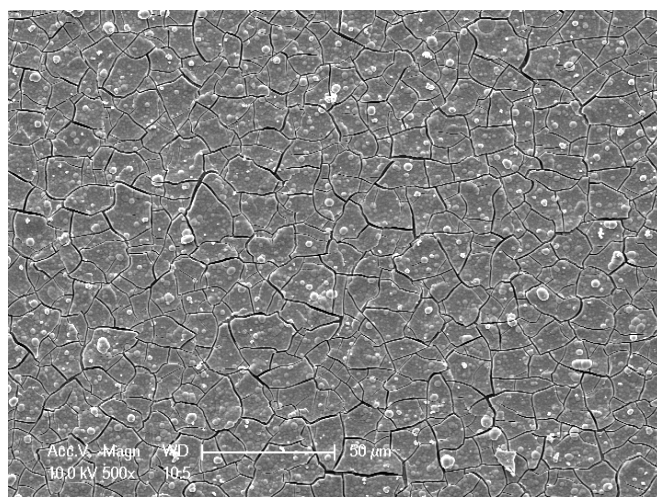
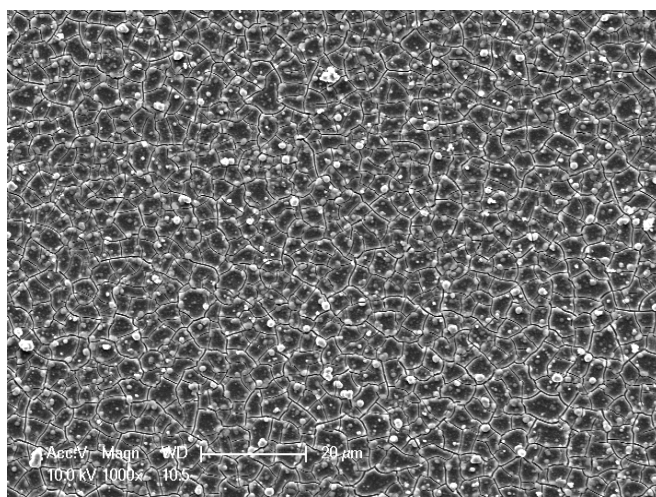
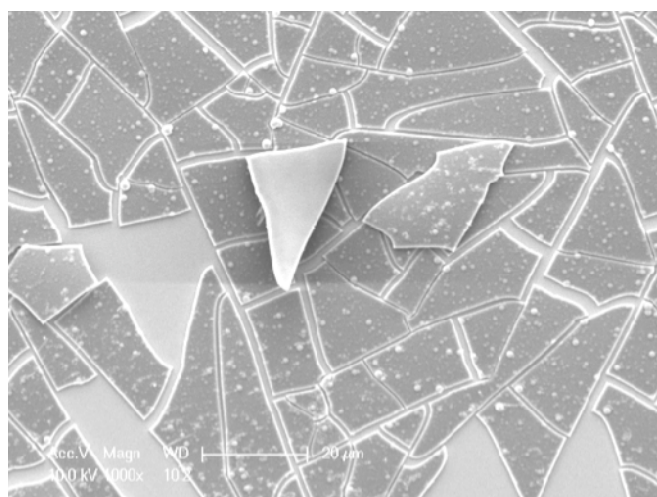
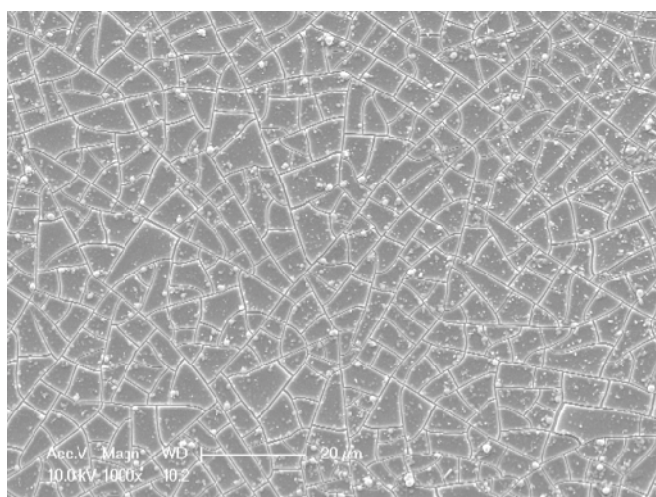


Figure S1 – SEM image of the cobalt thin-film on silicon electrode prior to transformation to Co-Pi



Figures S2 + S3 – SEM images of Si/Co/Co-Pi electrodes



Figures S4 + S5 – SEM images of Si/ITO/Co-Pi electrodes