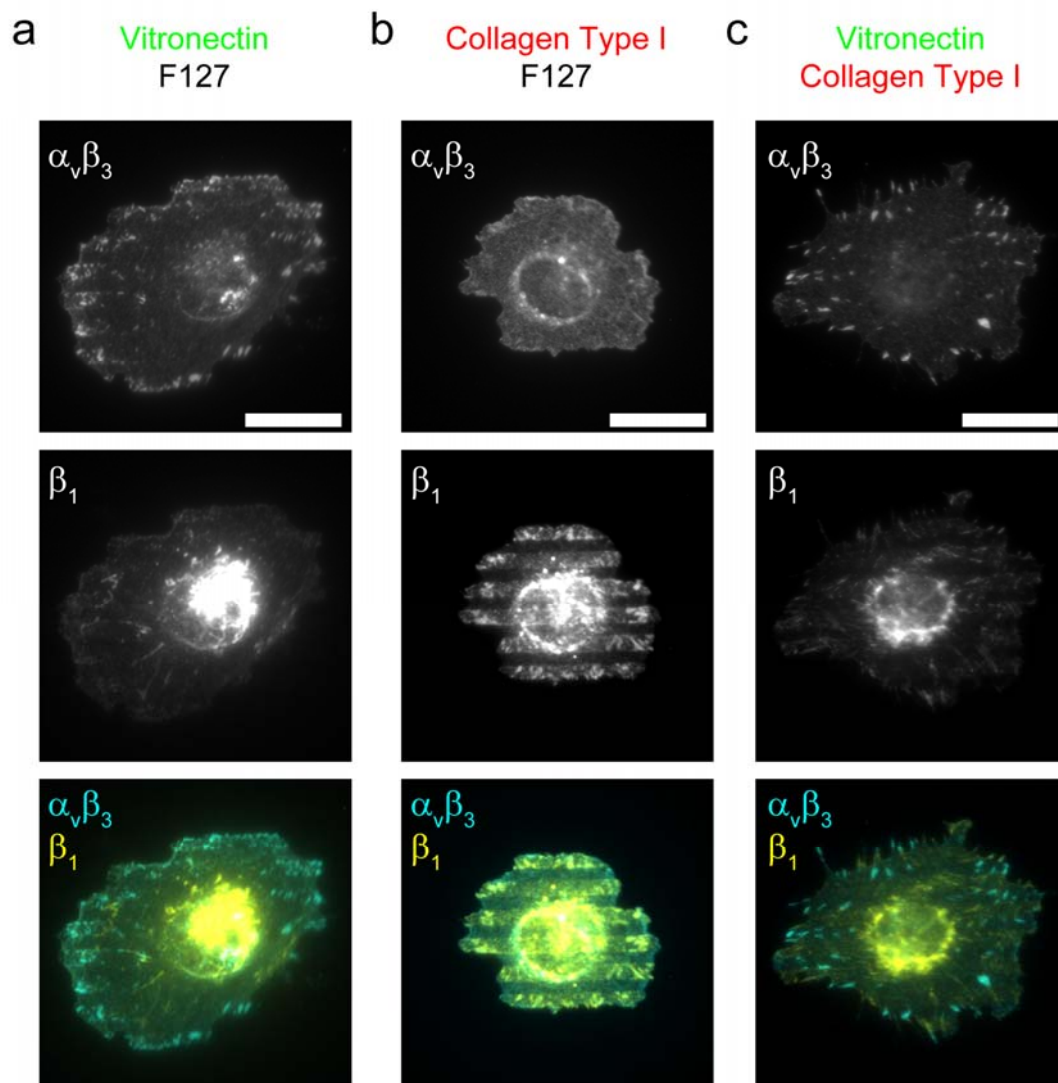


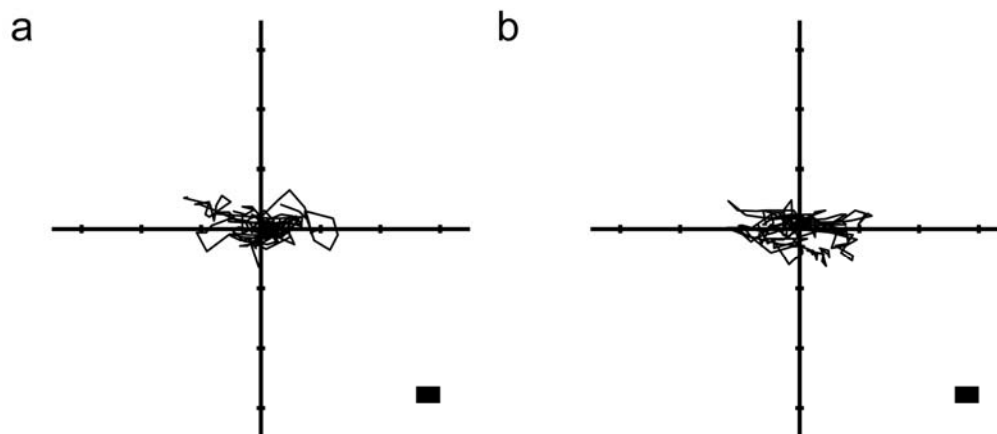
Supplemental Figure 1



Supplementary Fig. 1. Integrin segregation on multicolor surface patterns.

(a-c) Micrographs of human umbilical vein endothelial cells (HUVECs), seeded on substrates patterned as in Figure 3 (a-c), fixed after 1 h, and immunolabeled. Note the colocalization of $\alpha_v\beta_3$ integrin to vitronectin, and β_1 integrin to collagen type I. All scale bars, 20 μm .

Supplemental Figure 2



Supplementary Fig. 2. Adhesive geometry guides cell migration.

(a, b) Representative migration trajectories of cells on substrates patterned with stripes of vitronectin (a) and type-I collagen (b), as in Fig. 3a and 3b respectively. Each black line represents a single cell, originating from (0,0) with a 10 min time interval, and a 4-6 h tracking period. 6 cells are plotted per graph.