

Supporting Information to the paper by D. F. Perepichka, F. Wudl, S. R. Wilson, Y. Sun and D. I. Schuster, “*The Dissolution of Carbon Nanotubes in Aniline, Revisited*”

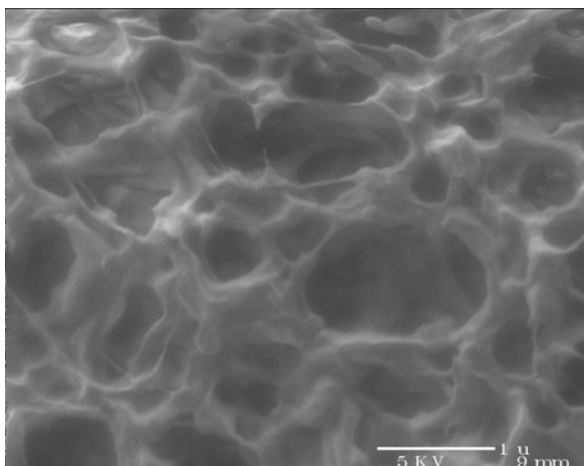


Figure S1. SEM image of PTFE membranes used for filtration of the SNWT-aniline solution.

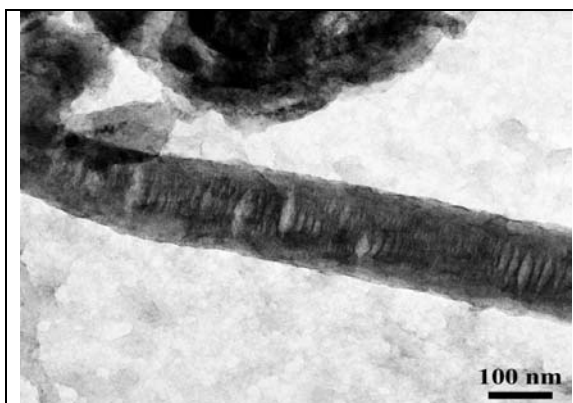


Figure S2. TEM image for an individual aniline treated MWNT.

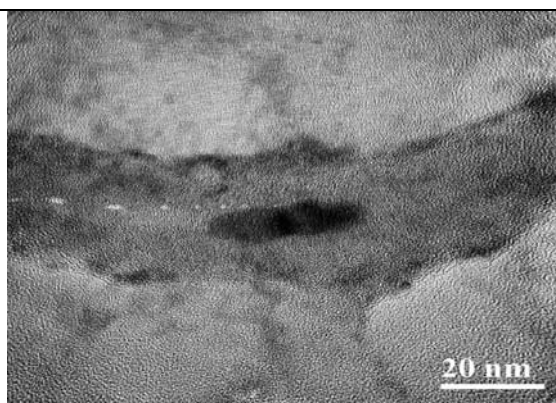


Figure S3. High magnification TEM image for an individual aniline treated MWNT showing the nanoparticle inside the tube.