

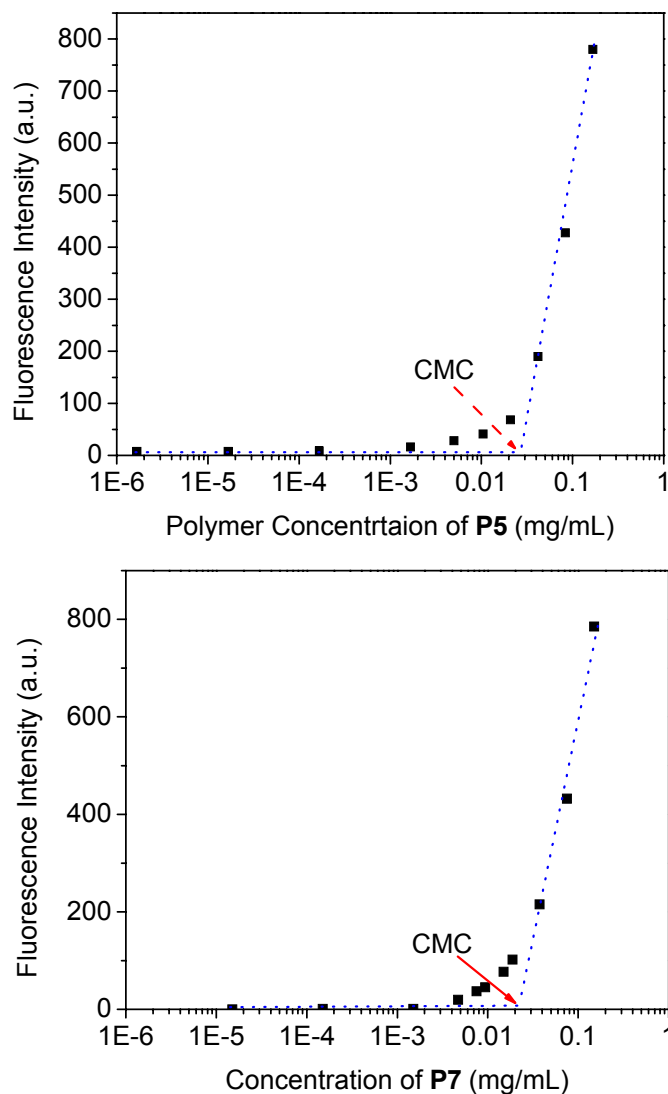
Supplementary data:

2,1,3-Benzothiadiazole (BTD)-moiety-containing red emitter conjugated amphiphilic poly(ethylene glycol)-*block*-poly(ϵ -caprolactone) copolymers for bioimaging

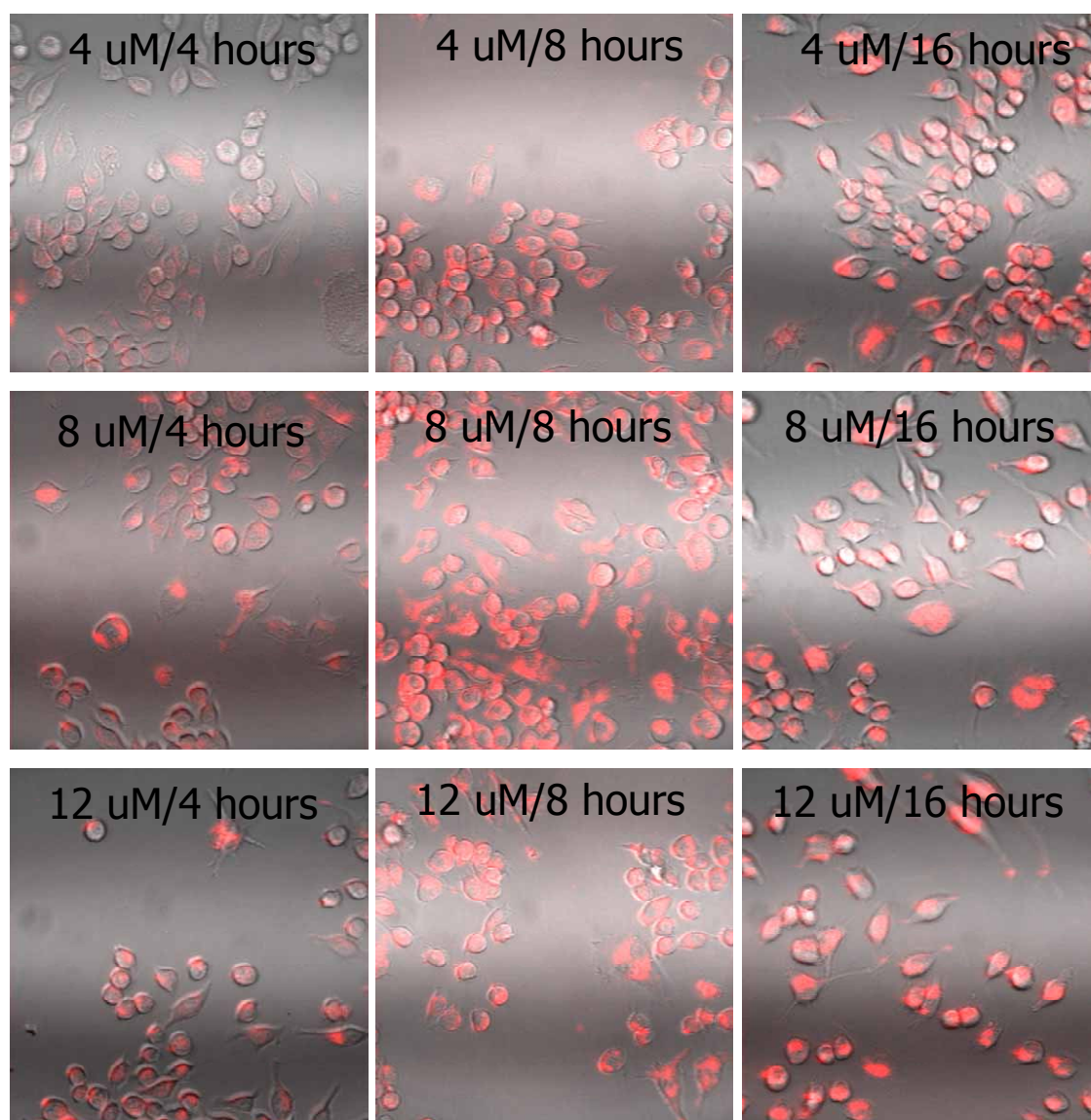
Yanqing Tian, Wen-Chung Wu, Ching-Yi Chen, Tim Strovas, Yongzhong Li, Yuguang Jin,
Fengyu Su, Deirdre R. Meldrum, and Alex K.-Y. Jen

Page 2: S-Figure 1. CMC determination of **P5** and **P7**. Fluorescence intensity at 625 nm was used in the plots, which was excited at 488 nm.

Page 3: S-Figure 2. Bioimaging of micelle 1 for RAW 264.7 cells under confocal microscopy using 63x object lens. The fluorophore concentrations were 4, 8, and 12 μM . Cellular internalization times were 4, 8, and 16 hours.



S-Figure 1. CMC determination of **P5** and **P7**. Fluorescence intensity at 625 nm was used in the plots, which was excited at 488 nm.



S-Figure 2. The bioimaging of micelle 1 for RAW 264.7 cells under confocal microscopy using 63x object lens. The fluorophore concentrations were 4, 8, and 12 μM . Cellular internalization times were 4, 8, and 16 hours.