

## Supporting information

### Toward High Surface Area TiO<sub>2</sub> Brookite with Morphology Control

D. Dambournet, I. Belharouak, J. Ma, and K. Amine

*Chemical Sciences and Engineering Division, Argonne National Laboratory,  
9700 South Cass Avenue, Argonne, Illinois 60439 USA*

Fig SI-1. Scanning electron micrographs of the sample obtained at the early stage of precipitation. a. typical large agglomerate observed in a very small fraction. Energy-dispersive X-ray spectroscopy performed on those large agglomerates indicates a titanium dioxide composition. b. For comparison, EDS analysis of rounded-type particles corresponding to the titanium oxalate hydrate phase.

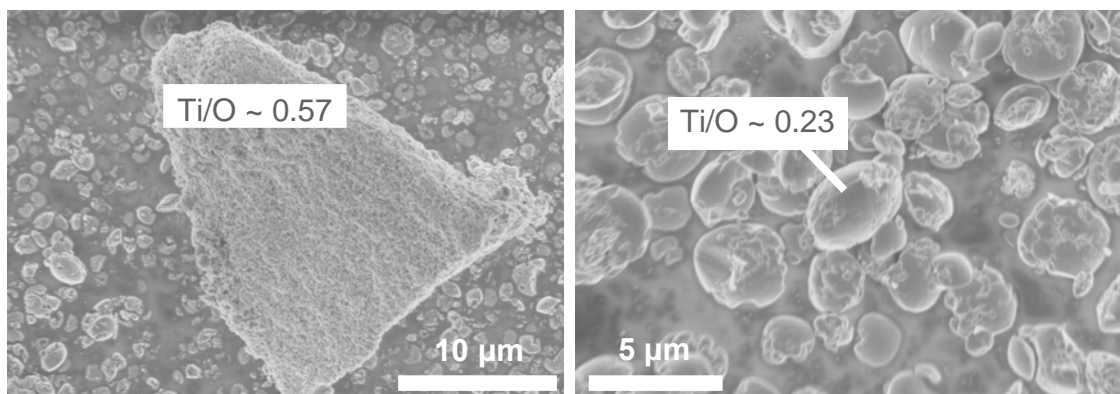


Fig SI-2. X-ray diffraction powder patterns of the samples prepared during 3 and 4 hours of reaction using sodium oxalate.

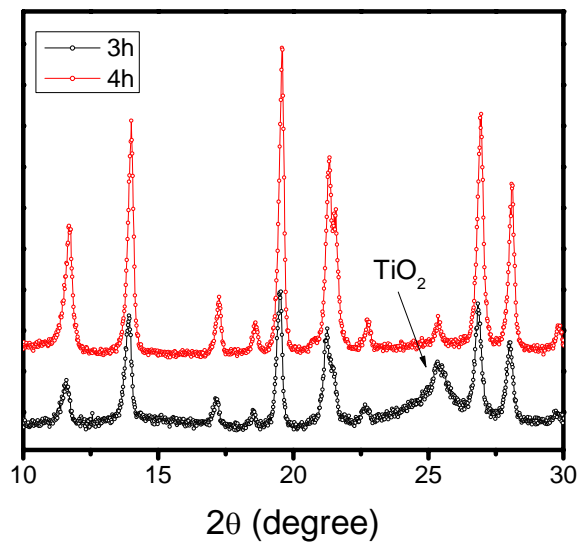


Fig SI-3. Scanning electron micrographs of the titanium oxalate hydrate prepared using sodium oxalate.

