

*Electronic Supplementary Information (ESI)*

**Construction of efficient solid emitters with conventional and AIE  
luminogens for blue organic light-emitting diodes**

Zujin Zhao,\*<sup>a</sup> Shuming Chen,<sup>b</sup> Chenmei Deng,<sup>b</sup> Jacky W. Y. Lam,<sup>b</sup> Carrie Y. K. Chan,<sup>b</sup> Ping Lu,<sup>c</sup>  
Zhiming Wang,<sup>c</sup> Bingbing Hu,<sup>d</sup> Xiaopeng Chen,<sup>d</sup> Ping Lu,<sup>d</sup> Hoi Sing Kwok,<sup>b</sup> Yuguang Ma,<sup>c</sup> Huayu Qiu<sup>a</sup>  
and Ben Zhong Tang\*<sup>b</sup>

<sup>a</sup> College of Material, Chemistry and Chemical Engineering, Hangzhou Normal University, Hangzhou  
310036

<sup>b</sup> Department of Chemistry and Center for Display Research, The Hong Kong University of Science &  
Technology, Clear Water Bay, Kowloon, Hong Kong, China

<sup>c</sup> State Key Laboratory of Supramolecular Structure and Materials, Jilin University, Changchun 130012,  
China

<sup>d</sup> Department of Chemistry, Zhejiang University, Hangzhou 310027, China

**Table of Contents**

**Fig. S1.** <sup>1</sup>H NMR spectrum of BPyBCF in CDCl<sub>3</sub>.

**Fig. S2.** <sup>13</sup>C NMR spectrum of BPyBCF in CDCl<sub>3</sub>.

**Fig. S3.** <sup>1</sup>H NMR spectrum of BAnBCF in CDCl<sub>3</sub>.

**Fig. S4.** <sup>13</sup>C NMR spectrum of BAnBCF in CDCl<sub>3</sub>.

**Fig. S5.** <sup>1</sup>H NMR spectrum of BTPABCF in CDCl<sub>3</sub>.

**Fig. S6.** <sup>13</sup>C NMR spectrum of BTPABCF in CDCl<sub>3</sub>.

**Fig. S7.** <sup>1</sup>H NMR spectrum of BTPEBCF in CD<sub>2</sub>Cl<sub>2</sub>.

**Fig. S8.** <sup>13</sup>C NMR spectrum of BTPEBCF in CD<sub>2</sub>Cl<sub>2</sub>.

**Fig. S9.** Absorption and PL spectra of compound **3** in dilute THF solution.

**Fig. S10.** Optimized molecular structure and molecular orbital amplitude plots of HOMO and LUMO levels of compound **3**, calculated using the B3LYP/6-31G(d) basis set.

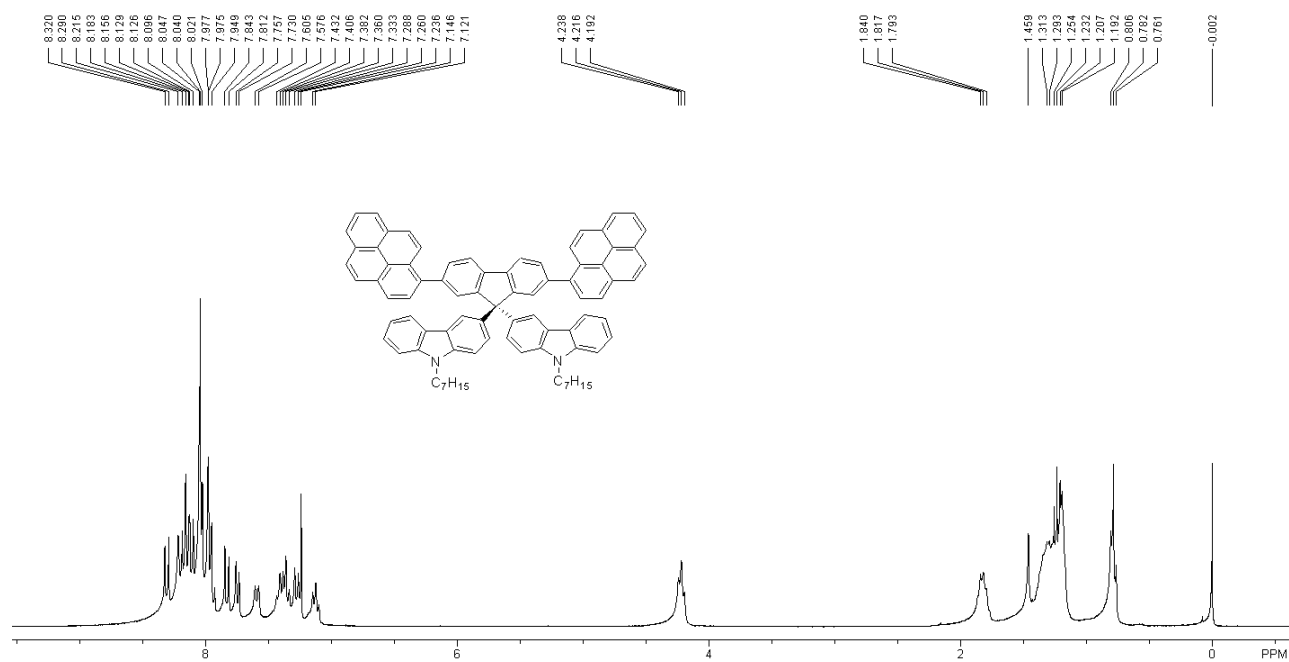


Fig. S1.  $^1\text{H}$  NMR spectrum of BPyBCF in  $\text{CDCl}_3$ .

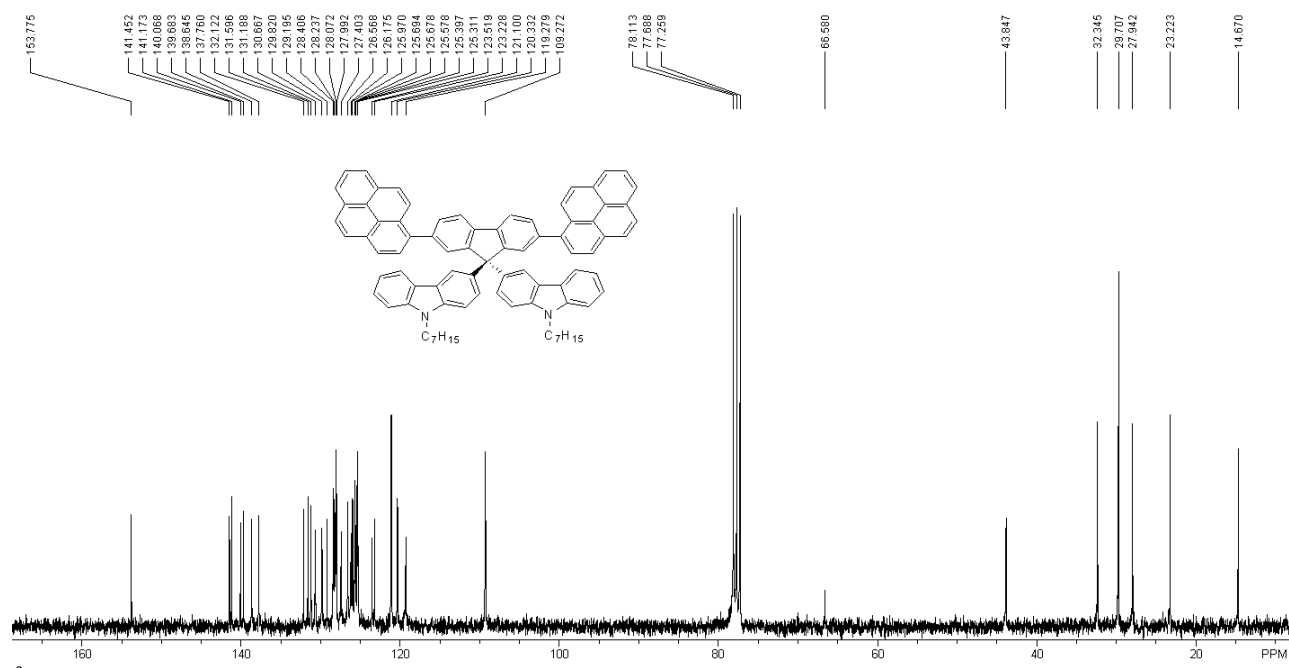


Fig. S2.  $^{13}\text{C}$  NMR spectrum of BPyBCF in  $\text{CDCl}_3$ .



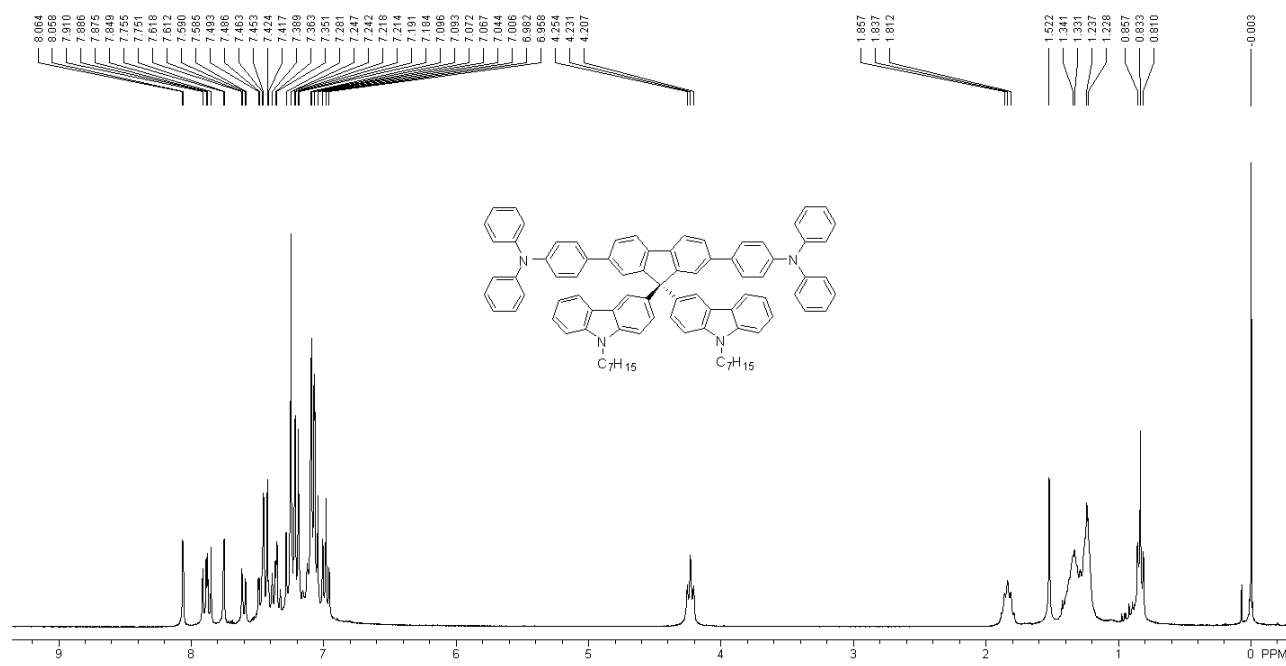


Fig. S5. <sup>1</sup>H NMR spectrum of BTPABCF in CDCl<sub>3</sub>.

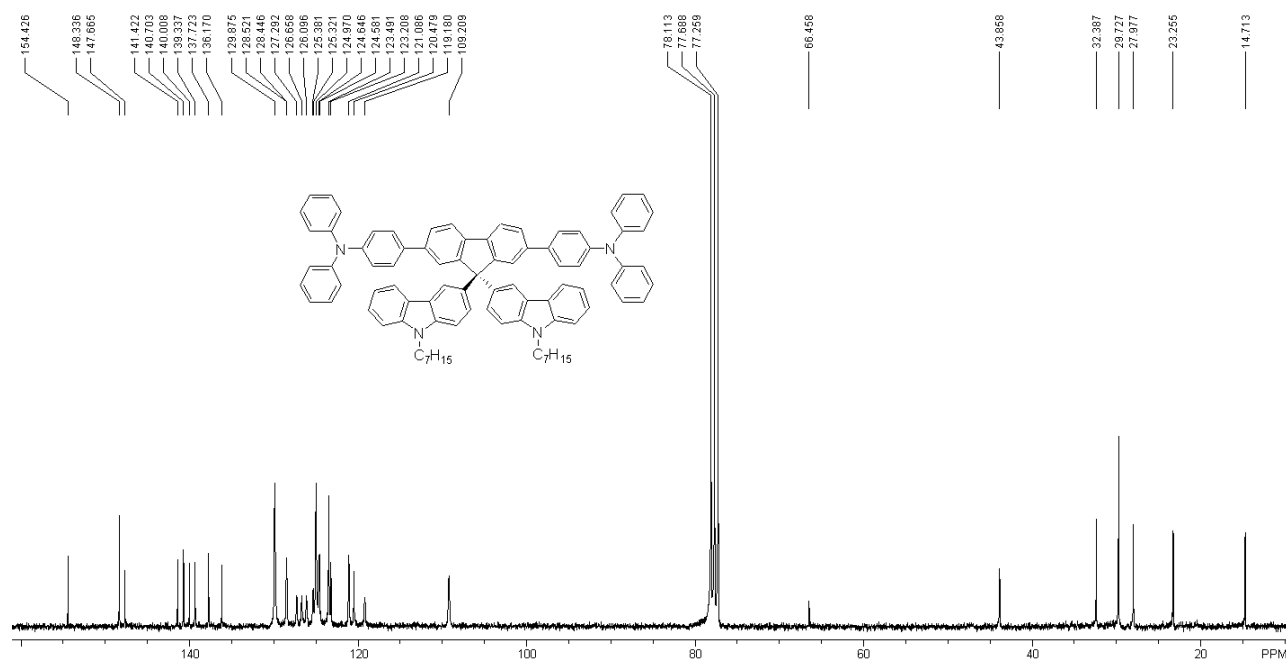


Fig. S6. <sup>13</sup>C NMR spectrum of BTPABCF in CDCl<sub>3</sub>.

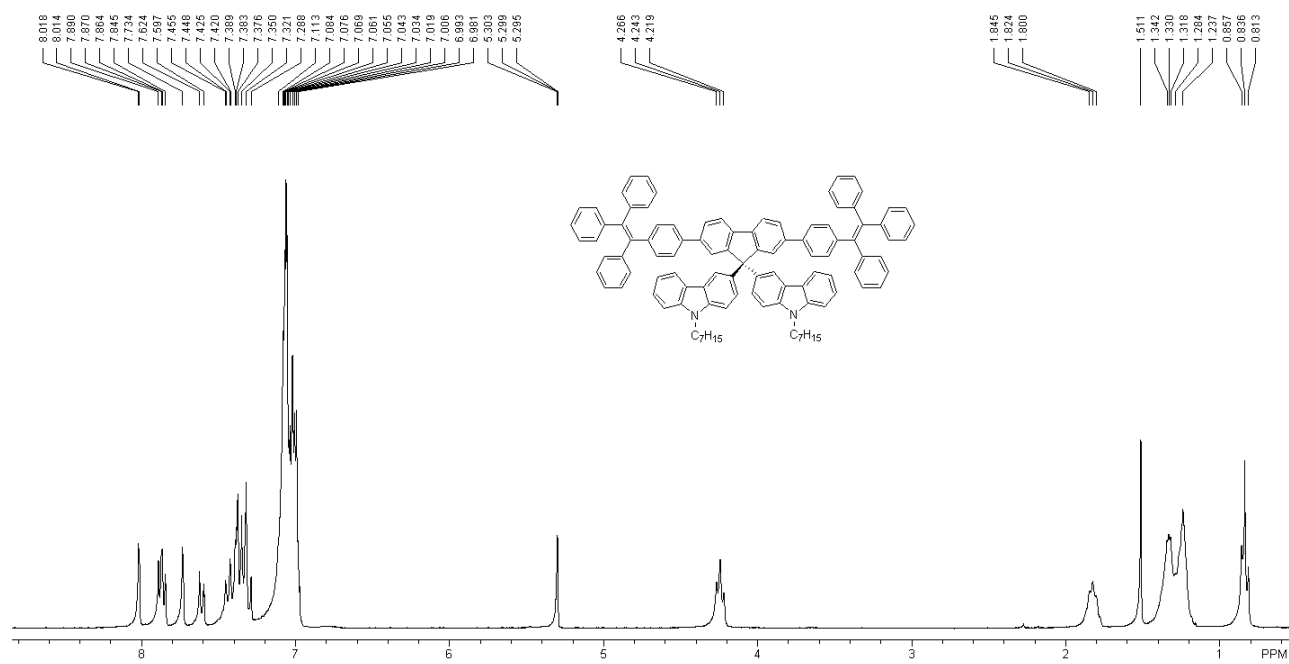


Fig. S7.  $^1\text{H}$  NMR spectrum of BTPEBCF in  $\text{CD}_2\text{Cl}_2$ .

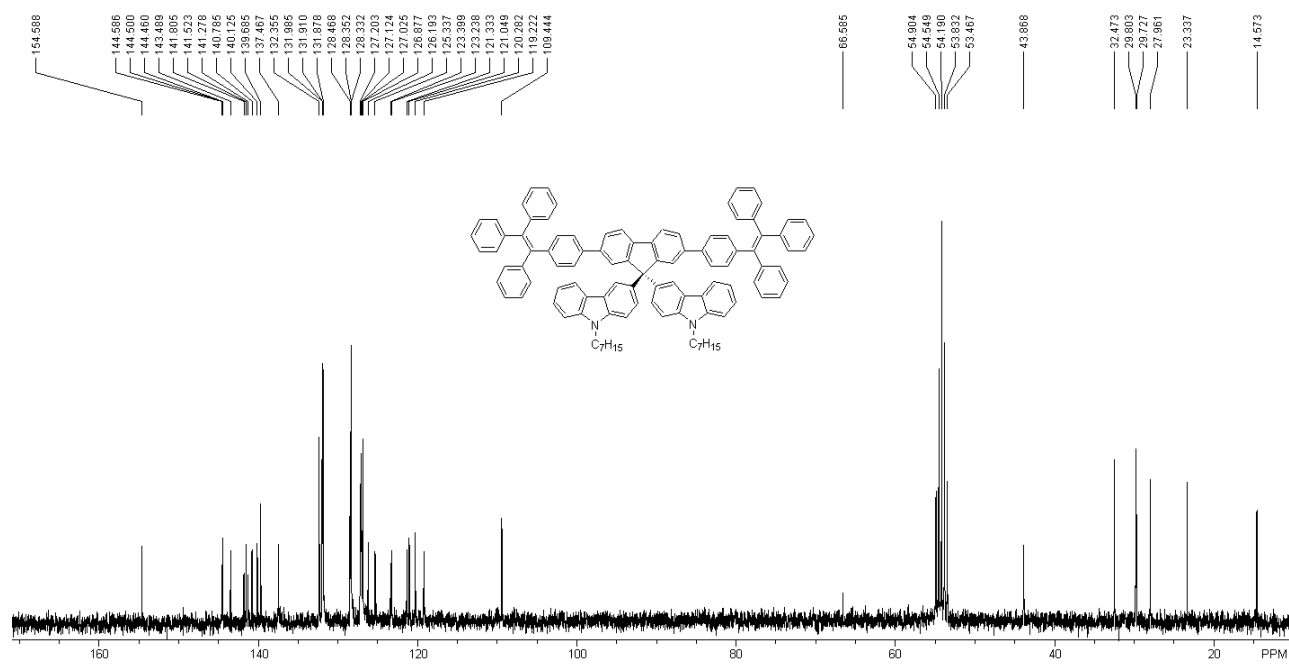
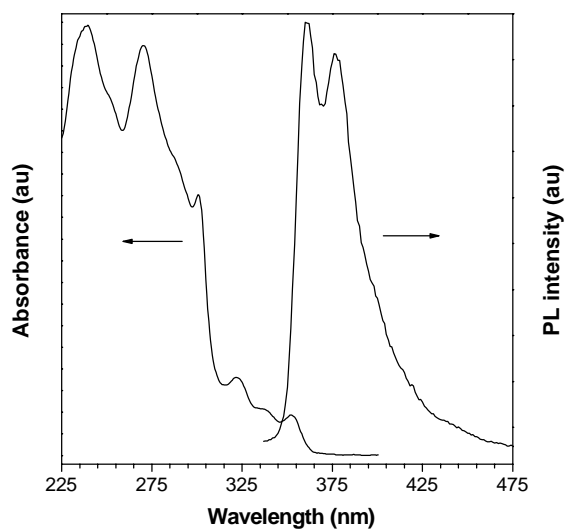
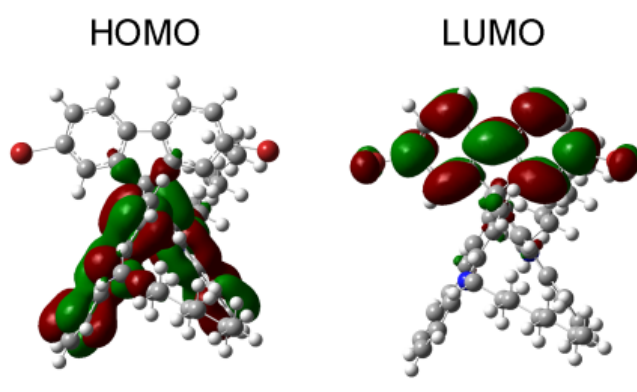


Fig. S8.  $^{13}\text{C}$  NMR spectrum of BTPEBCF in  $\text{CD}_2\text{Cl}_2$ .



**Fig. S9.** Absorption and PL spectra of compound **3** in dilute THF solution.



**Fig. S10.** Optimized molecular structure and molecular orbital amplitude plots of HOMO and LUMO levels of compound **3**, calculated using the B3LYP/6-31G(d) basis set.