

Unique Pd/Graphene Nanocomposites Constructed Using Supercritical Fluid for Superior Electrochemical Sensing Performance

Cheng-Hung Wu¹, Chueh-Han Wang¹, Ming-Tsung Lee¹, Jeng-Kuei Chang^{1,2,3*}

¹ Institute of Materials Science and Engineering,

² Department of Chemical and Materials Engineering,

³ Department of Mechanical Engineering,

National Central University, Taoyuan, Taiwan

E-mail: jkchang@ncu.edu.tw; Fax: +886-3-2805034

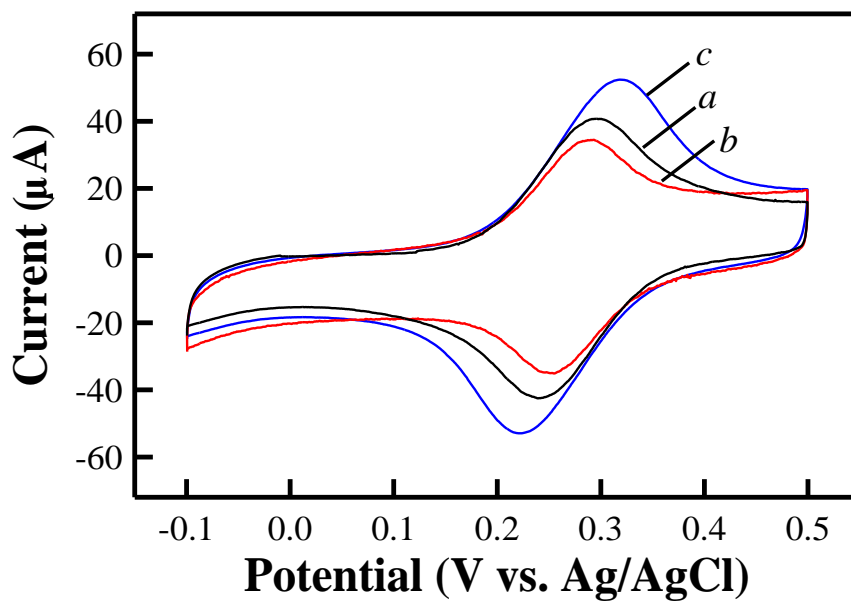


Fig. S11. Cyclic voltammograms of the graphene (curve *a*), Pd/graphene@air (curve *b*), and Pd/graphene@scCO₂ (curve *c*) electrodes recorded in solution containing 0.01 M Fe(CN)₆^{4-/3-} and 1 M KCl at a potential scan rate of 50 mV/s.