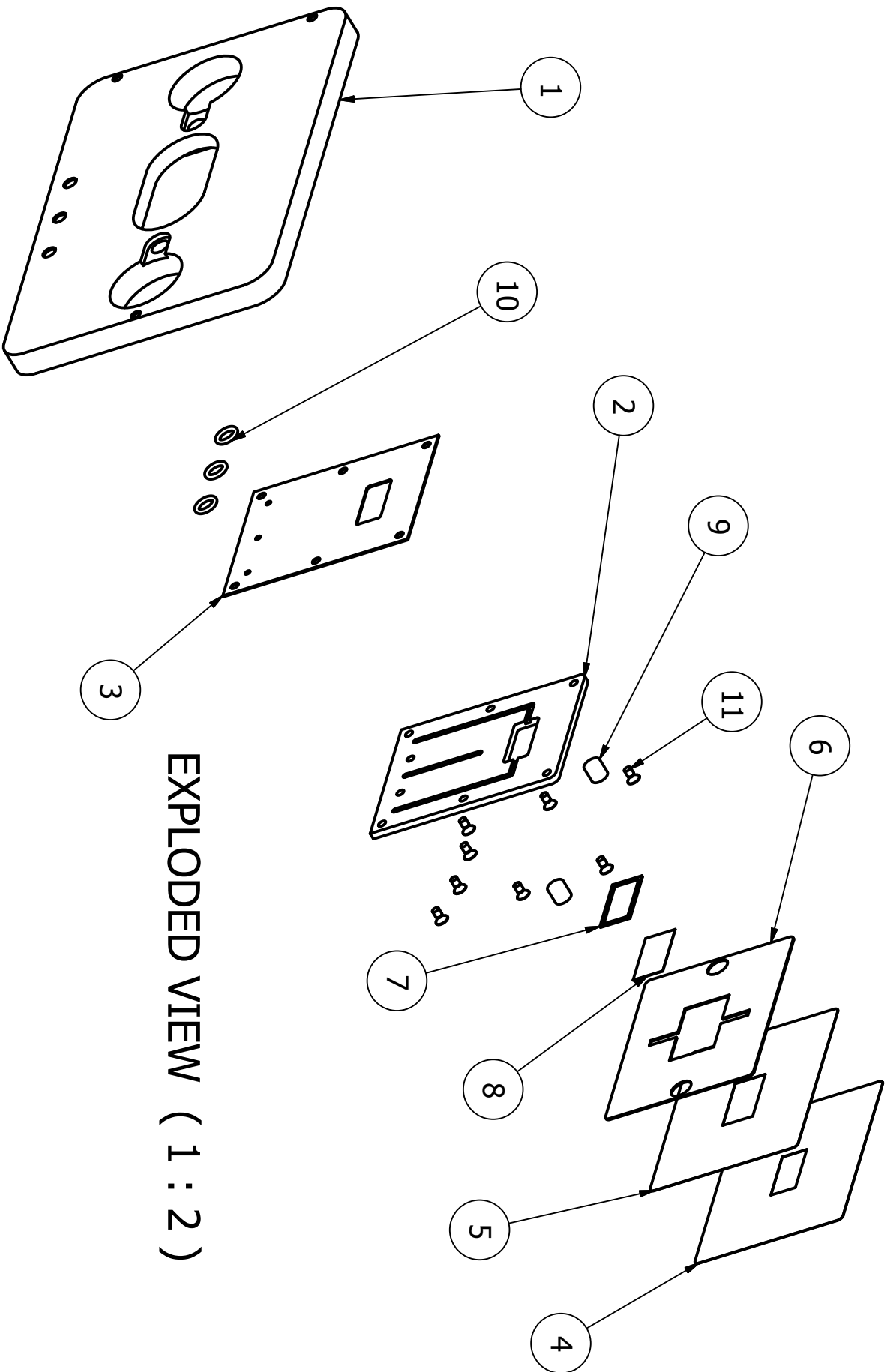


Perfusion Chamber 2

Part list

Part Number	Quantity	Part Name	Description	Material
1	1	Base	Rectangular Bar 3/8" Thick, 6" Width, 1' Length	Alloy 6061 Aluminum
2	1	Cover plate	.080" Thick, 12" X 12"	Alloy 3003 Aluminum Sheet .080" Thick, 12" X 12"
3	1	PTFE sheet	0.020" Thick, 6" Width	PTFE
4 and 4bis	1	Coverslip holder bottom (12x24mm coverslip)	100 µm thick	Stainless steel
5 and 5bis	1	Coverslip holder top (12x24mm coverslip)	100 µm thick	Stainless steel
6 and 6bis	1	Outer gasket (12x24mm and 22x22mm coverslip)	Film .020" Thick, 12" X 12", 35A Durometer	Silicone rubber
7 and 7bis	1	Inner gasket (12x24mm and 22x22mm coverslip)	Film .020" Thick, 12" X 12", 35A Durometer	Silicone rubber
8	8	Coverslip	12x24mm or 22x22mm, Thickness 1, Gold seal, Vitromed or VWR	Glass
9	2	Magnet	Pressure-Formed Neodymium Disc Magnet 1/4" Dia, 1/4" Thick, 3.5 Pull lbs, Nickel Plated	
10	3	O-ring	AS568A Dash Number 009	Silicone
11	8	Flat screw	Metric 18-8 SS Flat Head Phil Machine Screw M2.5 Size, 6mm Length, .45mm Pitch	Stainless steel
12	3	Quick connector male	Plastic Quick-Turn (Luer Lock) Coupling, Female X Male Thread, 10-32 Unf Thread	Nylon
13	2	Magnet top	Ultra-High-Pull Neodymium Disc Magnet 3/8" Dia, 1/8" Thick, 3.6 Pull lbs, Nickel Plated	



EXPLODED VIEW (1 : 2)

Designed by Arthur Queval	Checked by	Approved by	Date 07/04/2008	Date 07/04/2008	
------------------------------	------------	-------------	--------------------	--------------------	--

McGill University

Perfusion chamber 2

Edition

Sheet
1 / 1

2

1

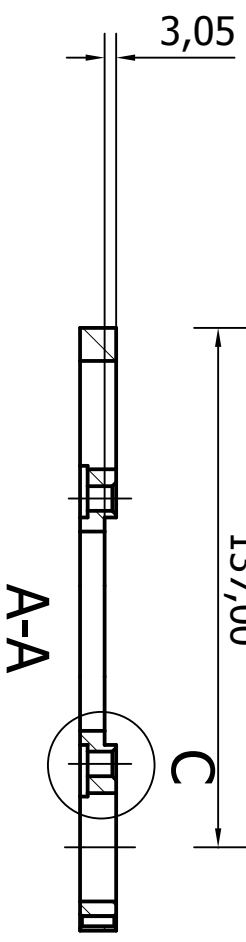
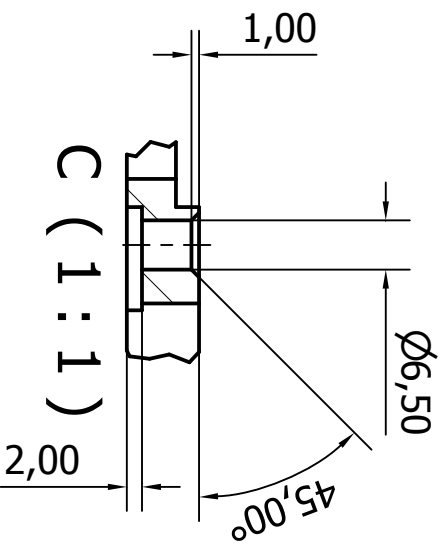
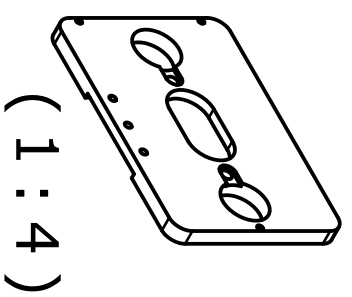
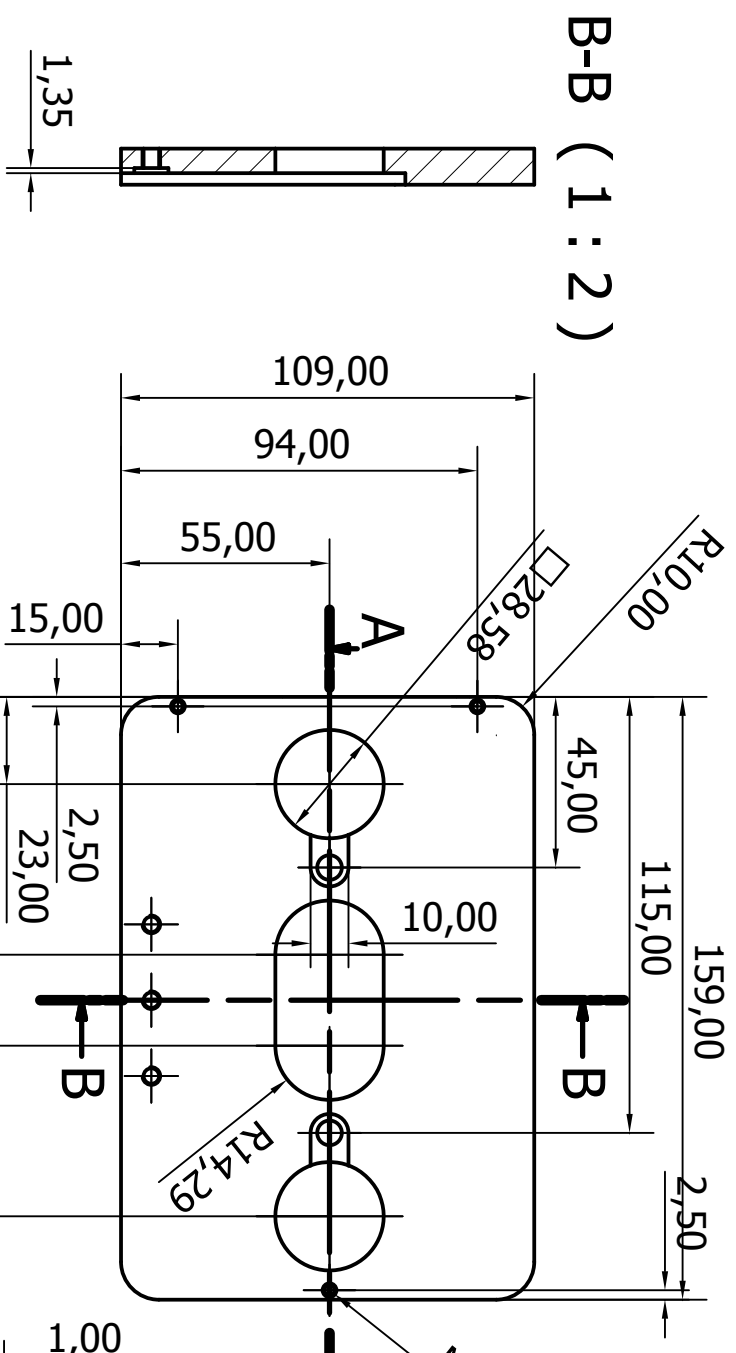
A

B

A

B

FRONT VIEW (1 : 2)



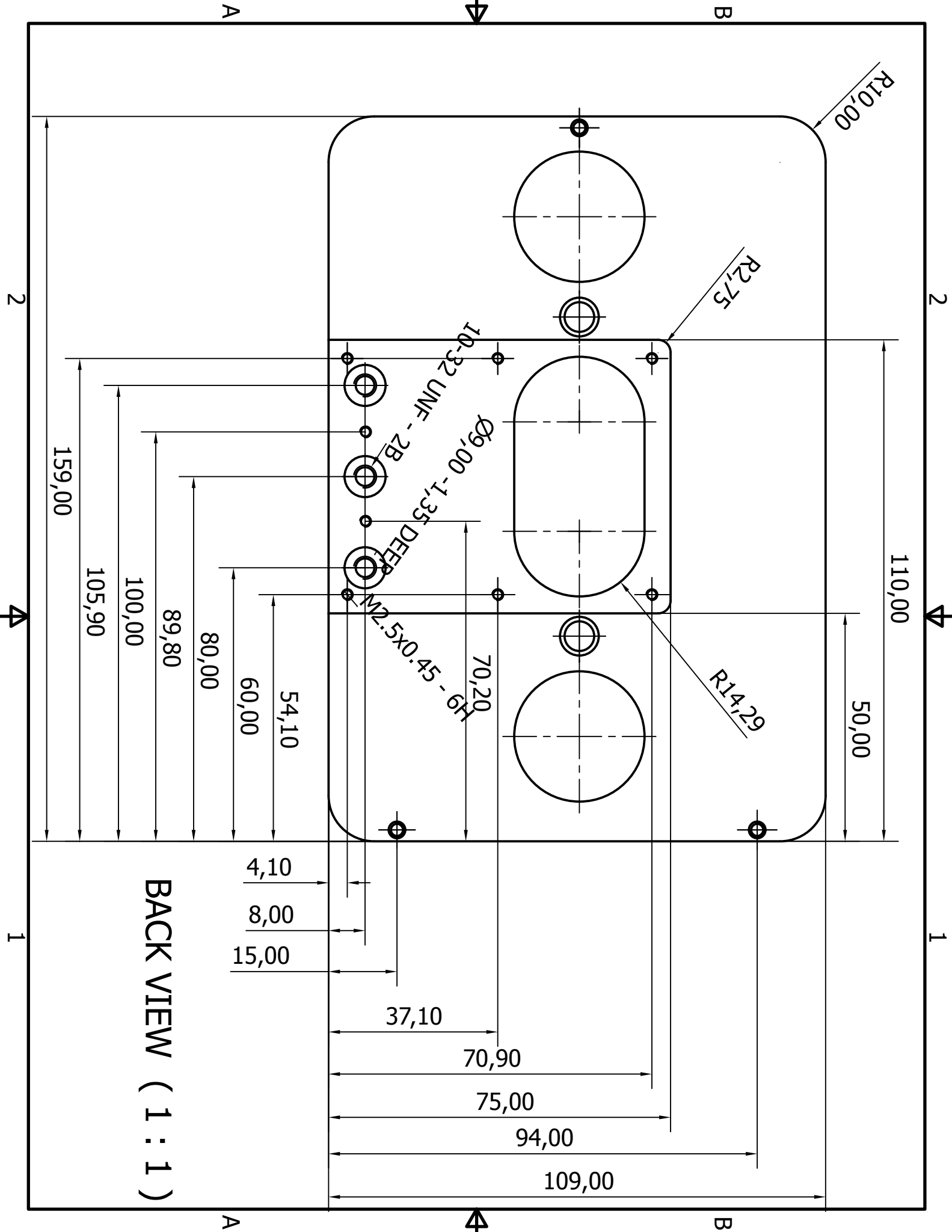
ISO 2768-f

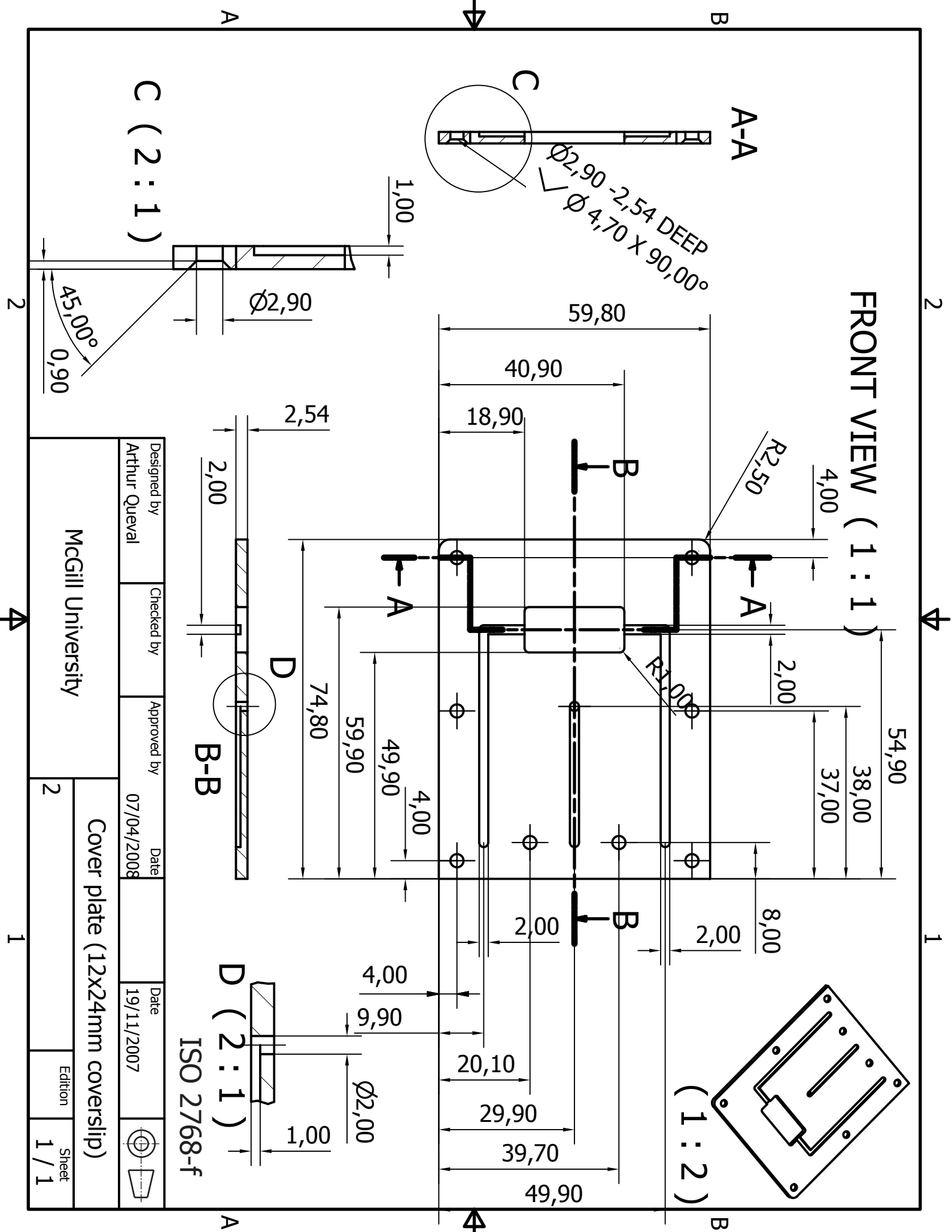
Designed by	Checked by	Approved by	Date	Date	
Arthur Queval			07/04/2008	20/11/2007	

Mc Gill University

Base

1	1	1 / 2
Edition	Sheet	



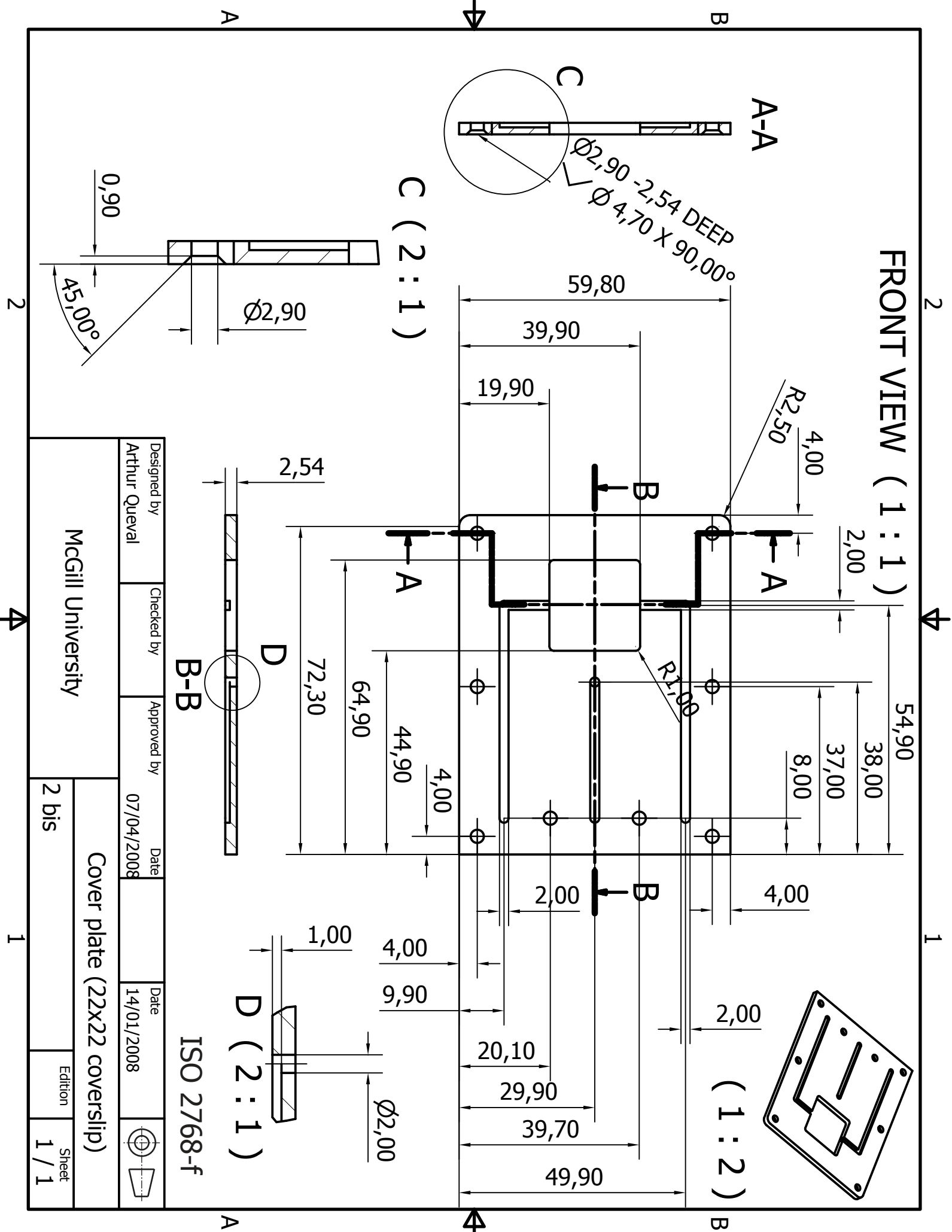


Designed by Arthur Queval	Checked by	Approved by	Date 07/04/2008	Date 19/11/2007
------------------------------	------------	-------------	--------------------	--------------------

McGill University

Cover plate (12x24mm coverslip)

2	1 / 1
---	-------



Designed by Arthur Queval	Checked by	Approved by	Date 07/04/2008	Date 14/01/2008
McGill University				
Cover plate (22X22 coverslip)			Edition 1 / 1	
2 bis			Sheet 1 / 1	

2



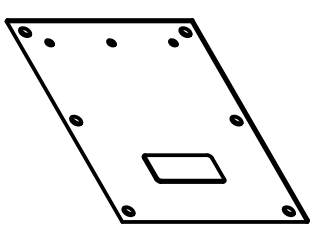
1

0,51

4,00

37,00

4,00



(1 : 2)

B

B

49,90

29,90

9,90

4,00

8,00

R1,00

18,90

40,90

59,80

RIGHT VIEW



A

A

FRONT VIEW (1 : 1)

49,90

59,90

74,80

ISO 2768-f

Designed by	Checked by	Approved by	Date	Date	
Arthur Queval			08/04/2008	08/04/2008	

McGill University

PTFE sheet (12X24mm coverslip)

3

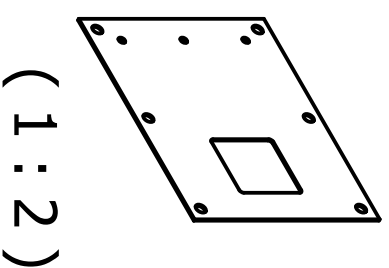
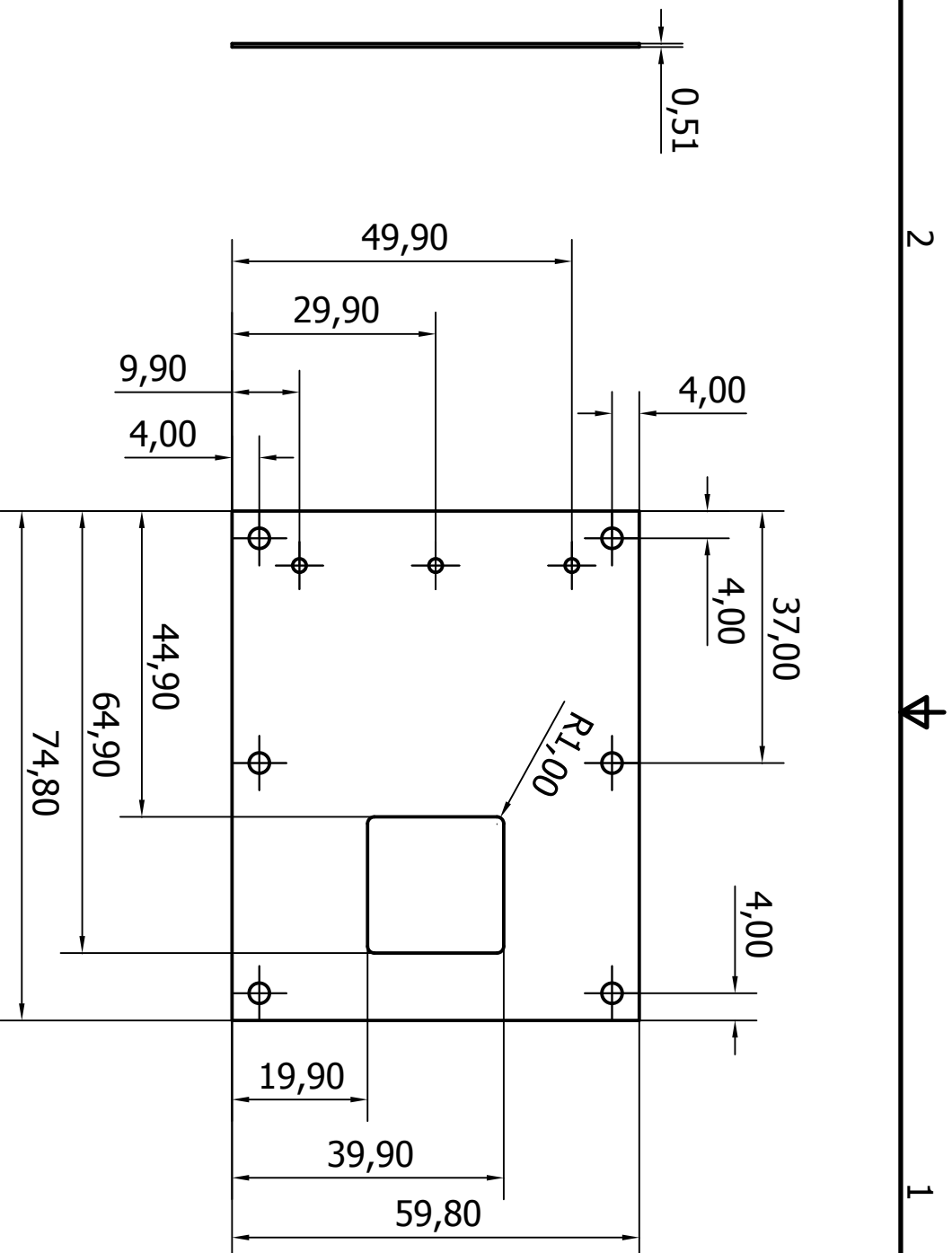
Edition

Sheet
1 / 1

2

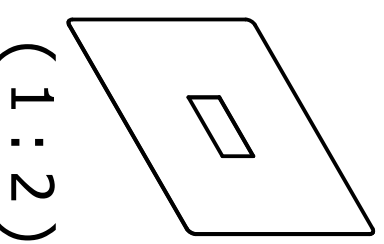
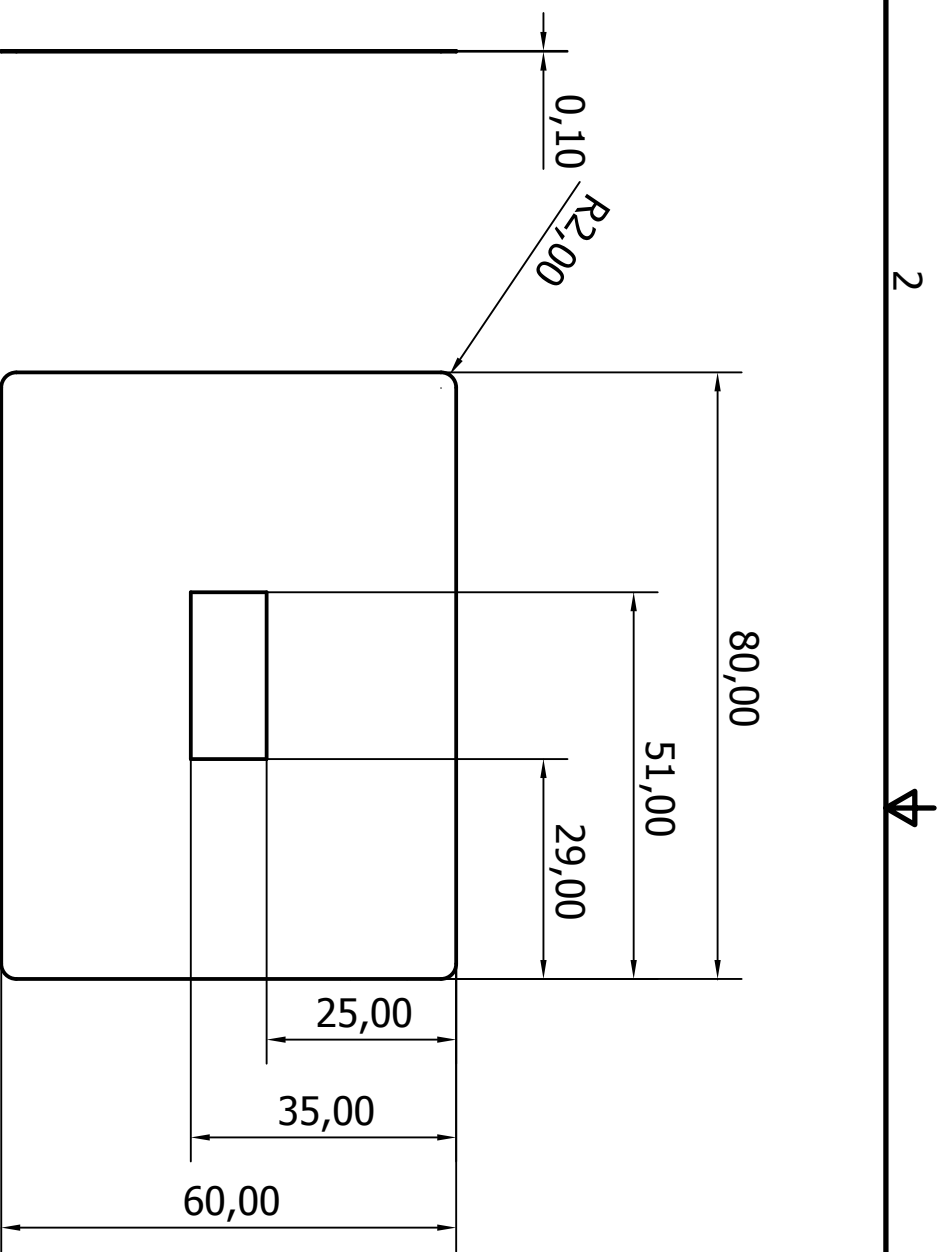


1



ISO 2768-f

Designed by Arthur Queval	Checked by	Approved by	Date 08/04/2008	Date 08/04/2008		
McGill University			PTFE sheet (22x22mm coverslip)			
			3 bis	Edition	Sheet	
			1 / 1			

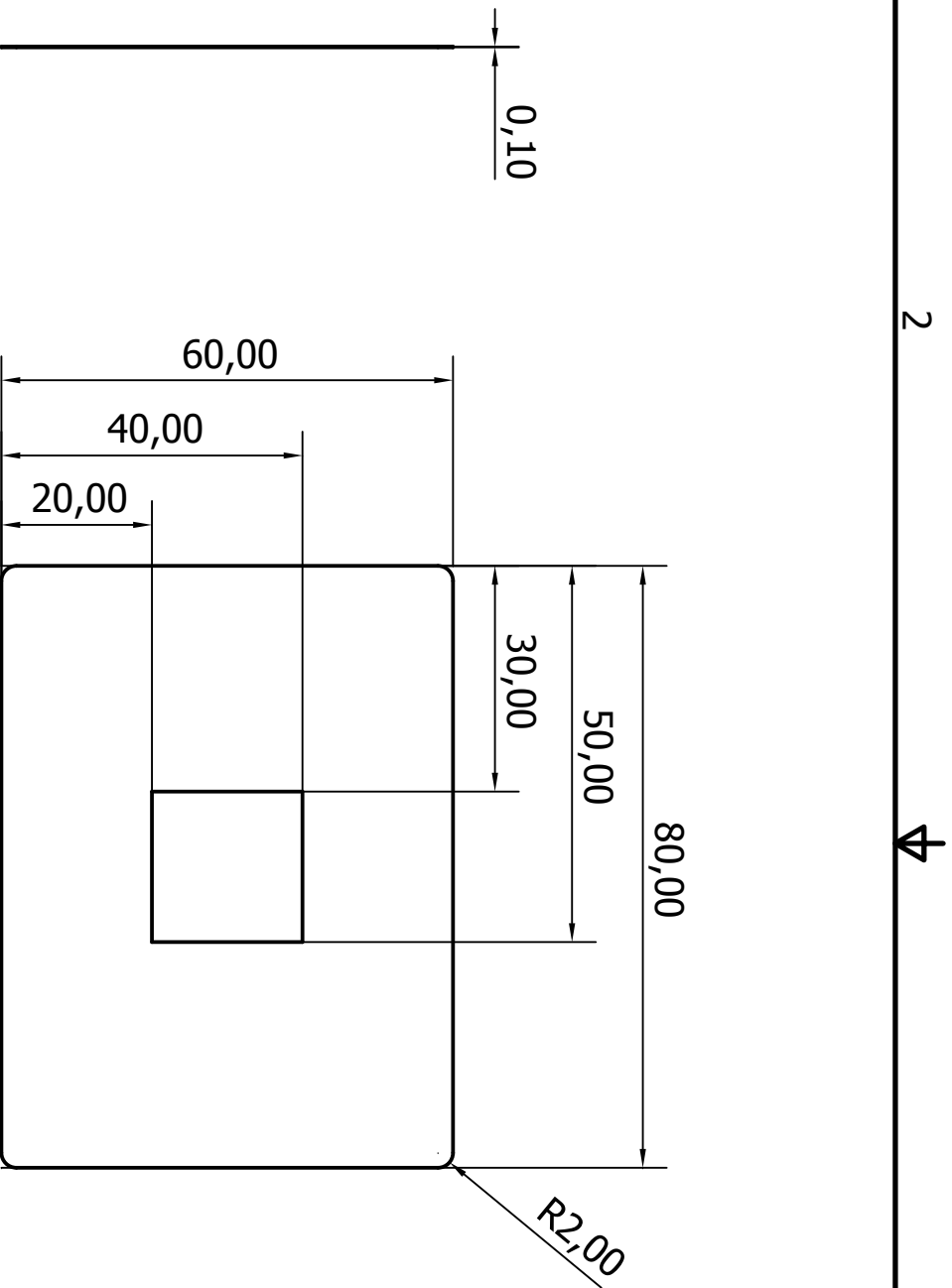


(1 : 2)

RIGHT VIEW FRONT VIEW (1 : 1)

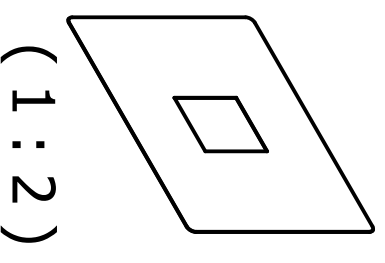
ISO 2768-f

Designed by Arthur Queval	Checked by	Approved by	Date 07/04/2008	Date 19/11/2007	
Mc Gill University			Coverslip holder bottom (12x24mm coverslip)		
			4	Edition	Sheet
			1 / 1	1	



RIGHT VIEW

FRONT VIEW (1 : 1)



(1 : 2)

ISO 2768-f

Designed by Arthur Queval	Checked by	Approved by	Date 07/04/2008	Date 09/01/2008	
McGill University			Coverslip holder bottom (22x22mm coverlip)		
4 bis			Edition		Sheet 1 / 1

A

B

A

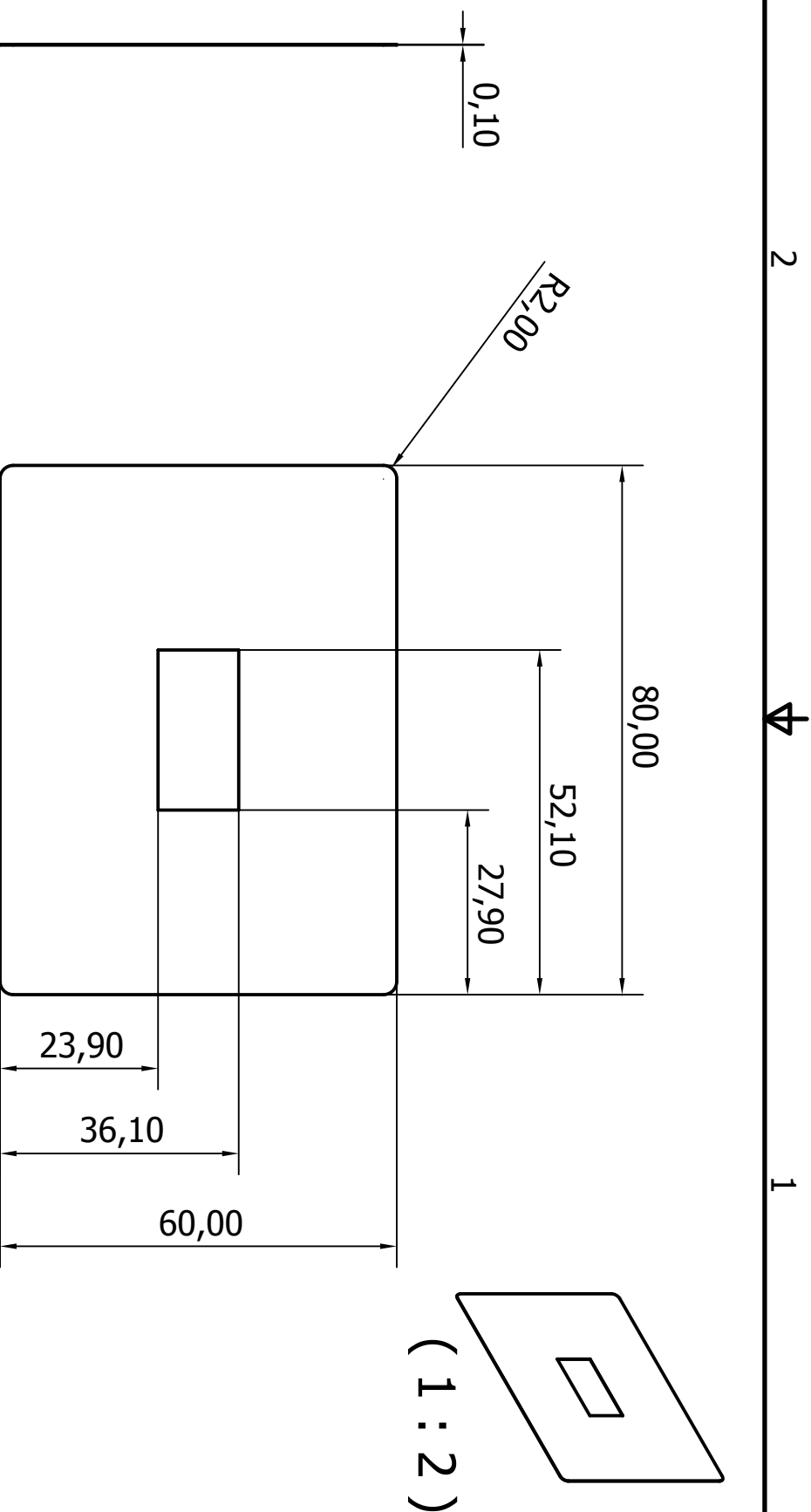
B

2

2

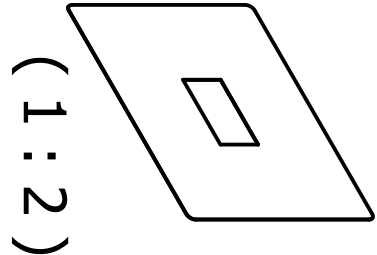
1

1



RIGHT VIEW

FRONT VIEW (1 : 1)



ISO 2768-f

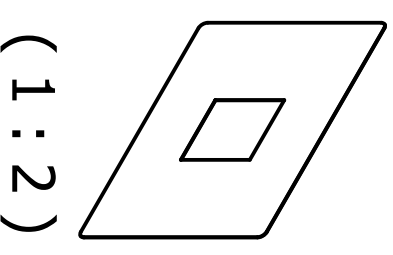
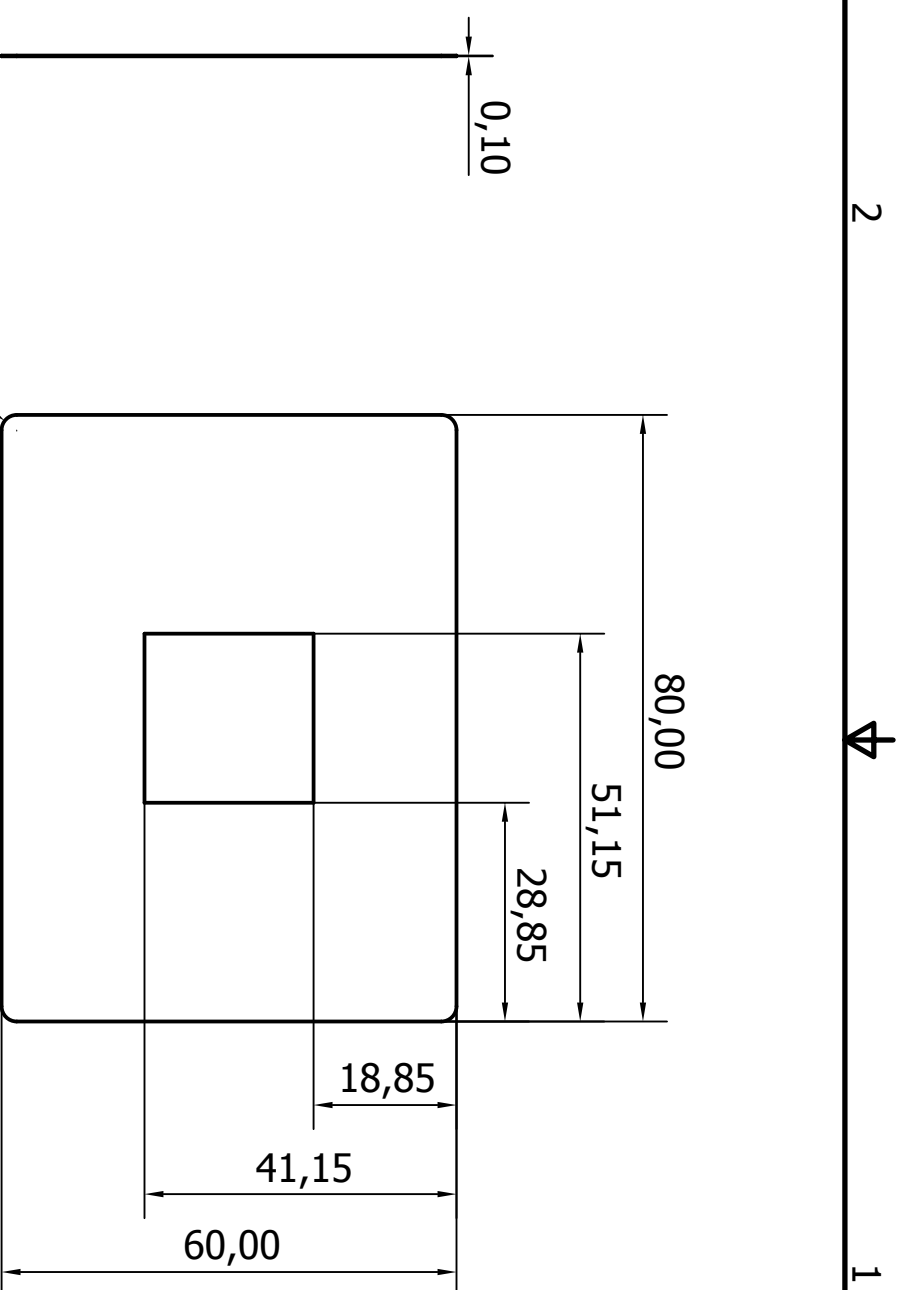
Designed by Arthur Queval	Checked by	Approved by	Date 08/04/2008	Date 19/11/2007		
------------------------------	------------	-------------	--------------------	--------------------	--	--

Mc Gill University

Coverslip holder top (12x24mm coverslip)

5	Edition	Sheet
		1 / 1

Technical drawing frame with dimensions 2 and 1 on the top and bottom edges, and A and B on the left and right edges. Arrows indicate the viewing directions for the front and right views.



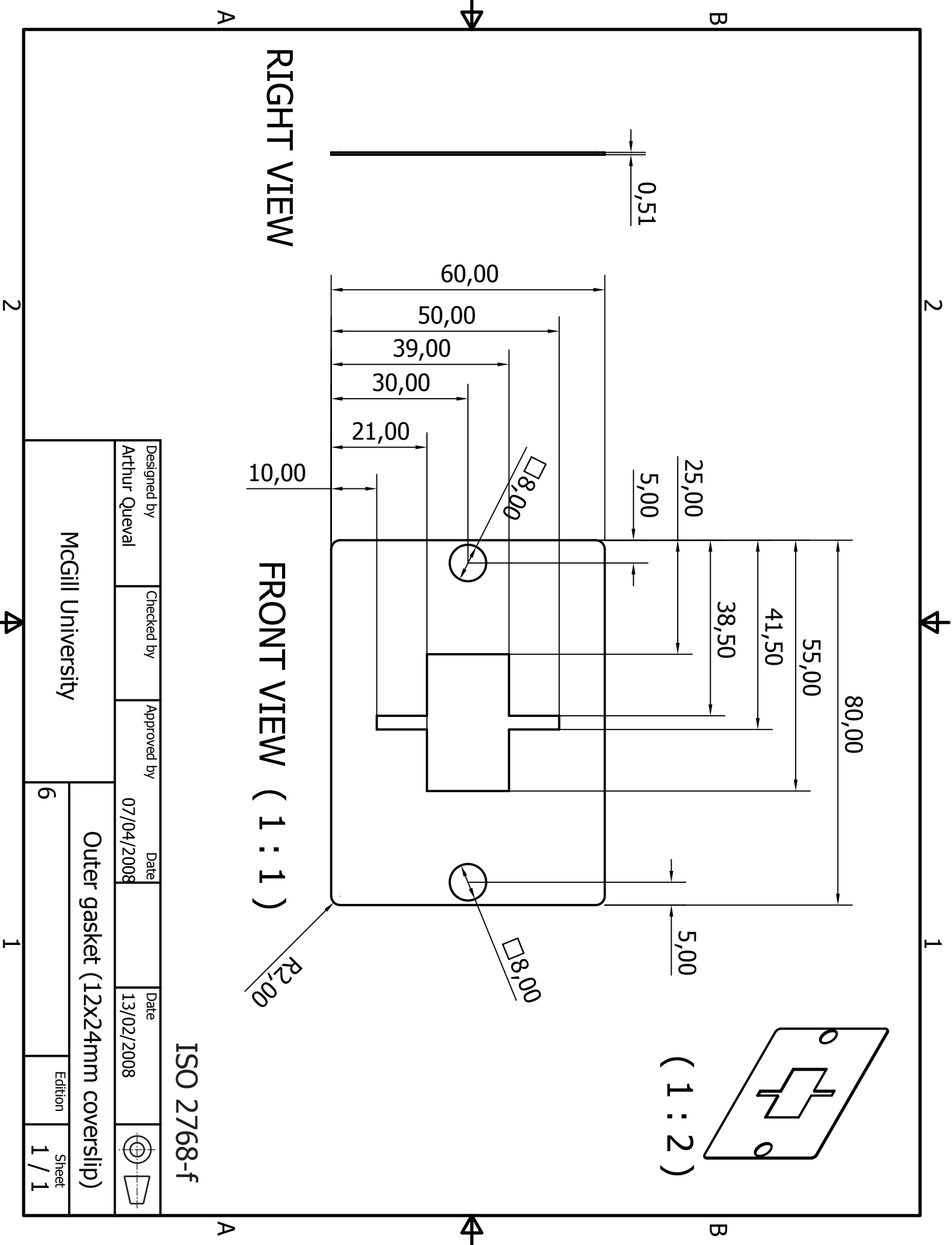
(1 : 2)

RIGHT VIEW

FRONT VIEW (1 : 1)

ISO 2768-f

Designed by Arthur Queval	Checked by	Approved by	Date 08/04/2008	Date 09/01/2008		
McGill University			Coverslip holder up (22x22mm coverslip)			
			5 bis	Edition	Sheet	
			1 / 1	1 / 1		



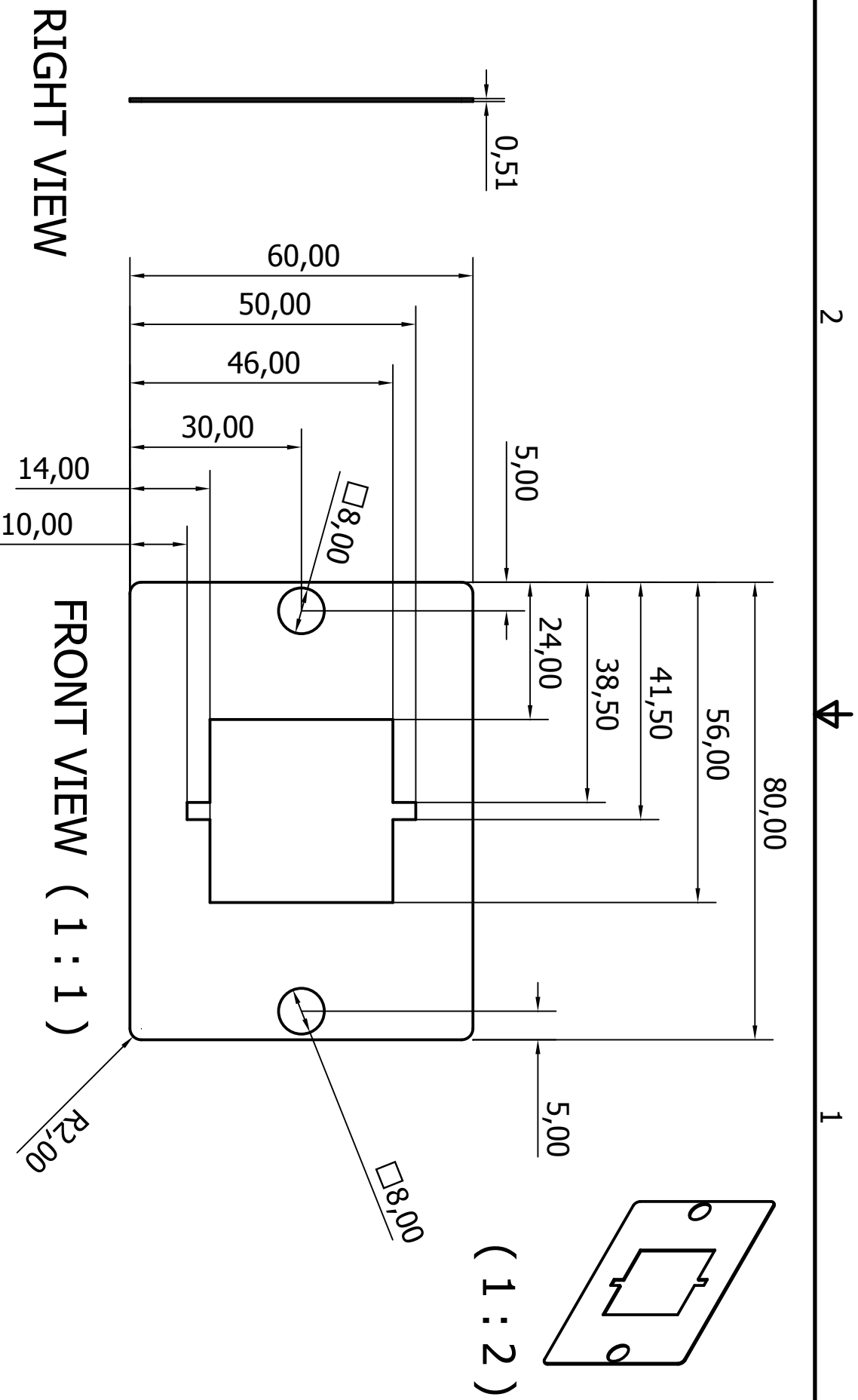
ISO 2768-f

Designed by	Checked by	Approved by	Date	Date		
Arthur Queval			07/04/2008	13/02/2008		

McGill University

Outer gasket (12X24mm coverslip)

6	Edition	Sheet
		1 / 1



ISO 2768-f

Designed by	Checked by	Approved by	Date	Date	
Arthur Queval			07/04/2008	13/02/2008	

Outer gasket (22x22mm coverslip)

McGill University

6 bis

Edition

Sheet
1 / 1

A

B

A

B

RIGHT VIEW

FRONT VIEW (1 : 1)

(1 : 2)

2

2

1

1

1

1

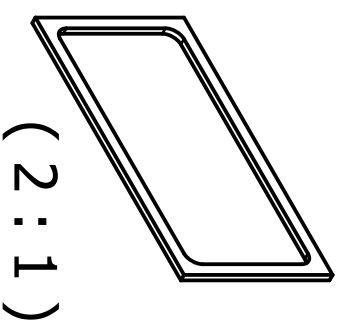
2



1

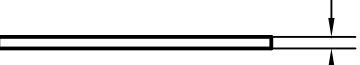
B

B

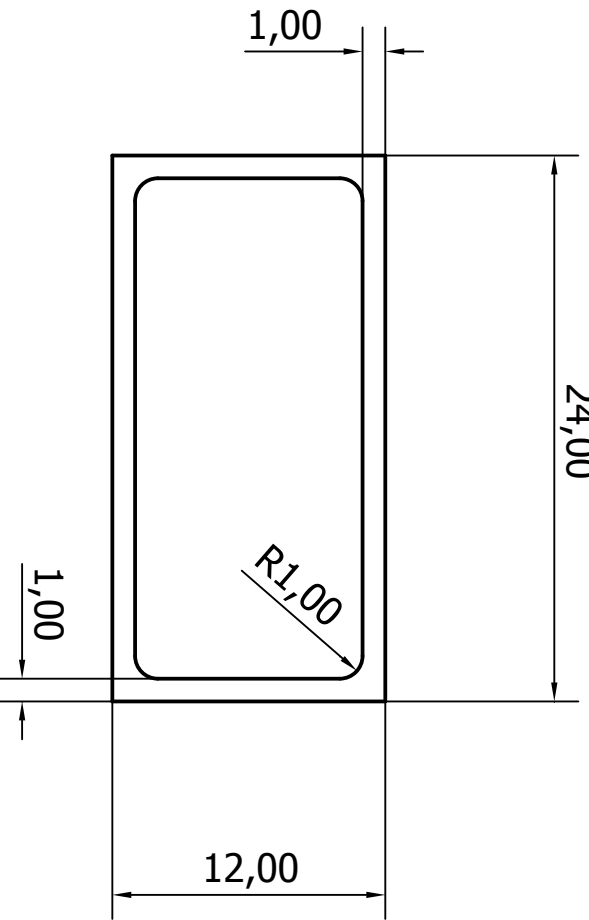


(2 : 1)

0,51



1,00



RIGHT VIEW

FRONT VIEW (3 : 1)

A

A

ISO 2768-f

Designed by Arthur Queval	Checked by	Approved by	Date 07/04/2008	Date 13/02/2008	
------------------------------	------------	-------------	--------------------	--------------------	--

McGill University

Inner gasket (12x24 mm coverlip)

7

Edition
1 / 1

2



1

2



1

B

0,51

1,00

22,00

1,00

22,00

R1,00

(2 : 1)

B



A

RIGHT VIEW

FRONT VIEW (3 : 1)

ISO 2768-f

Designed by Arthur Queval	Checked by	Approved by	Date 07/04/2008	Date 13/02/2008		
------------------------------	------------	-------------	--------------------	--------------------	--	--

McGill University

Inner gasket (22x22mm coverslip)

7 bis

Edition

Sheet
1 / 1

2



1

A