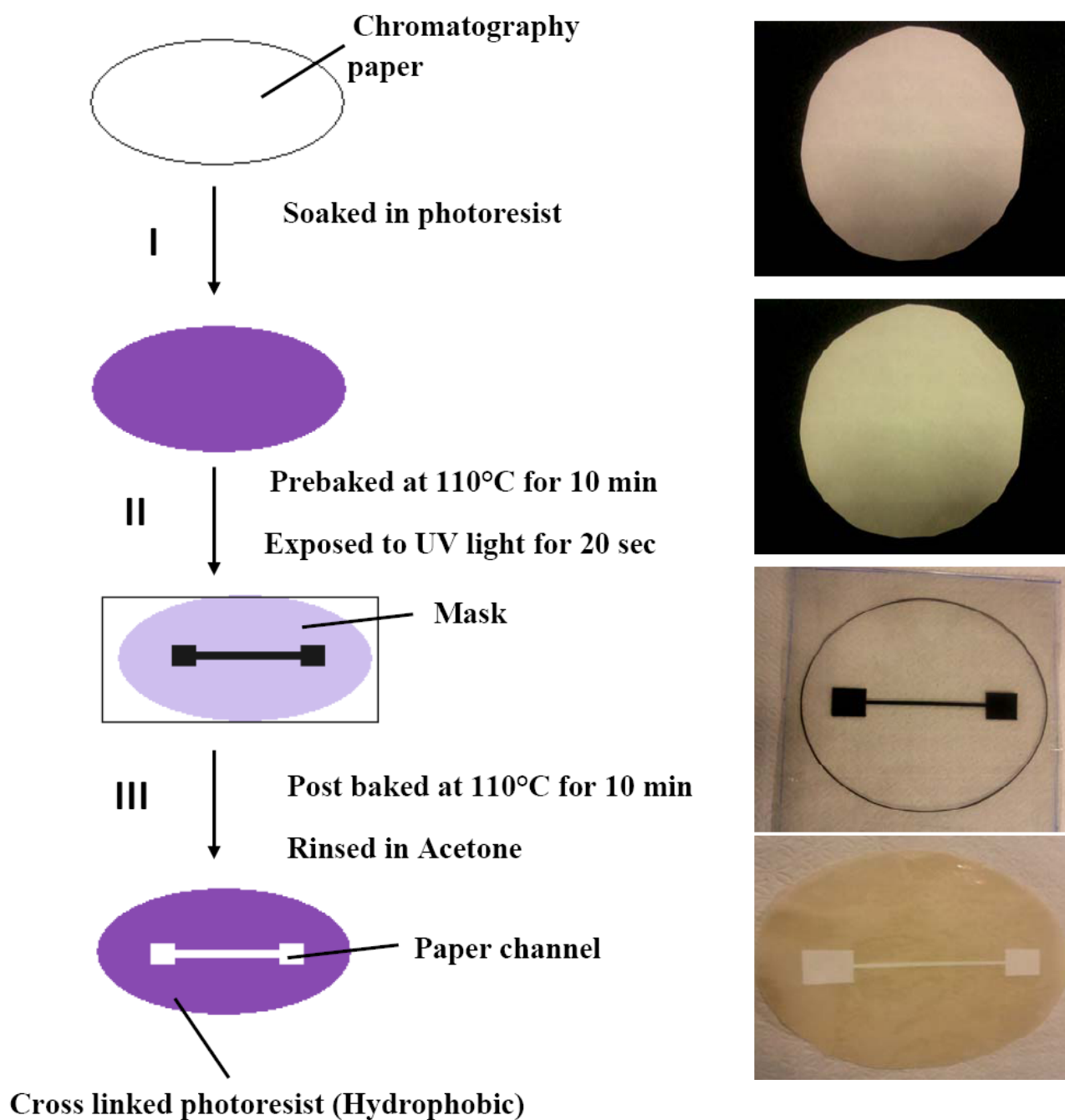
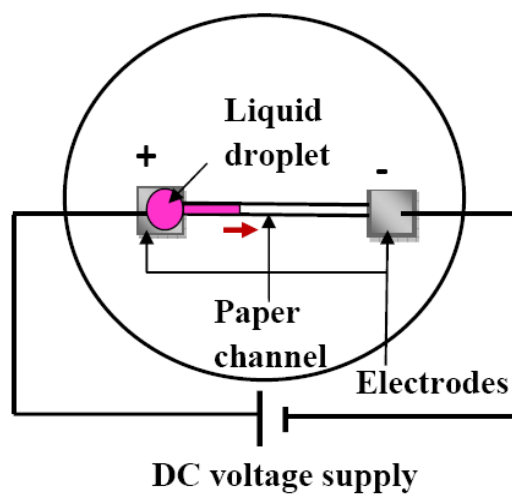


## Electronic Supplementary Information

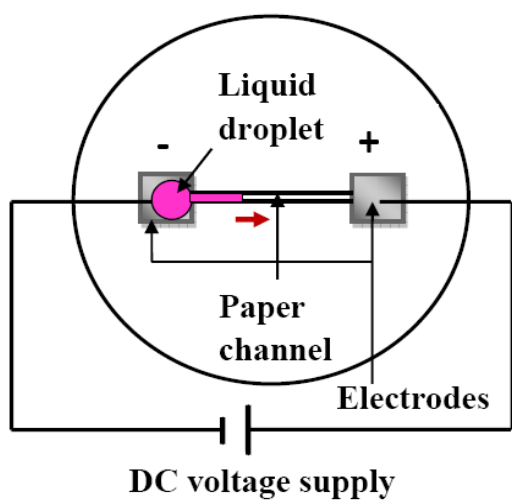


**Figure S1:** Schematic depicting the fabrication procedure of the device. The images on the right depict the actual set-up at each step of fabrication. The electrodes have been ‘sketched’ onto the square pads at the ends of the paper channel.

## Electronic Supplementary Information



**(a) Left electrode activated: 'L' configuration**



**(b) Right electrode activated: 'R' configuration**

**Figure S2:** Schematics representing the two different polarity configurations for the potential applied at the electrodes of the device (a) Left electrode at a higher potential, i.e. 'L' configuration (b) Right electrode at a higher potential, i.e. 'R' configuration