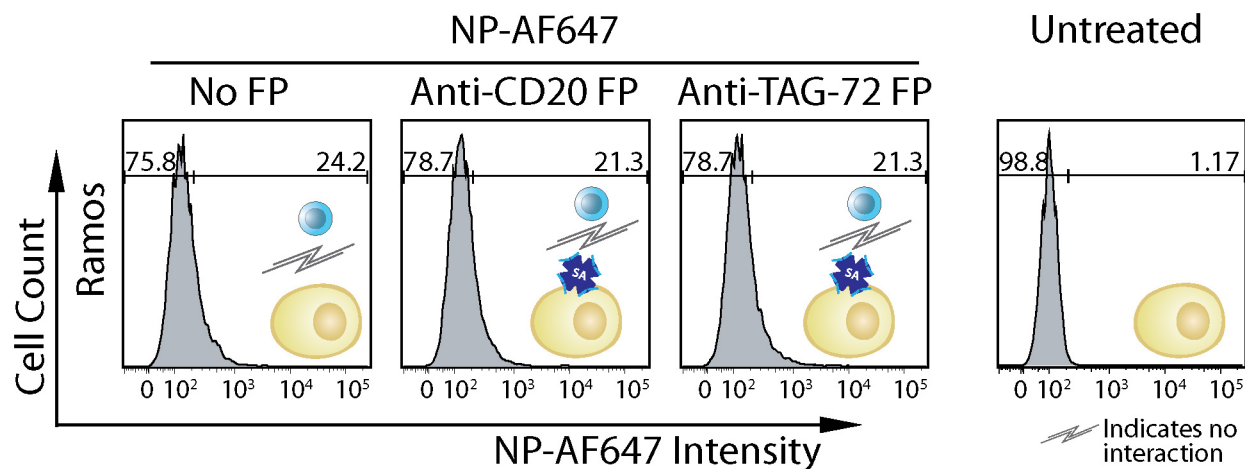
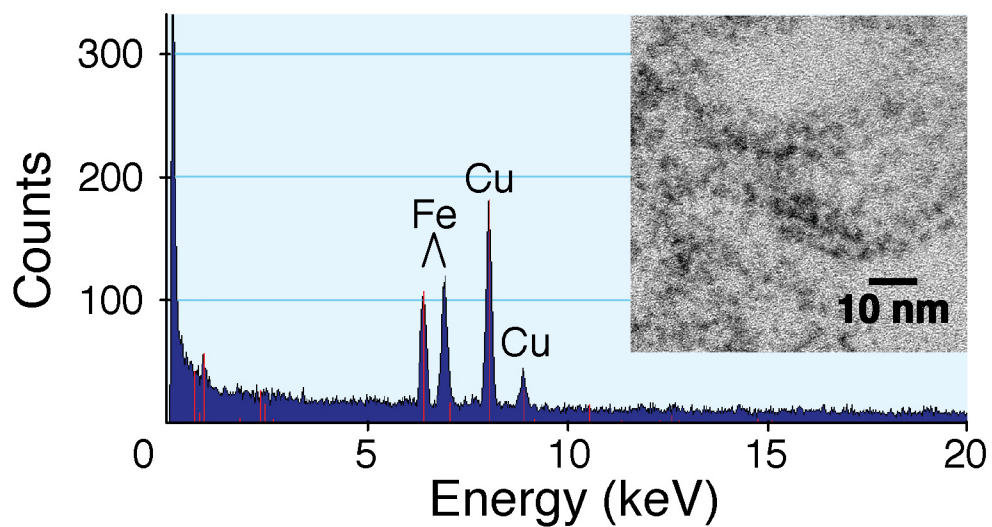


## Supplementary Information

### Supplementary Figures



**Fig. S1** Low cellular interaction with non-targeting nanoparticles (NP-AF647). Flow cytometry analysis of Ramos cells exposed to non-targeting NP-AF647 nanoparticles. No specific cell binding was observed by this control nanoparticle regardless of cell pretreatment with FPs.



**Fig. S2** Nanoparticle internalization confirmed by TEM/EDX. EDX spectra acquired from internalized nanoparticles (inset) showing distinct iron peaks. Copper peaks from the TEM sample grid were also observed.