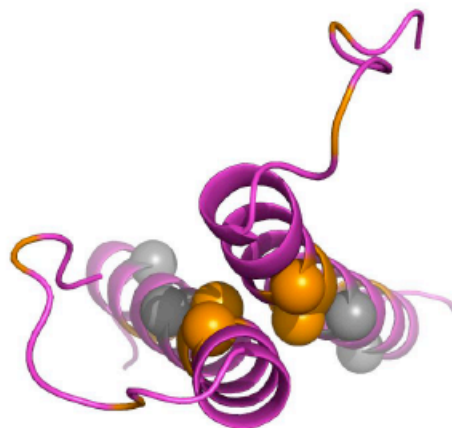


Modeling of Glycophorin A on *Rba. sphaeroides* bc₁ complex

Glycophorin A uses a GxxxG motif to mediate binding between a pair of helices



GpA and Subunit IV both contain a small-xxx-small motif in the TM spanning region of the helix. The site previously identified on the ISP has a corresponding site.

```
GPA  VQLAHHFSEPEITLIIFGV MAGVIGTILLISYGIRRLIKK  
SIV      YRYRLGGFASGALLALALAGIFSTGNFGGS  
ISP      GTRRDFLYYATAGAGAVATGAAVWPLINQM
```

This forms the basis for the model in which Subunit IV interacts with the FeS protein (ISP). If Subunit IV is mimicked with the NMR structure of GpA and bound at the ISP site, the following is obtained:

