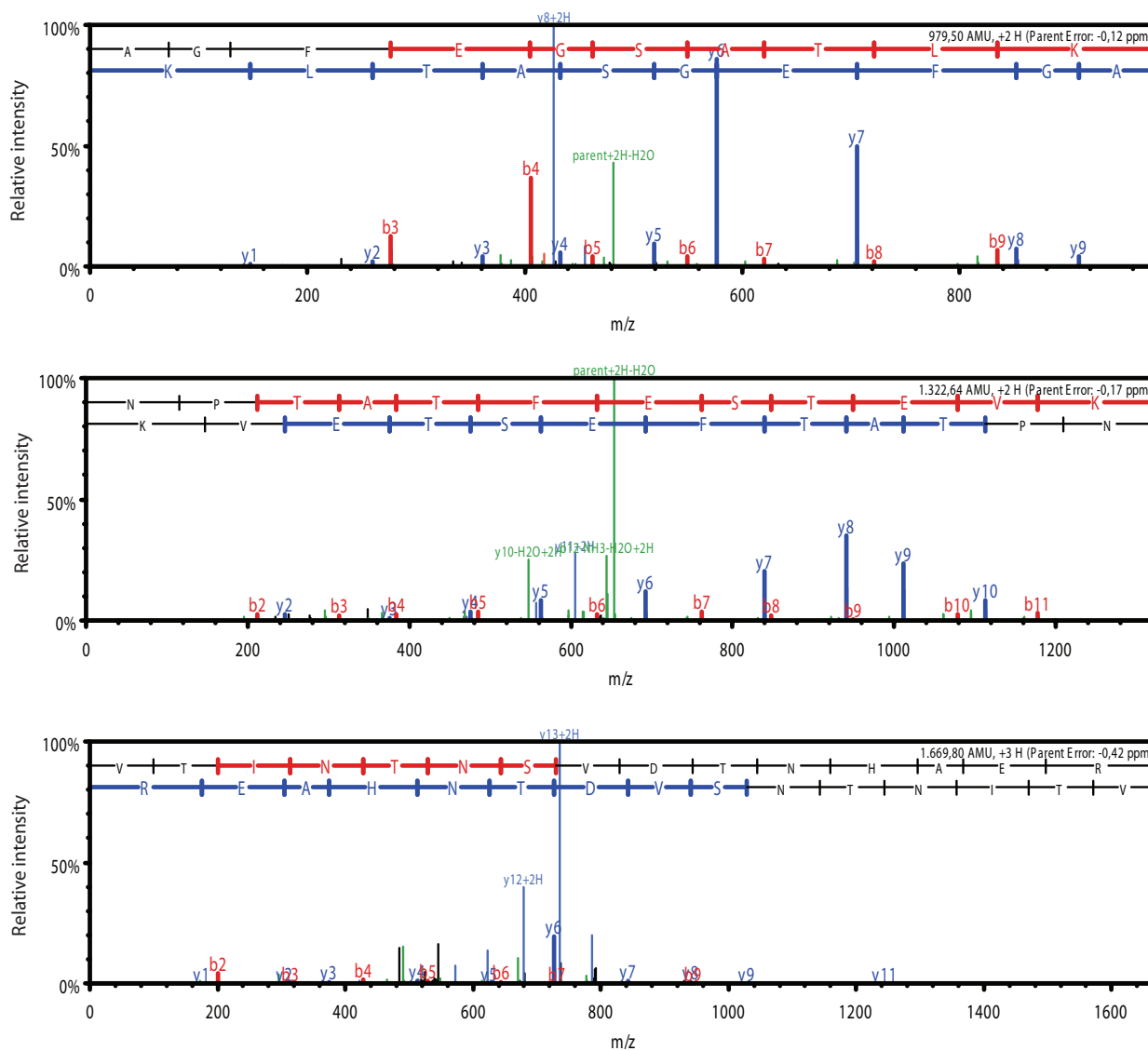


Supplementary figure 1. Identification by LC-MS/MS of proteins in excised PVDF membrane spot corresponding to Zinc signal. A, PA0423 protein sequence and peptides identified (in yellow). B, MS/MS peptide spectrum corresponding to PA0423. C, PA5217 protein sequence and peptides identified (in yellow). D, MS/MS peptide spectrum corresponding to PA5217.

A

MLKKTLAALA LGSALFTAGQ AMAADYKIDK EGQHAFIEFR IKHLGYSWLY GRFNDFDGSF
 TFDEKNPSAD KVK **V**T**I**N**T**N**S** **V**D**T**N**H**A**E**R DK HLRSGDFLNV SK **N**P**T**A**T**F**E**S **T**E**V**K ANGDSA
 DITGNLTLNG VTKPVTIKAK LIGQGDDPWG GYR **A**G**F**E**G**S**A** **T**L**K**L**K**D**F**G**I**K MDLGPASQEV
 ELLLSVEGIR Q

B



C

```

MQASKALLAA LALGITGLAQ AADEVVYSS R IDELIKPVF DAYTSK TGVK VK FITDKEAP
LMAR IKAEGA NTPADLLLTV DAGNLWQAEQ MGLLQPFKSA TIERNIP SQY R SSTD SWTGL
SLR ARTIVYS TERVKPEELS TYEALADKQW EGRLCLRTAK KVVNQSLTGT LIETHGAQKT
EEILQGWN L ATDVFADDN AVIQAVDAGQ CDVGIVNTYY YGRLHKQNP N LRVKLFWPNQ
ADRGVHVNLS GIGLTRHAPH PEAALVVEW MTGPDAQALF AGINQEF PAN PQVAPSAEVA
SWG SFKADSI PVEVAGKRQA EAIRLMDRAG WN
    
```

D

