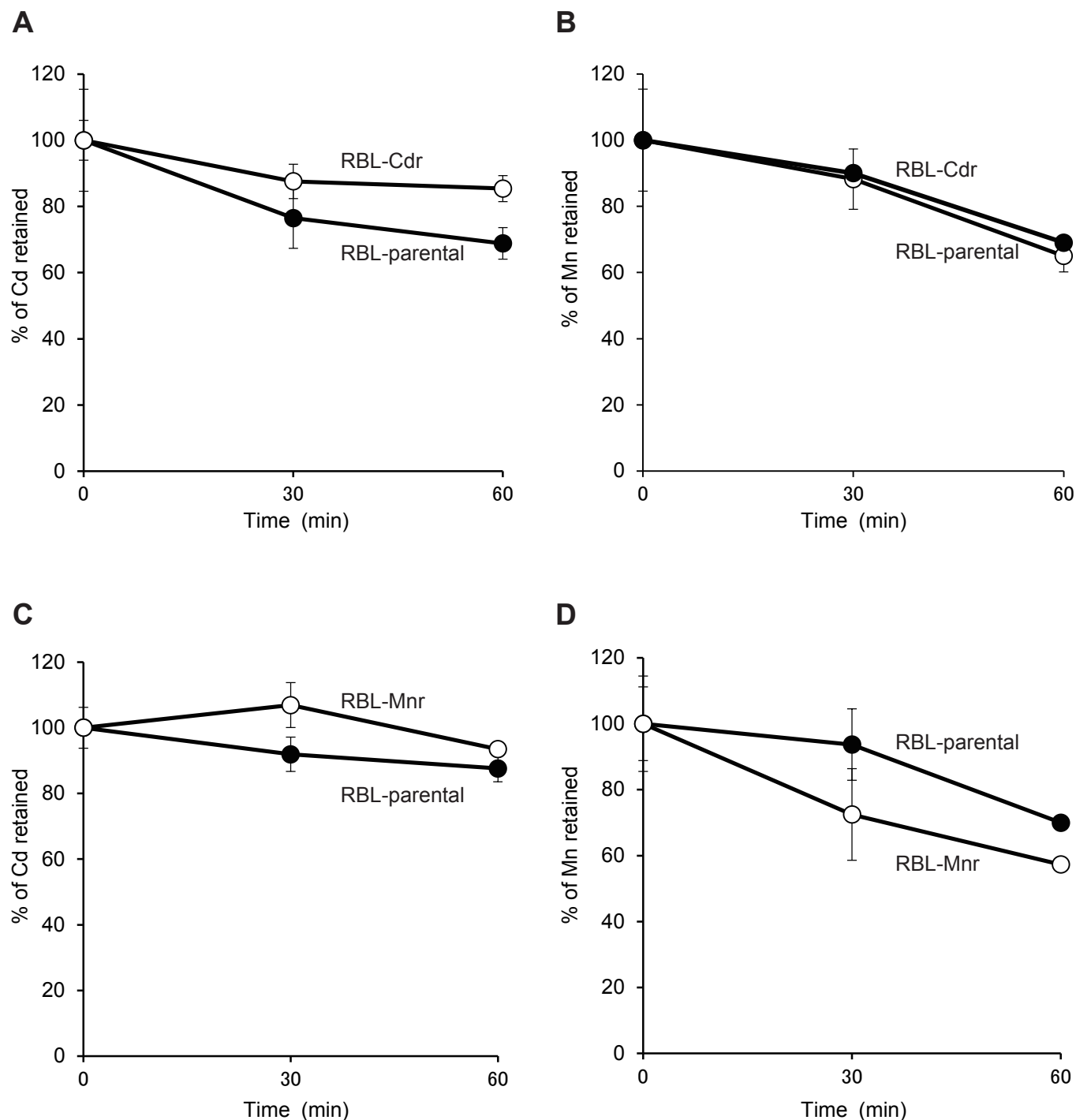


Supplementary Figure. 1



The efflux rates of cadmium and manganese in RBL-Cdr, RBL-Mnr, and parental RBL-2H3 cells. Cells were exposed to 1 μ M CdCl₂ or MnCl₂ for 2 h, washed with PBS containing 0.05% EDTA, and then incubated further with freshly supplemented metal-free medium. The concentrations of cadmium and manganese retained in the cells were determined 30 and 60min after the change of the medium by using tracers of ¹⁰⁹Cd and ⁵⁴Mn, respectively. Data are expressed as means \pm S.D.

A and B; Comparison of the efflux rates of cadmium (A) and mananese (B) between RBL-Cdr and parental RBL-2H3 cells.

C and D; Comparison of the efflux rates of cadmium (C) and manganese (D) between RBL-Mnr and parental RBL-2H3 cells.