

Supplementary Table 1

Lines	Gene number	Ecotype	Stock Ref.	Described in	Expr. level vs wild-type *
<i>hma2-4</i>	At4g30110	Ws	SALK-050924	Hussain <i>et al.</i> 2004	nil
<i>hma4-2</i>	At2g10110	Ws	SALK-034393	Hussain <i>et al.</i> 2004	nil
<i>35S::HMA4</i>	At2g10110	Col	NASC N9416-17	Verret <i>et al.</i> 2004	Fig 44 F. Verret's PhD thesis 2004
<i>35S::HMA3</i>	At4g30120	Ws	request to authors	Morel <i>et al.</i> 2009	Tab S2 in Morel <i>et al.</i> 2009

Table S1 Main characteristics of the different lines used in this study. * Quantification using ImageJ software estimated an increase in the expression levels by 5.8 – 6.8 fold for the *35S::HMA3* lines and around 6 fold for the *35S::HMA4* lines.

Supplementary Figure 1

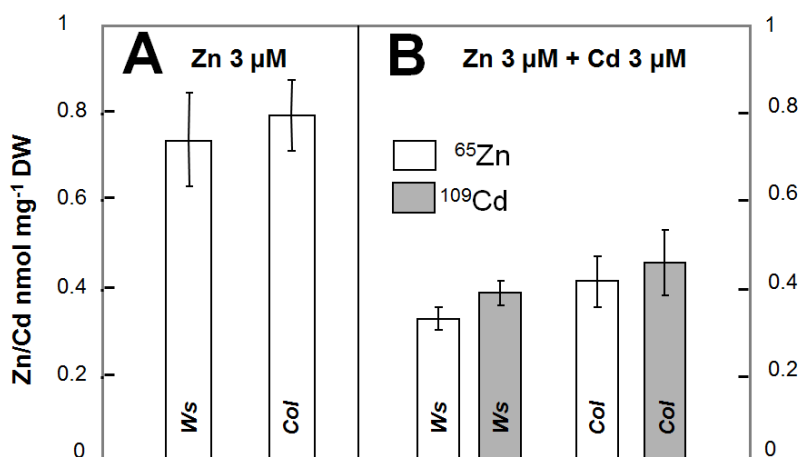


Fig. S1 Daily uptake of Zn (white bars) and Cd (grey bars) when plants were placed in 3 μM Zn (A) or 3 μM Zn plus 3 μM Cd (B) as followed through ⁶⁵Zn and ¹⁰⁹Cd absorption. Values are the mean of at least 3 experiments; error bars represent standard error to the mean.

