

Mapping the 3D distribution of CdSe nanoparticles in highly oriented and nanostructured hybrid P3HT:CdSe films grown by directional epitaxial crystallization

L. Roiban, L. Hartmann, A. Fiore, D. Djurado, F. Chandezon, P. Reiss,
J.-F. Legrand, S. Doyle, M. Brinkmann, O. Ersen

SUPPORTING INFORMATION

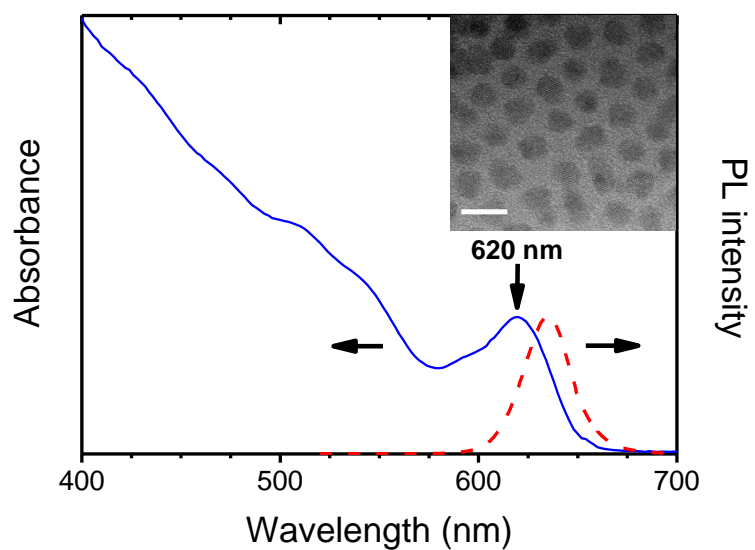


Figure SI 1 : Absorption and photoluminescence spectra recorded in chloroform solution of the CdSe colloidal nanocrystals. Inset shows a TEM micrograph of the NCs (scale bar = 10 nm).

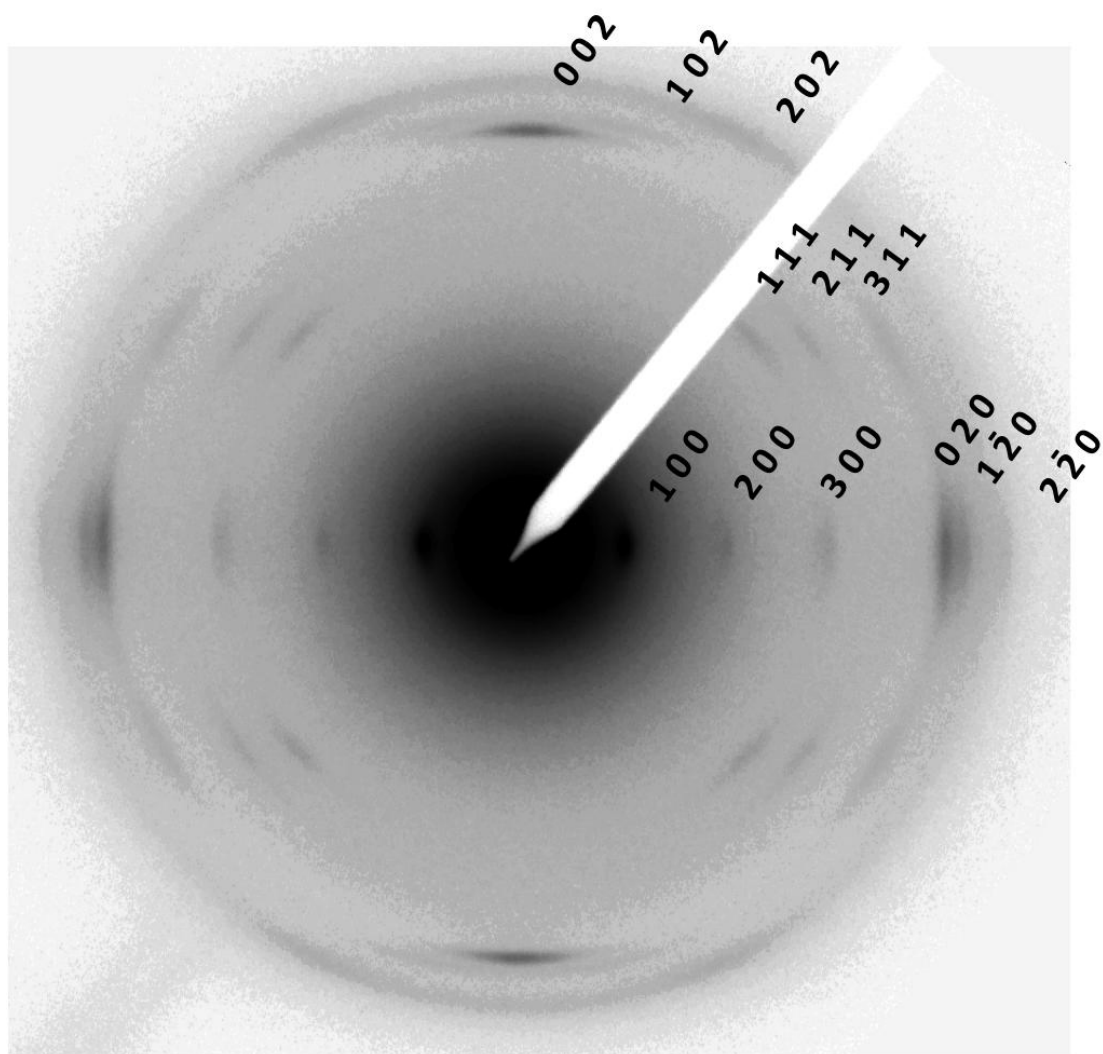


Figure SI 2. Indexed electron diffraction pattern of a P3HT/CdSe thin film (1:1 wt) oriented by slow-DEC in TCB (200 $\mu\text{m/s}$). The indexation has been made using the structure by Kayunkid et al.(1)

(1) Kayunkid, N. ; Sureeporn, U. and Brinkmann, M. *Macromolecules* 2010, 43, 4967.