

Supporting Information

Ag⁺ Insertation into 3D Hierarchical Rose-like Cu_{1.8}Se Nanocrystalline with Tunable Band Gap and Morphology Genetic

Liwei Mi^{*a}, Wutao Wei^{a,b}, Zhi Zheng^a, Guangshan Zhu^c, Hongwei Hou^a, Weihua Chen^{*b} and Xinxin Guan^{*b}

^a Key Laboratory for Micro-Nano Energy Storage and Conversion Materials of Henan Province, Institute of Surface Micro and Nano Materials, Xuchang University, Henan 461000, China

^b Department of Chemistry, Zhengzhou University, Henan 450001, China

^c State Key Laboratory of Inorganic Synthesis and Preparative Chemistry, Jilin University, Changchun 130012, China

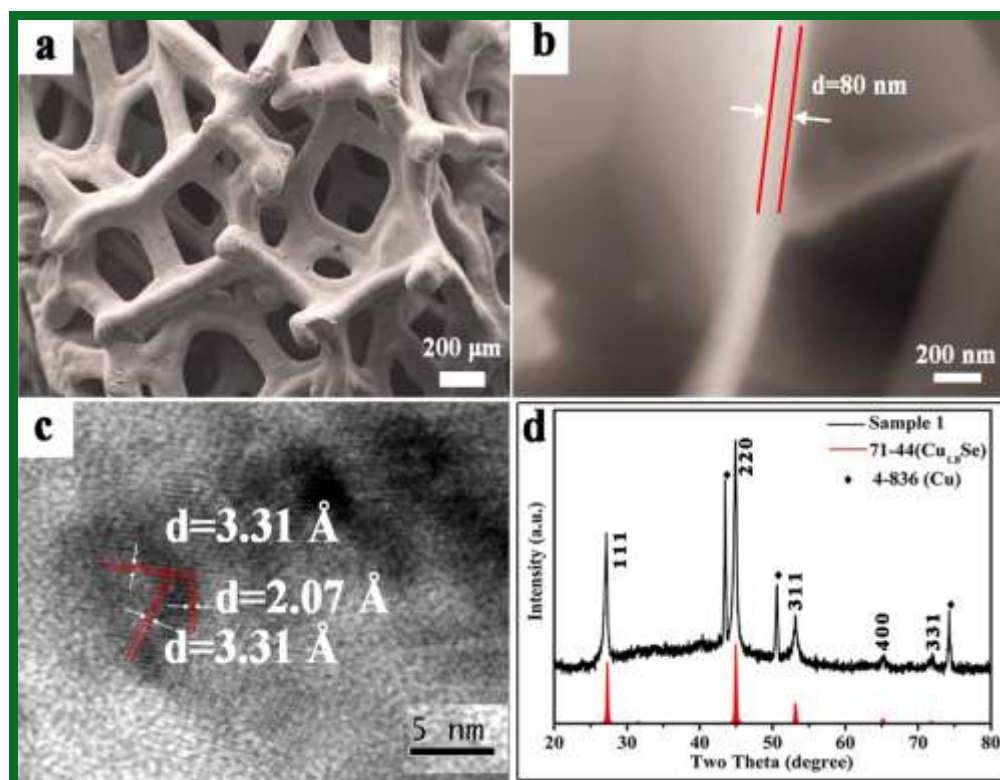


Figure S1 (a) the SEM image of foam copper, (b) the SEM image of a single nanosheet as the primary building block of Cu_{1.8}Se microspheres, (c) the HRTEM image of Sample 1, and (d) the XRD pattern of Sample 1 without any treatment.

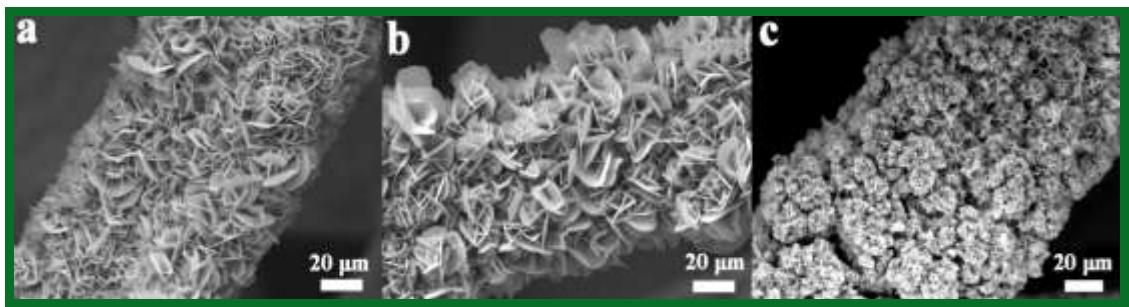


Figure S2 The SEM images of Sample **4** (a), **5** (b), and **8** (c).

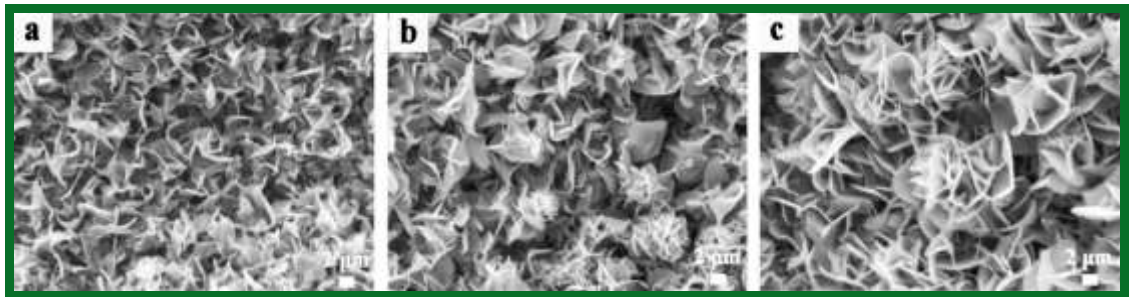


Figure S3 The SEM images of Sample **10** (a), **11** (b), and **13** (c).

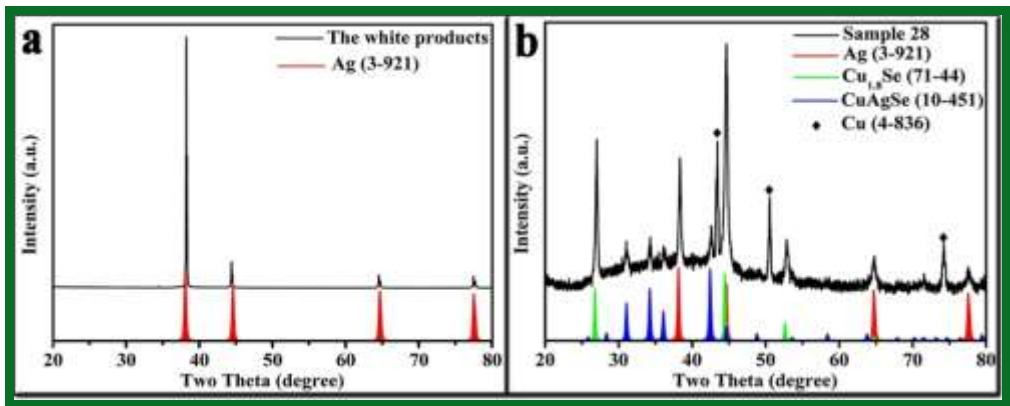


Figure S4 (a) the XRD pattern of the white product on the surface of Sample **28**. (b) the XRD pattern of Sample **28**.

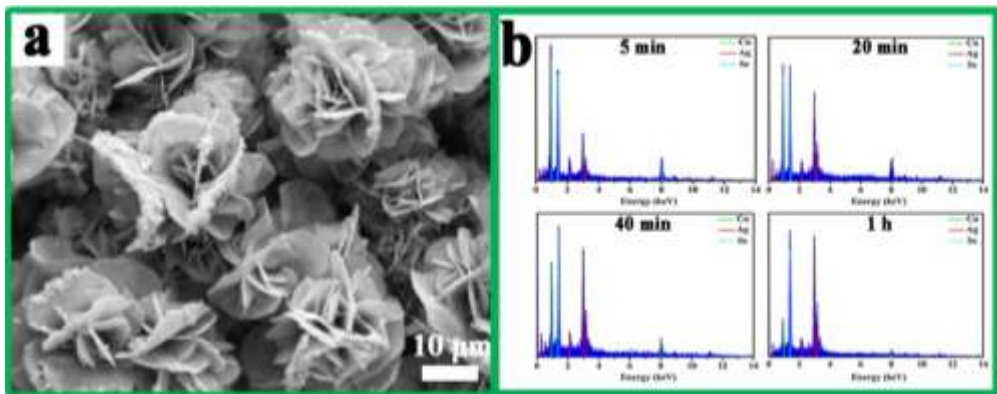


Figure S5 (a) the SEM image of Sample **27**, (b) the EDS spectra of Sample **24**, **26**, **22** and **27**.

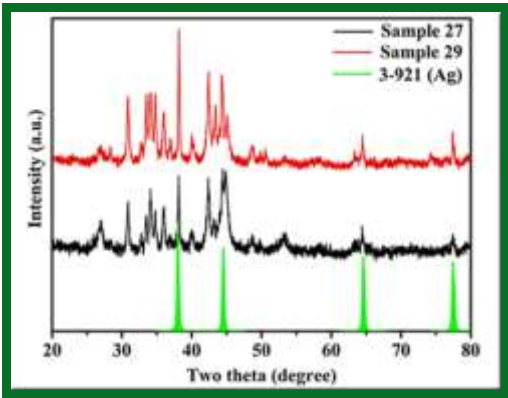


Figure S6 the XRD pattern of Sample **29** and **27**.