

Supporting Information

Bacterial Adhesion Force Quantification by Fluidic Force Microscopy

Eva Potthoff, Dario Ossola, Tomaso Zambelli*, Julia A. Vorholt*

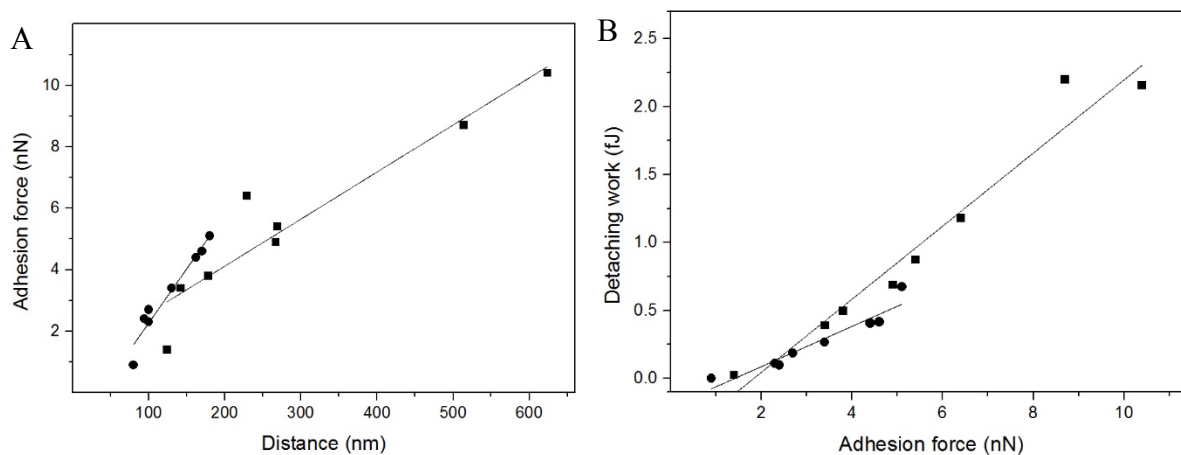


Figure S1. A) Adhesion force–distance and B) adhesion force–detaching work correlation of *E. coli* on PLL for setpoints of 1 and 10 nN. Circle: 1 nN setpoint, square: 10 nN.

Video S1. Detachment of a *S. pyogenes* cell chain from the glass substrate. The cantilever is approached on the outermost adherent cell of a chain and four bacteria were sequentially detached. The sequential cell detachment suddenly stopped after four bacteria. This possibly occurred because bacteria–glass interactions became too strong or the maximal probe retraction was achieved and the cells were detached from the cantilever and flipping back on the surface.