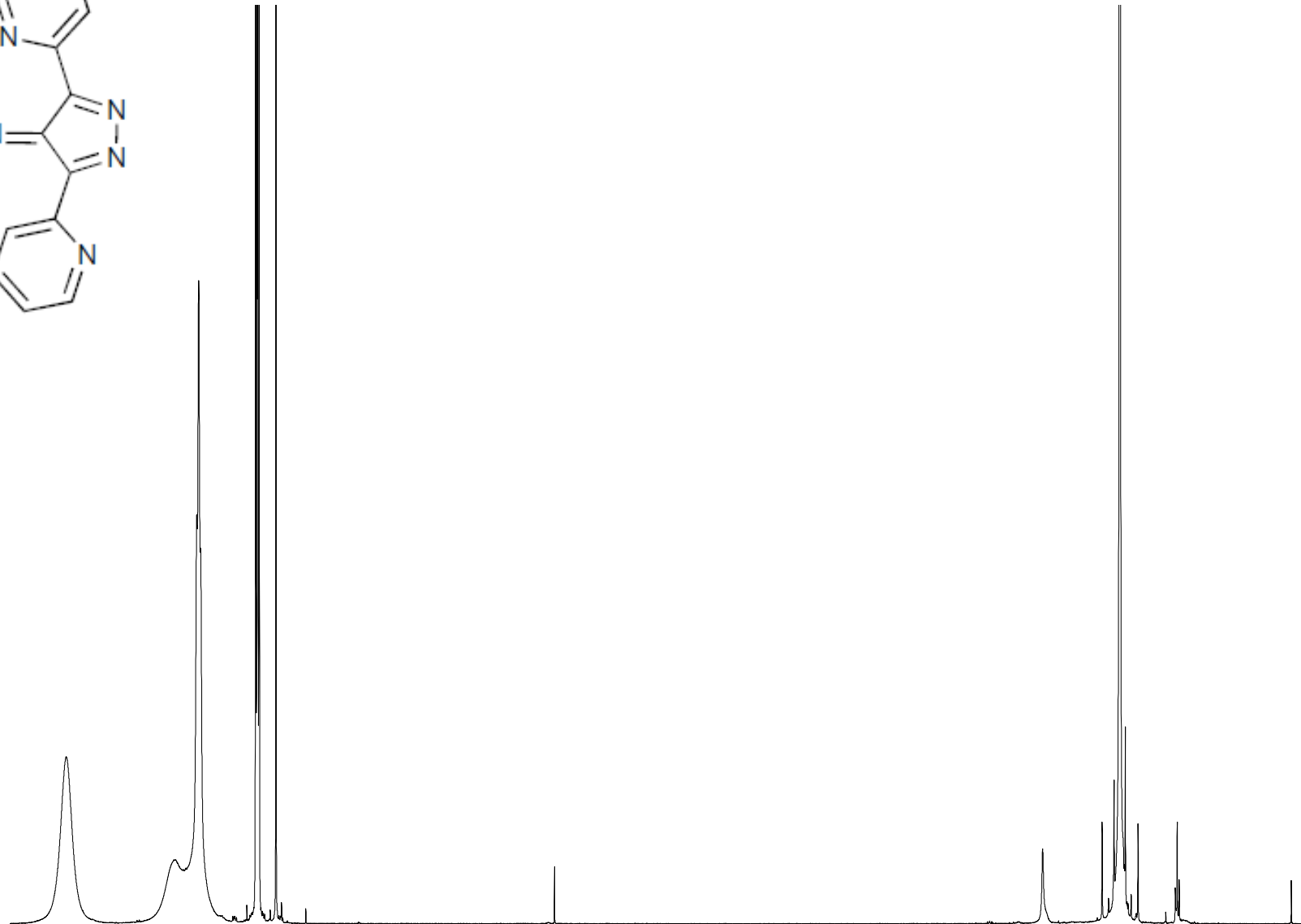


Current Data Parameters
NAME fjl-hs543
EXPNO 10
PROCNO 1

F2 - Acquisition Parameters
Date_ 20110323
Time 11.24
INSTRUM drx500
PROBHD 5 mm CPDUL Z-
PULPROG zg30
TD 65536
SOLVENT CDC13
NS 16
DS 0
SWH 8503.401 Hz
FIDRES 0.129752 Hz
AQ 3.8535669 sec
RG 18
DW 58.800 usec
DE 6.00 usec
TE 300.0 K
D1 2.00000000 sec
TD0 1

==== CHANNEL f1 =====
NUC1 1H
P1 14.75 usec
PL1 -6.00 dB
SFO1 500.0532723 MHz

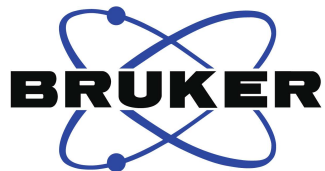
F2 - Processing parameters
SI 65536
SF 500.0500219 MHz
WDW EM
SSB 0
LB 0.10 Hz
GB 0
PC 1.00



9.0 8.5 8.0 7.5 7.0 6.5 6.0 5.5 5.0 4.5 4.0 3.5 3.0 2.5 2.0 1.5 1.0 ppm

1.96
4.02
2.00

9.15



Current Data Parameters
NAME fjl-hs543
EXPNO 11
PROCNO 1

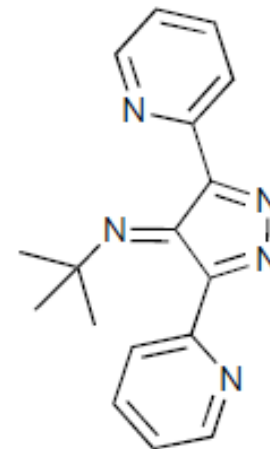
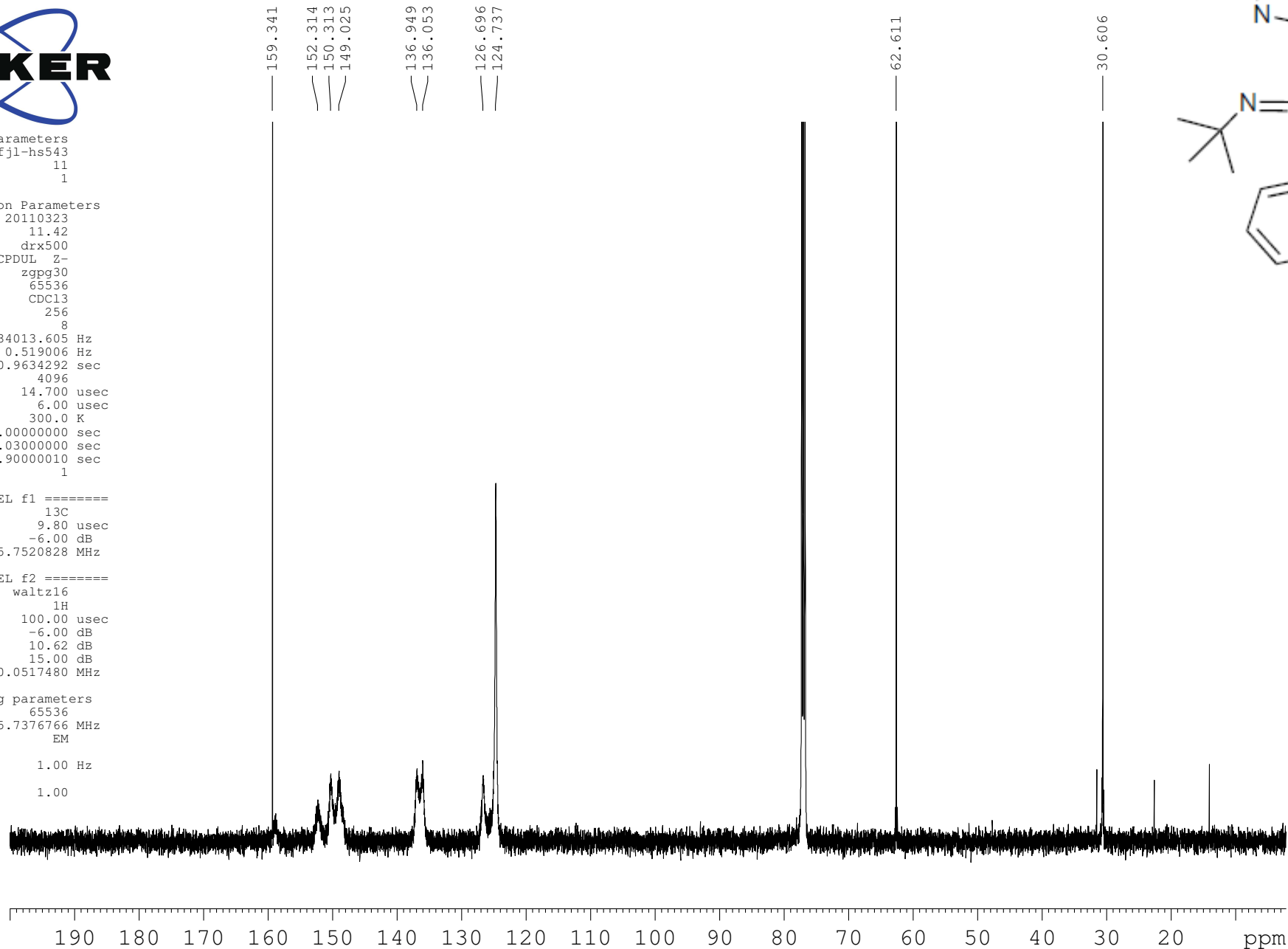
F2 - Acquisition Parameters

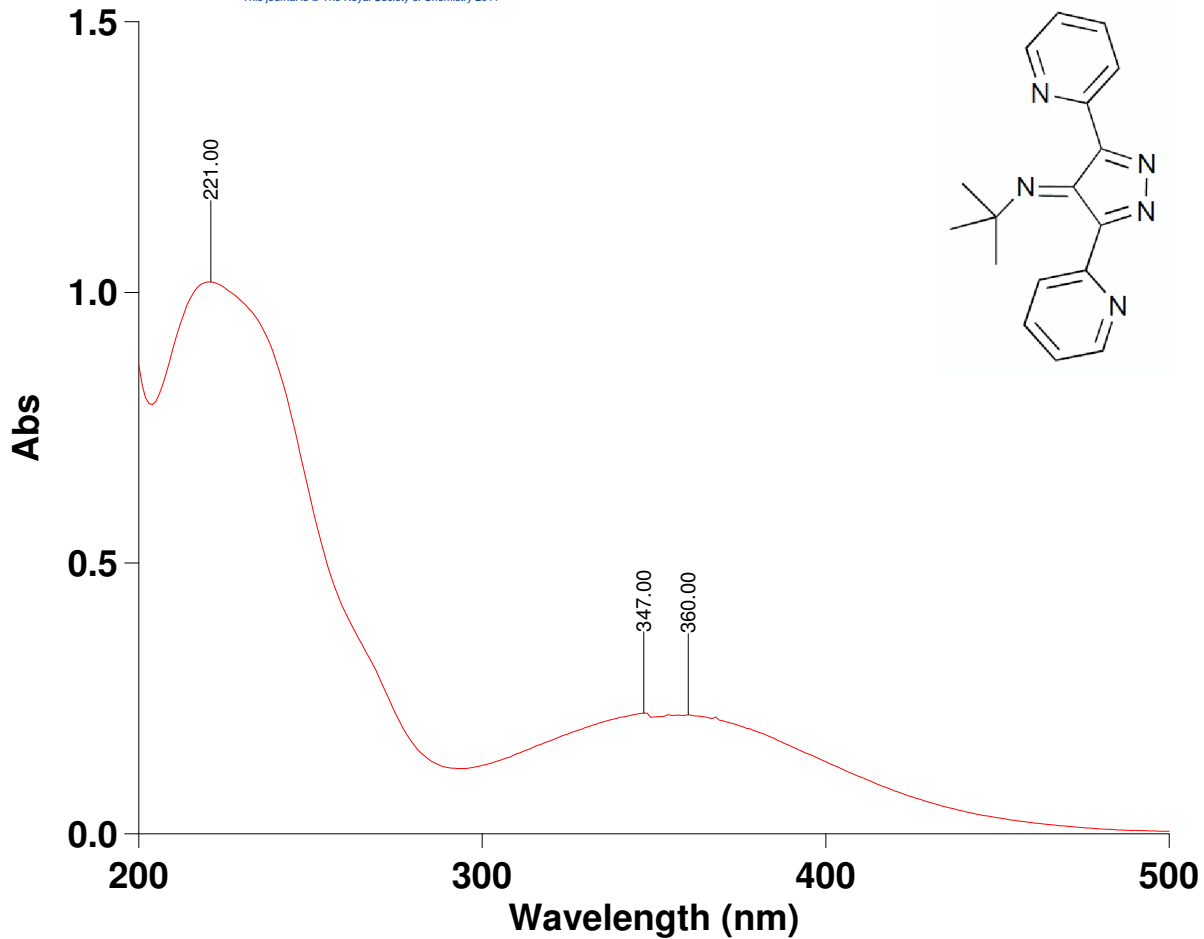
Date_ 20110323
Time 11.42
INSTRUM drx500
PROBHD 5 mm CPDUL Z-
PULPROG zgpg30
TD 65536
SOLVENT CDCl3
NS 256
DS 8
SWH 34013.605 Hz
FIDRES 0.519006 Hz
AQ 0.9634292 sec
RG 4096
DW 14.700 usec
DE 6.00 usec
TE 300.0 K
D1 3.0000000 sec
d11 0.0300000 sec
DELTA 2.9000010 sec
TD0 1

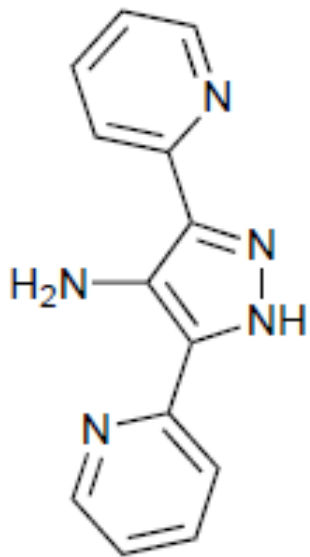
=====
CHANNEL f1
NUC1 13C
P1 9.80 usec
PL1 -6.00 dB
SFO1 125.7520828 MHz

=====
CHANNEL f2
CPDPRG2 waltz16
NUC2 1H
PCPD2 100.00 usec
PL2 -6.00 dB
PL12 10.62 dB
PL13 15.00 dB
SFO2 500.0517480 MHz

F2 - Processing parameters
SI 65536
SF 125.7376766 MHz
WDW EM
SSB 0
LB 1.00 Hz
GB 0
PC 1.00





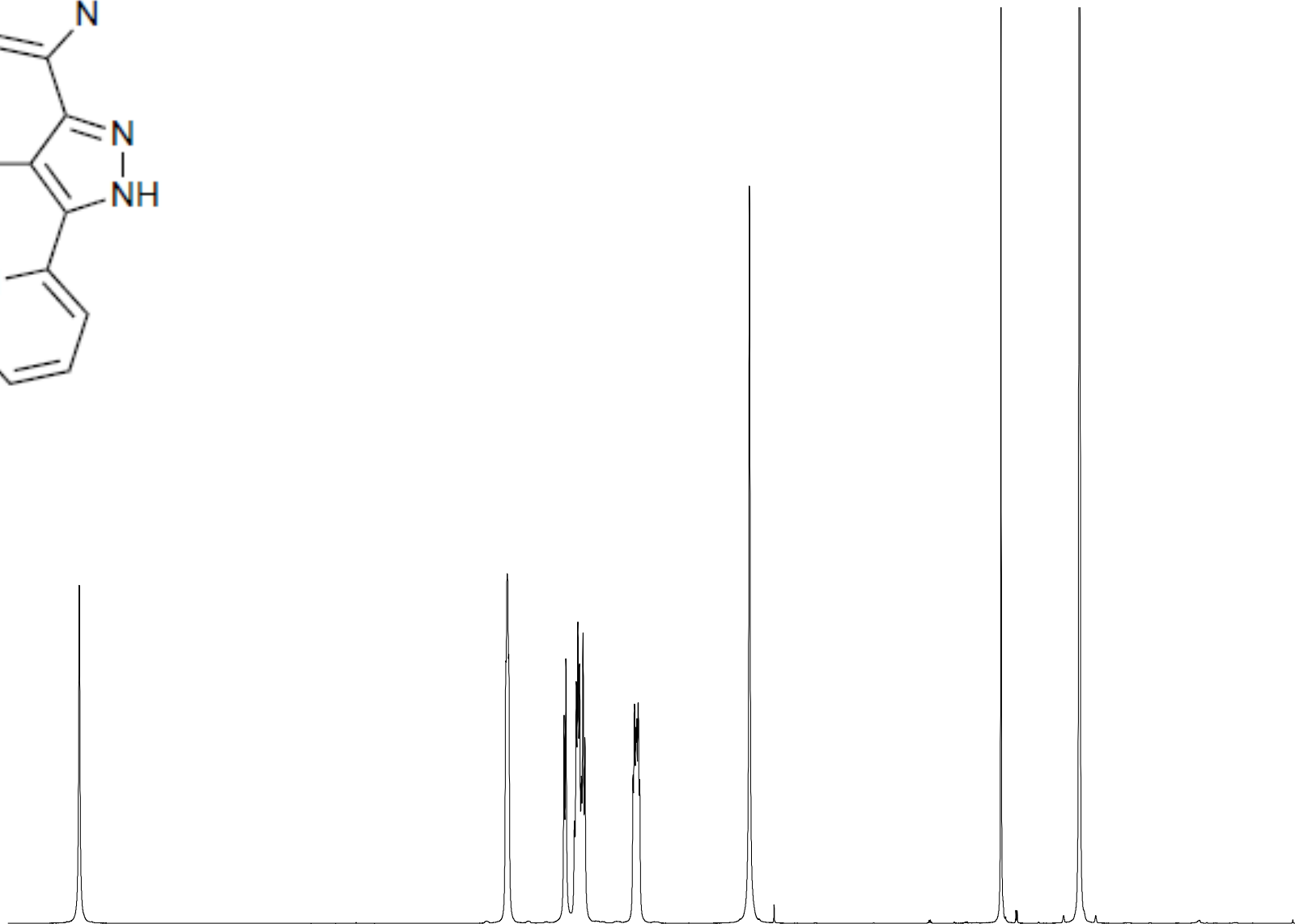


Current Data Parameters
NAME fjl-hs571(mislabeledAs560)
EXPNO 10
PROCNO 1

F2 - Acquisition Parameters
Date_ 20110615
Time 1.14
INSTRUM spect
PROBHD 5 mm CPQNP 1H/
PULPROG zg30
TD 65536
SOLVENT DMSO
NS 16
DS 2
SWH 11160.714 Hz
FIDRES 0.170299 Hz
AQ 2.9360628 sec
RG 32
DW 44.800 usec
DE 106.71 usec
TE 300.0 K
D1 1.00000000 sec
TD0 1

==== CHANNEL f1 =====
NUC1 1H
P1 11.75 usec
PL1 1.50 dB
PL1W 8.18008518 W
SFO1 400.1428010 MHz

F2 - Processing parameters
SI 65536
SF 400.1400175 MHz
WDW EM
SSB 0
LB 0.30 Hz
GB 0
PC 1.50



13

12

11

10

9

8

7

6

5

4

3

2

1 ppm

0.99

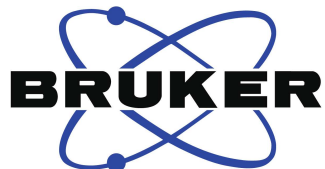
1.94

1.01

2.97

1.97

1.97



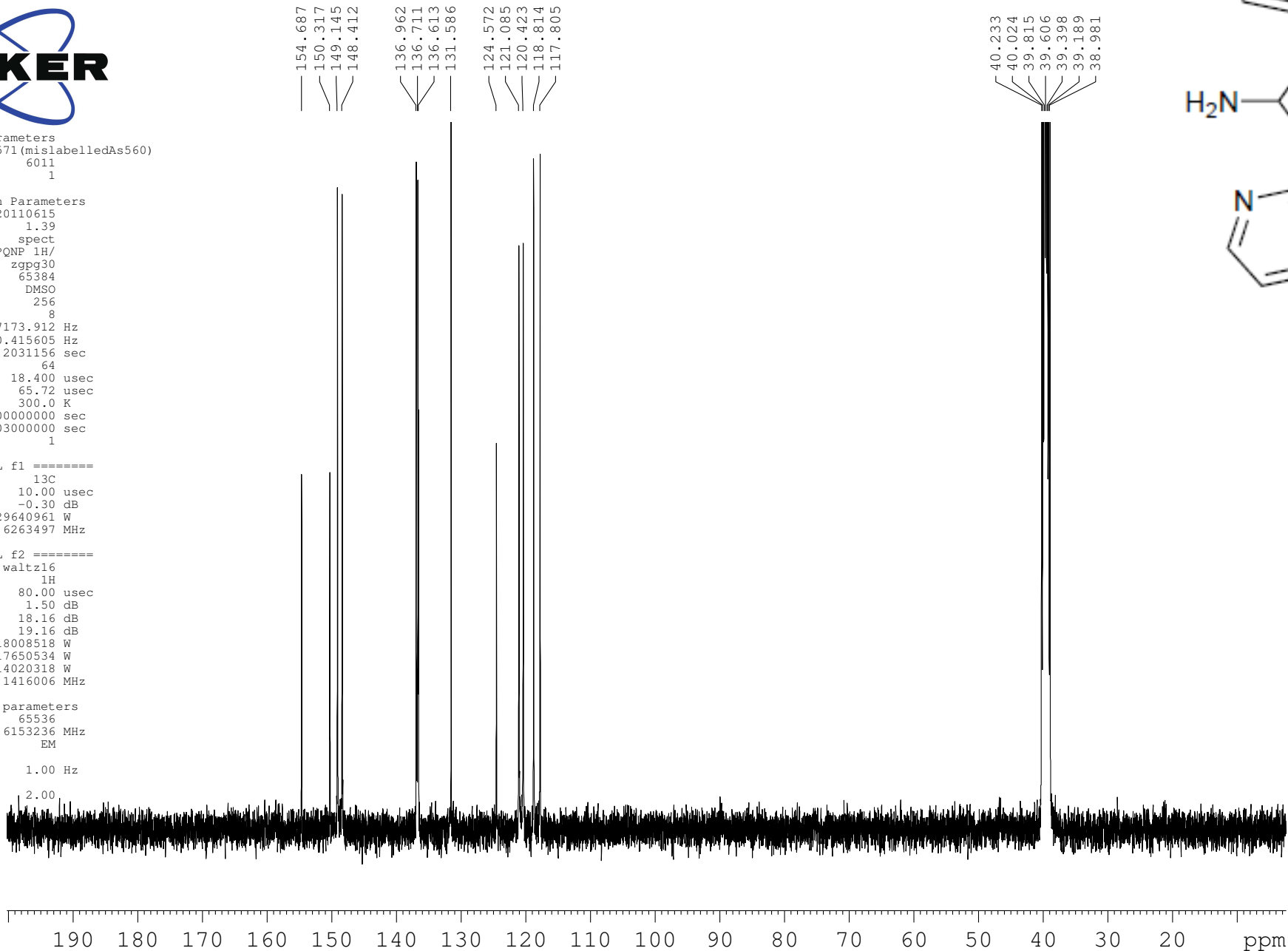
Current Data Parameters
NAME fjl-hs571 (mislabeledAs560)
EXPNO 6011
PROCNO 1

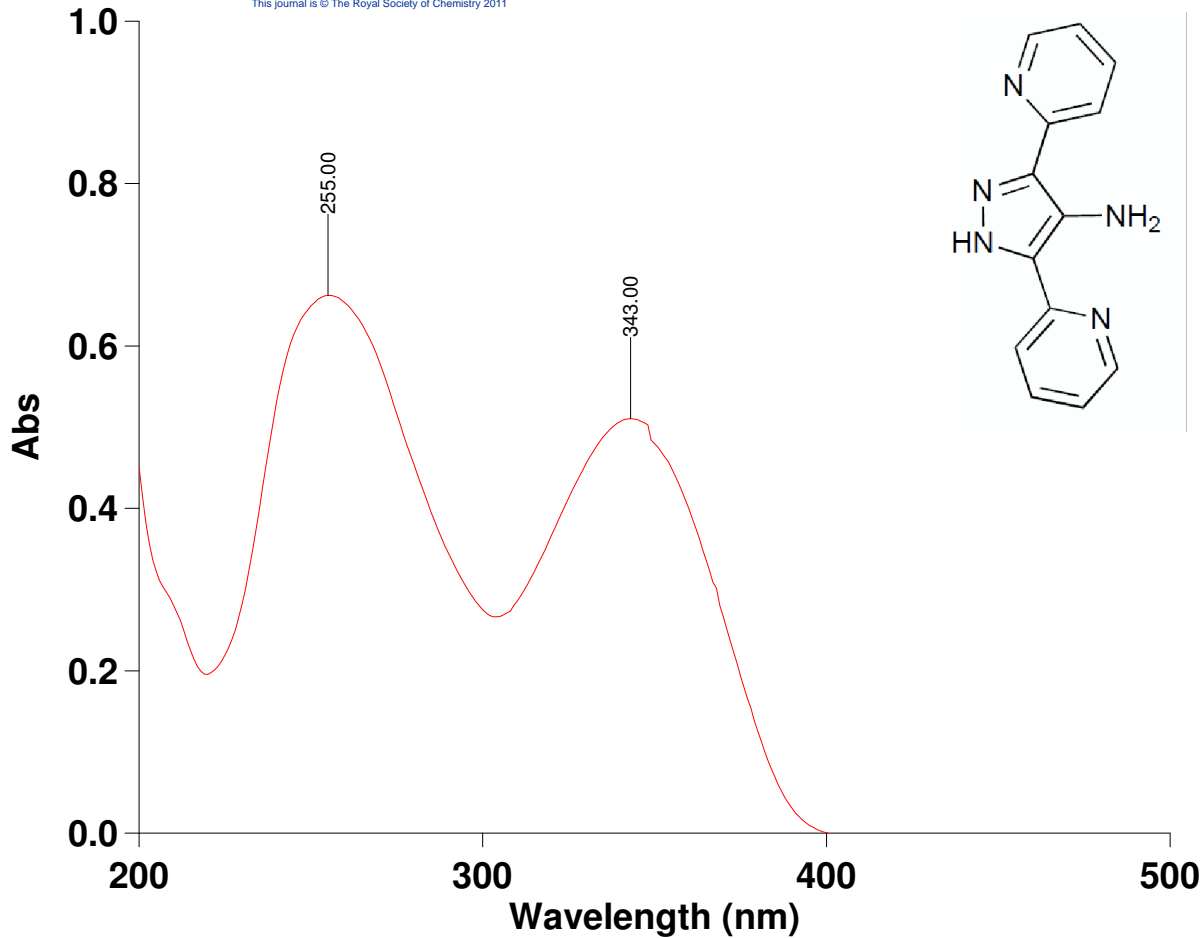
F2 - Acquisition Parameters
Date_ 20110615
Time 1.39
INSTRUM spect
PROBHD 5 mm CPQNP 1H/
PULPROG zgpg30
TD 65384
SOLVENT DMSO
NS 256
DS 8
SWH 27173.912 Hz
FIDRES 0.415605 Hz
AQ 1.2031156 sec
RG 64
DW 18.400 usec
DE 65.72 usec
TE 300.0 K
D1 4.00000000 sec
D11 0.03000000 sec
TD0 1

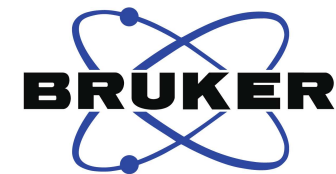
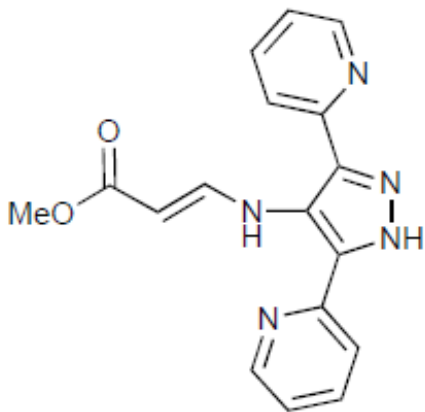
=====
CHANNEL f1
NUC1 13C
P1 10.00 usec
PL1 -0.30 dB
PL1W 39.29640961 W
SFO1 100.6263497 MHz

=====
CHANNEL f2
CPDPRG2 waltz16
NUC2 1H
PCPD2 80.00 usec
PL2 1.50 dB
PL12 18.16 dB
PL13 19.16 dB
PL2W 8.18008518 W
PL12W 0.17650534 W
PL13W 0.14020318 W
SFO2 400.1416006 MHz

F2 - Processing parameters
SI 65536
SF 100.6153236 MHz
WDW EM
SSB 0
LB 1.00 Hz
GB 0
PC 2.00





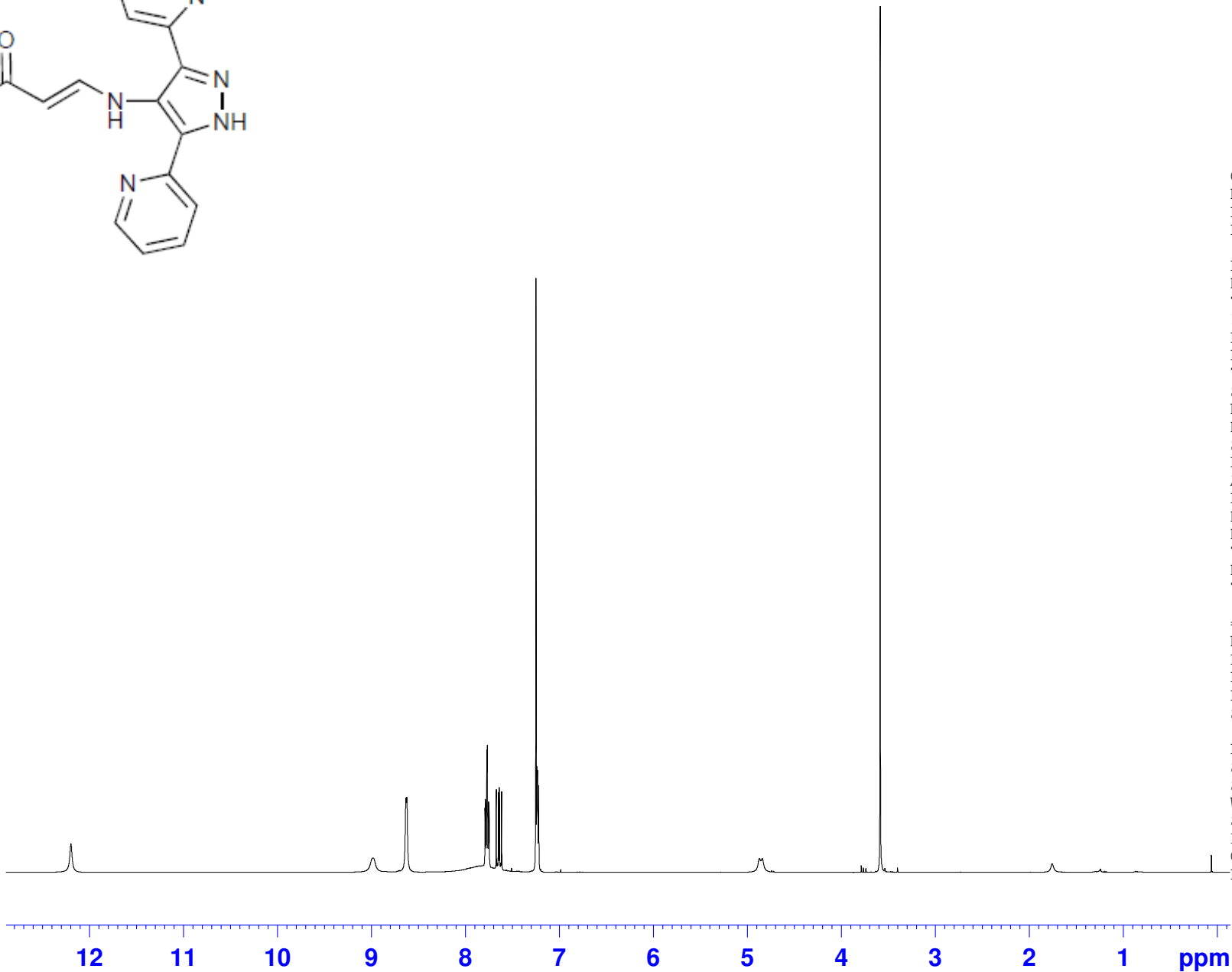


Current Data Parameters
NAME fjl-hs558-400MHz
EXPNO 10
PROCNO 1

F2 - Acquisition Parameters
Date_ 20110615
Time 11.02
INSTRUM spect
PROBHD 5 mm CPQNP 1H/
PULPROG zg30
TD 65536
SOLVENT CDC13
NS 16
DS 2
SWH 11160.714 Hz
FIDRES 0.170299 Hz
AQ 2.9360628 sec
RG 32
DW 44.800 usec
DE 106.71 usec
TE 300.0 K
D1 1.00000000 sec
TD0 1

==== CHANNEL f1 =====
NUC1 1H
P1 11.75 usec
PL1 1.50 dB
PL1W 8.18008518 W
SFO1 400.1428010 MHz

F2 - Processing parameters
SI 65536
SF 400.1400175 MHz
WDW EM
SSB 0
LB 0.30 Hz
GB 0
PC 1.50



1.04

1.02

1.99

4.88

2.06

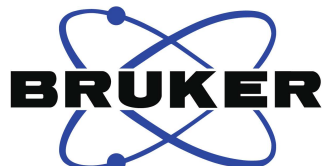
1.11

3.20

0.98

3.00

0.80



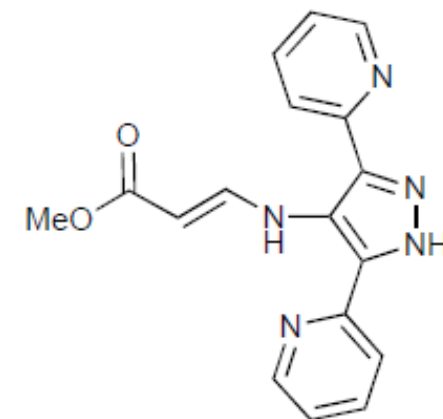
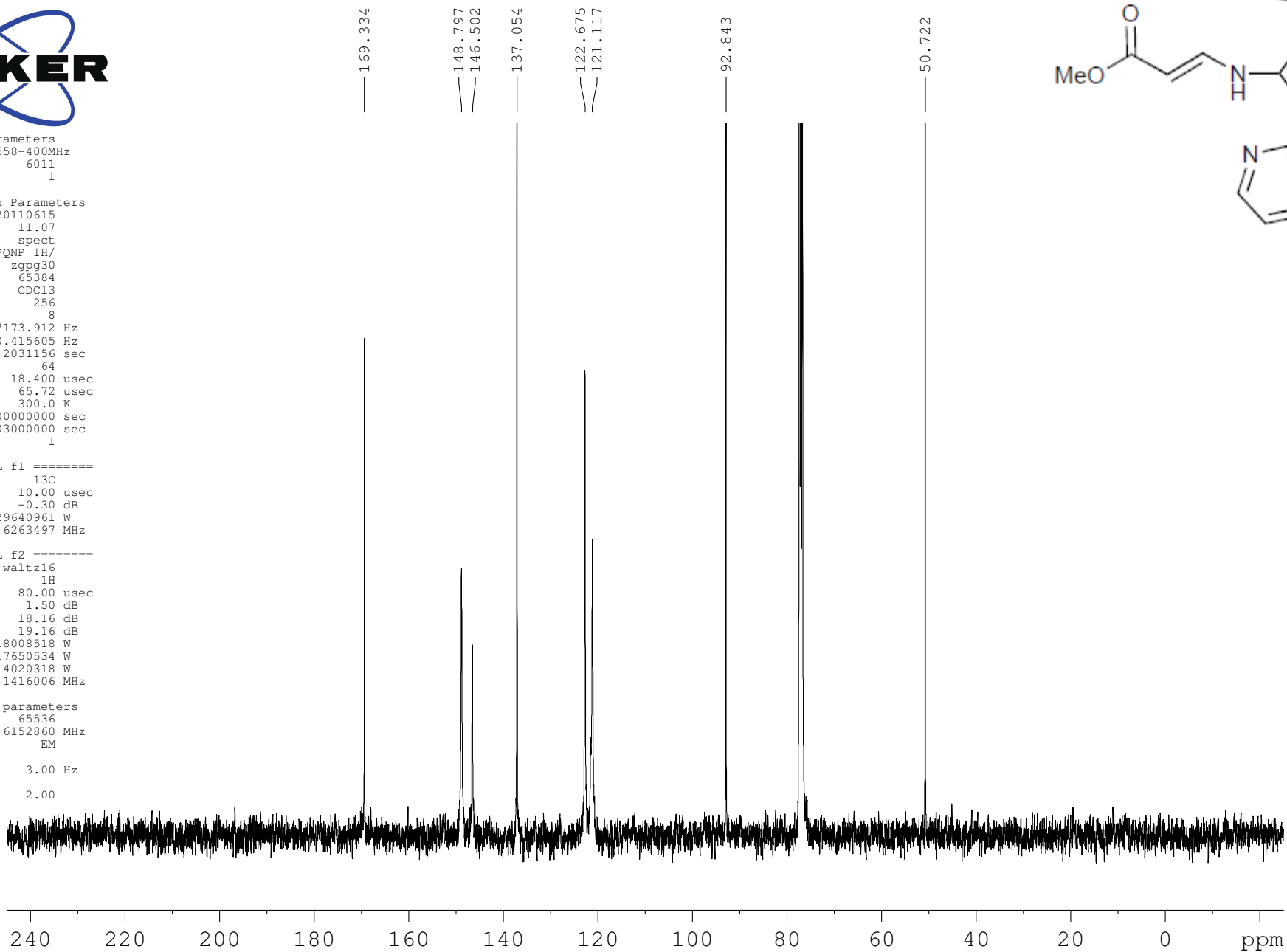
Current Data Parameters
NAME fjl-hs558-400MHz
EXPNO 6011
PROCNO 1

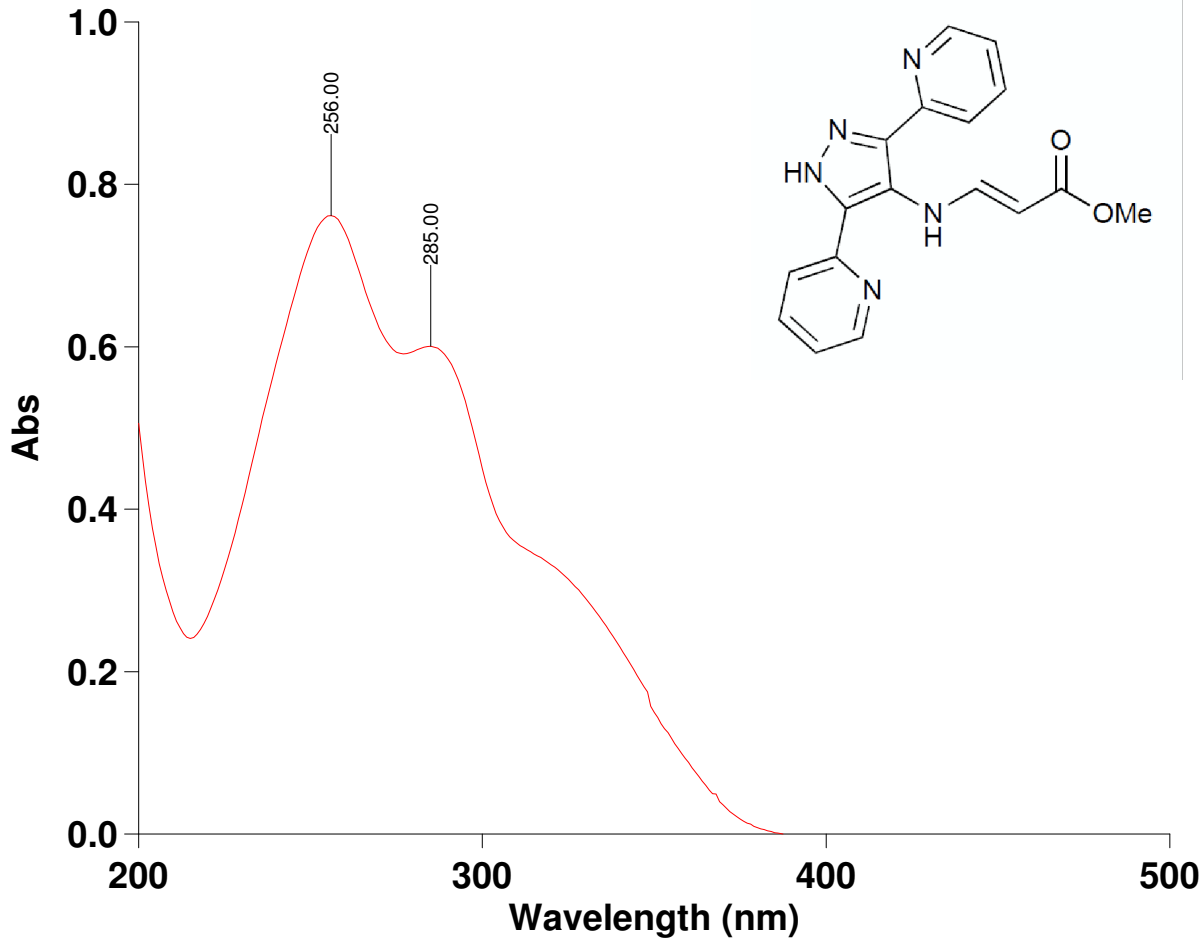
F2 - Acquisition Parameters
Date_ 20110615
Time 11.07
INSTRUM spect
PROBHD 5 mm CPQNP 1H/
PULPROG zgpg30
TD 65384
SOLVENT CDC13
NS 256
DS 8
SWH 27173.912 Hz
FIDRES 0.415605 Hz
AQ 1.2031156 sec
RG 64
DW 18.400 usec
DE 65.72 usec
TE 300.0 K
D1 4.00000000 sec
D11 0.03000000 sec
TD0 1

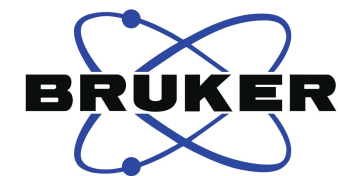
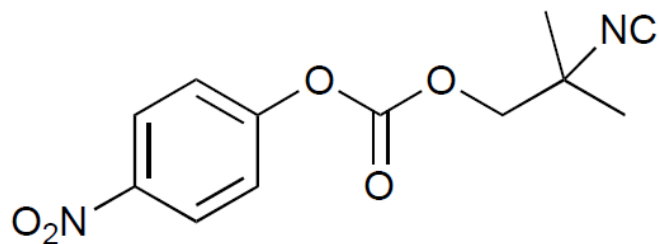
=====
CHANNEL f1
NUC1 13C
P1 10.00 usec
PL1 -0.30 dB
PL1W 39.29640961 W
SFO1 100.6263497 MHz

=====
CHANNEL f2
CPDPRG2 waltz16
NUC2 1H
PCPD2 80.00 usec
PL2 1.50 dB
PL12 18.16 dB
PL13 19.16 dB
PL2W 8.18008518 W
PL12W 0.17650534 W
PL13W 0.14020318 W
SFO2 400.1416006 MHz

F2 - Processing parameters
SI 65536
SF 100.6152860 MHz
WDW EM
SSB 0
LB 3.00 Hz
GB 0
PC 2.00





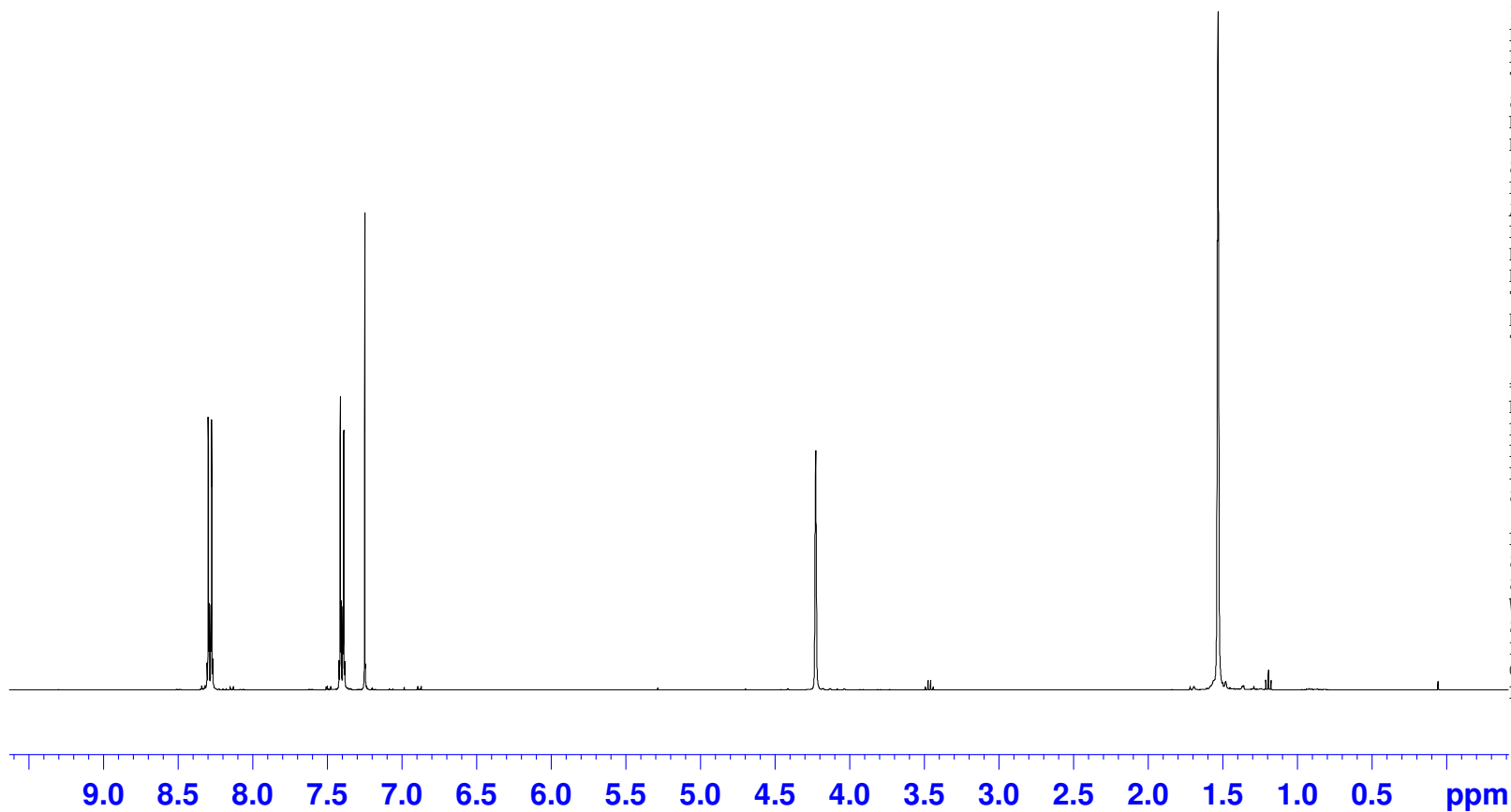


Current Data Parameters
NAME fjl-hs452
EXPNO 10
PROCNO 1

F2 - Acquisition Parameters
Date_ 20110620
Time 17.32
INSTRUM spect
PROBHD 5 mm CPQNP 1H/
PULPROG zg30
TD 65536
SOLVENT CDCl3
NS 16
DS 2
SWH 11160.714 Hz
FIDRES 0.170299 Hz
AQ 2.9360628 sec
RG 32
DW 44.800 usec
DE 106.71 usec
TE 300.0 K
D1 1.00000000 sec
TD0 1

===== CHANNEL f1 =====
NUC1 1H
P1 11.75 usec
PL1 1.50 dB
PL1W 8.18008518 W
SFO1 400.1428010 MHz

F2 - Processing parameters
SI 65536
SF 400.1400175 MHz
WDW EM
SSB 0
LB 0.30 Hz
GB 0
PC 1.50

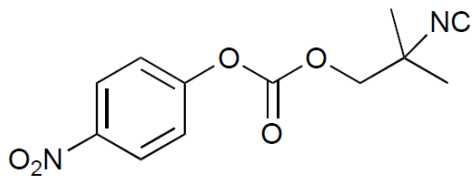


2.01

2.00

2.06

6.51



Current Data Parameters

NAME fjl-hs452
EXPNO 11
PROCNO 1

F2 - Acquisition Parameters

Date_ 20110620
Time 17.48
INSTRUM spect
PROBHD 5 mm CPQNP 1H/
PULPROG zgpg30
TD 65536
SOLVENT CDC13
NS 2048
DS 8
SWH 27173.912 Hz
FIDRES 0.414641 Hz
AQ 1.2059124 sec
RG 64
DW 18.400 usec
DE 65.72 usec
TE 300.0 K
D1 4.00000000 sec
D11 0.03000000 sec
TD0 1

==== CHANNEL f1 =====

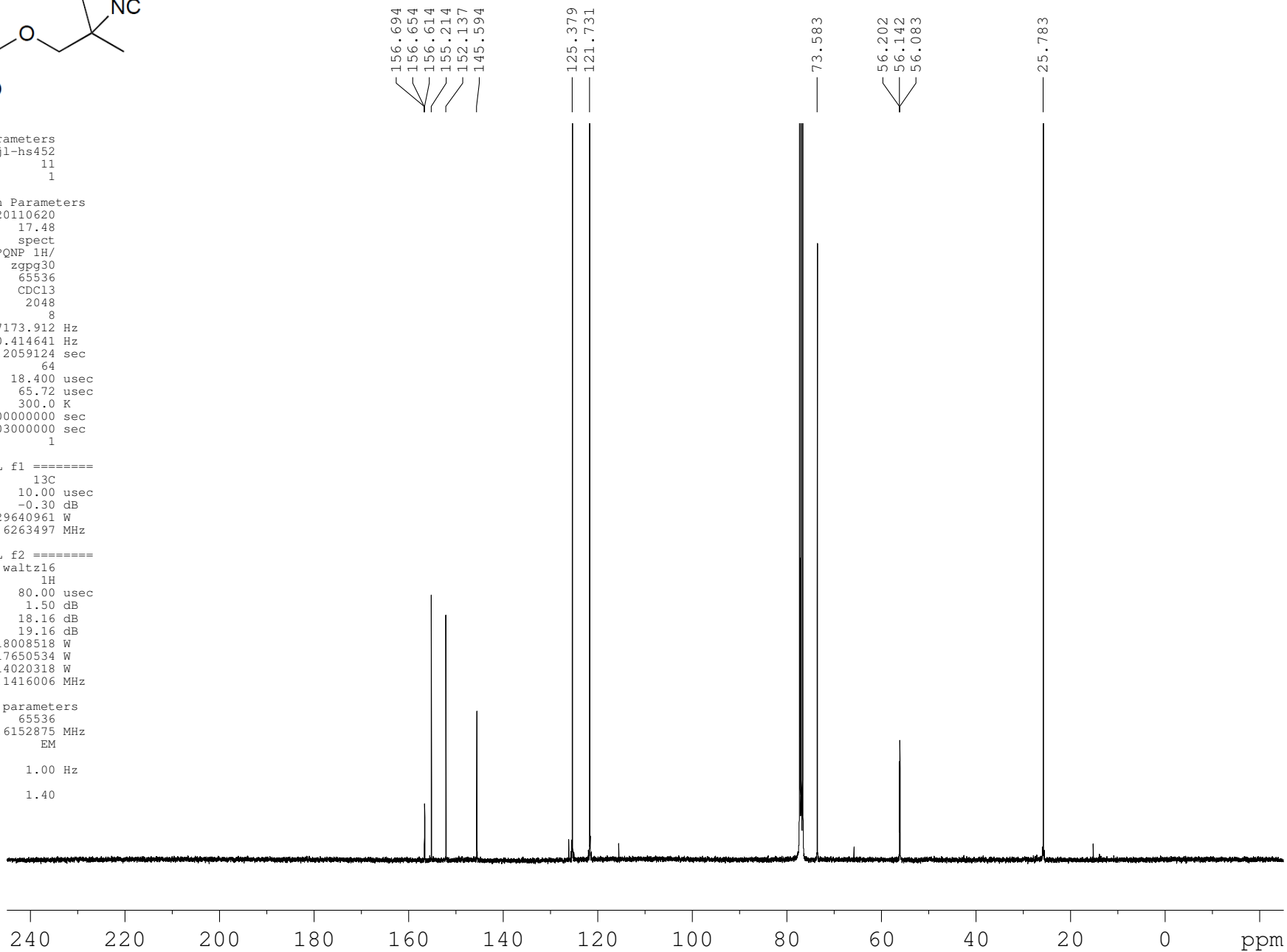
NUC1 13C
P1 10.00 usec
PL1 -0.30 dB
PL1W 39.29640961 W
SFO1 100.6263497 MHz

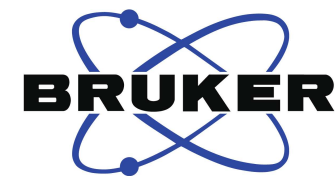
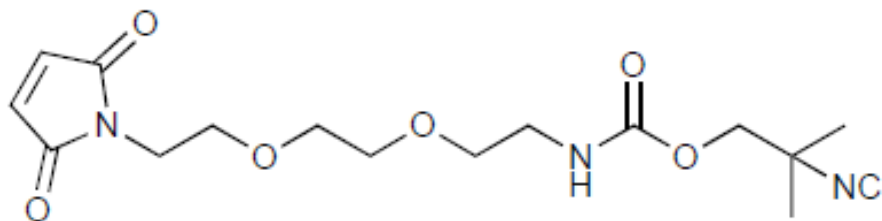
==== CHANNEL f2 =====

CPDPRG2 waltz16
NUC2 1H
PCPD2 80.00 usec
PL2 1.50 dB
PL12 18.16 dB
PL13 19.16 dB
PL2W 8.18008518 W
PL12W 0.17650534 W
PL13W 0.14020318 W
SFO2 400.1416006 MHz

F2 - Processing parameters

SI 65536
SF 100.6152875 MHz
WDW EM
SSB 0
LB 1.00 Hz
GB 0
PC 1.40



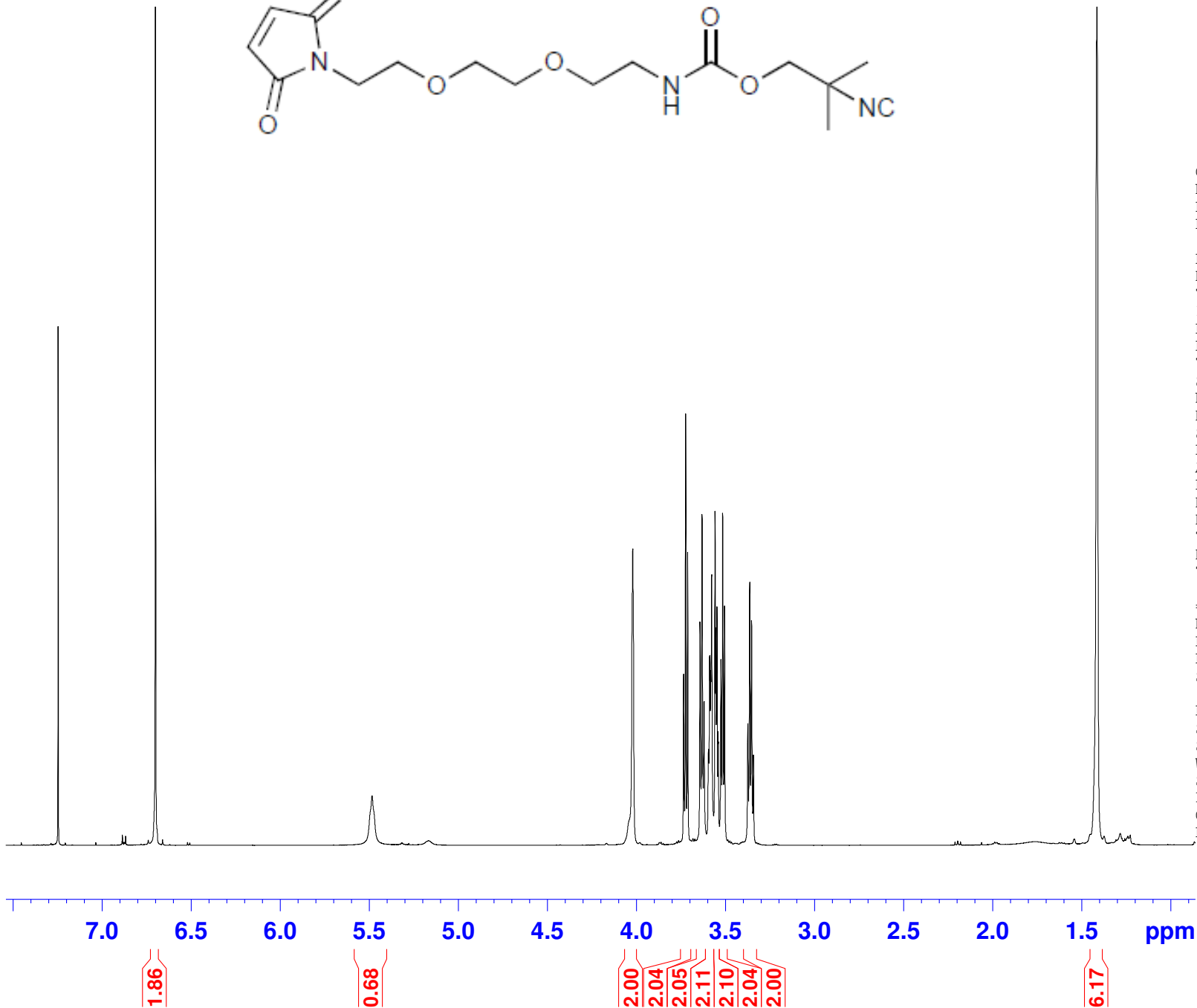


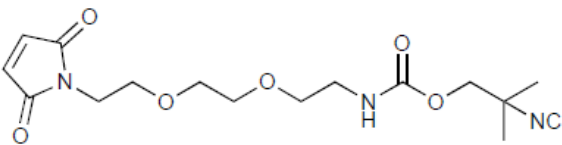
Current Data Parameters
NAME fjl-hs454
EXPNO 10
PROCNO 1

F2 - Acquisition Parameters
Date_ 20110323
Time 4.50
INSTRUM drx500
PROBHD 5 mm CPDUL Z-
PULPROG zg30
TD 65536
SOLVENT CDCl3
NS 16
DS 0
SWH 8503.401 Hz
FIDRES 0.129752 Hz
AQ 3.8535669 sec
RG 11.3
DW 58.800 usec
DE 6.00 usec
TE 300.0 K
D1 2.00000000 sec
TD0 1

===== CHANNEL f1 =====
NUC1 1H
P1 14.75 usec
PL1 -6.00 dB
SFO1 500.0532723 MHz

F2 - Processing parameters
SI 65536
SF 500.0500219 MHz
WDW EM
SSB 0
LB 0.10 Hz
GB 0
PC 1.00





155.155.155.155.155.058
155.024

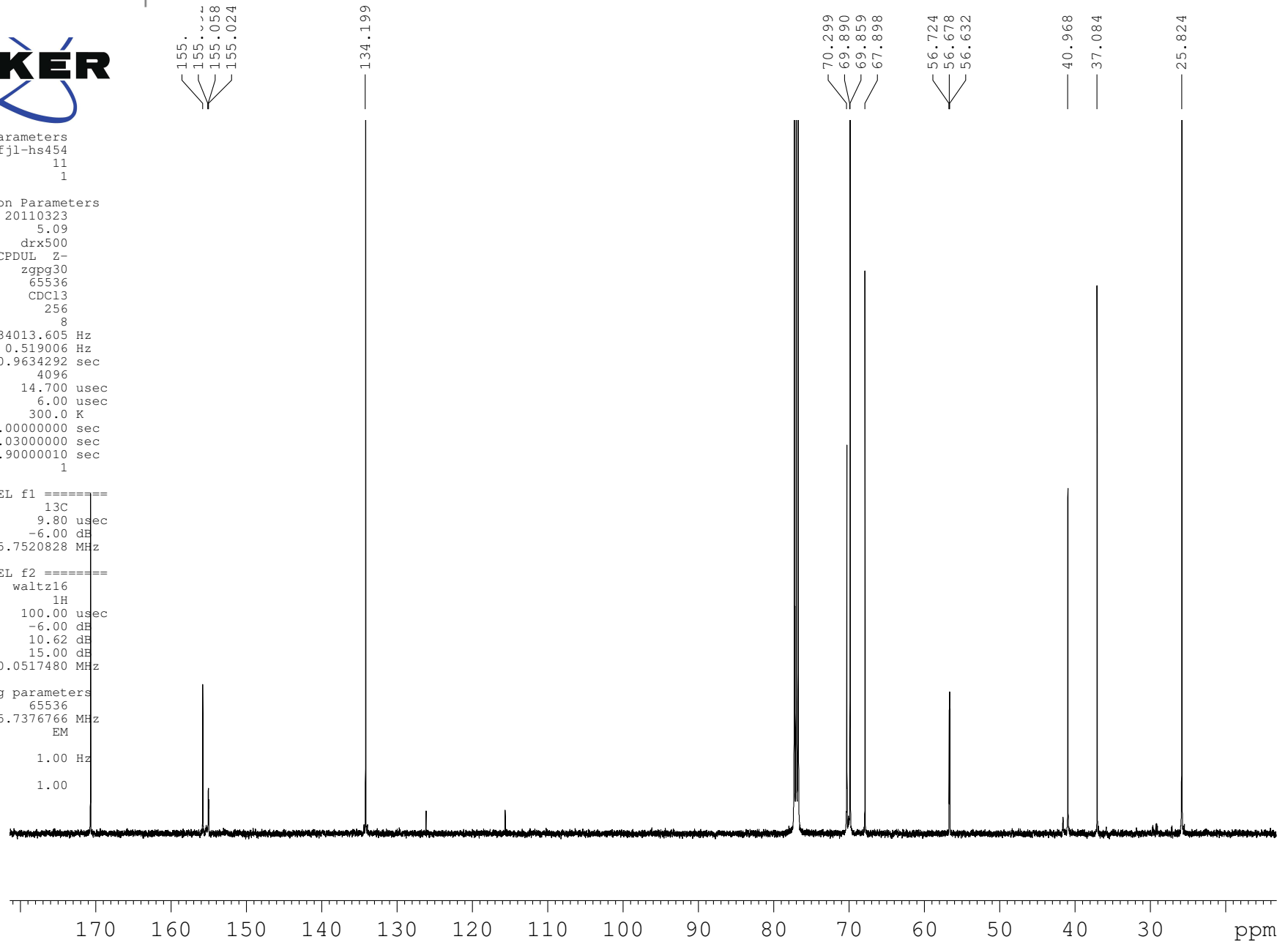
Current Data Parameters
NAME fjl-hs454
EXPNO 11
PROCNO 1

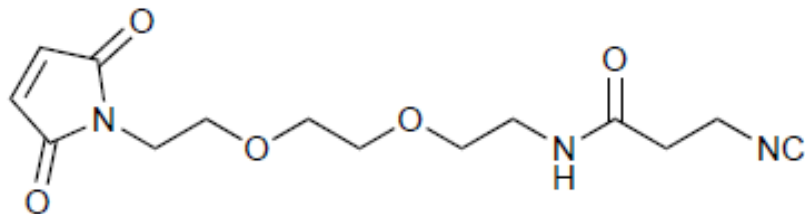
F2 - Acquisition Parameters
Date_ 20110323
Time 5.09
INSTRUM drx500
PROBHD 5 mm CPDUL Z-
PULPROG zgpg30
TD 65536
SOLVENT CDCl3
NS 256
DS 8
SWH 34013.605 Hz
FIDRES 0.519006 Hz
AQ 0.9634292 sec
RG 4096
DW 14.700 usec
DE 6.00 usec
TE 300.0 K
D1 3.0000000 sec
d11 0.0300000 sec
DELTA 2.9000010 sec
TD0 1

==== CHANNEL f1 =====
NUC1 13C
P1 9.80 usec
PL1 -6.00 dB
SFO1 125.7520828 MHz

==== CHANNEL f2 =====
CPDPRG2 waltz16
NUC2 1H
PCPD2 100.00 usec
PL2 -6.00 dB
PL12 10.62 dB
PL13 15.00 dB
SFO2 500.0517480 MHz

F2 - Processing parameters
SI 65536
SF 125.7376766 MHz
WDW EM
SSB 0
LB 1.00 Hz
GB 0
PC 1.00



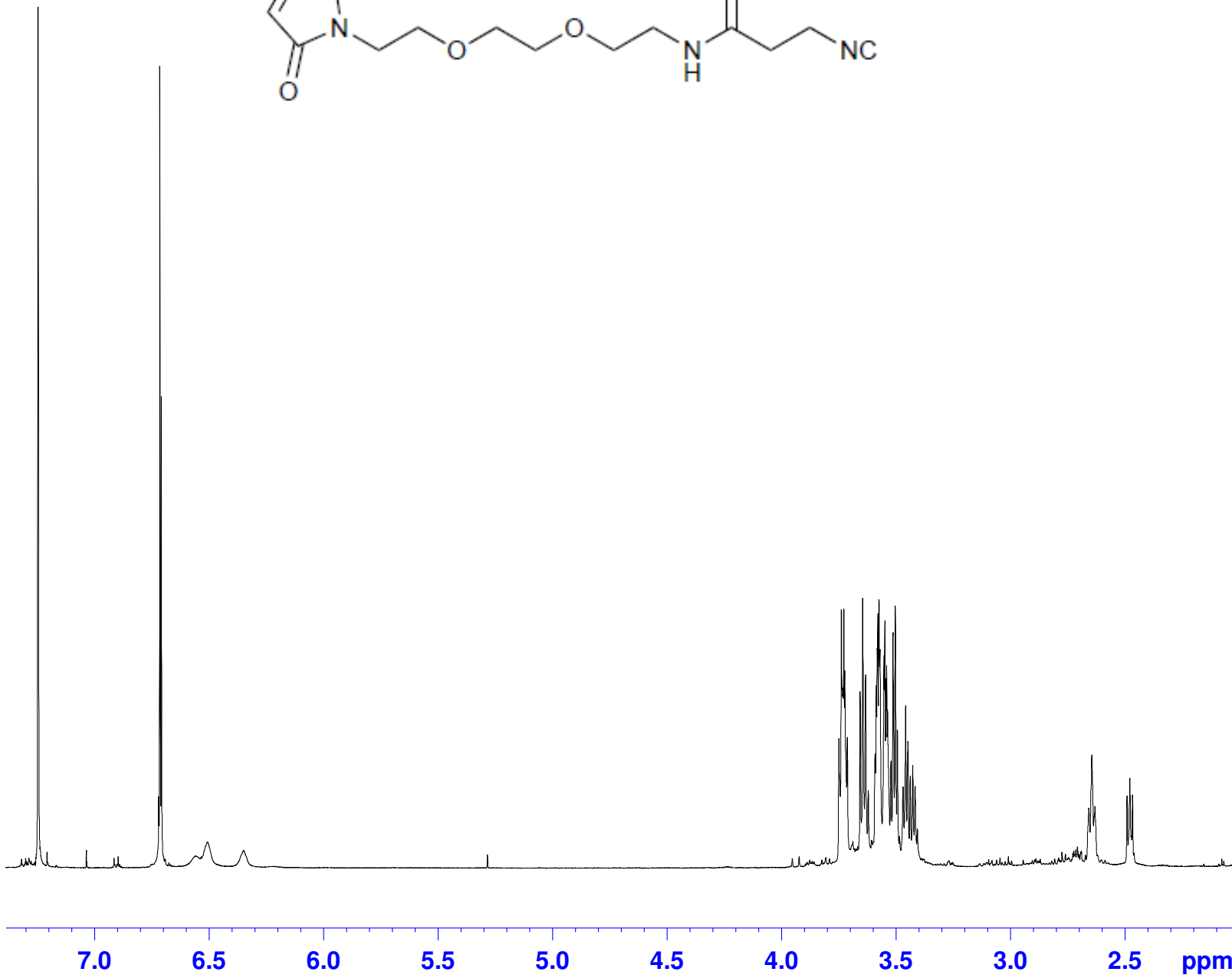


Current Data Parameters
NAME fjl-hs568
EXPNO 10
PROCNO 1

F2 - Acquisition Parameters
Date_ 20110613
Time 13.45
INSTRUM drx500
PROBHD 5 mm CPDUL Z-
PULPROG zg30
TD 65536
SOLVENT CDCl3
NS 16
DS 0
SWH 8503.401 Hz
FIDRES 0.129752 Hz
AQ 3.8535669 sec
RG 11.3
DW 58.800 usec
DE 6.00 usec
TE 298.0 K
D1 2.00000000 sec
TD0 1

===== CHANNEL f1 =====
NUC1 1H
P1 14.75 usec
PL1 -6.00 dB
SFO1 500.0532723 MHz

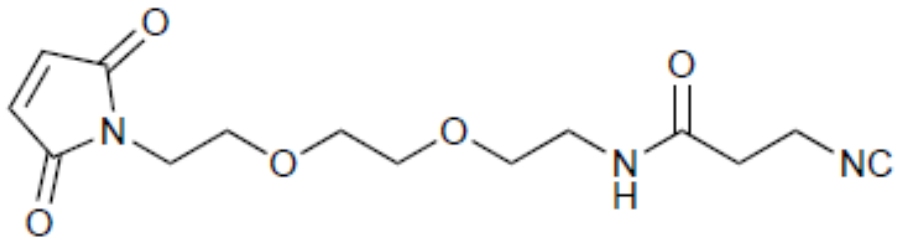
F2 - Processing parameters
SI 65536
SF 500.0500219 MHz
WDW EM
SSB 0
LB 0.10 Hz
GB 0
PC 1.00



2.00
1.09

3.07
1.89
2.94
2.46
2.30
2.38

2.06



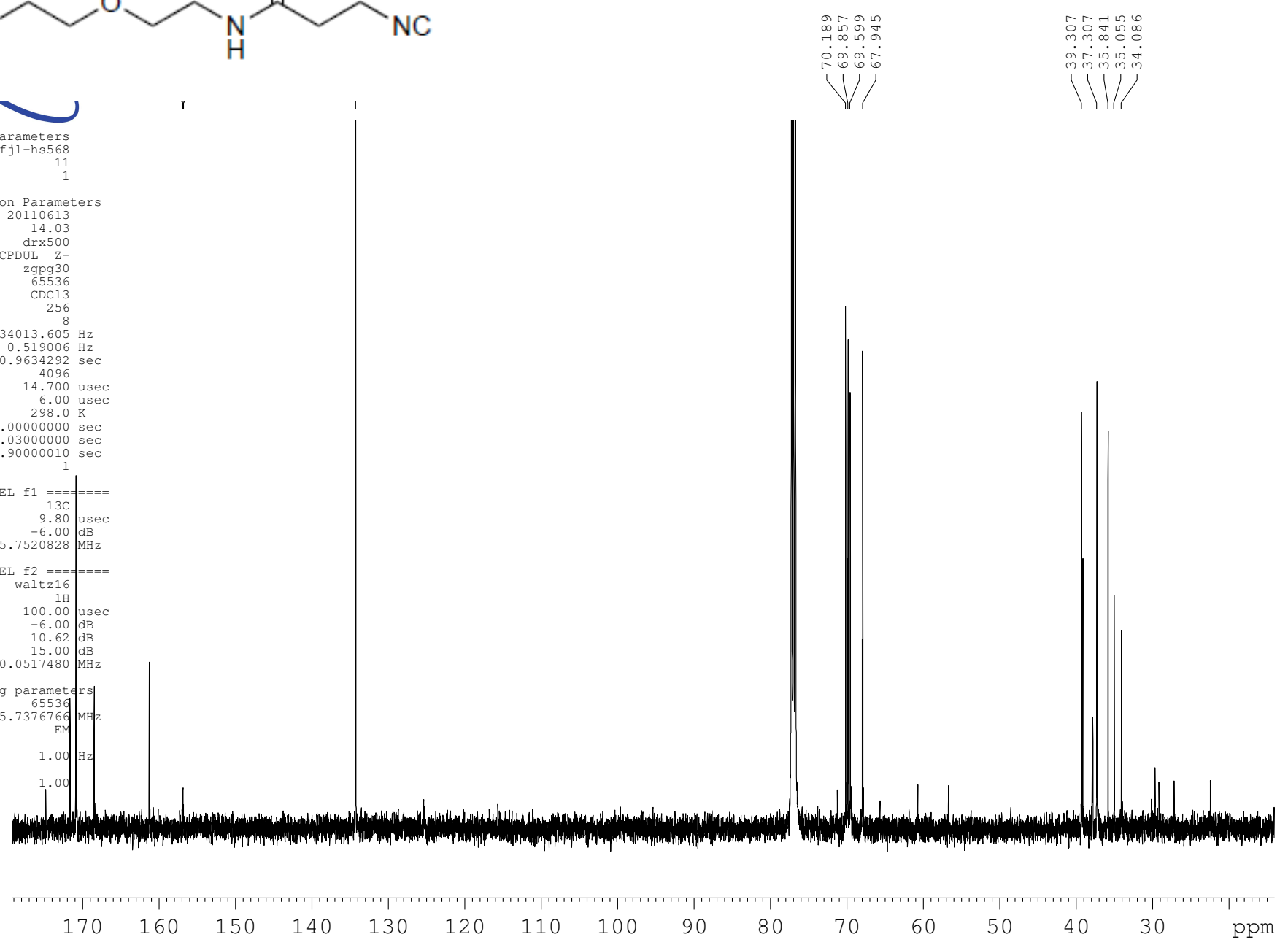
Current Data Parameters
 NAME fjl-hs568
 EXPNO 11
 PROCNO 1

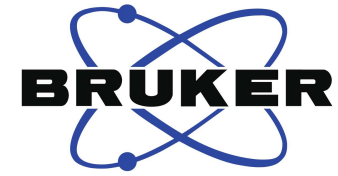
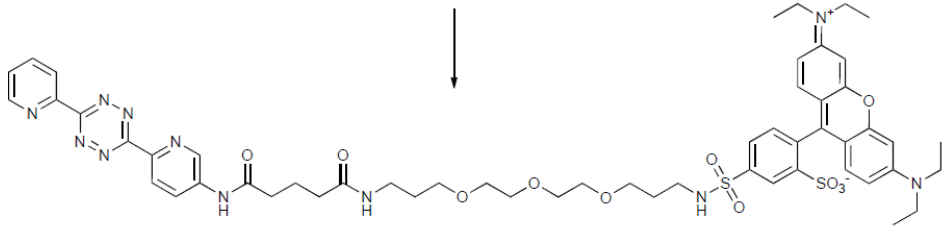
F2 - Acquisition Parameters
 Date_ 20110613
 Time 14.03
 INSTRUM drx500
 PROBHD 5 mm CPDUL Z-
 PULPROG zgpg30
 TD 65536
 SOLVENT CDCl3
 NS 256
 DS 8
 SWH 34013.605 Hz
 FIDRES 0.519006 Hz
 AQ 0.9634292 sec
 RG 4096
 DW 14.700 usec
 DE 6.00 usec
 TE 298.0 K
 D1 3.0000000 sec
 d11 0.0300000 sec
 DELTA 2.9000010 sec
 TD0 1

==== CHANNEL f1 =====
 NUC1 13C
 P1 9.80 usec
 PL1 -6.00 dB
 SFO1 125.7520828 MHz

==== CHANNEL f2 =====
 CPDPRG2 waltz16
 NUC2 1H
 PCPD2 100.00 usec
 PL2 -6.00 dB
 PL12 10.62 dB
 PL13 15.00 dB
 SFO2 500.0517480 MHz

F2 - Processing parameters
 SI 65536
 SF 125.7376766 MHz
 WDW EM
 SSB 0
 LB 1.00 Hz
 GB 0
 PC 1.00



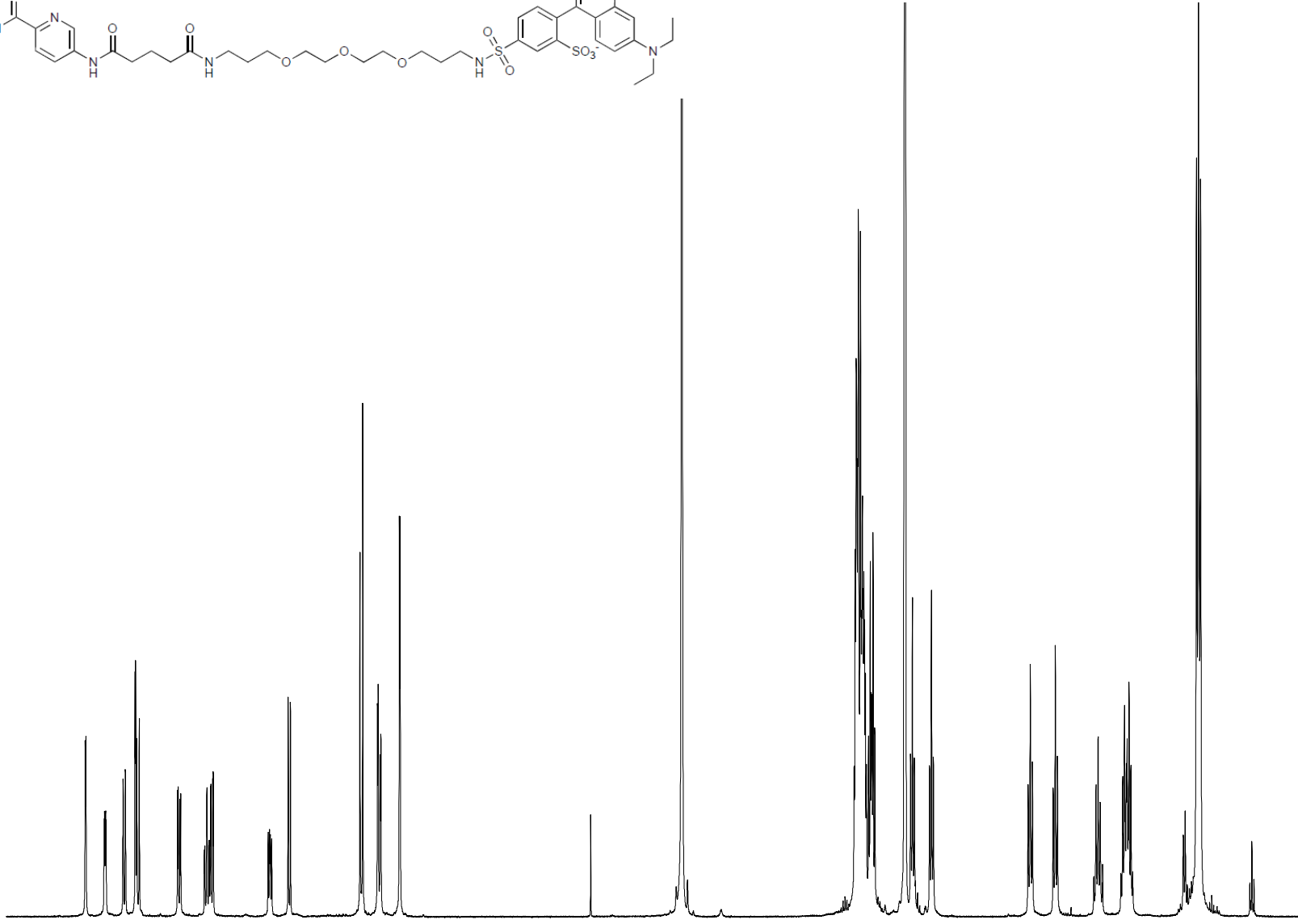


Current Data Parameters
 NAME fjl-hs451
 EXPNO 10
 PROCNO 1

F2 - Acquisition Parameters
 Date_ 20101117
 Time 18.50
 INSTRUM drx500
 PROBHD 5 mm CPDUL Z-
 PULPROG zg30
 TD 65536
 SOLVENT MeOD
 NS 16
 DS 0
 SWH 8503.401 Hz
 FIDRES 0.129752 Hz
 AQ 3.8535669 sec
 RG 11.3
 DW 58.800 usec
 DE 6.00 usec
 TE 300.0 K
 D1 2.00000000 sec
 TD0 1

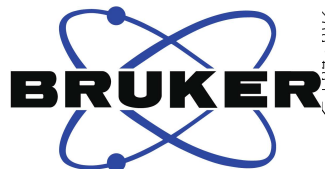
==== CHANNEL f1 =====
 NUC1 1H
 P1 14.75 usec
 PL1 -6.00 dB
 SFO1 500.0532723 MHz

F2 - Processing parameters
 SI 65536
 SF 500.0500191 MHz
 WDW EM
 SSB 0
 LB 0.10 Hz
 GB 0
 PC 1.00



9.0 8.5 8.0 7.5 7.0 6.5 6.0 5.5 5.0 4.5 4.0 3.5 3.0 2.5 2.0 1.5 ppm

0.97 0.99 1.00 2.00 1.03 2.01 0.99 0.98 2.02 2.03 1.97 16.65 4.37 2.21 2.02 1.97 1.97 2.08 4.19 12.43



164.442
164.442
159.209
157.747
157.083
151.525
151.239
147.233
145.105
143.978
142.614
140.343
139.524
135.325
133.658
132.558
129.365
128.236
128.143
127.653
126.116
125.578
115.235
115.041

96.965

71.581
71.552
71.253
69.955
69.380

46.825

41.669

37.912

37.003

36.212

30.884

30.329

22.693

12.875

Current Data Parameters
NAME fjl-hs451
EXPNO 11
PROCNO 1

F2 - Acquisition Parameters
Date_ 20101117
Time 20.00
INSTRUM drx500
PROBHD 5 mm CPDUL Z-
PULPROG zgpg30
TD 65536
SOLVENT MeOD
NS 1024
DS 8
SWH 34013.605 Hz
FIDRES 0.519006 Hz
AQ 0.9634292 sec
RG 4096
DW 14.700 usec
DE 6.00 usec
TE 300.0 K
D1 3.00000000 sec
d11 0.03000000 sec
DELTA 2.90000010 sec
TD0 1

==== CHANNEL f1 =====
NUC1 13C
P1 9.80 usec
PL1 -6.00 dB
SFO1 125.7520828 MHz

==== CHANNEL f2 =====
CPDPRG2 waltz16
NUC2 1H
PCPD2 100.00 usec
PL2 -6.00 dB
PL12 10.62 dB
PL13 12.00 dB
SFO2 500.0517480 MHz

F2 - Processing parameters
SI 65536
SF 125.7374977 MHz
WDW EM
SSB 0
LB 1.00 Hz
GB 0
PC 1.00

