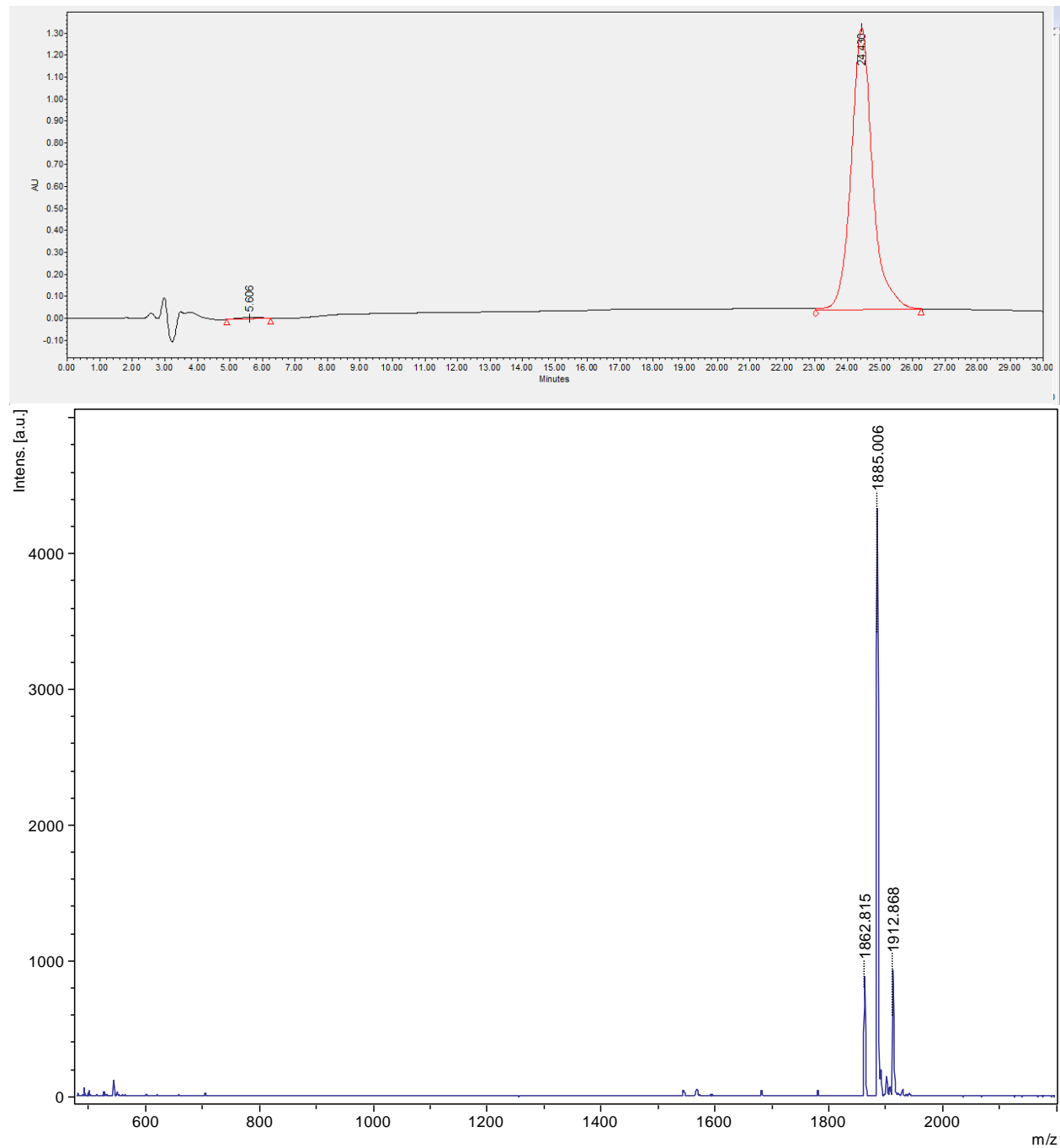


HPLC and MALDI data for peptoids

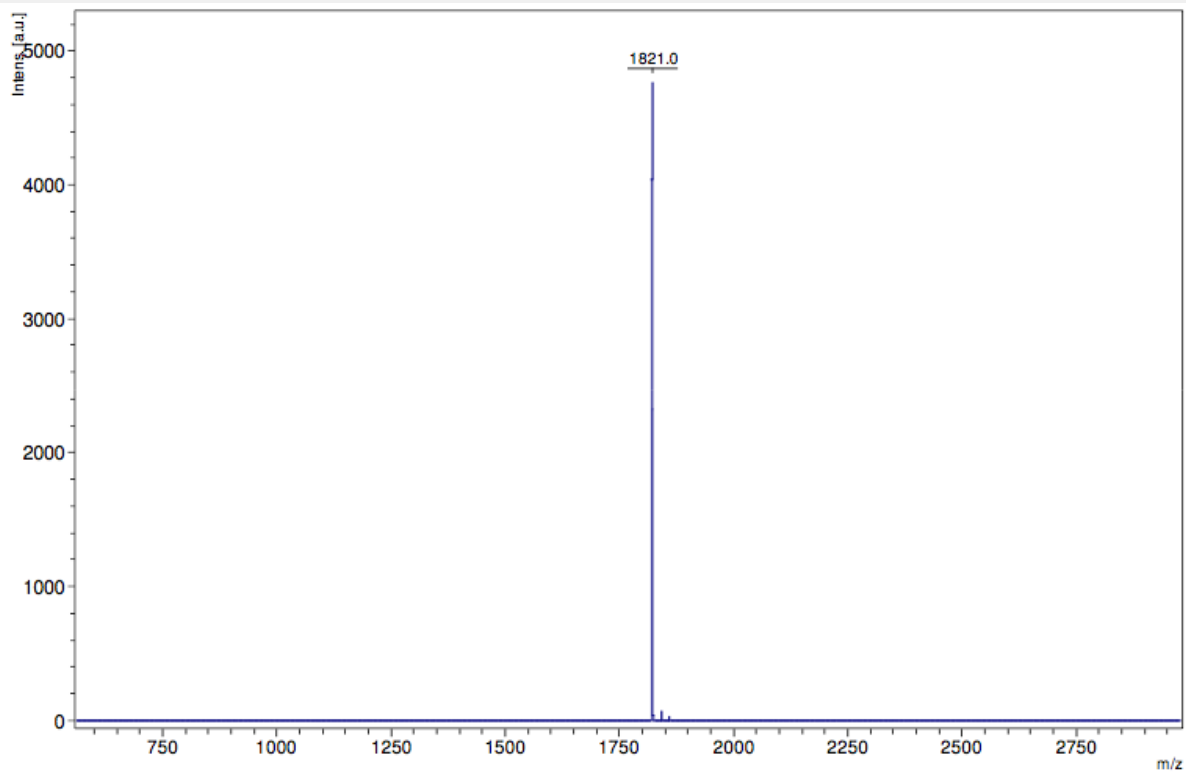
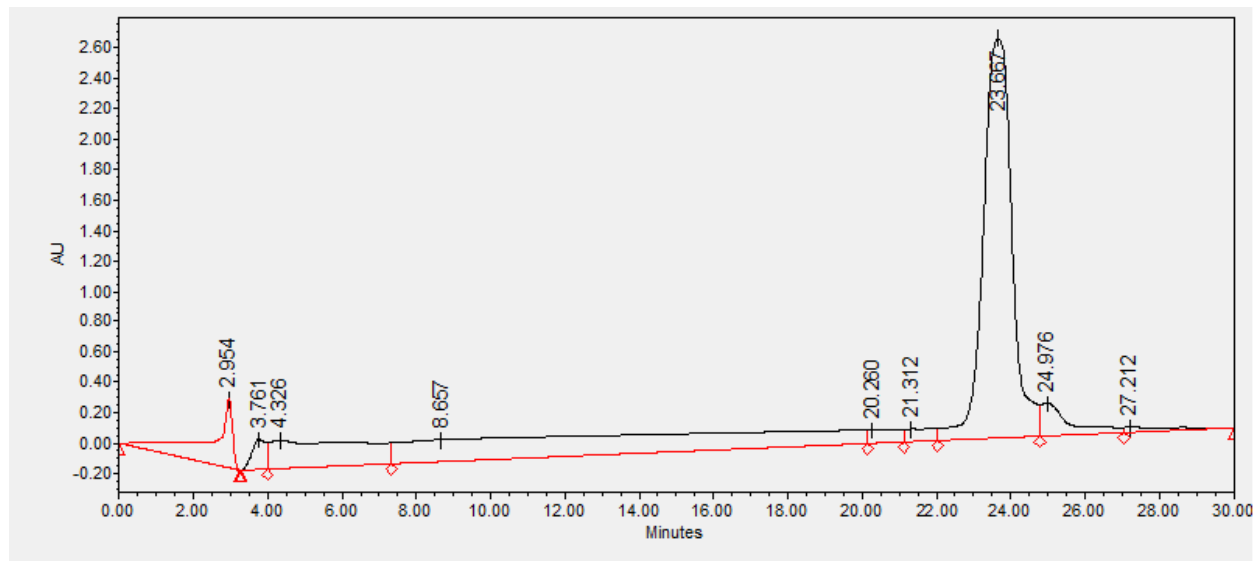
All HPLC traces were obtained using a reversed-phased analytical HPLC (Waters Alliance, Milford, MA) with a Duragel G C18 150 x 2.1 mm column (Peeke Scientific, Novato, CA) and a linear gradient of 5 to 95% solvent B (acetonitrile, 0.1% TFA) in solvent A (water, 0.1% TFA) over 30 min.

Mass spectrometry data was obtained by matrix-assisted laser desorption/ionization.

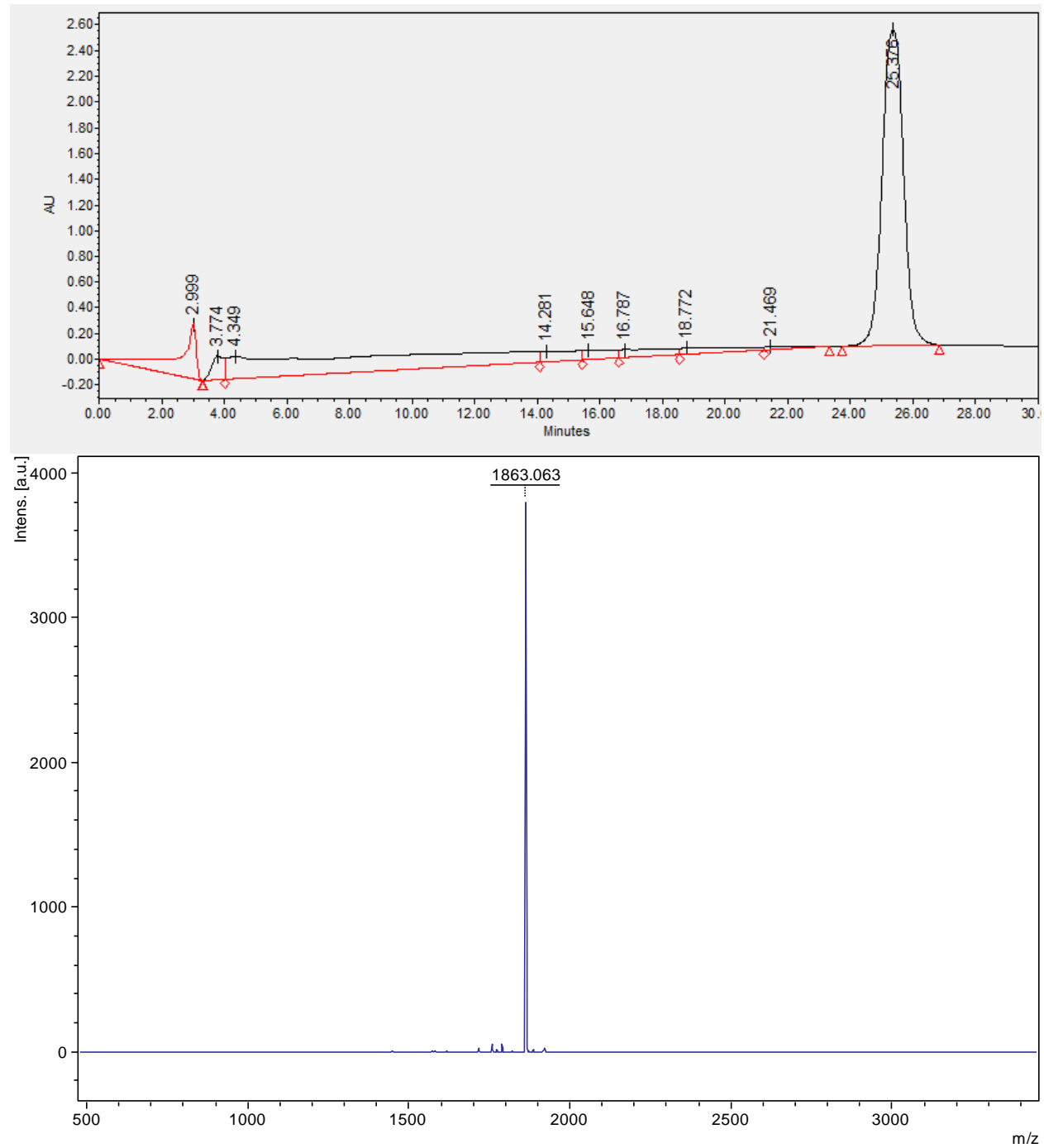
P1



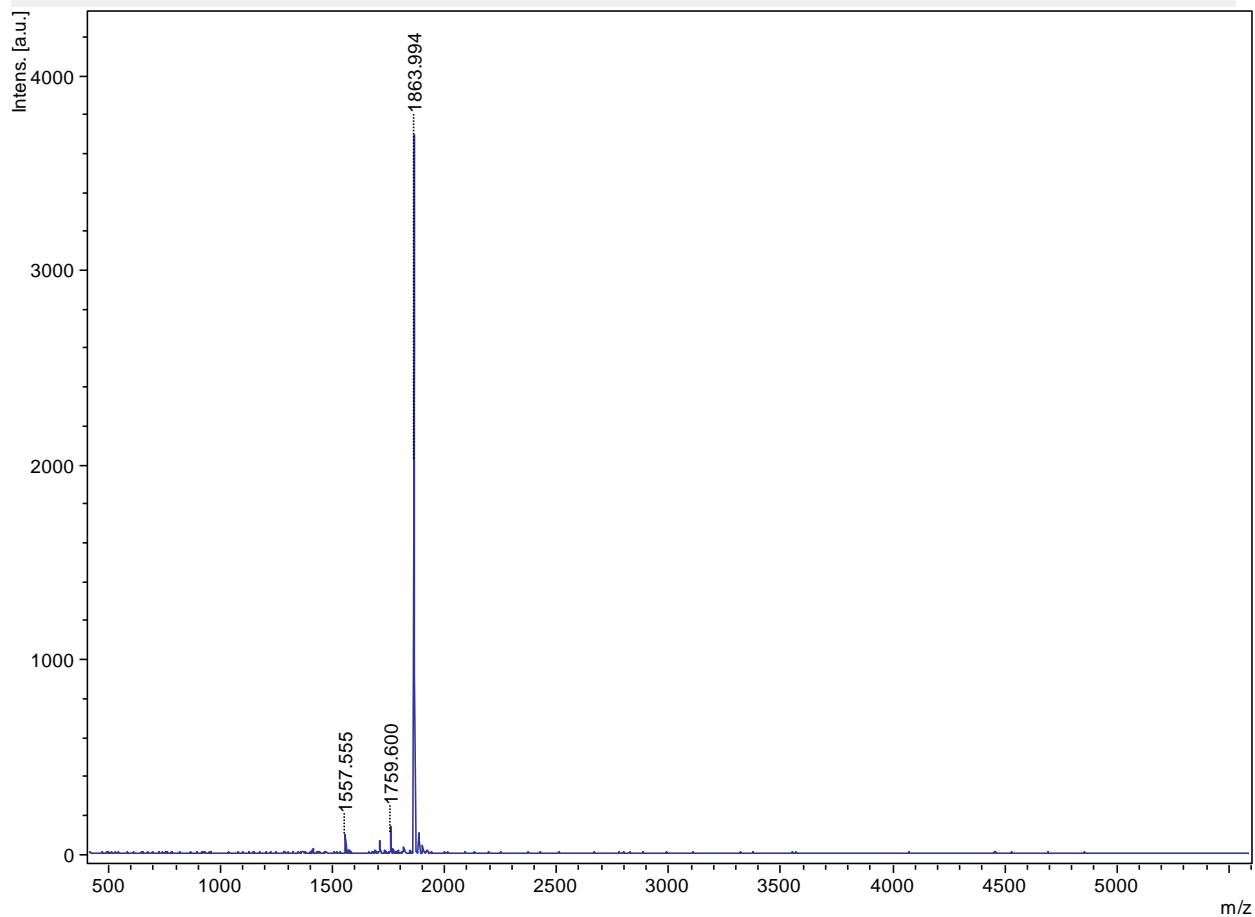
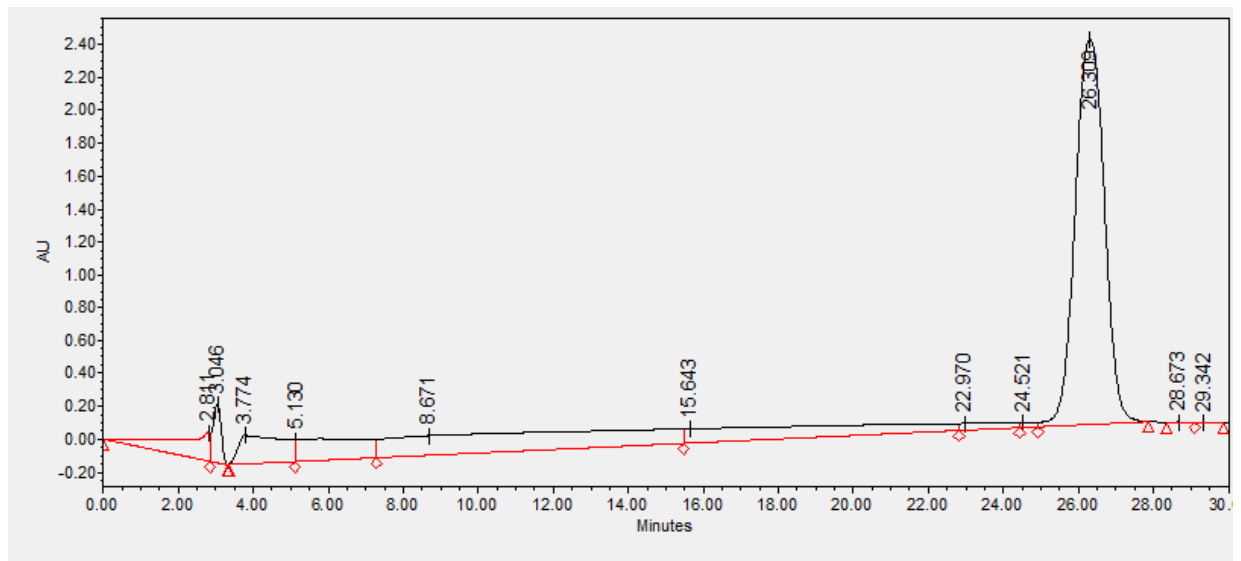
WP1



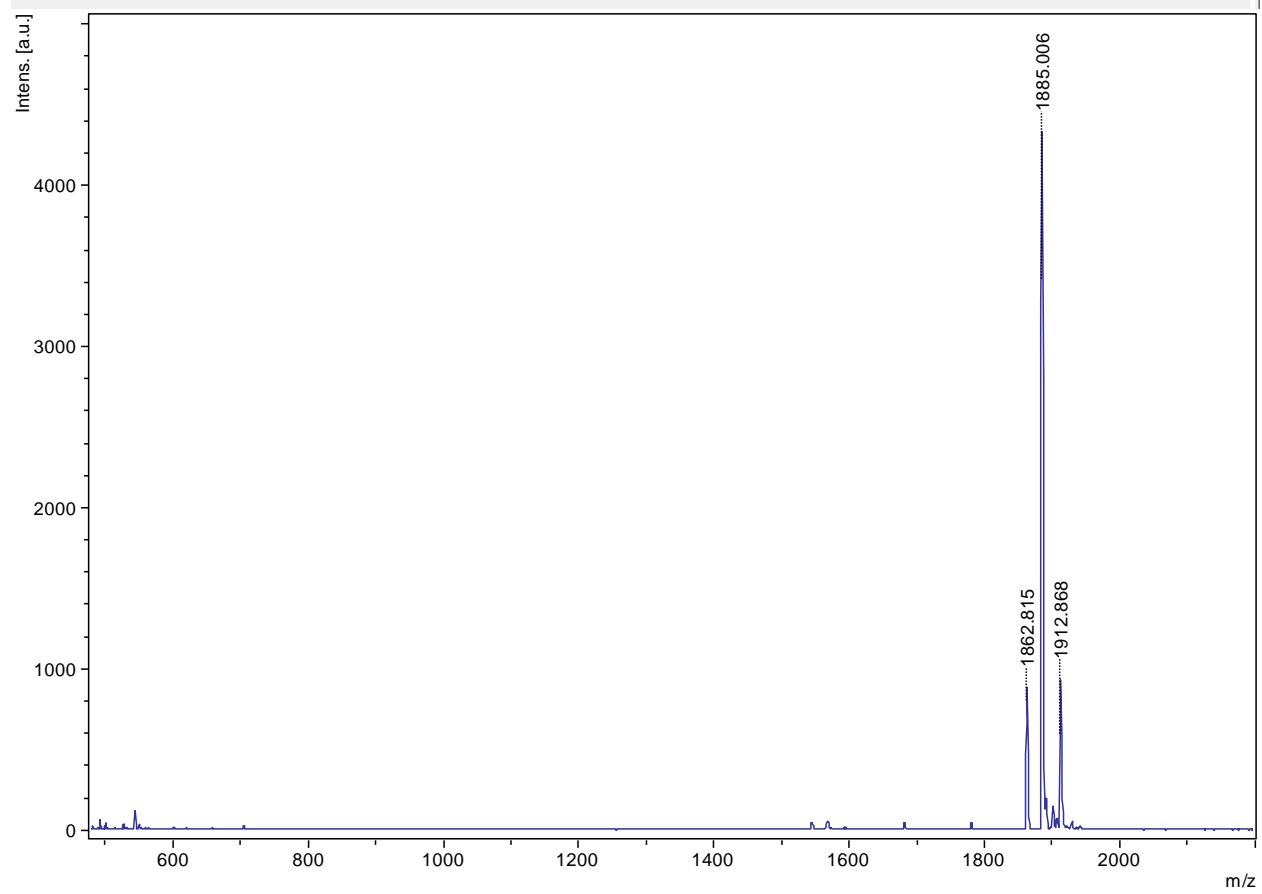
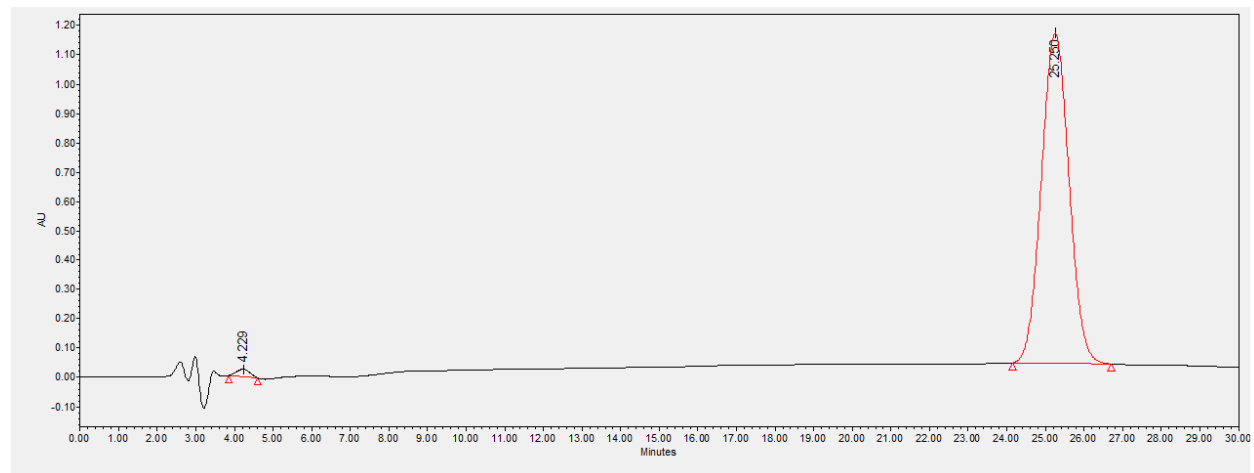
rP1



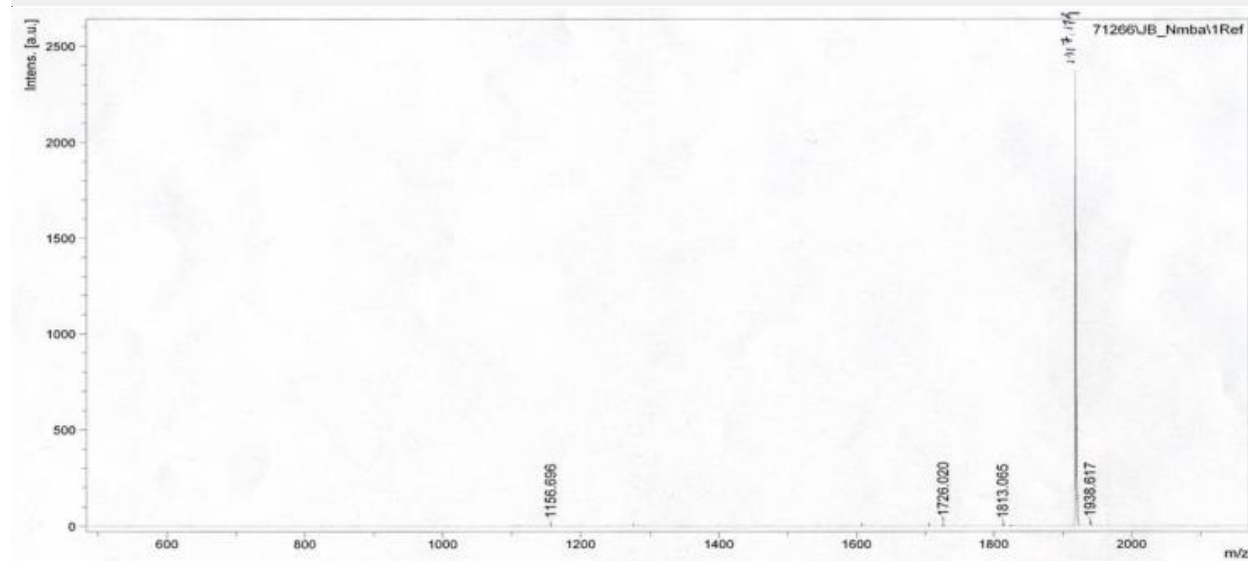
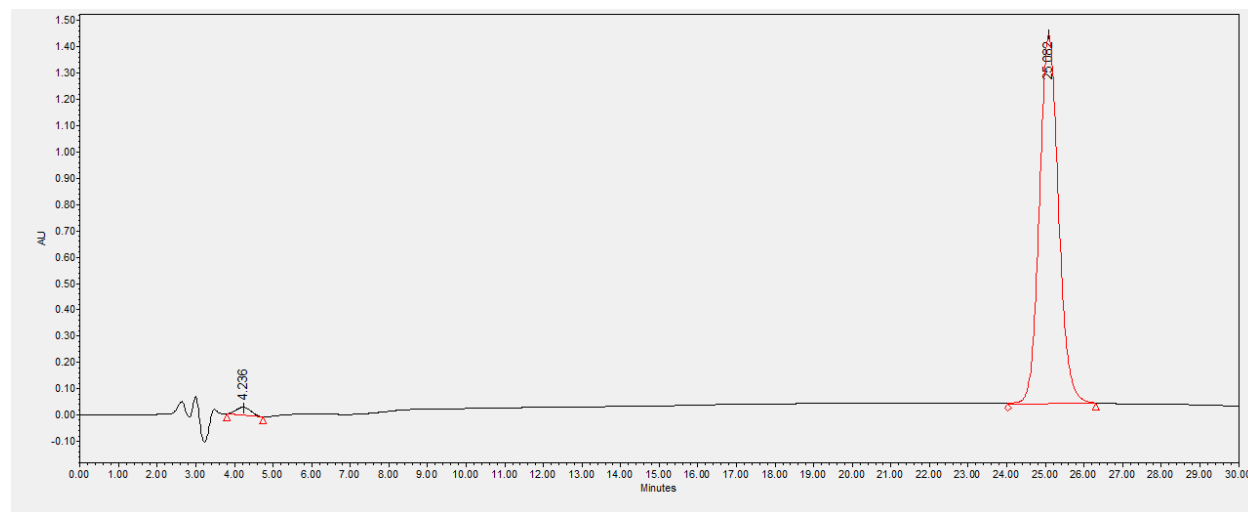
P2



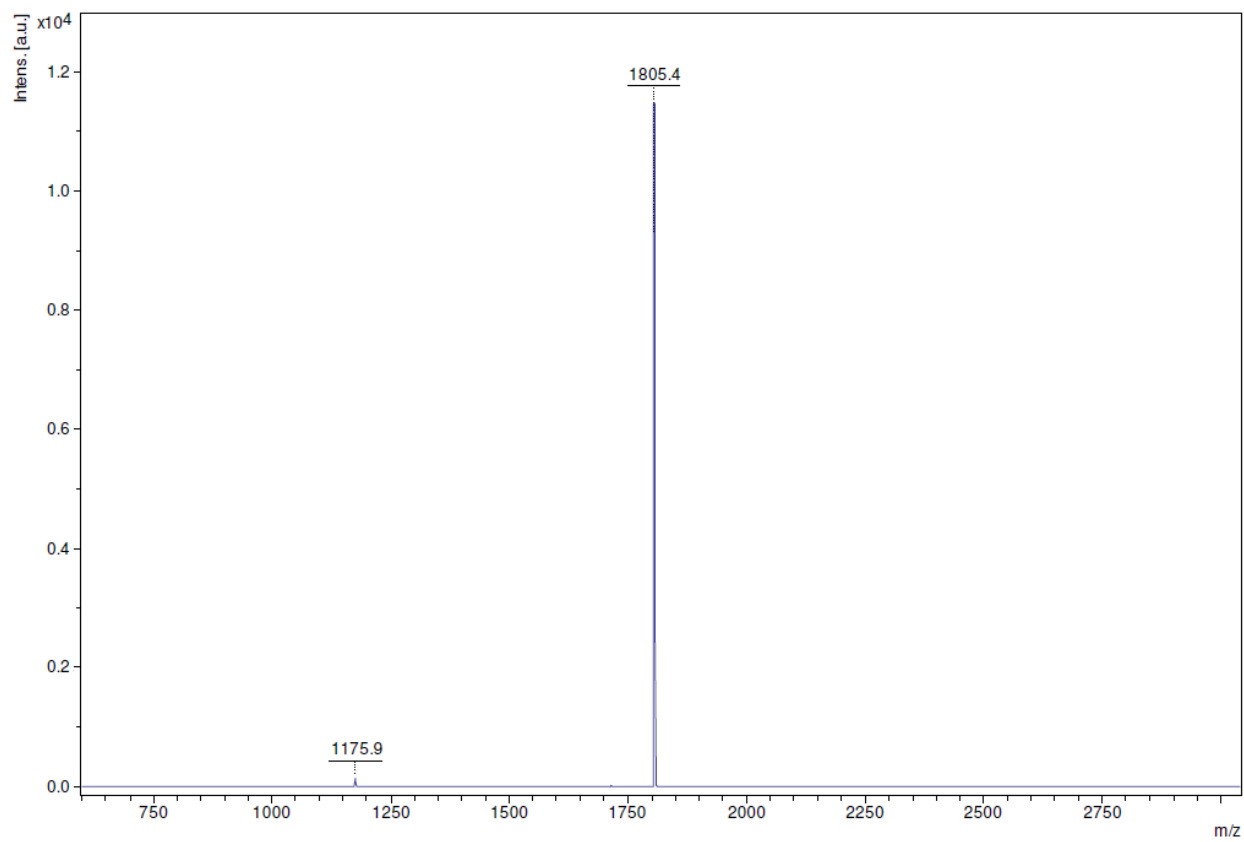
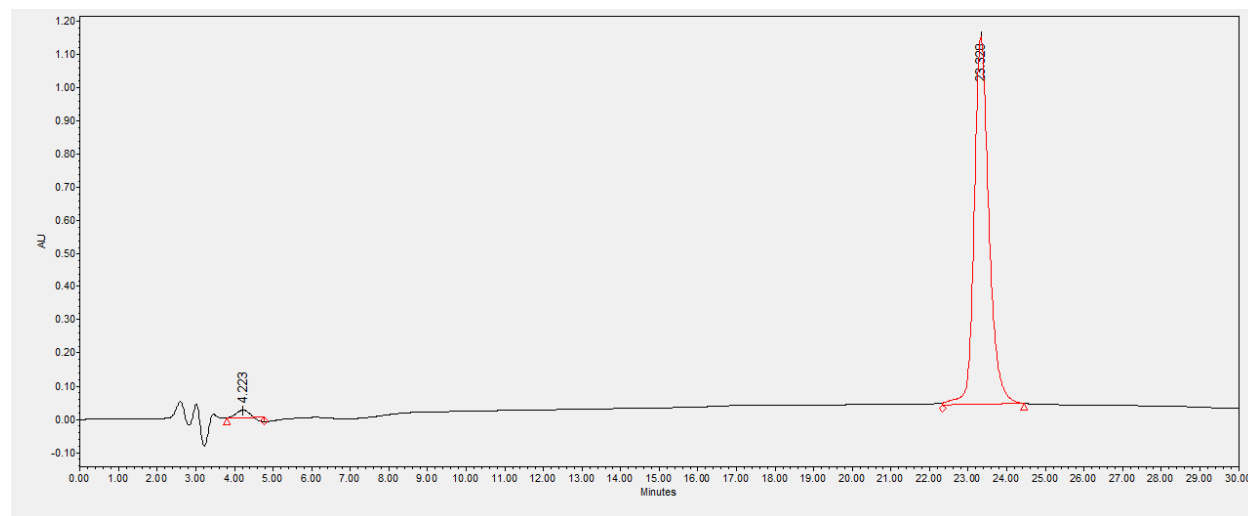
rP2



P3



P4



P3 microspheres from a 5 mg/mL solution of (A) 4:1 ethanol:water (B) 4:1 isopropanol:water.

