

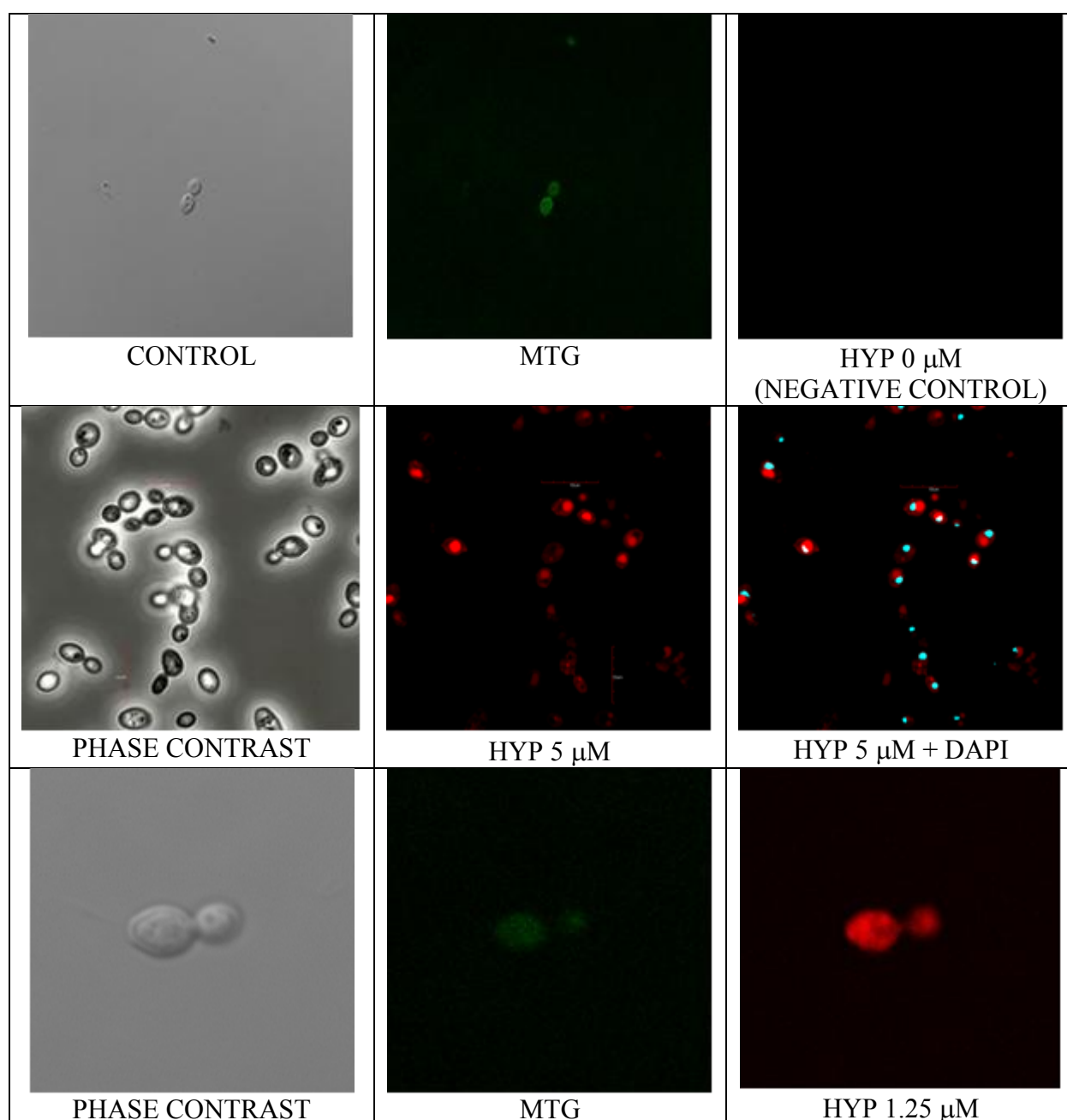
ELECTRONIC SUPPLEMENTARY INFORMATION

On the mechanism of *Candida* spp. photoinactivation by hypericin

Patricia López-Chicón^a, Manuel P. Paz-Cristobal^b, Antonio Rezusta^{b,c}, Carmen Aspiroz^{b,d},
María Royo-Cañas^b, Elena Andres-Ciriano^b, Yolanda Gilaberte^{b,e*}, Montserrat Agut^a and
Santi Nonell^{a*}

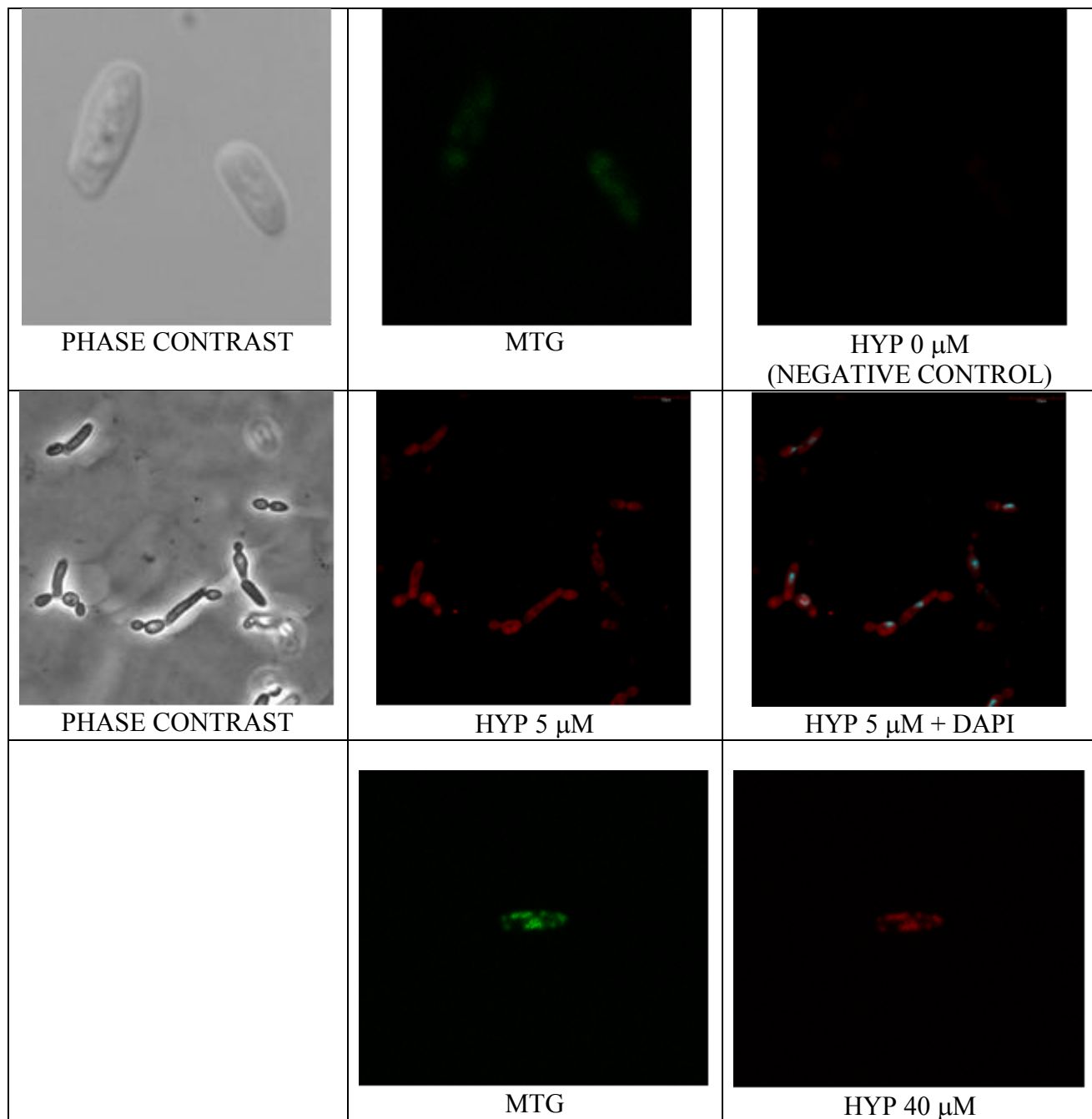
Microscopy images of *Candida* yeasts incubated with hypericin (HYP) and the probes MitoTracker Green (MTG) and 4',6-diamidino-2-phenylindole (DAPI).

Candida albicans ATCC 10231



ELECTRONIC SUPPLEMENTARY INFORMATION

Candida krusei ATCC 6258



ELECTRONIC SUPPLEMENTARY INFORMATION

Candida parapsilosis ATCC 22019

