

Supporting Information for:
Morphology Controlling of Calcium Carbonate by
Self-Assembled Surfactant Micelles on PET Substrate

Zhenyou Li, Li Xing, Junhui Xiang*, Xiaohong Liang¹*, Chunlin Zhao, Huazheng Sai and

Fei Li

College of Materials Science and Opto-Electronic Technology, University of the

Chinese Academy of Sciences,

Yuquan Road 19A, Beijing, 100049 China

*To whom correspondence should be addressed. E-mail: xiangjh@ucas.ac.cn

¹ College of Materials Science and Engineering, Taiyuan University of Technology, Taiyuan 030024, China

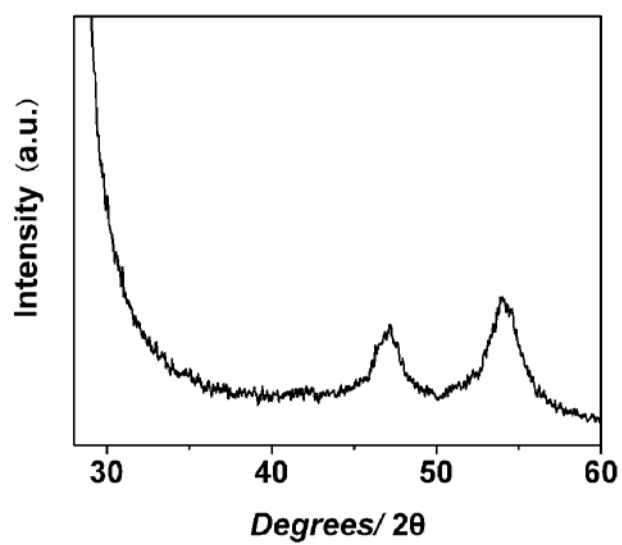


Figure S1. The XRD pattern of blank PET substrate. There are two broad peaks observed at 47.2° and 54.1°

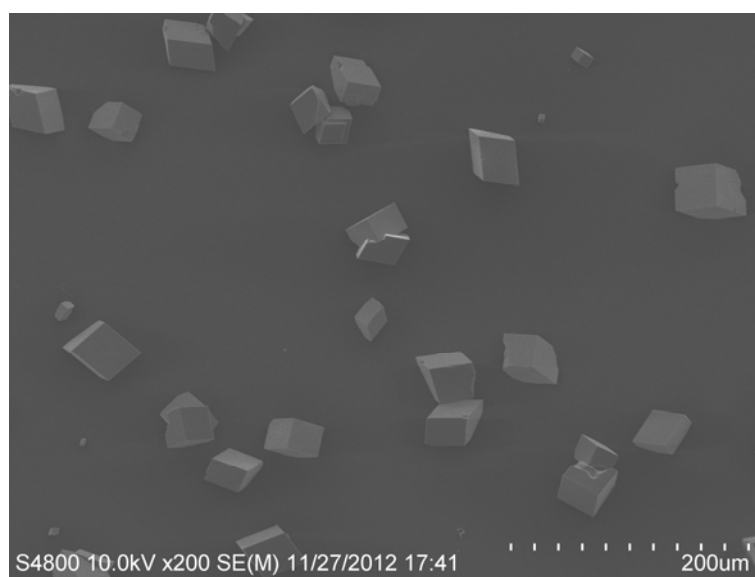


Figure S2. The SEM image of crystals grown at the interfaces for 48h.