

Cell adhesion on nanopatterned fibronectin substrates

Dan Liu, Che Azurahaman Che Abdullah, Richard P. Sear and Joseph L. Keddie

Department of Physics and Surrey Materials Institute, University of Surrey,

Guildford, Surrey, United Kingdom GU2 7XH

Supplementary Data

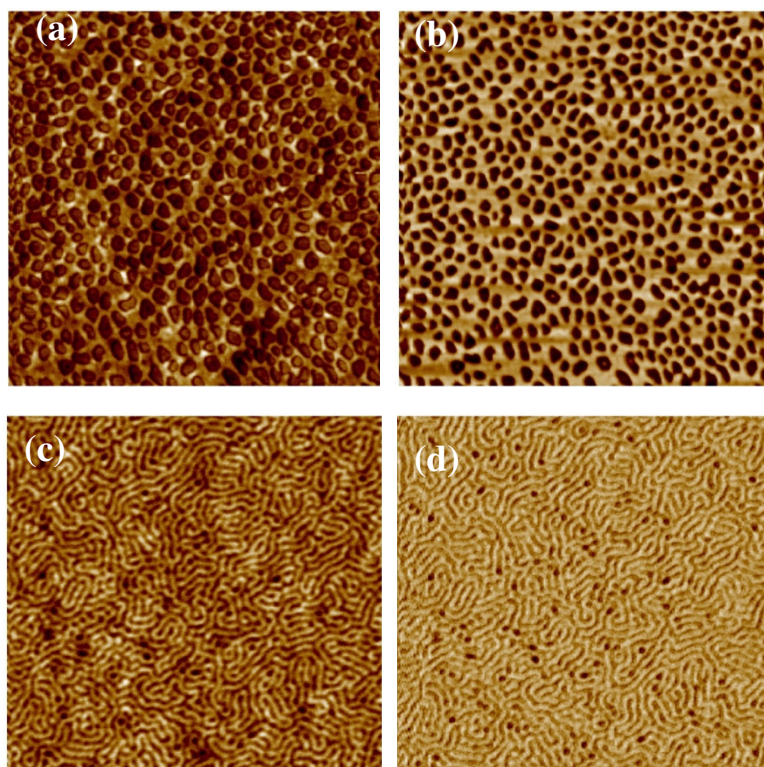


Figure S1. AFM images of PS-*b*-PI copolymer thin films before FN adsorption. The upper row shows AFM height (a) and phase (b) images of a PS(45)-*b*-PI(46) film (17.7 nm thick), and the bottom row shows AFM height (c) and phase (d) images of a PS(65)-*b*-PI(26) film (17.8 nm thick). Image sizes are 2 μm \times 2 μm .