

Supplementary information

Table 5:

a) A summary of the statistical data comparing peptide P₁₁-8 to collagen control gels.

b) Approximate cell numbers contained in peptide P₁₁-8 gel matrices and estimated cell population doublings at the end of the cell culture experiments. Data calculated using the equation: number of cells = ATPLite CPS / 15.689

| a) | Cells per well | Day 0 | Day 14 |
|----|----------------|-----------------|----------------|
| | 500 | NS | NS |
| | 5000 | NS | Lower (p<0.05) |
| | 50000 | Higher (p<0.05) | Lower (p<0.05) |

| b) | Calculated Cell Number | Estimated Cell Population Doublings |
|---|------------------------|-------------------------------------|
| P ₁₁ -8 500 cells.well ⁻¹ | 2.4×10^3 | 2 |
| P ₁₁ -8 5000 cells.well ⁻¹ | 1.3×10^6 | 8 |
| P ₁₁ -8 50000 cells.well ⁻¹ | 1.9×10^6 | 5 |
| Collagen 500 cells.well ⁻¹ | 1.1×10^6 | 11 |
| Collagen 5000 cells.well ⁻¹ | 4.1×10^6 | 10 |
| Collagen 50000 cells.well ⁻¹ | 5.3×10^6 | 7 |

Table 6:

a) A summary of the statistical data comparing peptide P₁₁-12 to collagen control gels.

b) Approximate cell numbers contained in peptide P₁₁-12 gel matrices and estimated cell population doublings at the end of cell culture experiments. Data calculated using the equation ; number of cells = ATPLite CPS / 15.689

| a) | Cells per well | Day 0 | Day 14 |
|----|----------------|-----------------|----------------|
| | 500 | NS | NS |
| | 5000 | NS | Lower (p<0.05) |
| | 50000 | Higher (p<0.05) | Lower (p<0.05) |

| b) | Calculated Cell Number | Estimated Cell Population Doublings |
|--|------------------------|-------------------------------------|
| P ₁₁ -12 500 cells.well ⁻¹ | 235 | 0 |
| P ₁₁ -12 5000 cells.well ⁻¹ | 7.1×10^3 | < 1 |
| P ₁₁ -12 50000 cells.well ⁻¹ | 2.2×10^6 | 5 |
| Collagen 500 cells.well ⁻¹ | 1.3×10^6 | 11 |
| Collagen 5000 cells.well ⁻¹ | 3.5×10^6 | 9 |
| Collagen 50000 cells.well ⁻¹ | 5.1×10^6 | 7 |

Table 7:

a) A summary of the statistical data comparing peptide P₁₁-16 to collagen control gels.

b) Approximate cell numbers contained in peptide P₁₁-16 gel matrices and estimated cell population doublings at the end of cell culture experiments. Data calculated using the equation number of cells = ATPLite CPS / 15.689

| a) | Cells per well | Day 0 | Day 14 |
|----|----------------|----------------|----------------|
| | 500 | NS | NS |
| | 5000 | NS | Lower (p<0.05) |
| | 50000 | Lower (p<0.05) | Lower (p<0.05) |

| b) | Calculated Cell Number | Estimated Cell Population Doublings |
|--|------------------------|-------------------------------------|
| P ₁₁ -16 500 cells.well ⁻¹ | 396 | 0 |
| P ₁₁ -16 5000 cells.well ⁻¹ | 2.4×10^4 | 2 |
| P ₁₁ -16 50000 cells.well ⁻¹ | 4.6×10^3 | 0 |
| Collagen 500 cells.well ⁻¹ | 1.8×10^6 | 11 |
| Collagen 5000 cells.well ⁻¹ | 5×10^6 | 10 |
| Collagen 50000 cells.well ⁻¹ | 6.3×10^6 | 7 |

Table 8:

a) A summary of the statistical data comparing peptide P₁₁-18 to collagen control gels.

b) Approximate cell numbers contained in peptide P₁₁-18 gel matrices and estimated cell population doublings at the end of cell culture experiments. Data calculated using the equation number of cells = ATPLite CPS / 15.689

| a) | Cells per well | Day 0 | Day 14 |
|----|----------------|----------------|----------------|
| | 500 | NS | Lower (p<0.05) |
| | 5000 | NS | Lower (p<0.05) |
| | 50000 | Lower (p<0.05) | Lower (p<0.05) |

| b) | Calculated Cell Number | Estimated Cell Population Doublings |
|--|------------------------|-------------------------------------|
| P ₁₁ -18 500 cells.well ⁻¹ | 37 | 0 |
| P ₁₁ -18 5000 cells.well ⁻¹ | 90 | 0 |
| P ₁₁ -18 50000 cells.well ⁻¹ | 224 | 0 |
| Collagen 500 cells.well ⁻¹ | 2.8 × 10 ⁶ | 11 |
| Collagen 5000 cells.well ⁻¹ | 4.7 × 10 ⁶ | 10 |
| Collagen 50000 cells.well ⁻¹ | 7.1 × 10 ⁶ | 7 |

Table 9:

a) Approximate cell numbers contained in collagen gels supplemented with 0.9 mg.ml⁻¹ TFA and estimated cell population doublings at the end of cell culture experiments. Data calculated using the equation number of cells = ATPLite CPS / 15.689.

b) Approximate cell numbers contained in collagen gels supplemented with 5.1 mg.ml⁻¹ TFA and estimated cell population doublings at the end of cell culture experiments. Data calculated using the equation number of cells = ATPLite CPS / 15.689.

| a) | Calculated Cell Number | Estimated Cell Population Doublings |
|---|-----------------------------|-------------------------------------|
| Collagen/TFA (0.9mg.ml ⁻¹) 500 cells.well ⁻¹ | 1.6×10^6 | 11 |
| Collagen/TFA (0.9mg.ml ⁻¹) 5000 cells.well ⁻¹ | 2.8×10^6 | 9 |
| Collagen/TFA (0.9mg.ml ⁻¹) 50000 cells.well ⁻¹ | 3.7×10^6 | 6 |
| Collagen Control 500 cells.well ⁻¹ | 2.9×10^6 | 12 |
| Collagen Control 5000 cells.well ⁻¹ | 3.1×10^6 | 9 |
| Collagen Control 50000 cells.well ⁻¹ | 4.9×10^6 | 7 |
| b) | Calculated Cell Number | Estimated Cell Population Doublings |
| Collagen/TFA (5.1mg.ml ⁻¹) 500 cells.well ⁻¹ | 3.3×10^4 | 6 |
| Collagen/TFA (5.1mg.ml ⁻¹) 5000 cells.well ⁻¹ | 3.2×10^5 | 6 |
| Collagen/TFA (5.1mg.ml ⁻¹) 50000 cells.well ⁻¹ | 4.9×10^6 | 7 |
| Collagen Control 500 cells.well ⁻¹ | 1.5×10^6 | 11 |
| Collagen Control 5000 cells.well ⁻¹ | 3.4×10^6 | 9 |
| Collagen Control 50000 cells.well ⁻¹ | $5 \times 10^6 \times 10^6$ | 7 |

Figure 9

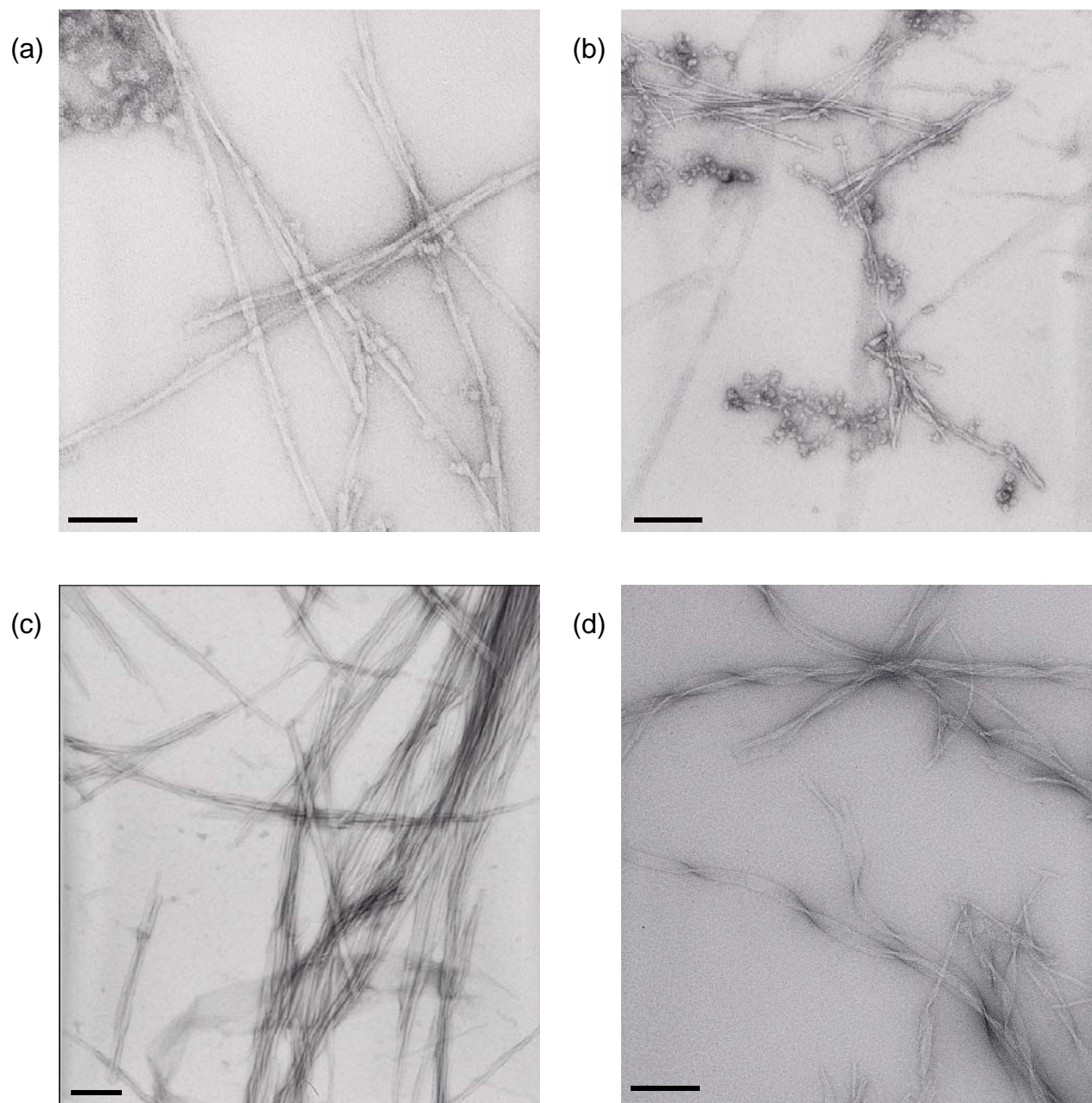


Figure 10

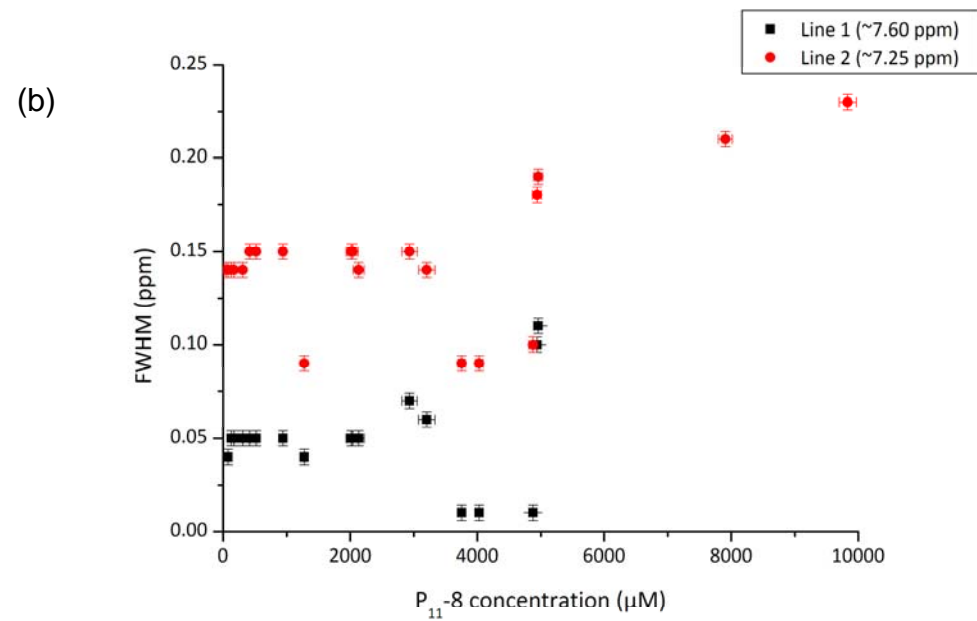
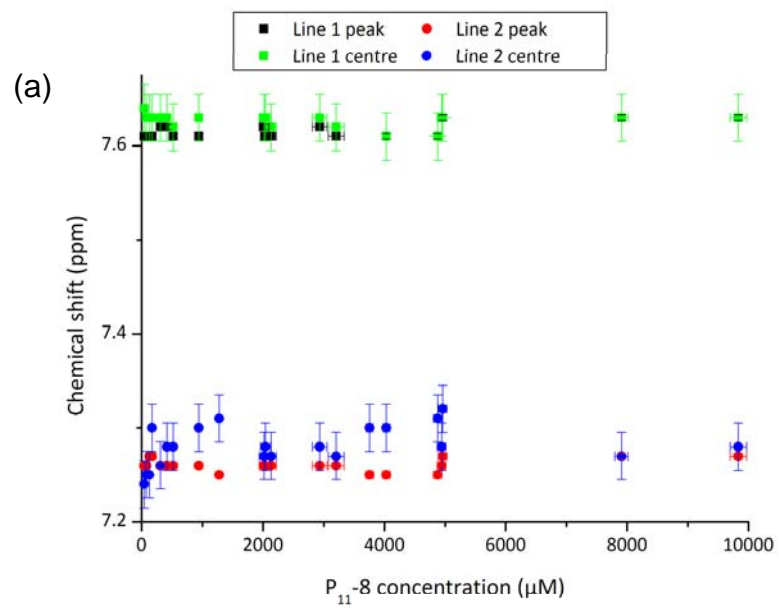


Figure 11

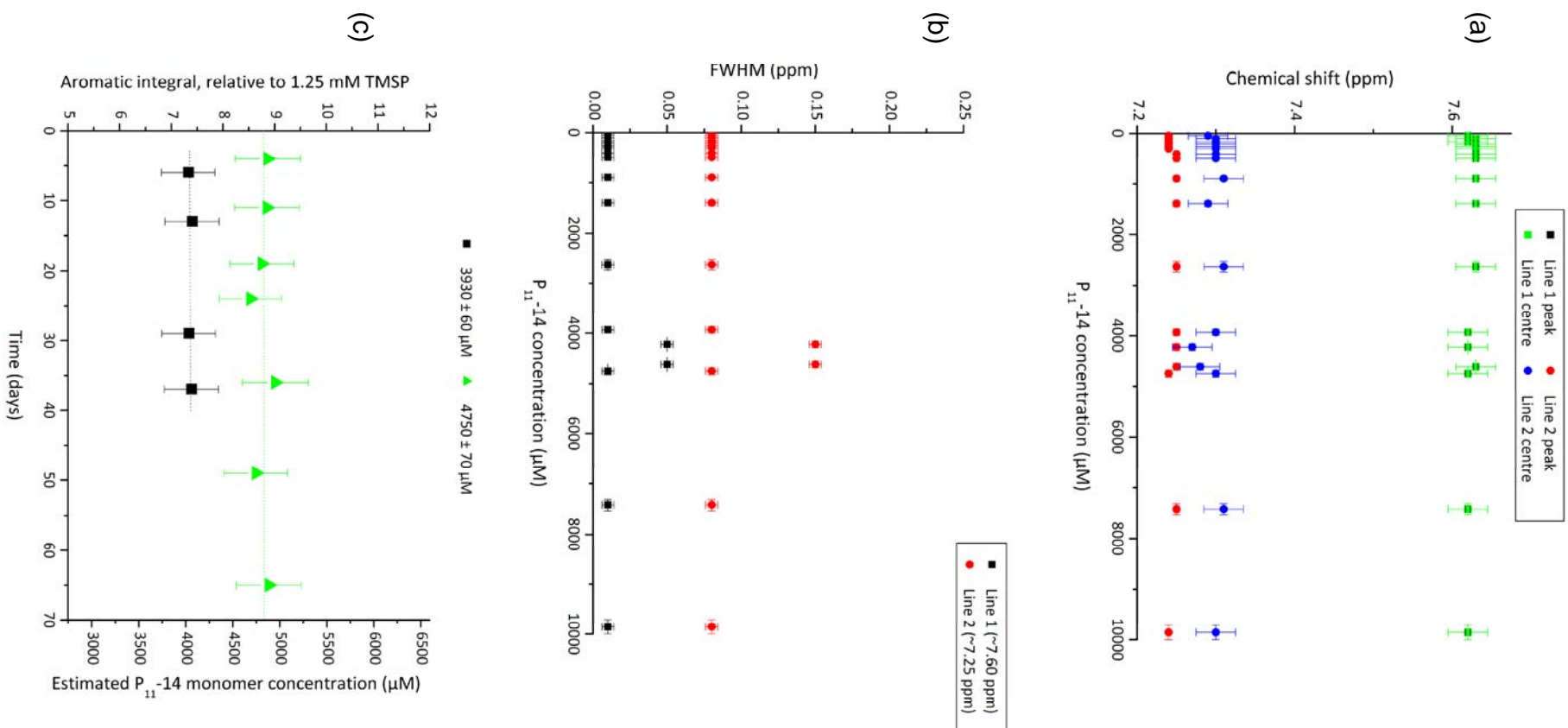


Figure 12

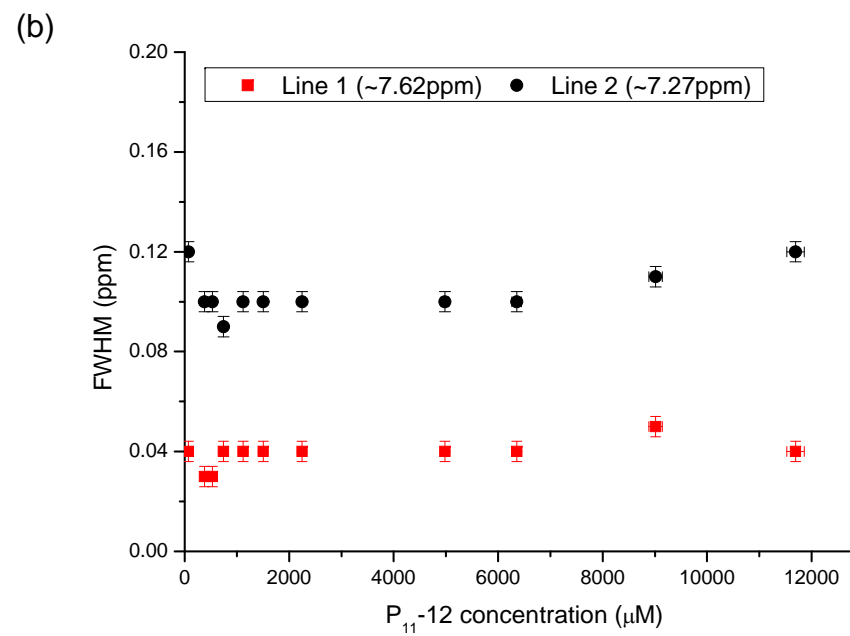
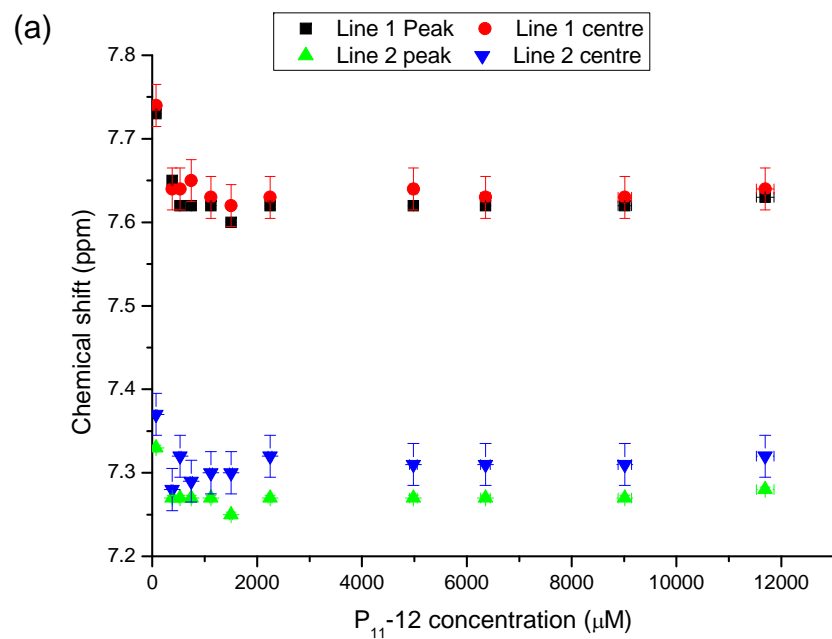
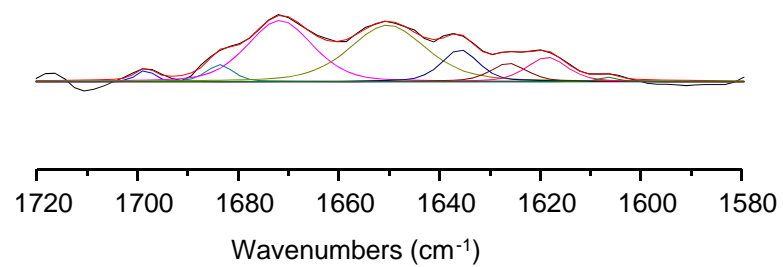
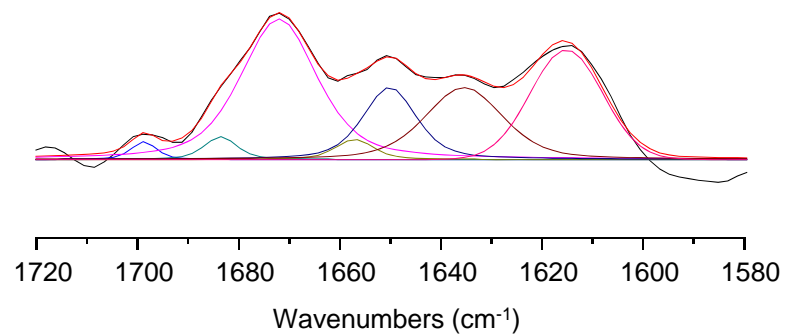


Figure 13

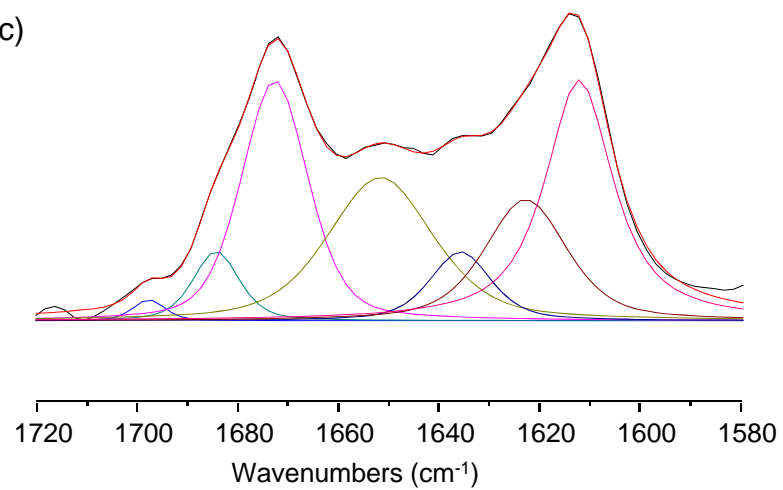
(a)



(b)



(c)



(d)

