

Supporting information

Self-assembly of chiral block and gradient copolymers

*Meta M. Bloksma, Stephanie Hoepfener, Cécile D'Haese, Kristian Kempe, Ulrich Mansfeld,
Renzo M. Paulus, Jean-François Gohy, Ulrich S. Schubert and Richard Hoogenboom*

Contents:

I SEC traces

II Cryo-TEM

III Angular dependent DLS results

IV CONTIN size distribution histograms

I SEC traces

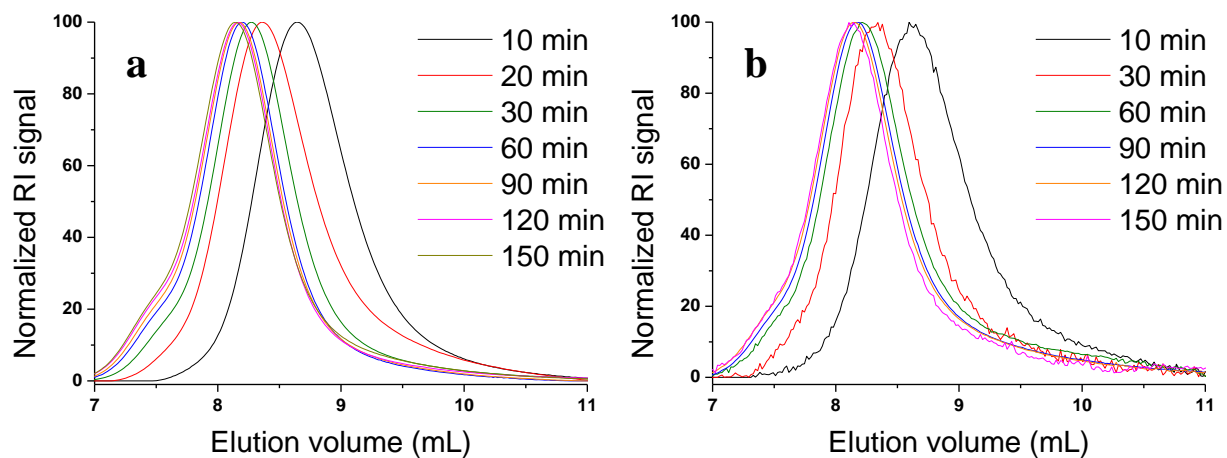


Fig. 1 SEC traces (CHCl_3) of the statistical copolymerization of EtOx with **a**) *R*-BuEtOx and **b**) *RS*-BuEtOx, ($M/I = 100$, EtOx:*R*(*S*)-BuEtOx = 70:30; $M_0 = 4$ M).

II Cryo-TEM

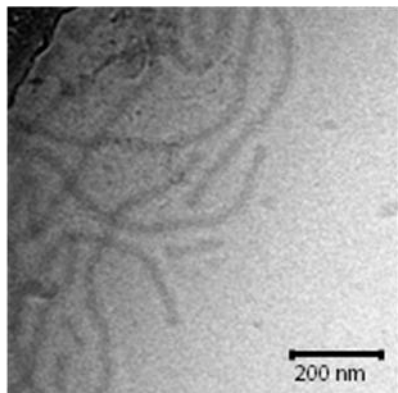


Fig. 2 Assembly of five tilted cryo-TEM images of pEtOx₅₆-*b*-R-BuEtOx₃₈-V that proves the formation of a 3-dimensional fiber-like structure.

III Angular dependent DLS results

Table 1 DLS results*

Polymer	R _h (30°)	R _h (45°)	R _h (60°)	R _h (90°)	R _h (120°)	R _h (145°)
pEtOx ₆₇ -R-BuEtOx ₁₂ -I	14	13	14	13	14	15
pEtOx ₆₂ -R-BuEtOx ₁₆ -II	22	20	19	19	19	20
pEtOx ₆₄ -R-BuEtOx ₃₀ -III	91 and 230	85 and 210	95	86	104	90 and 205
pEtOx ₅₉ -R-BuEtOx ₃₁ -IV	95 and 230	132	121	116	135	85 and 210
pEtOx ₅₆ -R-BuEtOx ₃₈ -V	145	122	104	95	100	87 and 216
pEtOx ₅₄ -R-BuEtOx ₃₄ -VI	98 and 254	138	124	116	118	102 and 310
pEtOx ₄₅ -RS-BuEtOx ₁₆ -VII	18 and 123	18 and 110	82	15 and 85	17 and 87	115
pEtOx ₄₁ -RS-BuEtOx ₁₉ -VIII	18	17	18	17	17	18
pEtOx ₇₀ -stat-R-BuEtOx ₃₀	12	11	12	12	12	13

* R_h (in nm) measured at different angles for the samples investigated in this study at a concentration of 5 mg mL⁻¹. The reported values correspond to the maxima of the populations calculated in the CONTIN histogram.

IV CONTIN size distribution histograms

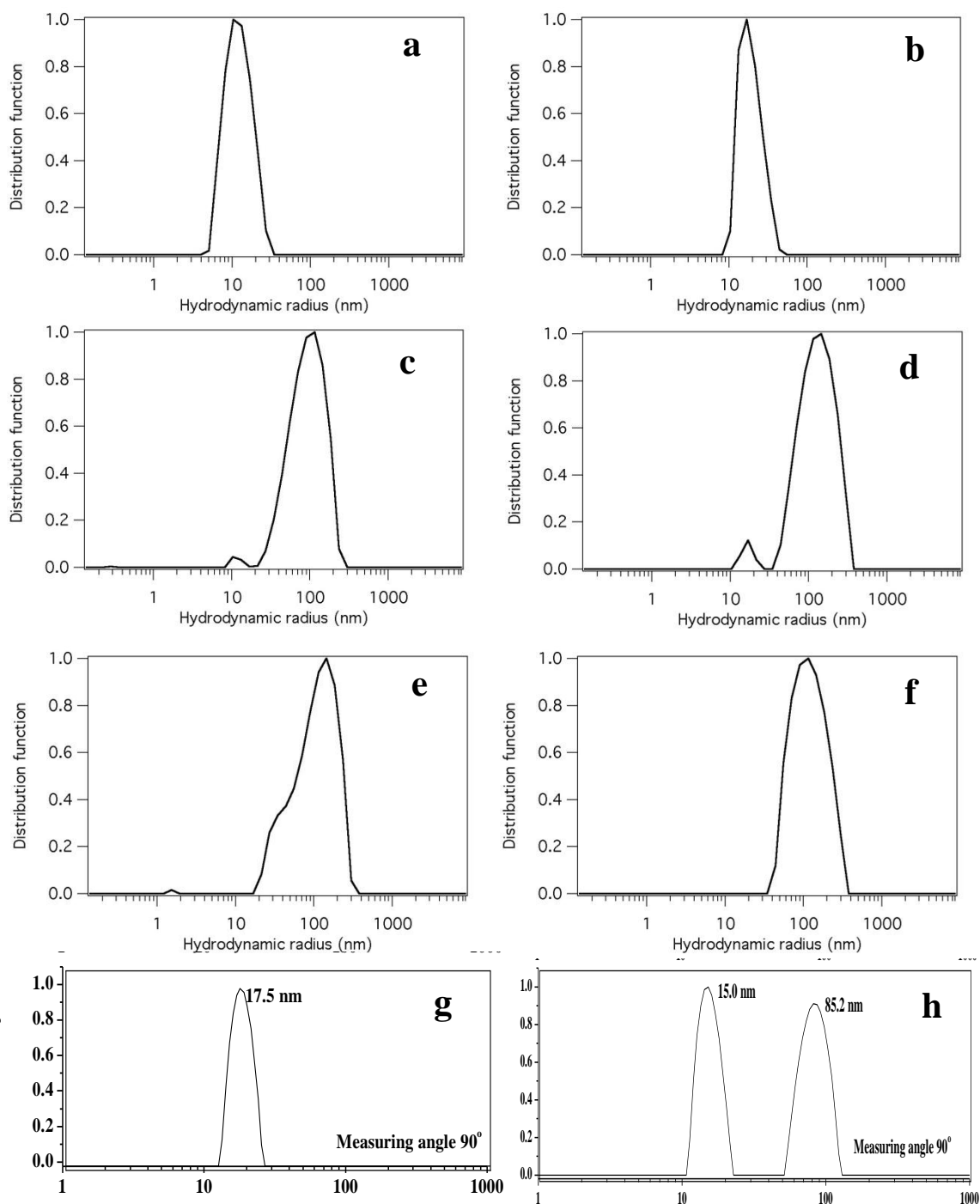


Fig. 3 CONTIN distribution functions measured by DLS (90°, 5 mg mL⁻¹) of **a)** pEtO_{x67}-

R-BuEtO_x₁₂-I, **b**) pEtO_x₆₂-*R*-BuEtO_x₁₆-II, **c**) pEtO_x₆₄-*R*-BuEtO_x₃₀-III, **d**) pEtO_x₅₉-*R*-BuEtO_x₃₁-IV, **e**) pEtO_x₅₆-*R*-BuEtO_x₃₈-V, **f**) pEtO_x₅₄-*R*-BuEtO_x₃₄-VI, **g**) pEtO_x₄₅-*RS*-BuEtO_x₁₆-VII and **h**) pEtO_x₄₁-*RS*-BuEtO_x₁₉-VIII.