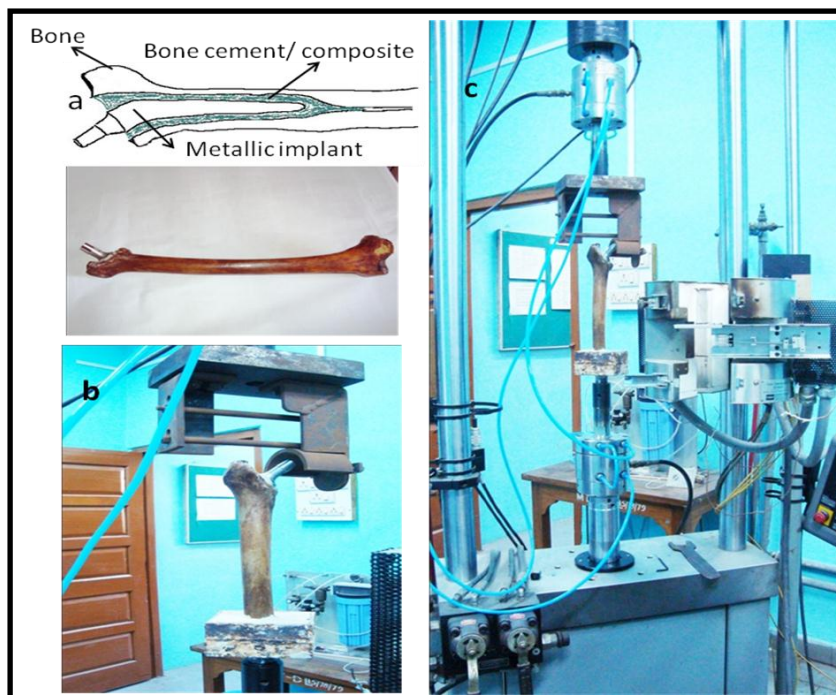


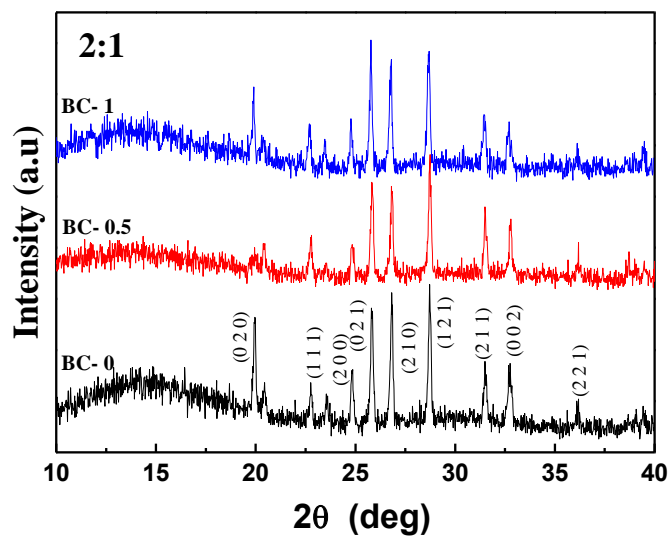
Supplementary Information

Layered double hydroxide induced advancement in joint prosthesis using bone cement: The effect of metal substitution

Govinda Kapusetti, Raghvendra Raman Mishra, Swati Srivastava, Nira Misra, Vakil Singh, Partha Roy, Santhosh Kumar Singh, Chanchal Chakraborty, Sudip Malik, Pralay Maiti



Supplementary figure S1: Experimental set up for fatigue testing (a) metallic cemented stem implanted human femur bone and its schematic diagram, (b) human hip joint (ilium) like set up (c) MTS machine with test specimen in position.



Supplementary figure S2: XRD patterns of 0.5 and 1wt% nanocomposites of LDH-2:1 and pure bone cement (BC-0) – taken from our previous work (J Biomed Mater Res 2012; 100A: 3363–3373).