

Electronic Supplementary Information

Folic Acid Modified Clay/Polymer Nanocomposites for Selective Cell Adhesion

F.B. Barlas,^a D. Ag Seleci,^a M. Ozkan,^b B. Demir,^a M. Seleci,^a M. Aydin,^c M.A. Tasdelen,^{c,d} H. M. Zareie,^{e,f} S. Timur,^{a,g,*} S. Ozelik^b and Y. Yagci^{c,h,*}

^aDepartment of Biochemistry, Faculty of Science, Ege University, 35100 Bornova-Izmir, Turkey.

^bDepartment of Chemistry, Faculty of Science, Izmir Institute of Technology, 35430 Urla-Izmir, Turkey.

^cDepartment of Chemistry, Istanbul Technical University, Maslak, Istanbul 34469, Turkey.

^dDepartment of Polymer Engineering, Faculty of Engineering, Yalova University, 77100 Yalova, Turkey.

^eDepartment of Materials Science and Engineering, Izmir Institute of Technology, 35430 Urla-Izmir, Turkey.

^fInstitute for Nanoscale Technology, University of Technology Sydney, Australia

^gEge University, Institute of Drug Abuse Toxicology & Pharmaceutical Sciences, 35100-Bornova, Izmir, Turkey.

^hCenter of Excellence for Advanced Materials Research (CEAMR) and Department of Chemistry, Faculty of Science, King Abdulaziz University, 21589, Jeddah, Saudi Arabia.

Figure S1

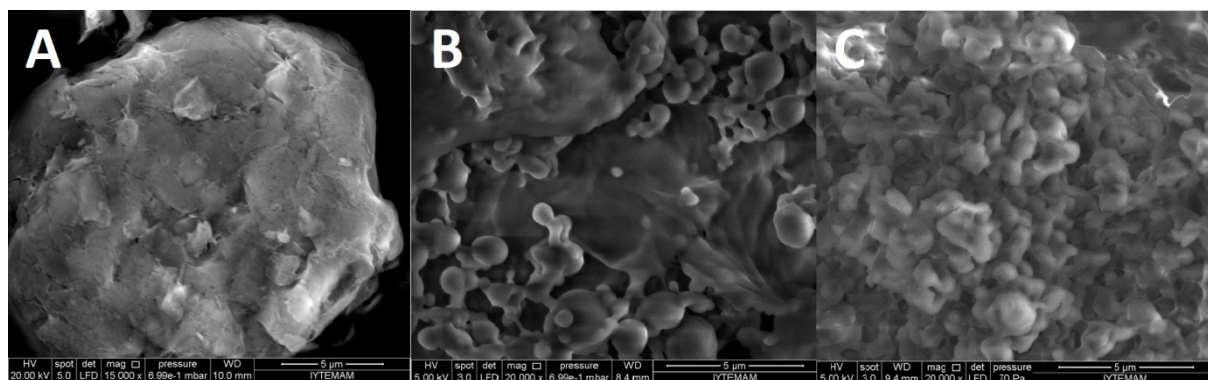


Figure S1. SEM micrographs of MMT(CH₂CH₂OH)₂ (A), PCL/MMT(CH₂CH₂OH)₂ (B) and NC-8 (C) with 20 000X magnification.

Figure S2

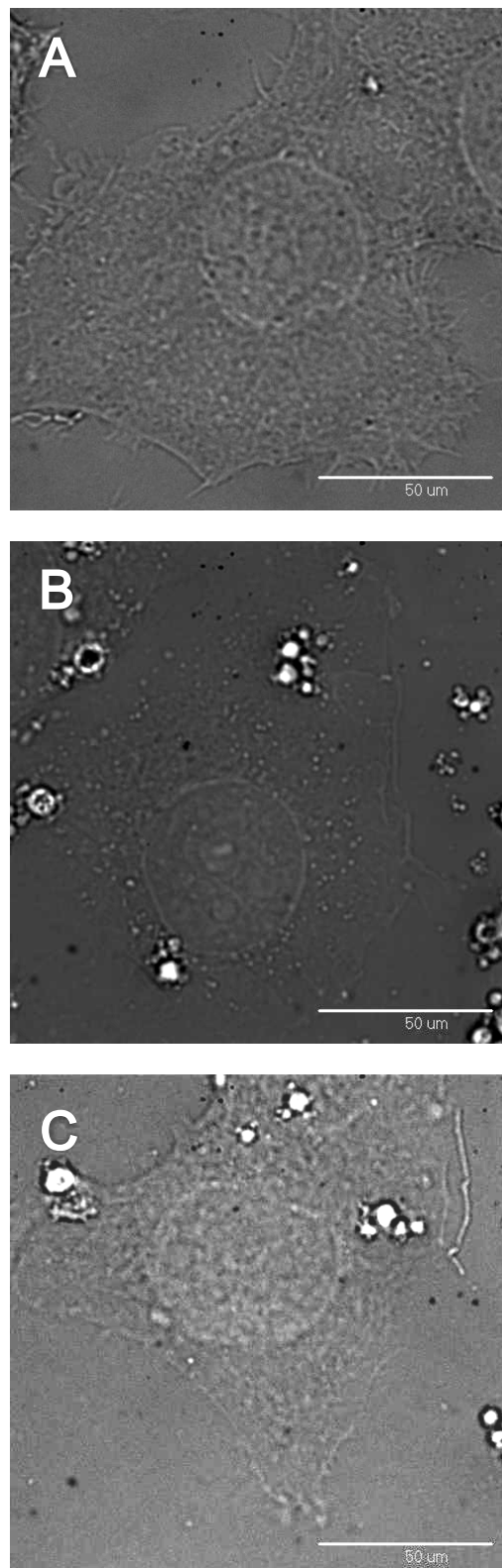


Figure S2. Bright-field microscopy of HeLa cells cultivated on Tissue Cultured Polystyrene (TCPS) (A), PCL/MMT(CH₂CH₂OH)₂ (B) and NC-8 (C) surfaces with 100X magnification.