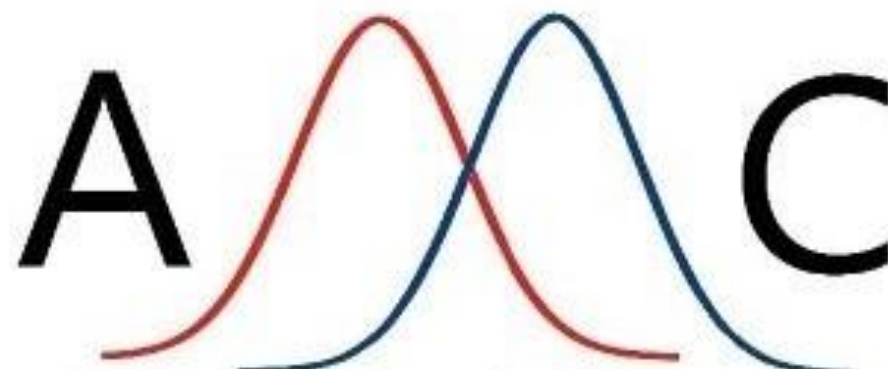


What exactly does a museum scientist do?

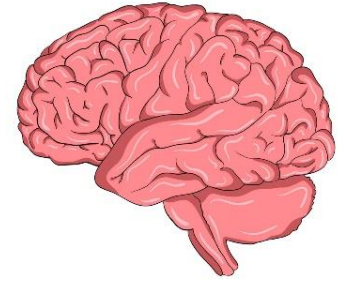
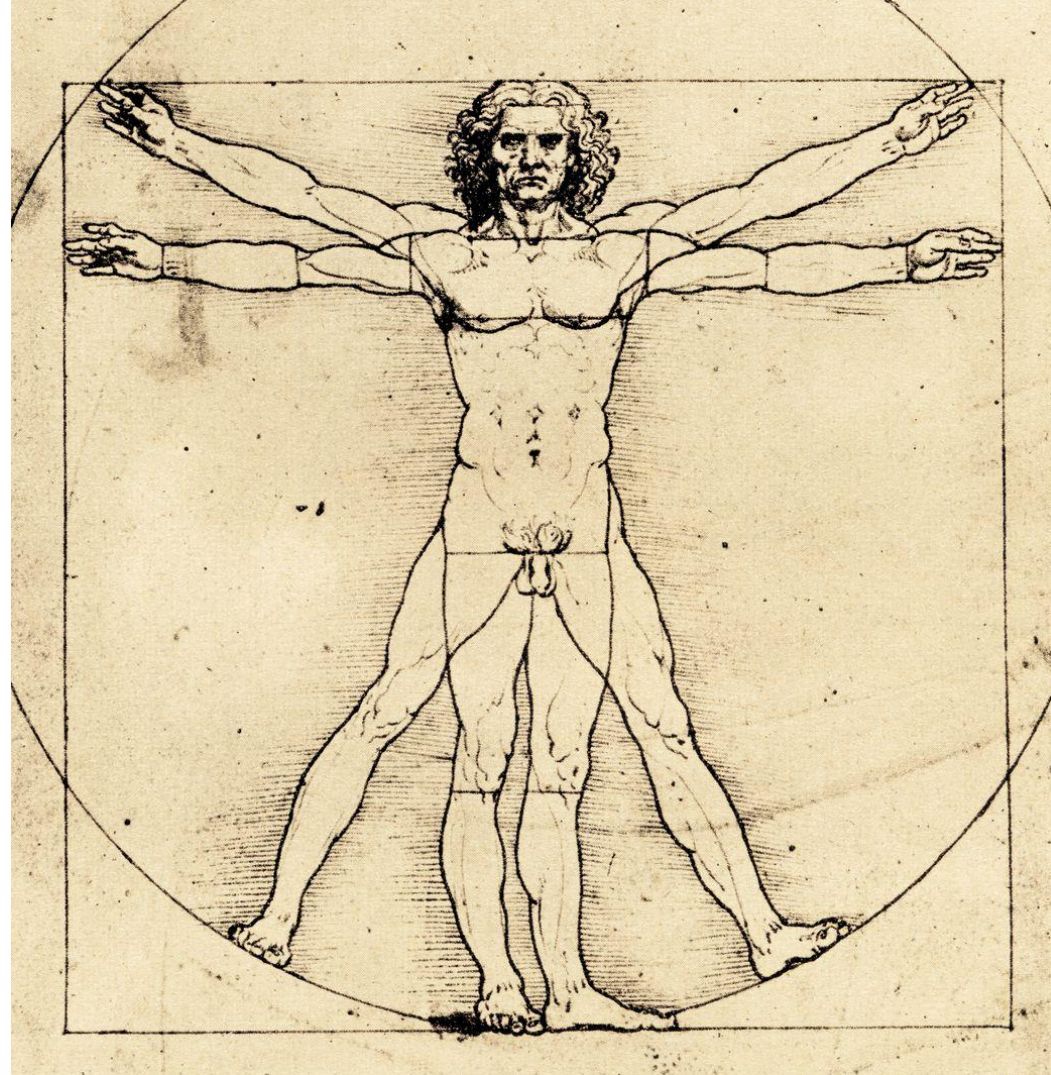
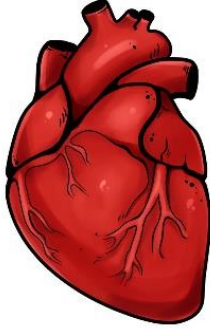
Lucia Burgio, Senior Scientist

V&A

V&A
17 February 2020



No simple answer... what does a medical doctor do?



Museum Scientists in the UK



Science Sections/Departments:

A dedicated team of scientists working on collection-related issues

1 to 12 scientists (or more!)

Pure research and/or ad hoc services



Museum Scientists at the V&A

Who do we interact with, and who asks for our help?

Conservators

Estates

Marketing

Curators

Learning

Projects

Services and research:

New Galleries

Core Collection Care

Exhibitions

Loans

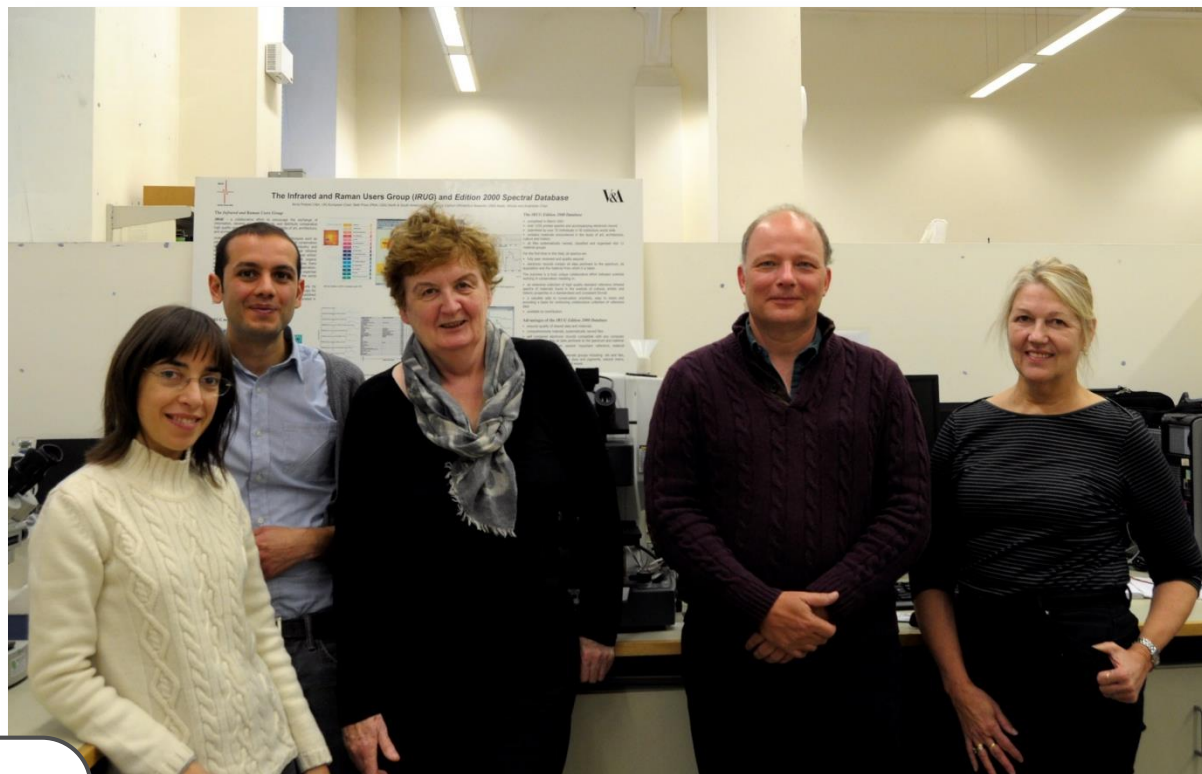
Physical spaces

Display and storage conditions

V&A Science Section: Staff specialism

Scientist (Environment)

Environmental monitoring,
data



Polymer Scientist

Modern materials



Material scientist

Colour, environment,
data



Preventive Conservator

IPM, risk management



Scientist (Object Analysis)

Analysis and technical examination

Equipment for Scientific Analysis: CSI V&A?

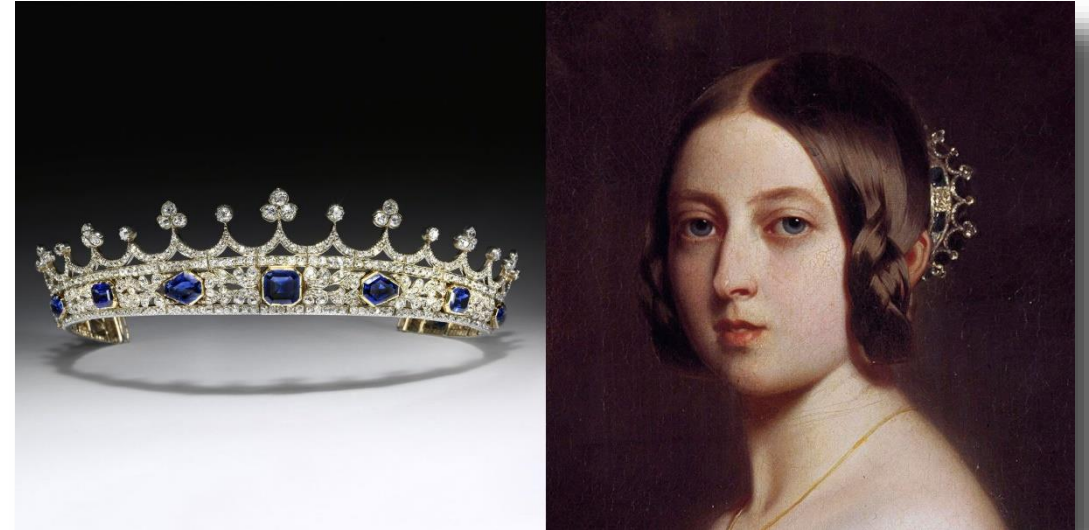


Why do we analyse objects?



Conservators

Curators

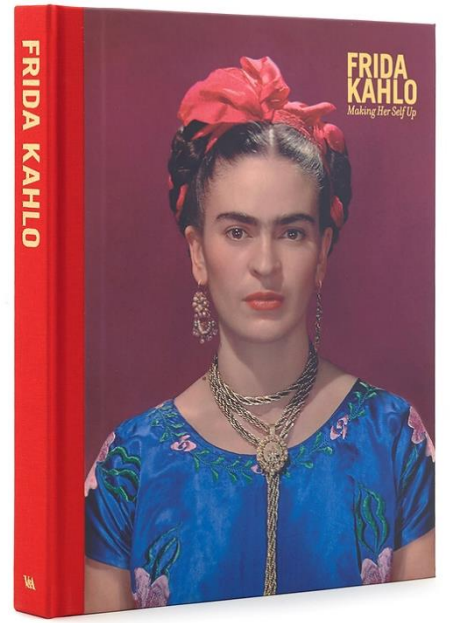


New acquisitions

Why do we analyse objects?



Labels



Catalogues and publications

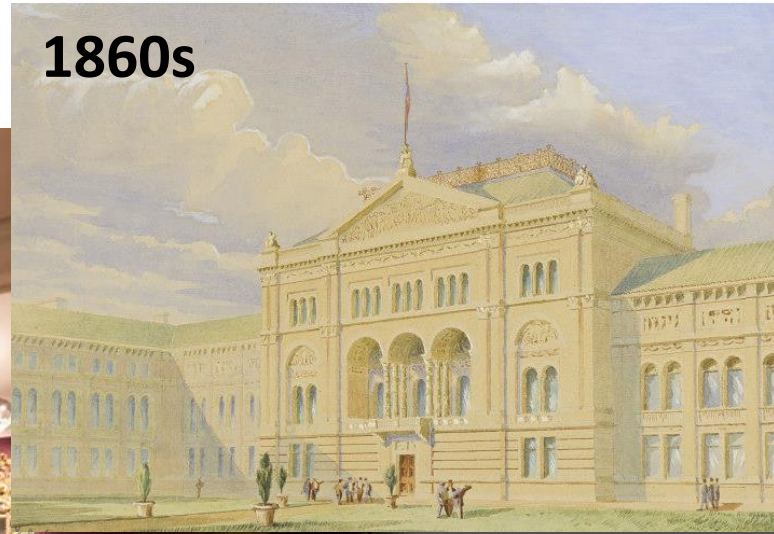


Authenticity/date

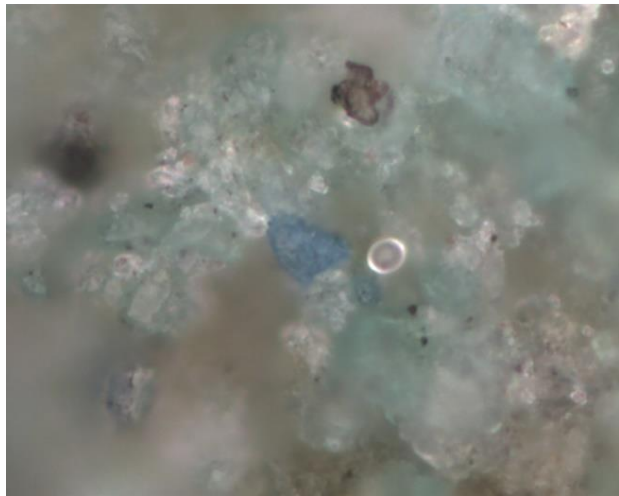
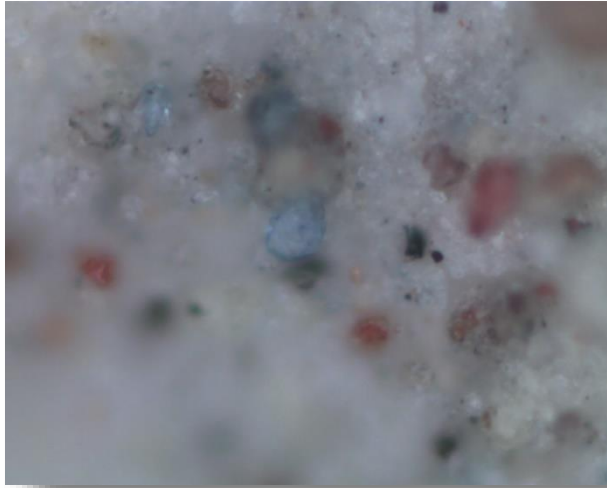


Research - unique objects

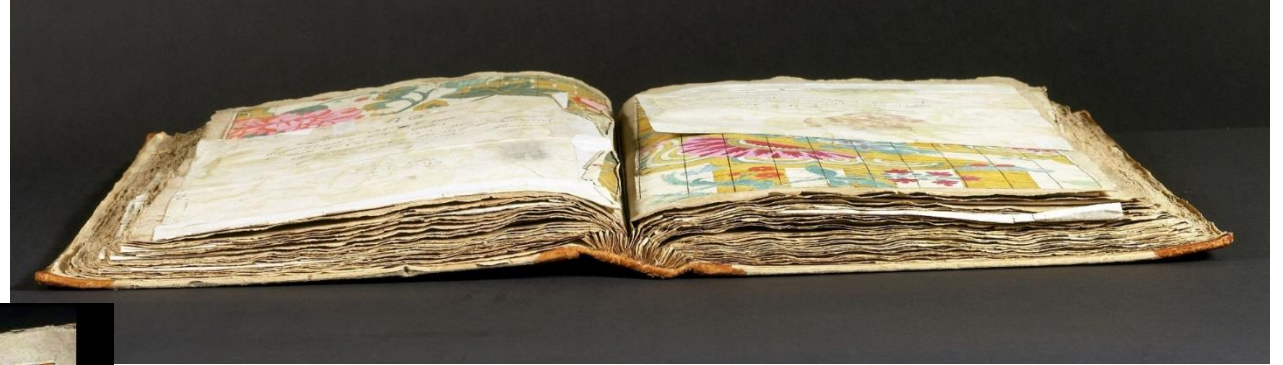
Stewards of our past, looking to the future



Portrait miniatures



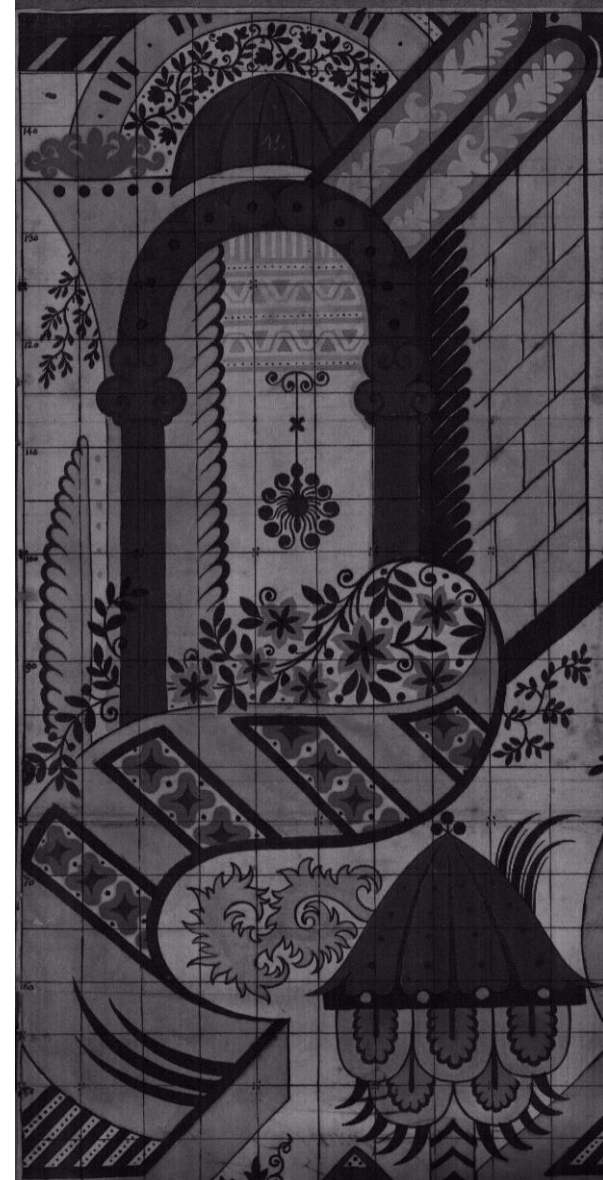
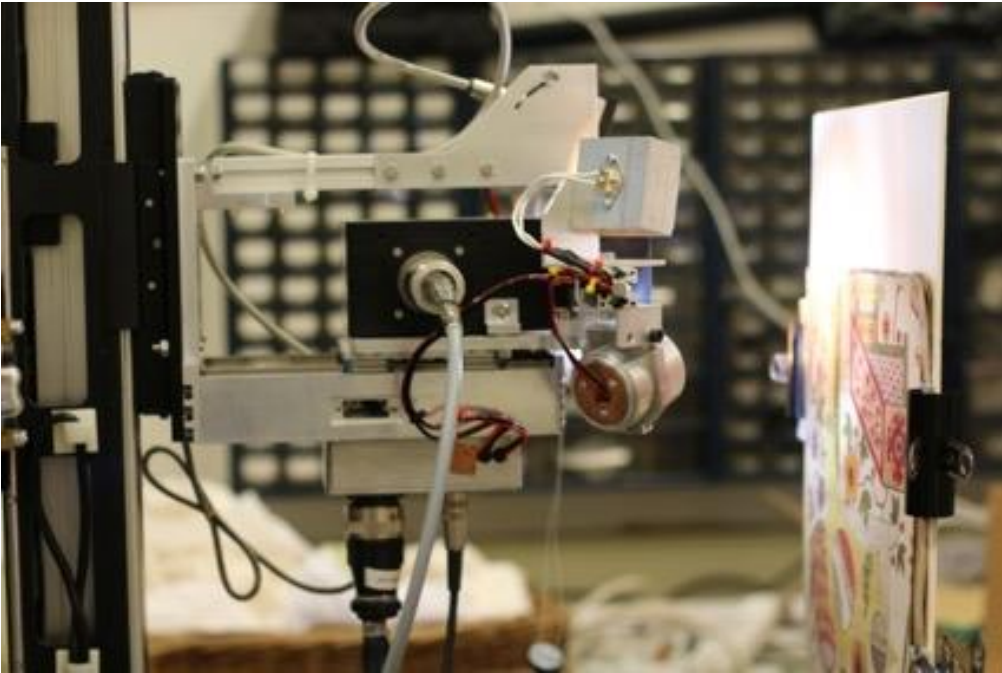
The Leman Album



- A collection of stunningly colourful early 18th century designs for woven silk textiles
- The Leman Album is being studied by scientists, conservators, curators, archivists, makers, social historians etc.

Check blog: <https://www.vam.ac.uk/blog/author/lucia-burgio>

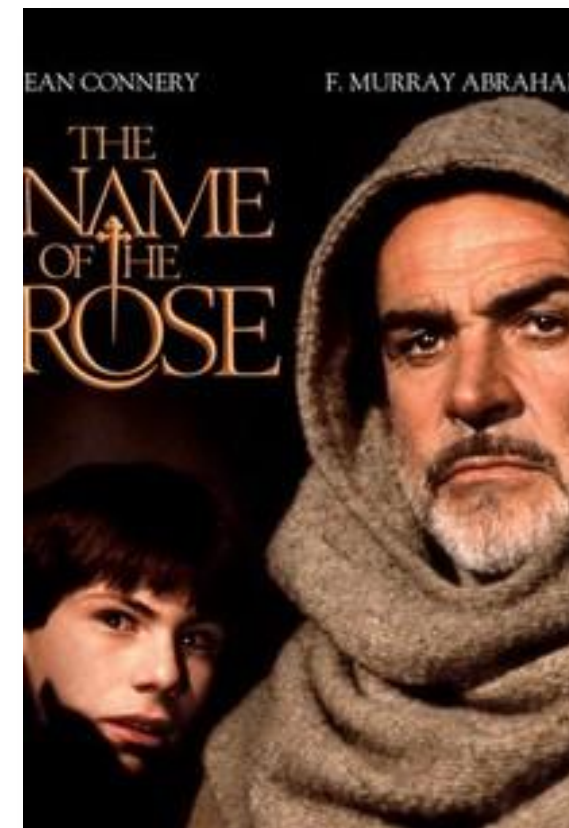
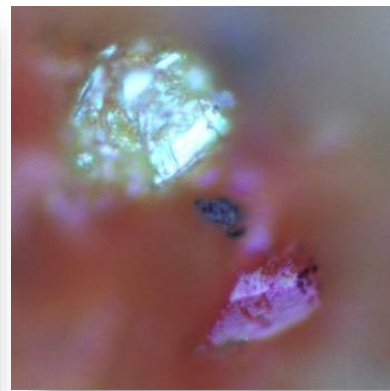
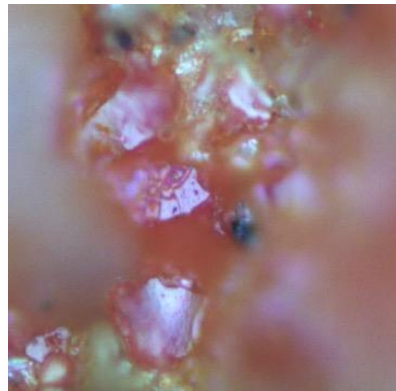
The Leman Album



The Leman Album



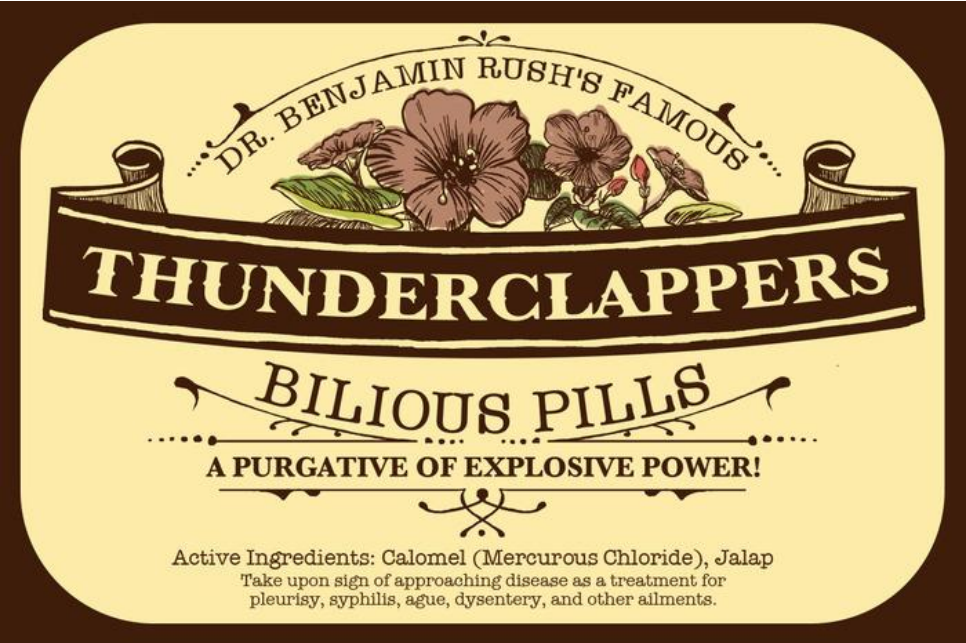
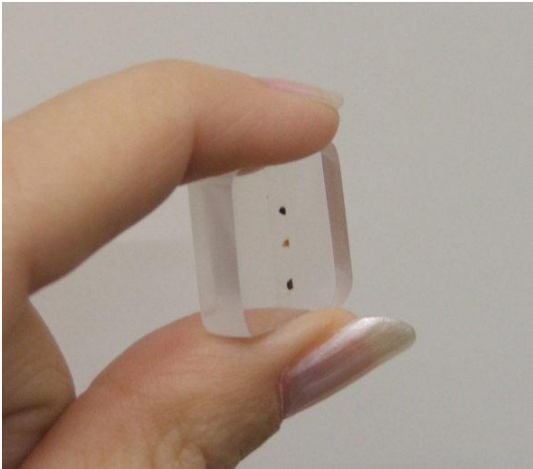
Leman album – V&A



The *barniz de Pasto* cabinet



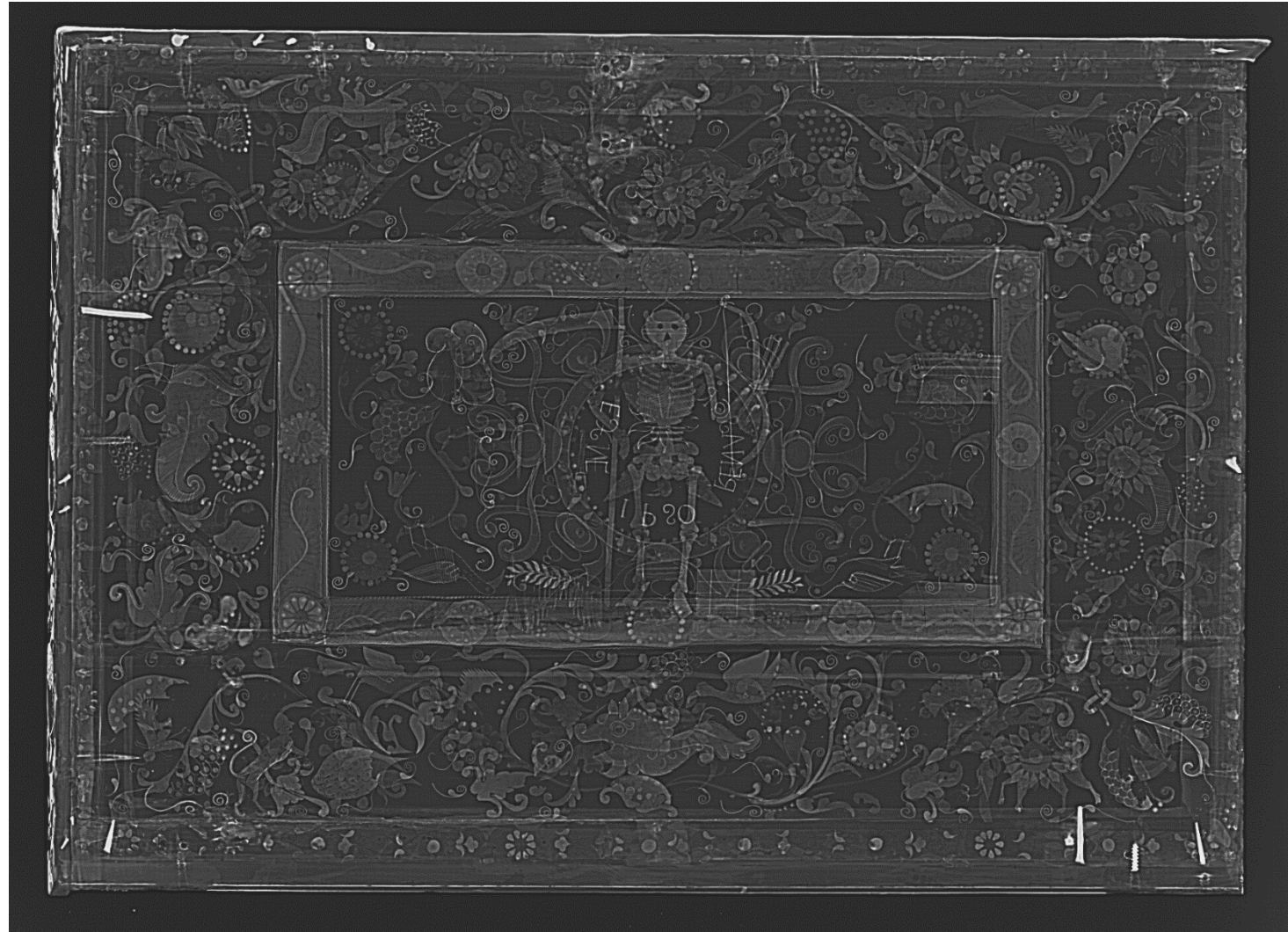
Calomel



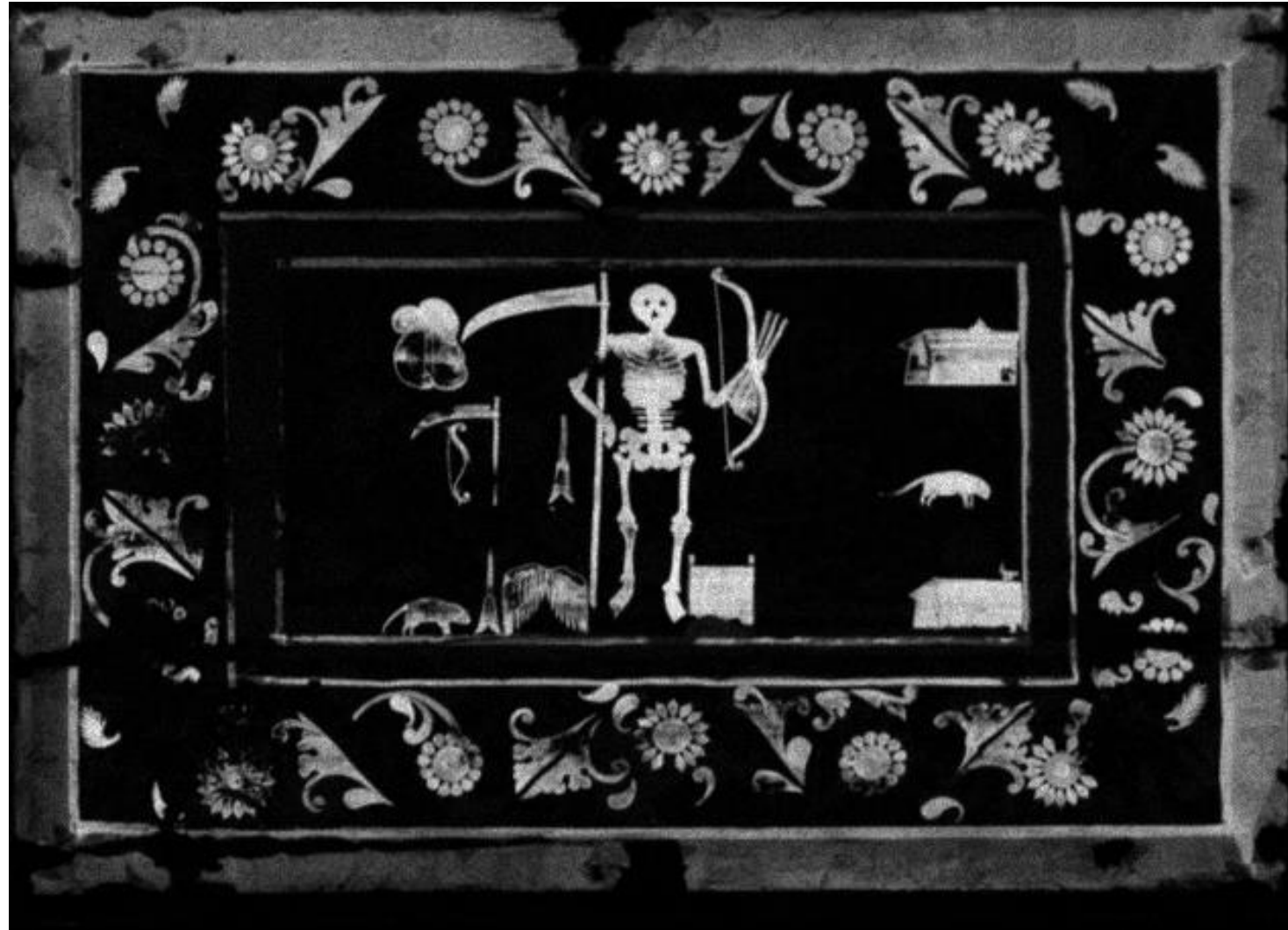
The *barniz de Pasto* cabinet



The *barniz de Pasto* cabinet



The *barniz de Pasto* cabinet



Mercury map

The *barniz de Pasto* cabinet



Titanium map

The *barniz de Pasto* cabinet



The *barniz de Pasto* cabinet

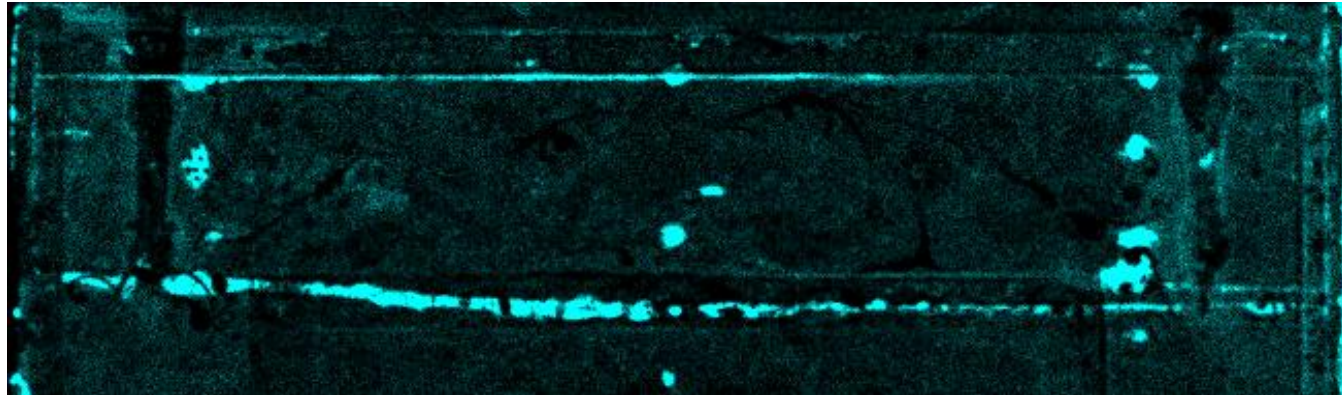


Mercury and lead
map

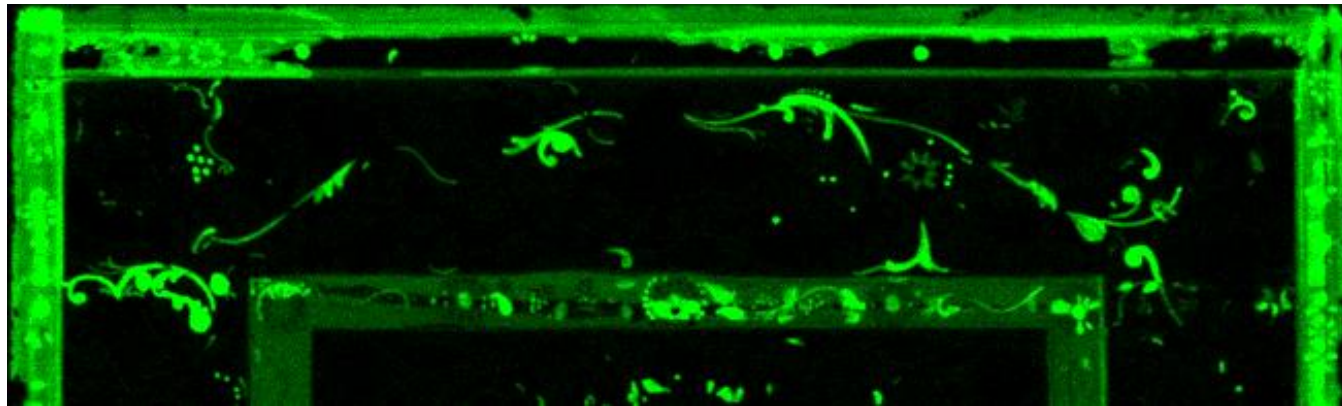
The *barniz de Pasto* cabinet



Mercury map



Calcium map



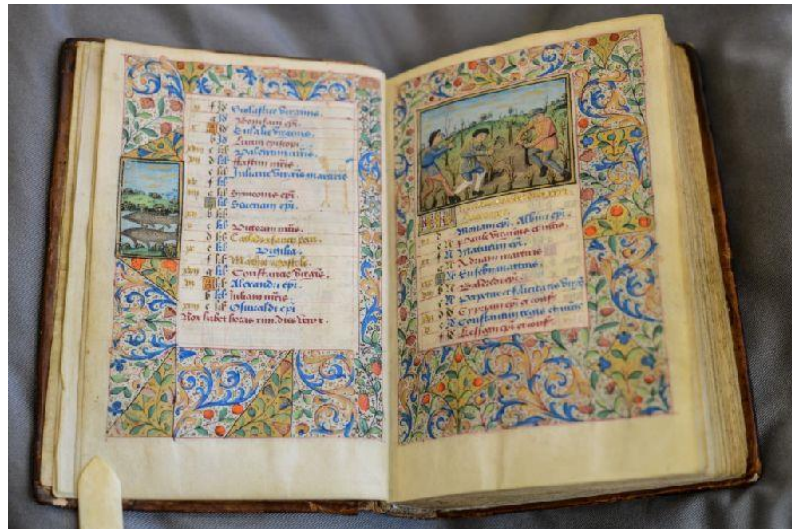
Lead map



Trade routes: Jean Bourdichon

French Court painter:

Book of Hours for Louis XII

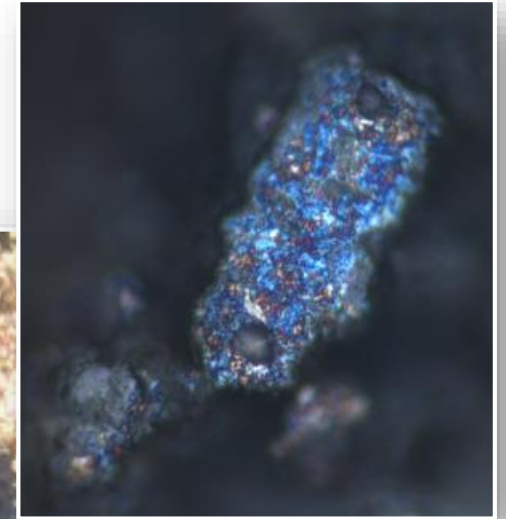
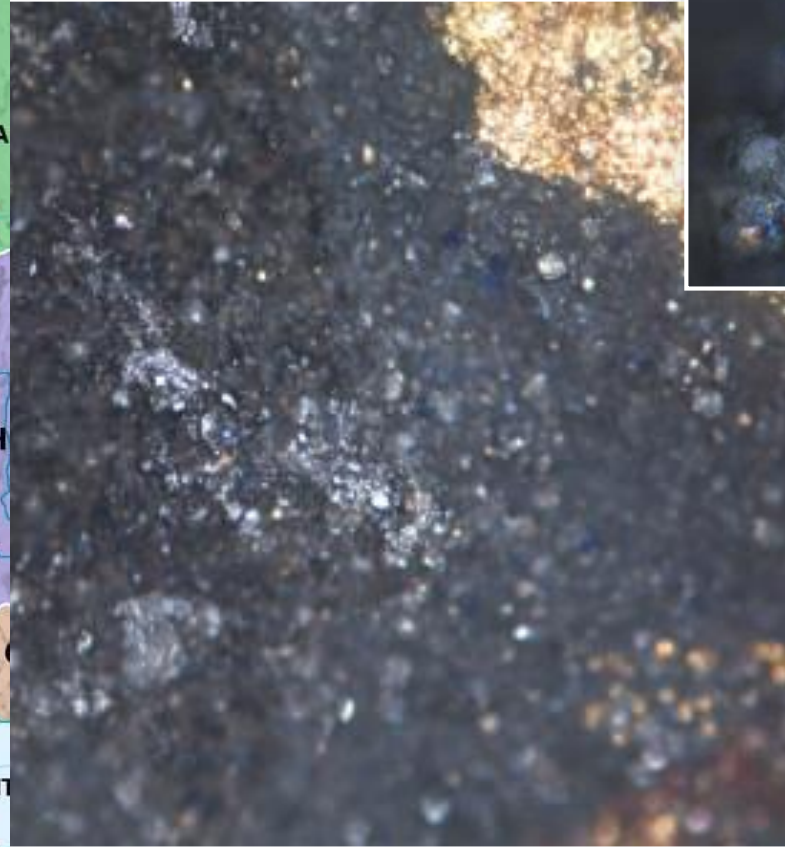
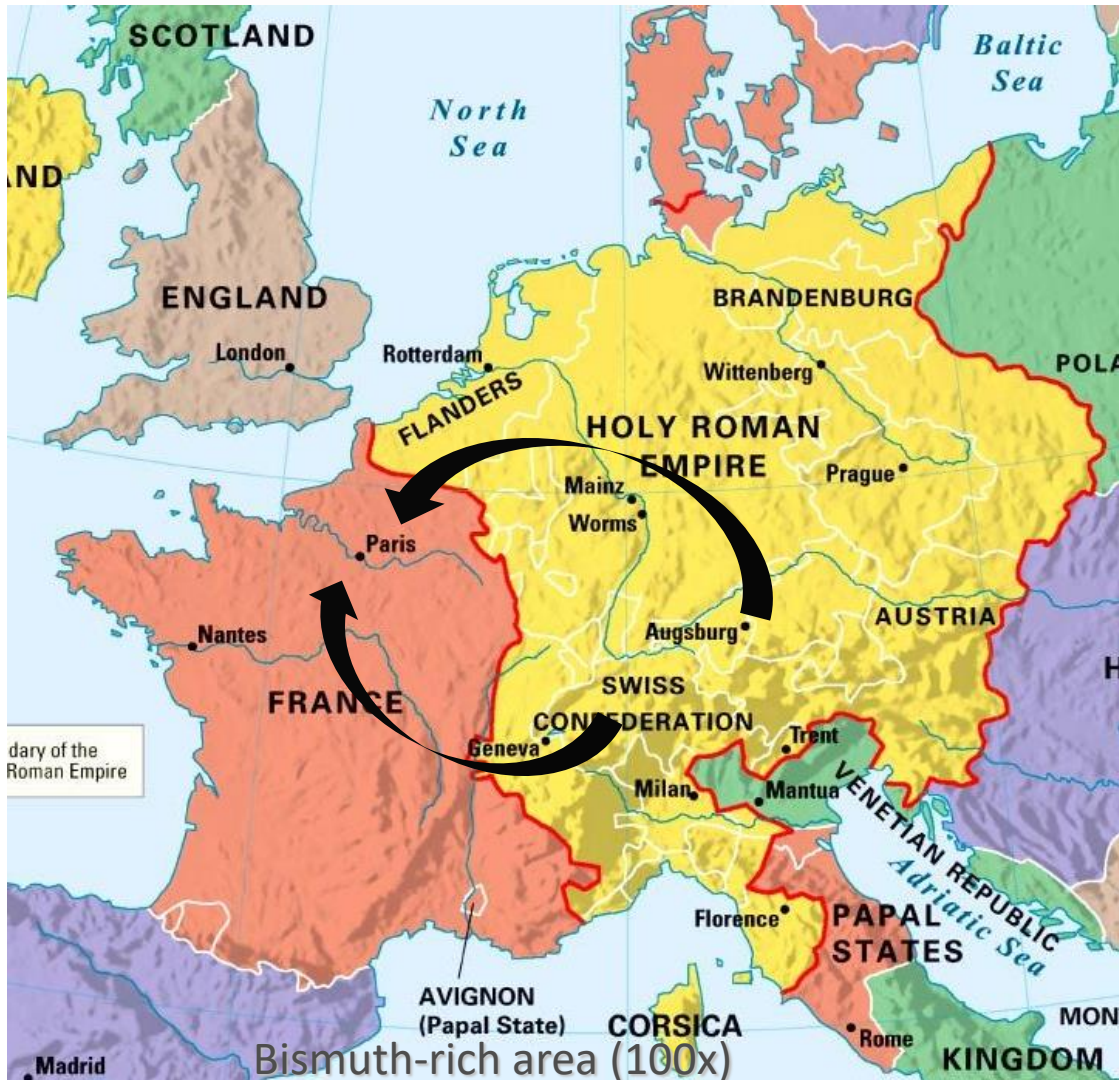


The Nativity



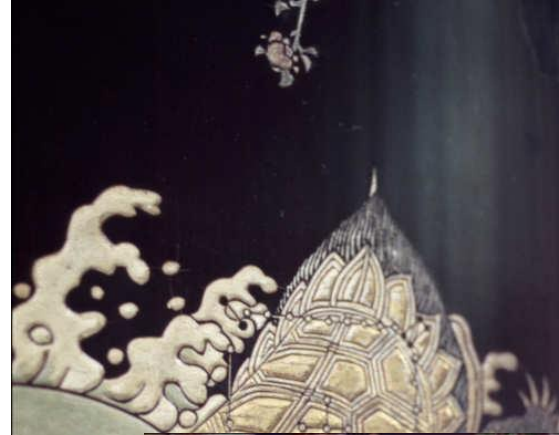
The Flight to Egypt

Trade routes: Jean Bourdichon

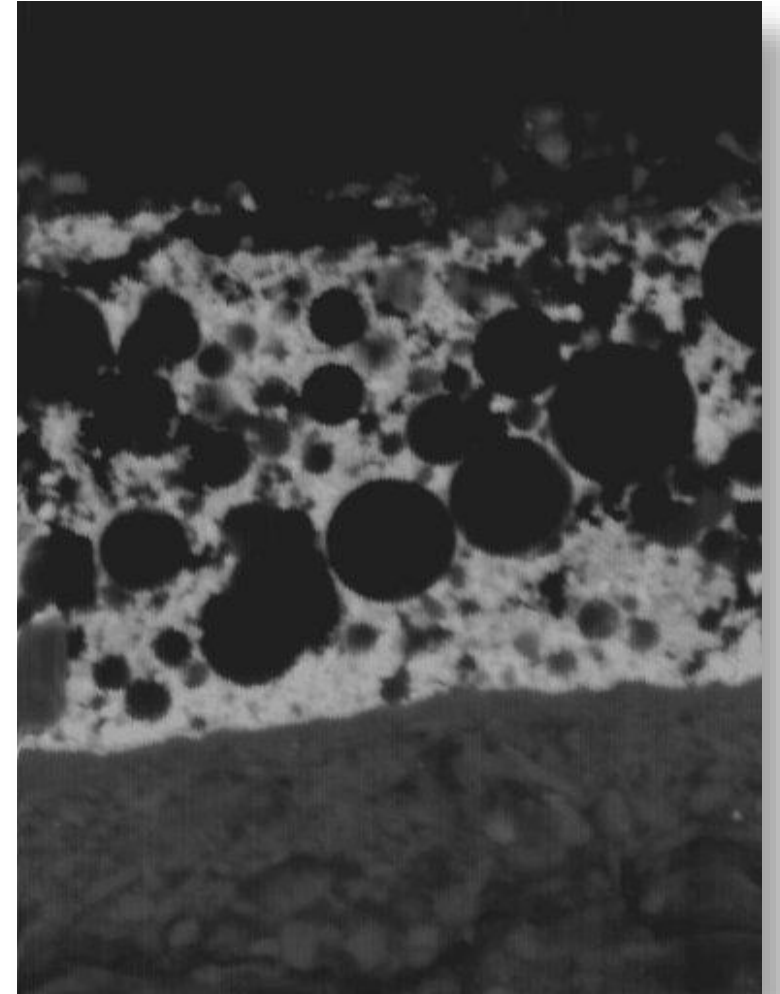
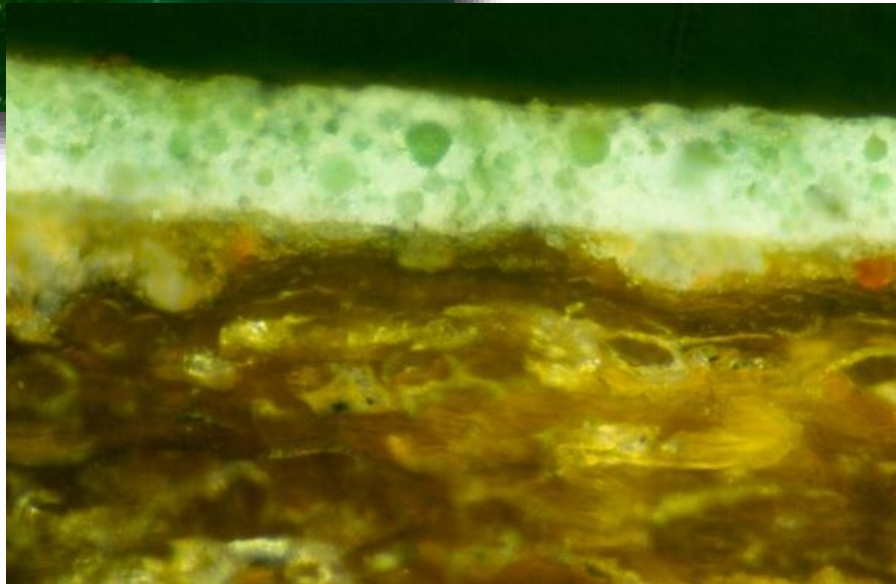
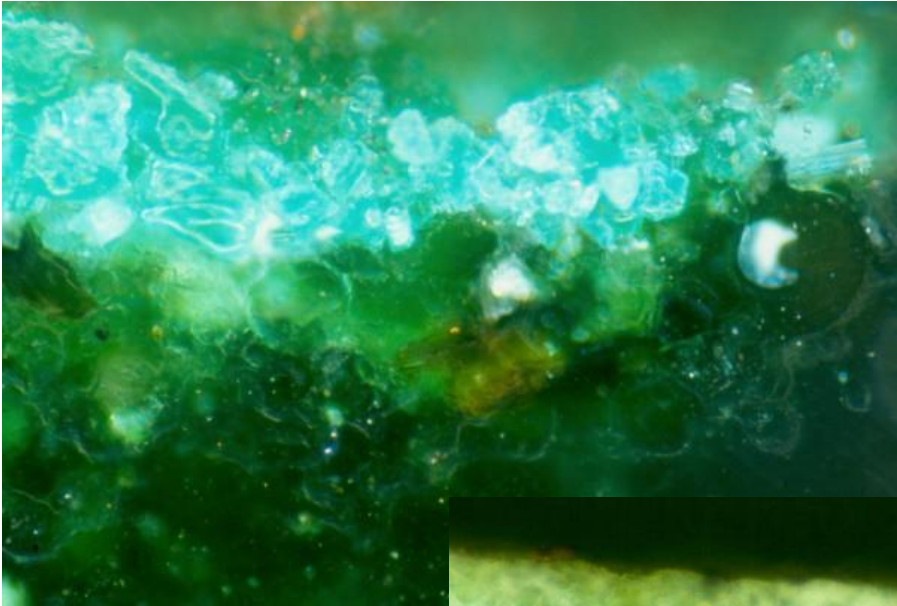


Bismuth particle
(800x)

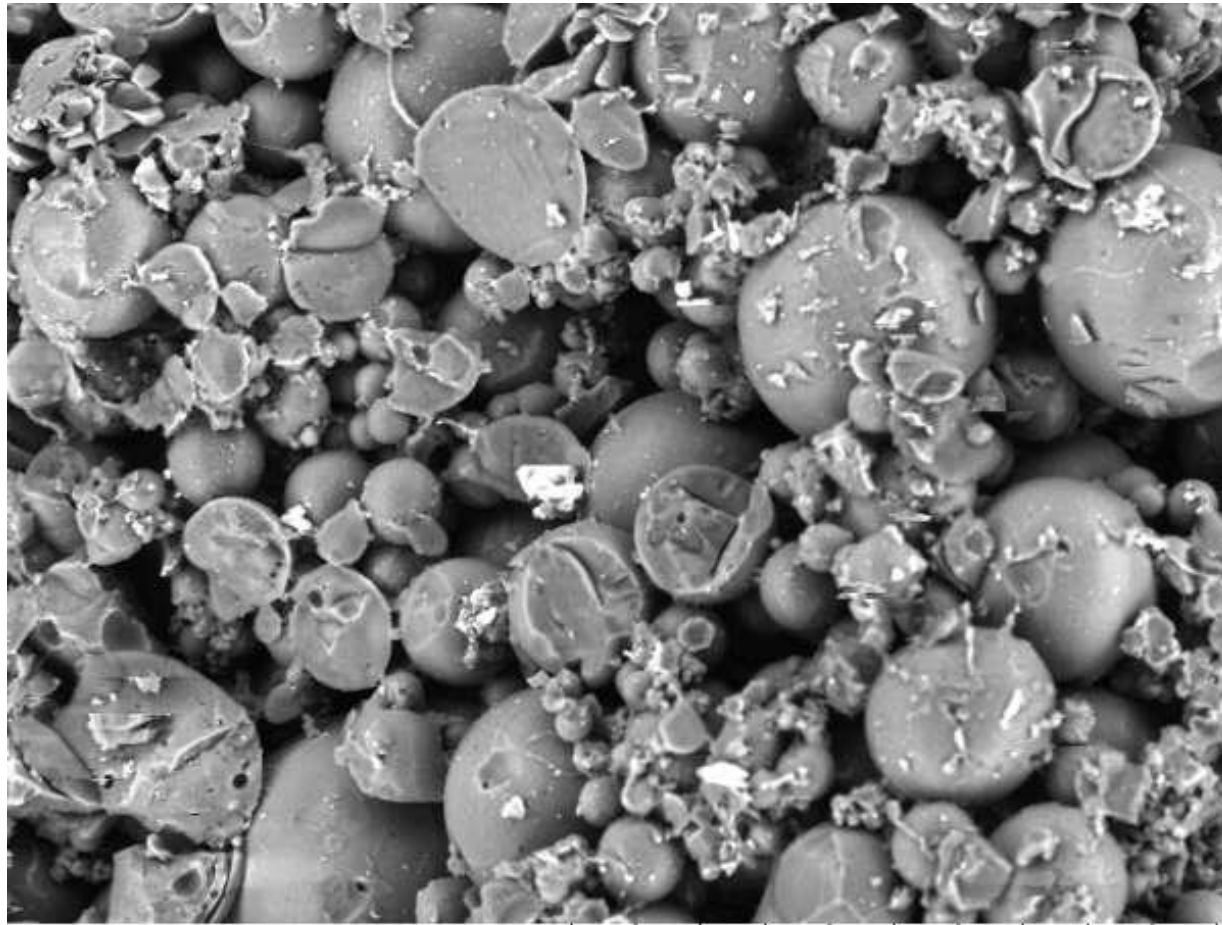
A 'new' pigment: spherical copper resinate



A 'new' pigment: spherical copper resinate



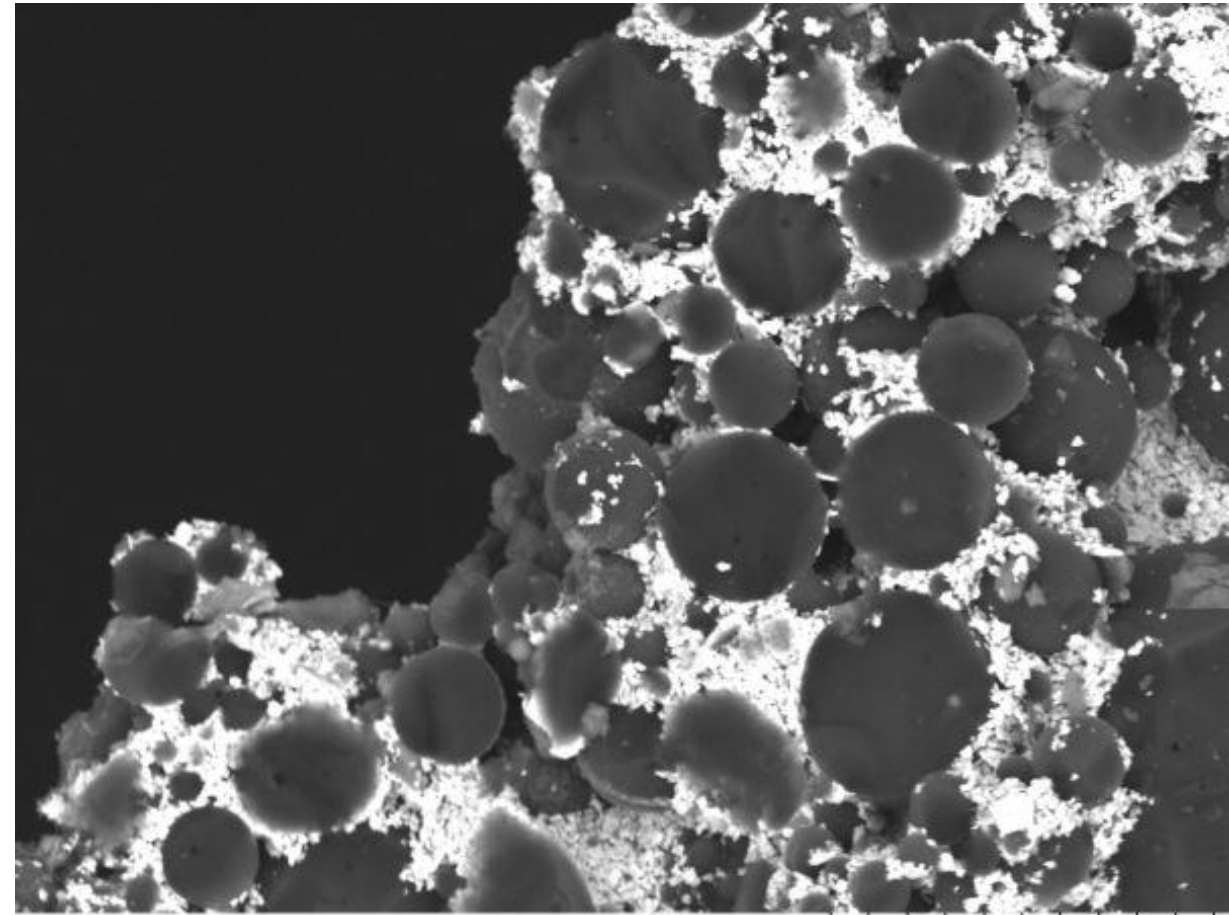
A 'new' pigment: spherical copper resinate



TM-1000

L

200 um



TM-1000

L

30 um

A 'new' pigment: spherical copper resinate



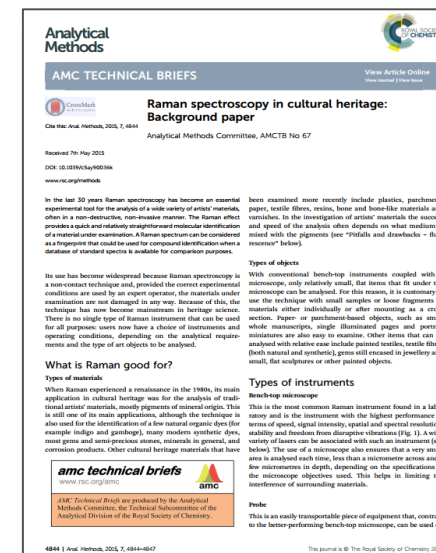
Want to know more?

Blog: www.vam.ac.uk/blog/author/lucia-burgio



The aim of the Heritage Science Expert Working Group is to promote the role and importance of analytical science in the cultural heritage sector. This involves improving the understanding of what each analysis method can deliver, and explaining the best approaches to data collection among other things.

Technical briefs



<https://www.rsc.org/Membership/Networking/InterestGroups/Analytical/AMC/Heritage-Science-sub-committee.asp>

With thanks to
IPERION-CH (MOLAB)
The National Gallery London
The Natural History Museum
The Institute of Archaeology, University College London

Thank you

Email: l.burgio@vam.ac.uk

Blog: www.vam.ac.uk/blog/author/lucia-burgio

