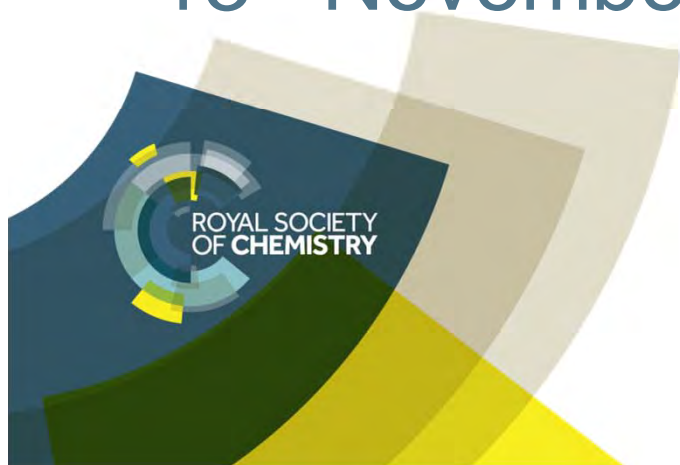


Member Engagement Event

Royal Society of Edinburgh,
13th November 2013



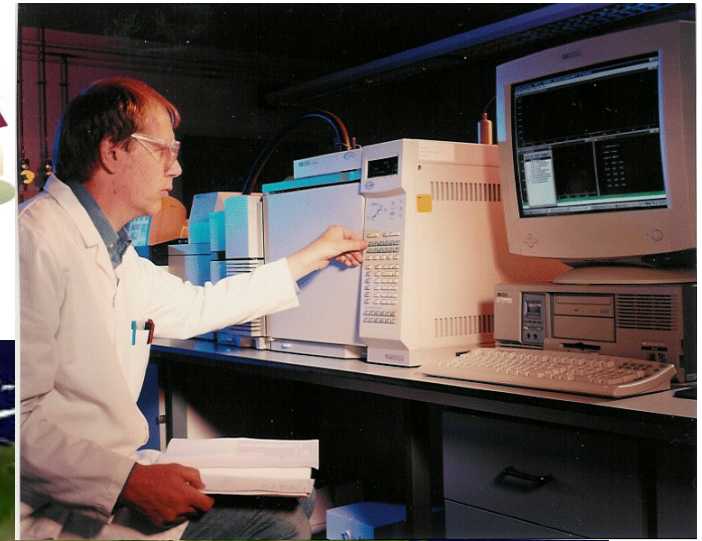


RSC Water Science Forum

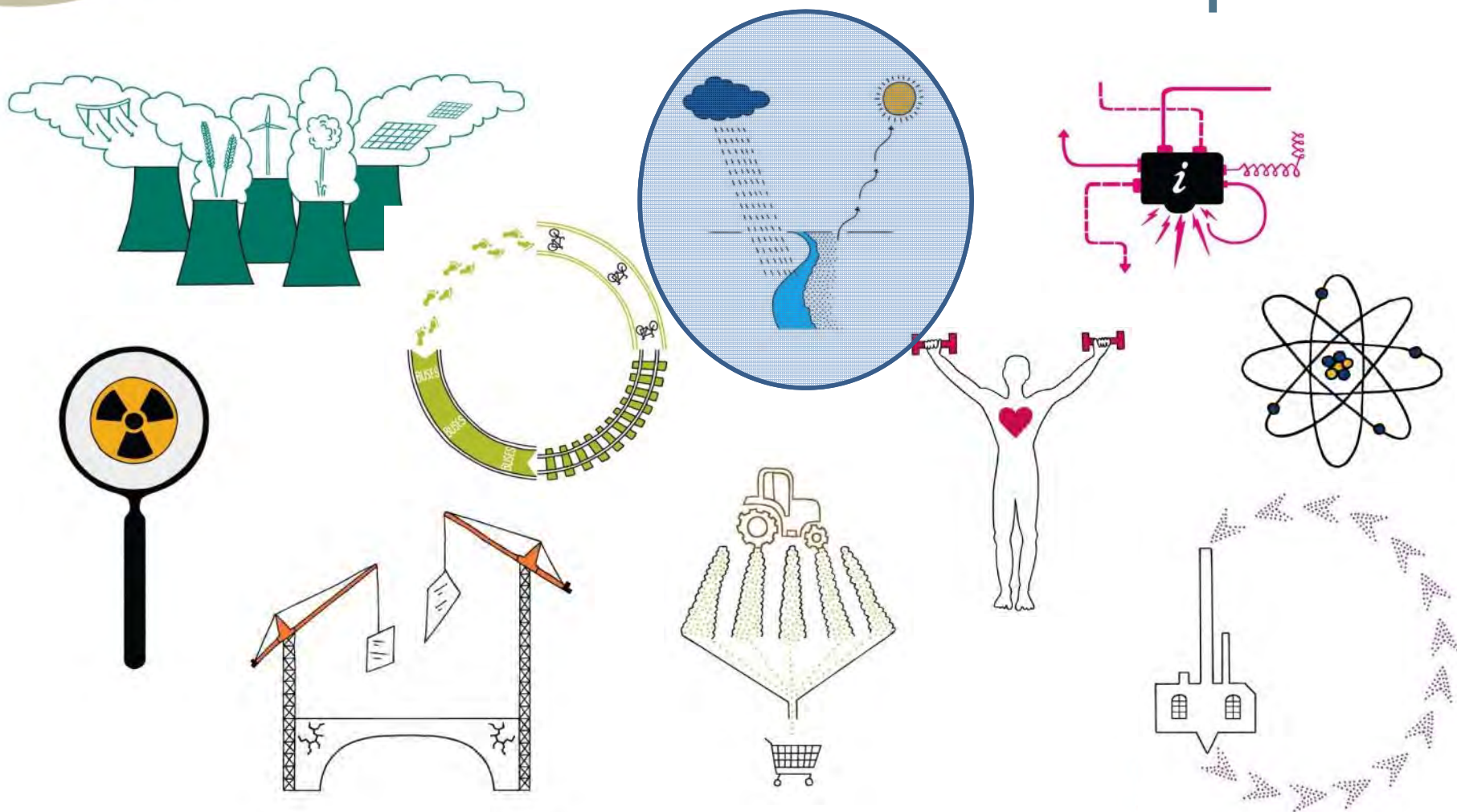
- Interest Group of the Royal Society of Chemistry
- World wide membership
- Members employed by:
 - Regulators
 - Utilities
 - Researchers
 - Water Sector companies:
(consultants, contractors, suppliers)



Who we are



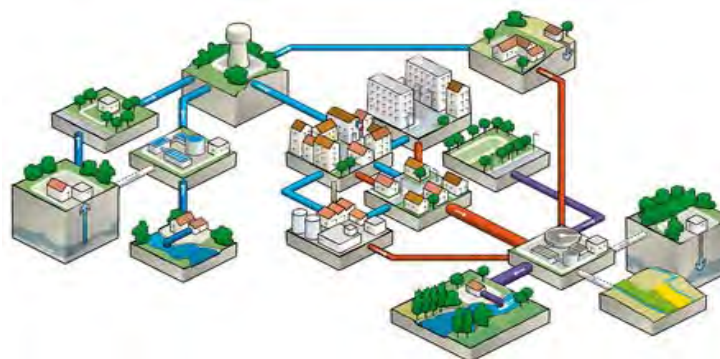
Chemical Science Roadmap





WSF Aims

To promote the professional and scientific interests of members and to advise on and influence, in the public interest, the application of chemistry in water-related industries.





WSF Objectives

- To keep members up-to-date with current developments within the water sector and to promote Continuous Professional Development.
- To provide a forum for the debate of professional and scientific matters on water-related issues within the RSC and other relevant organisations.
- To provide specialist technical advice on water-related issues to the RSC and to assist the RSC in presenting a corporate view to national and local government on matter of interest to WSF members.
- To promote research, education and specialised training in all aspects of water-related chemistry, including relevant chartered status for members





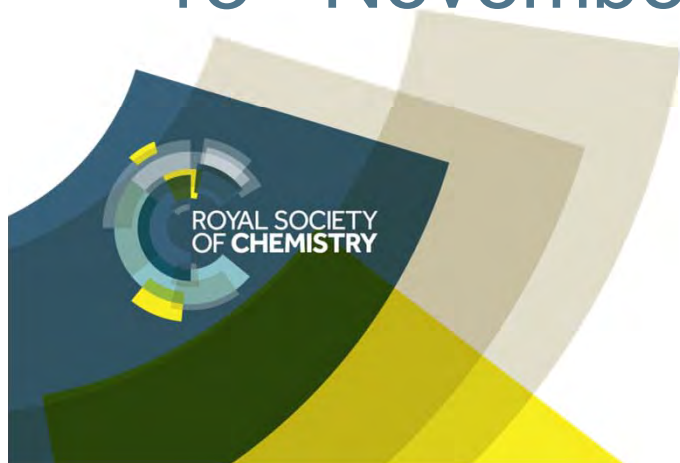
WSF Activities

- Bursaries & Awards
- Conferences
 - Radiological Protection in the Water Industry, Protecting Water Catchments from Diffuse Pollution,
 - International Meeting on Mercury as a Global Pollutant
 - Indo-UK Perspective on Water Quality: Threats, Technologies and Options workshop
- House of Commons Science & Technology Committee inquiry on Water Quality
- Science in Parliament (Scotland)
- Briefing Papers and educational material
- Involved in UK, EU (CEN) & ISO standards development



Member Engagement Event

Royal Society of Edinburgh,
13th November 2013



A brief introduction to CPD

What is CPD?

Continuing professional development is:

“..... the responsibility of individuals for the systematic maintenance, improvement and broadening of knowledge and skills to ensure continuing competence as a professional throughout their career”.

Developing and maintaining a CPD portfolio is an absolute requirement for CChem and CSci



Chartered Chemist professional attributes

- 1. Make significant personal contributions to key tasks in your employment area and understand fully the chemistry objectives of the work done and its relevance to the employer or others.*
- 2. Demonstrate a high level of appropriate professional skills in the practice of chemistry.*
- 3. Develop your chemistry and other professional skills as required for the work undertaken and career development.*
- 4. Demonstrate an understanding and appreciation of Health, Safety and Environmental issues and adhere to the relevant requirements relating to your role.*
- 5. Evaluate critically and draw conclusions from scientific and other data.*
- 6. Demonstrate integrity and respect for confidentiality on work and personal issues. Demonstrate other professional attributes such as thoroughness and reliability.*

Chartered Chemist professional attributes

- 7. Plan and organise time systematically, demonstrate foresight in carrying out tasks, and offer suggestions for improvements to tasks/duties*
- 8. Demonstrate an interest in broader developments in chemical science and make a contribution to the profession of chemistry outside your direct work environment*
- 9. Write clear, concise and orderly documents and give clear oral presentations*
- 10. Discuss work convincingly and objectively with colleagues, customers and others. Respond constructively to, and acknowledge the value of, alternative views and hypotheses*
- 11. Demonstrate the ability to work as part of a team*
- 12. Exert effective influence*

Water Industry Laboratory requirements

Drinking Water Inspectorate (DWI) Information Letter requires:

Competent Persons: Maintain a CPD portfolio demonstrating competence against a cut down list of 9 professional attributes

Competent Technical and Quality management: Must be Chartered and maintain a CPD portfolio demonstrating competence against the 12 CChem attributes plus four others:

Demonstrate a commitment to continued learning and development

Demonstrate a high level of understanding of the principles and practice of analytical quality control

Demonstrate competence in staff management and if relevant contract management

Plan the operation and continuing maintenance of new systems and services

ROYAL SOCIETY
OF CHEMISTS

Some typical CPD activities

- Designing experiments
- Developing/validating analytical methods
- Report writing (journal papers)
- Preparing CoSHH and Risk Assessments
- Participation in technical and H&S committees
- Training courses (trainer and trainee)
- Conferences and seminars – attendance and presentation
- Relevant volunteering activities - STEM
- Participation in local RSC and other professional society meetings
- Self-study courses
- Purchase and commissioning of new equipment
- Performance management of staff



Role of the RSC and WSF

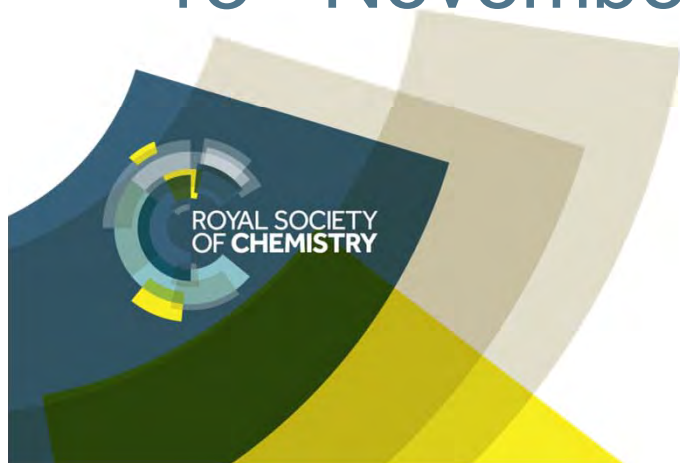
- Attendance at WSF seminars “ticks the box” against a number of the professional competencies required for CChem and CSci
- WSF are organising a specific water industry CPD seminar in 2014 with the aim of clarifying and standardising appropriate CPD activity to meet regulatory requirements
- RSC runs specific CPD activities for teachers and other professionals

• RSC has a CPD recording tool available for use by members



Member Engagement Event

Royal Society of Edinburgh,
13th November 2013



Bursaries and Awards



Alan Tetlow Memorial Bursary

- to help encourage early career chemists (during the first 10 years of their career) and those returning to work after a career break to develop their professional career. Awards of up to £2,000 per year are available.
 - not more than 50% of the agreed cost
- Members can apply for financial assistance to advance their career in relation to the following activities, to:
 - Attend conferences for the purpose of presenting a poster or paper
 - Attend research meetings (including young researcher meetings)
 - Visit UK or international laboratories
 - Complete training courses; and
 - Assist in research relating to water science projects in general
- Please note that activities are not restricted to these activities only. However, the activity needs to contain a high proportion of water related chemical science which contributes to water sustainability (environment, economic, social) and have an identifiable practical application

<http://www.rsc.org/Membership/Networking/InterestGroups/WaterScience/bursaries.asp>






Developing Water Science Bursary

- To support water science research in specific topic areas.
- The 2013 Water Science Bursary is for research projects examining this Water for Food area. Awards of up to £2,000 per year are available in relation to the following activities:
 - Water for Food research projects including MSc thesis projects
 - Short sabbatical periods to complete relevant research
 - Assistance in Water for Food research projects.
- The funds are available to assist MSc students or students on other career development routes including those who have no formal higher qualifications (degree, HND).
- This award may also be particularly relevant to members aiming to achieve Registered Science Technician (RSciTech) or Registered Scientist (RSci) status.
- In addition early stage chemists (during the first 10 years of their career) and those returning to work after a career break to develop their career are particularly encouraged to apply.

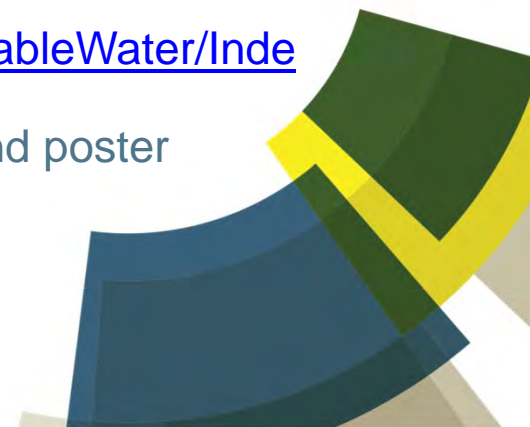
<http://www.rsc.org/Membership/Networking/InterestGroups/WaterScience/bursaries.asp>





Sustainable Water Award

- The Sustainable Water award is for the contributions of chemical sciences to equitable water supply.
 - Holistic approaches will consider water and waste-water availability, movement, treatment, use and re-use and, with the increasing cost of energy resources, the importance of water-energy-food nexus will be pivotal in helping to improve water sustainability. The award will be given for significant contribution to this objective.
- Award winner receives **£2000**, a medal and a certificate
- Open to everyone without restrictions
- Nominations open **1st September 2013**
- Nominations close **15th January 2014**
- Winner chosen by Environment, Sustainability and Energy Division Awards Committee
- <http://www.rsc.org/ScienceAndTechnology/Awards/SustainableWater/Index.asp>
- WSF also make awards and prizes for oral contributions and poster submissions at Conferences it sponsors and organises



Member Engagement Event

Royal Society of Edinburgh,
13th November 2013



Event organisation and sponsorship

What type of event?

- Member engagement events
- Half day or one day seminars on burning issues run throughout the UK
- Single or multi-themed technical conferences with relevance to water science – UK or International



Involvement on different levels

- Financially liable sponsor – WSF may sponsor an event jointly or alone and share in the surplus (or loss), if any
- May badge event and be on the organising committee without financial liability
- May take an exhibition stand to publicise RSC and WSF
- Awards – WSF may sponsor an event with a water science theme through a poster or paper award



Recent and upcoming events

Date	Title	Venue
May 2013	SETAC	Glasgow
July 2013	The 11th ICMGP International Conference on Mercury as a Global Pollutant	Edinburgh
September 2013	16 th International Conference on the Properties of water & steam	Greenwich
November 2013	Member Engagement Event	RSE Edinburgh
November 2013	Science in Parliament	Our Dynamic Earth
October 2014	Disinfection By-products	Mulheim
2014	Diffuse Urban Pollution	London
2014	Agricultural and Water	tbc
2014	CPD event	tbc

First announcement and call for papers



DBP 2014

Disinfection By-products in drinking water

27th-29th October 2014

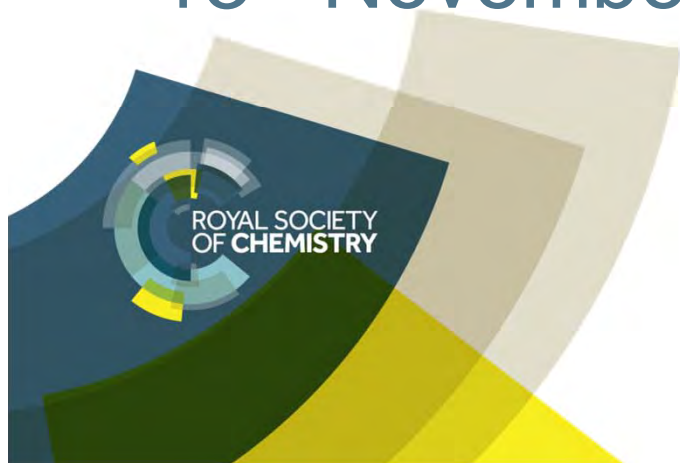
Municipal Hall, Mülheim an der Ruhr, Germany

www.DBP2014.eu



Member Engagement Event

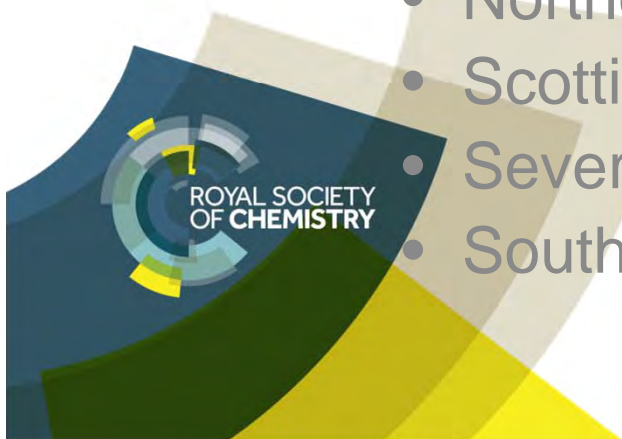
Royal Society of Edinburgh,
13th November 2013



Membership

OUR Community

- >700 members, 30 countries
- Wider network within RSC
- Close links with industry and academia
- Water Sector Corporate Partners
 - Affinity Water Ltd,
 - Alcontrol Labs
 - Northumbrian Water
 - Northern Ireland Water
 - Scottish Water
 - Severn Trent - Analytical Services
 - South East Water



RSC Water Science ForumGroup Statistics 22nd February 2012

Total number of members = 723

RSC Member Type

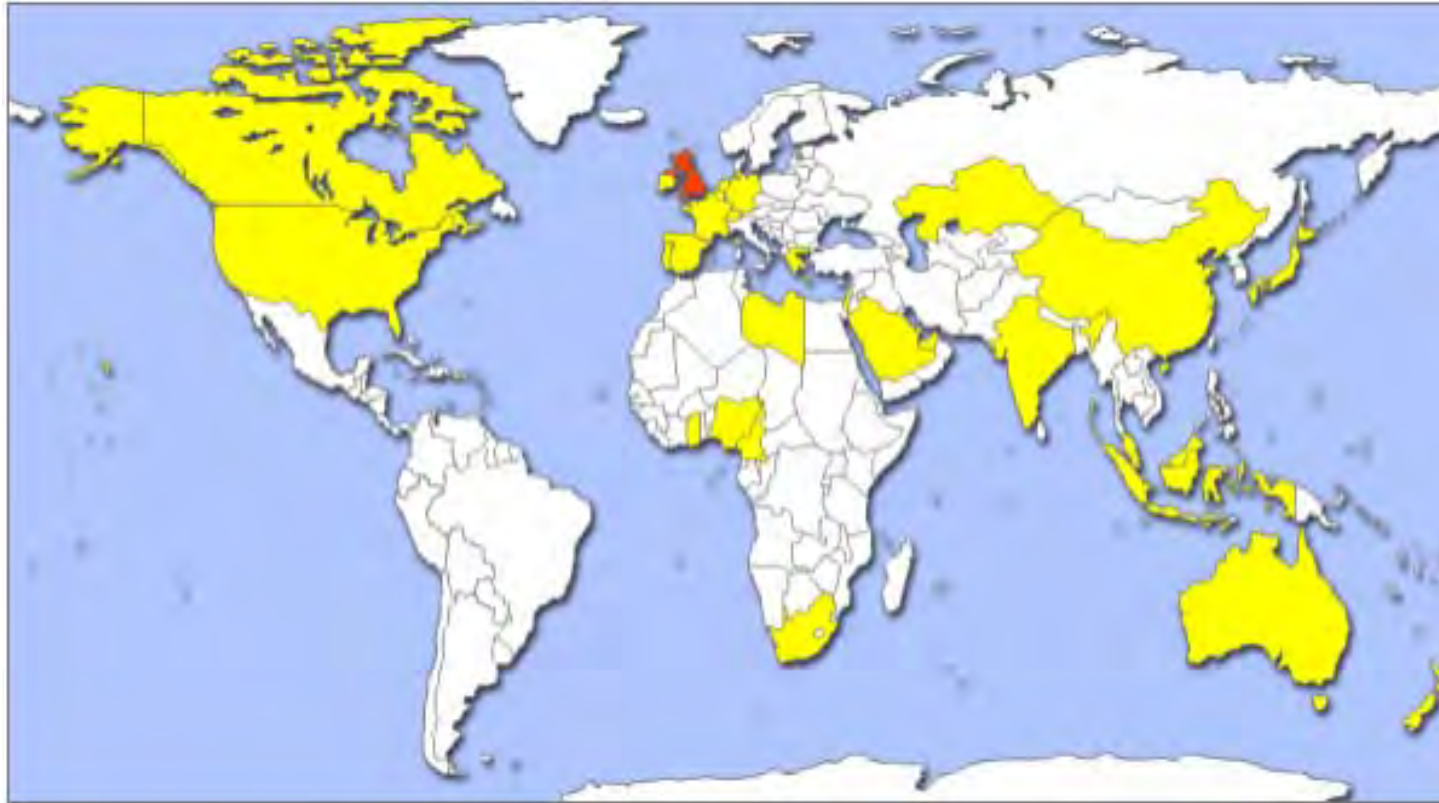


Overlap with Other Interest Groups

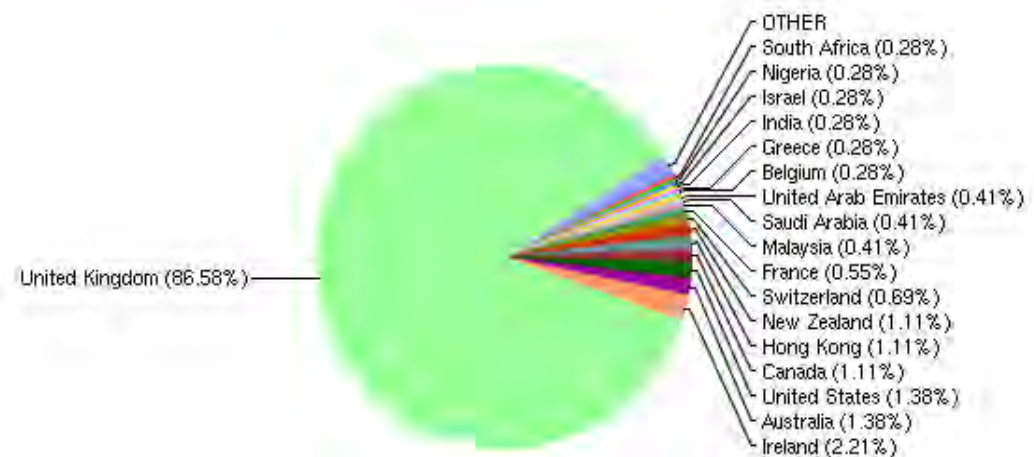
Interest Groups	Number of Shared Members
Agriculture Sector	23
Energy Sector	94
Environmental Chemistry	337
Food Group	36
International Network of Environmental Forensics	17
Joint Pharmaceutical Analysis Group	12
Toxicology Group	70



We are not just UK!!



Colour	Individuals	Number of Regions
	0	212
Yellow	1 - 156	31
Orange	157 - 313	0
Dark Orange	314 - 469	0
Red	470 - 626	1



Code	Job Type	Number of Members
00	Not Known	50
T01	Research	52
T02	Development	20
T03	Production	13
T04	Quality Assurance/Control	40
T05	Analysis	54
T06	Health and Safety	11
T07	Environmental Monitoring	51
T08	Sales and Marketing	0
T09	Commercial/Financial	1
T10	Human Resources	0
T11	Computer Systems	3
T12	General Administration	3
T13	General Management	74
T25	Academic	34
T26	Technician	0
T27	Teacher	3
T35	Undergraduate	0
T36	Postgraduate	18
T45	Consultant	81

Want to join us!

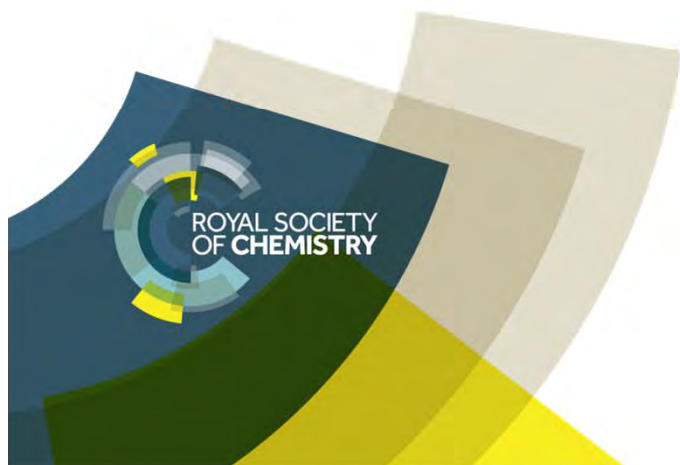
Then find out more at:

<http://www.rsc.org/Membership/Networking/InterestGroups/WaterScience/>

http://www.rsc.org/images/WaterAppForm_tcm18-221447.pdf

Fill in application form (I have some with me!!)

Membership is open to professional, associate and affiliate members of RSC. The cost is £10 per year although can be taken at no additional cost as one of the three free interest group memberships included in the annual RSC subscription fee.



RSC- WSF Committee

Our Current committee has all members from all different backgrounds:

Regulators/ Environment Agencies/ Consultants/
Academia/ Retired members/ Student Rep etc

**We are always keen to recruit new members to the
Committee!!**

Especially if your field of interest is concerned with new and emerging technologies, or if you feel an area is ignored!!

We want to hear from YOU
AND we are particular keen to have more young people join us!



Please contact any one of us here today or the WSF
Hon. Secretary If you would like to join our committee

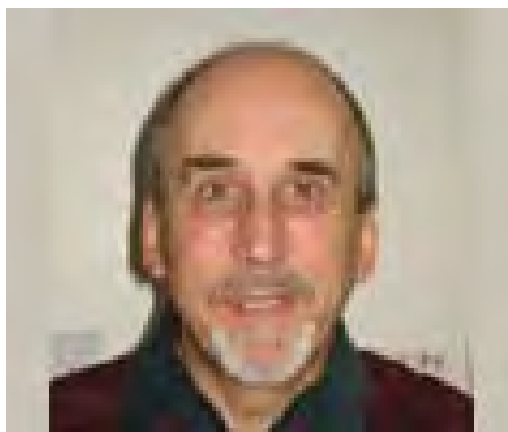
Contact and Further Information

Membership Department

Thomas Graham House, Science Park, Milton Road,
Cambridge, CB4 0WF

Tel: +44 (0) 1223 432 141

Email: [Membership Department](#)



Dr Roger Wellings FRSC

Secretary

Email: [Dr Roger Wellings FRSC](#)



Thank You we hope this event was both interesting and informative



Kevin Prior Chair kevin@thackie.co.uk

Helen Keenan Vice Chair h.e.keenan@strath.ac.uk

Simon Gillespie Member simon.gillespie@scottishwater.co.uk