

Working With Nature

integrating...



Nestlé and its partners

&



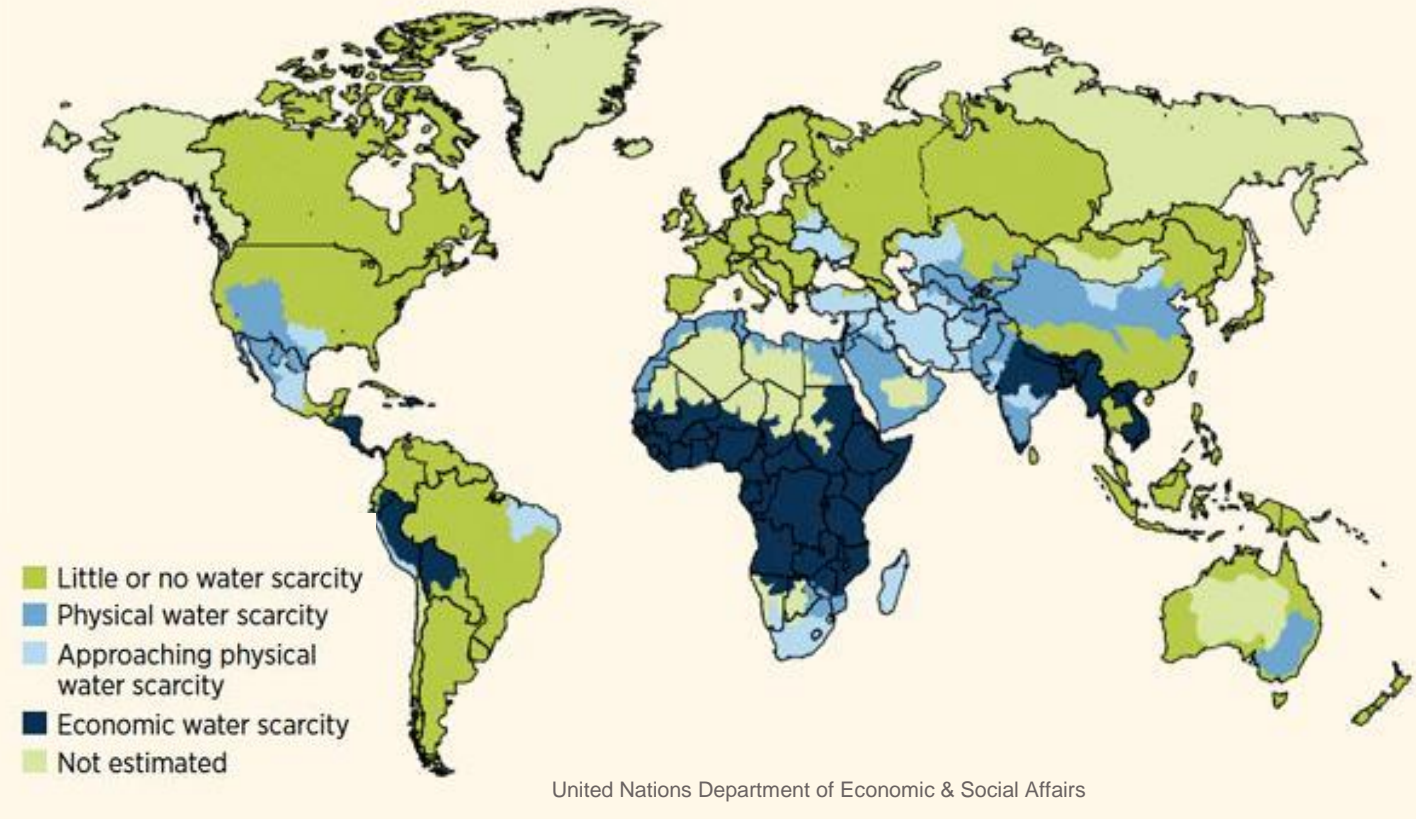
Creating Business Value from Healthy Landscapes...

...driving investment in healthy landscapes by mobilising their value to business



Water is a critical global sustainability issue

Global physical and economic water scarcity

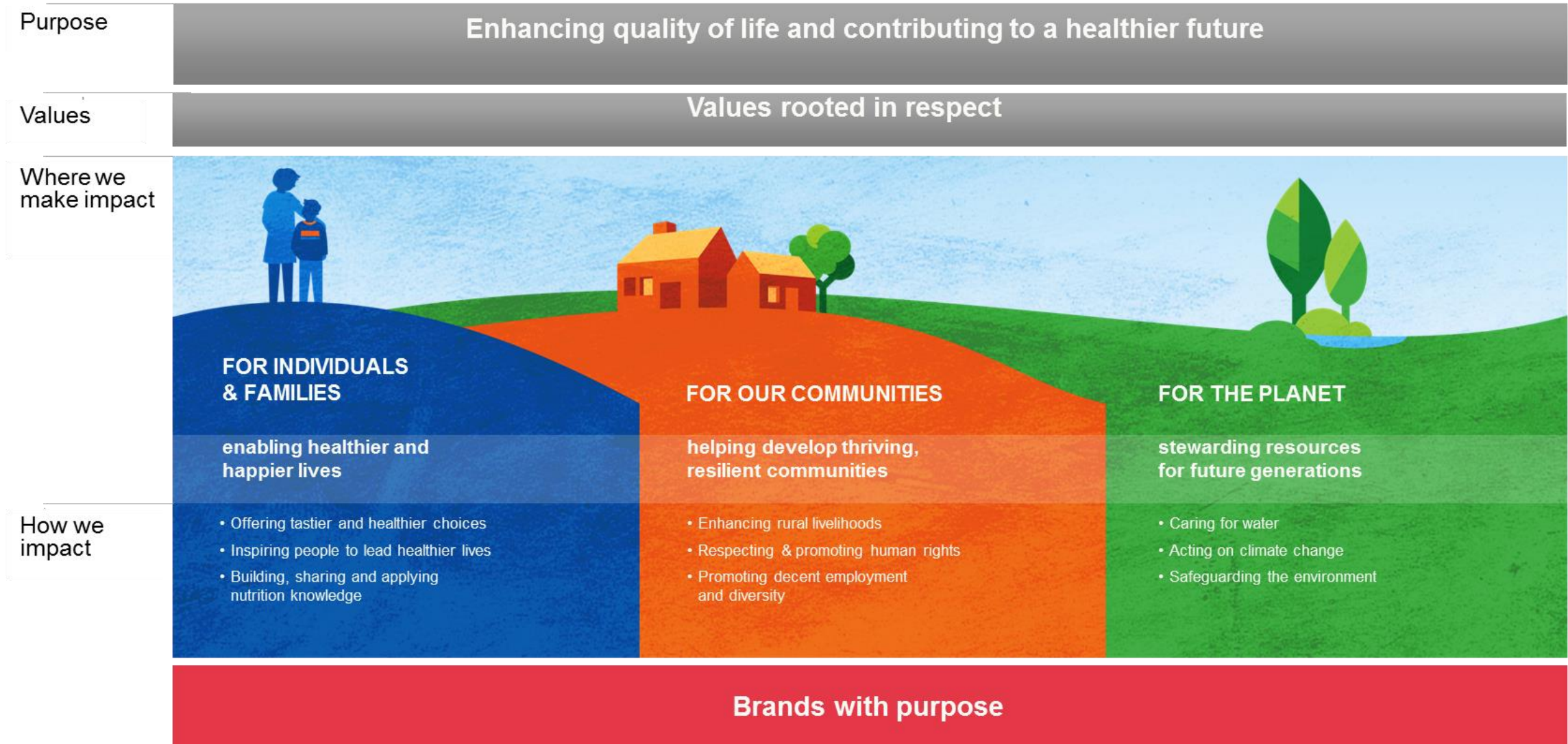


Today, **663 million people** lack access to water.

By 2030, demand for water will exceed supply by **40%**.

According to the United Nations **better water management is key to adapting to climate change**, and businesses have a role to play in promoting this.

Our Purpose & Values



Our beliefs

Water is essential for life.

- As individuals, we need water for healthy hydration.
- Communities need access to water to thrive.
- We need to preserve water for agriculture, food production and consumption.

Water is essential for our business.

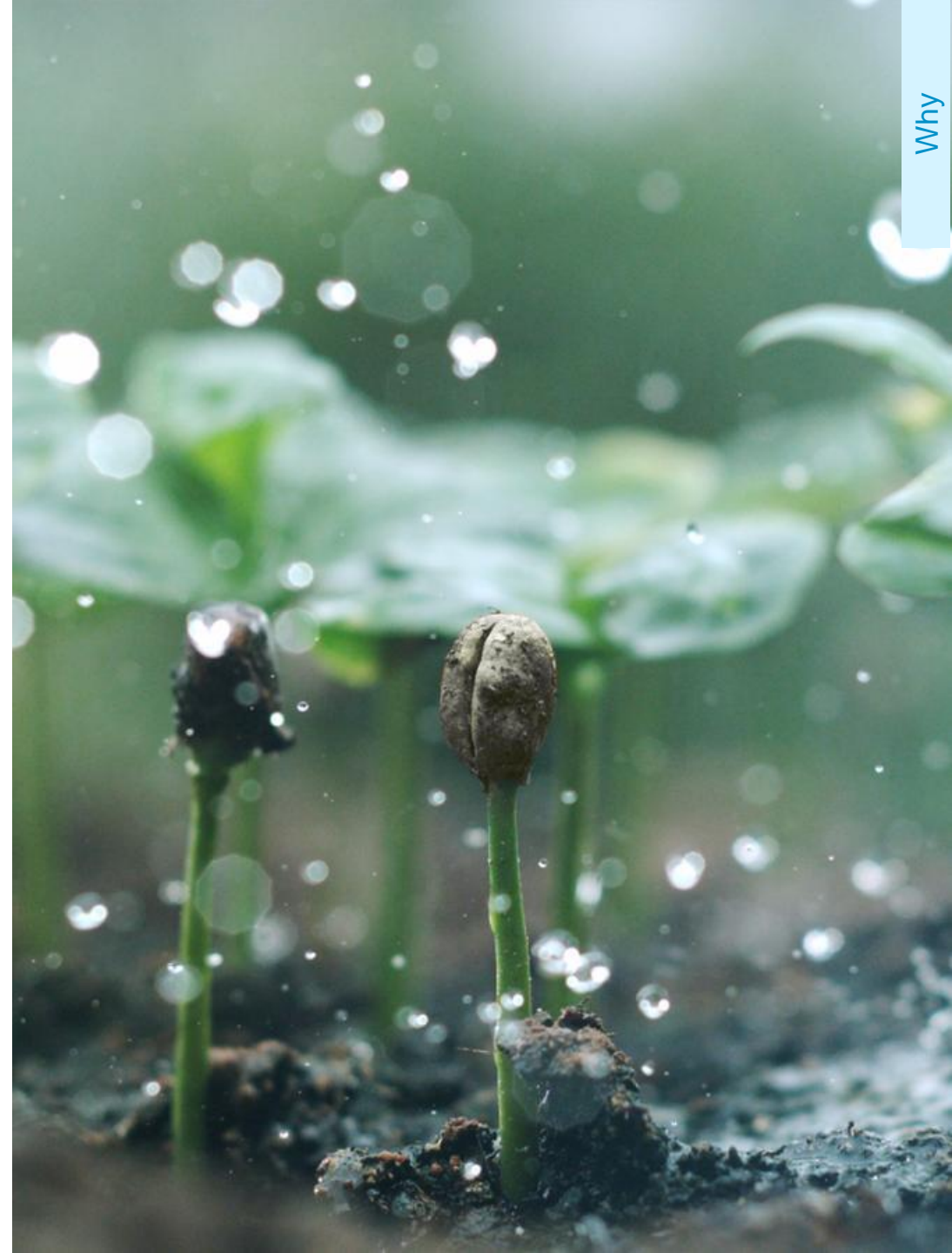
- We need water to run our factories.
- Ingredients we source need water to grow.
- Nestlé Waters needs water to operate and to grow.
- Consumers need water to prepare our products

Access to water is a basic human right

- Everyone, everywhere should have access to water

Water is a shared and precious resource

- We need to manage it sustainably together with all users. This is water stewardship





caring
for
water

Nestlé and its partners

A clear and aligned approach: water stewardship at local level

- A clear scope to act **where it matters locally**:
 - in our factories;
 - in the communities around them that share the same watershed;
 - in the agricultural supply chain connected to our business.
- A model to **assess risks**, act where it matters, achieve and report results.



Our focus areas

COMMUNITIES

Providing access to water and sanitation



FACTORIES

Doing more to reduce, reuse, and recycle water



WATERSHEDS

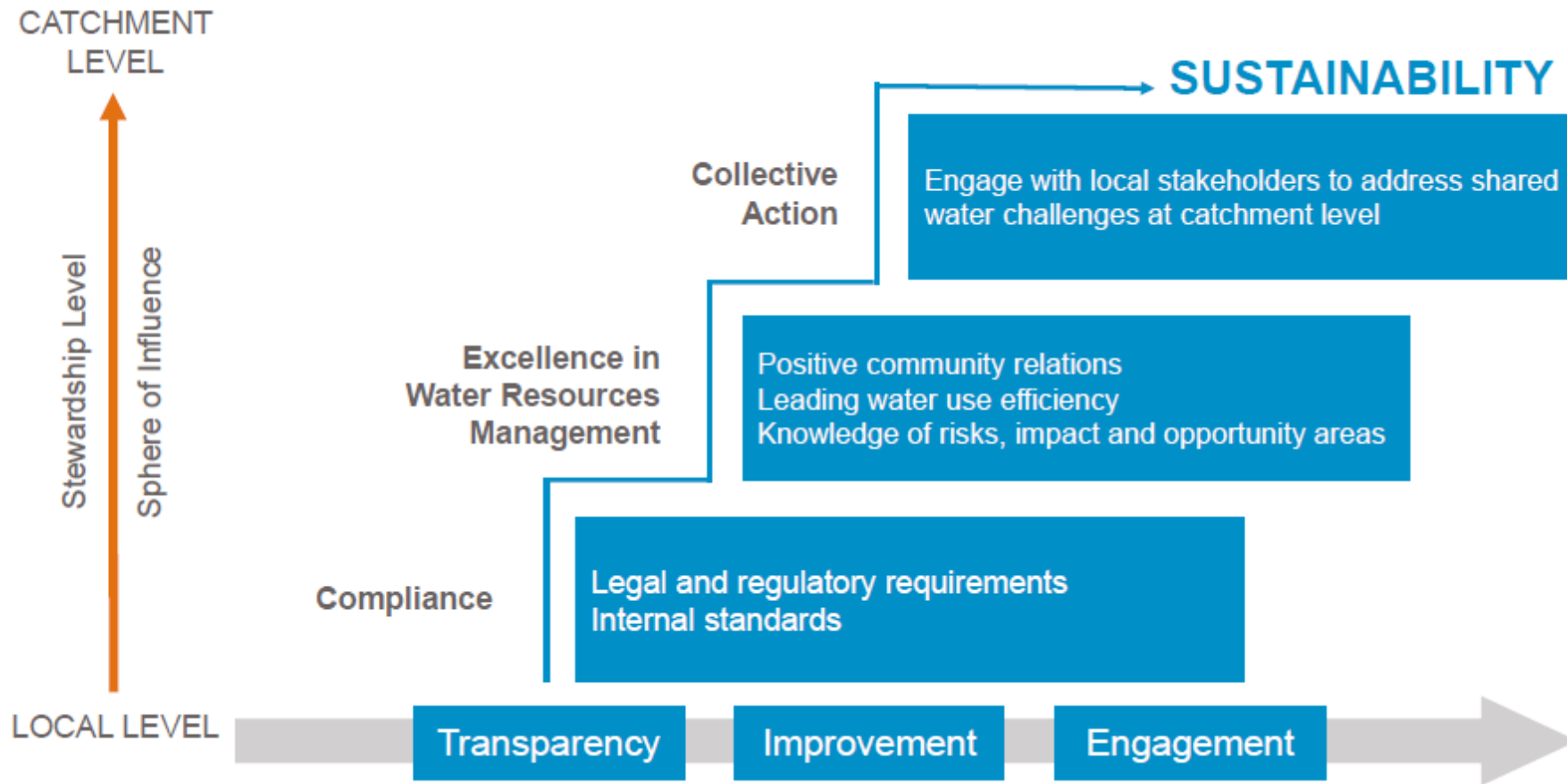
Working with partners to preserve shared water resources



AGRICULTURAL SUPPLY CHAIN

Helping farmers to improve water management practices

Our water stewardship ladder



Water resources management

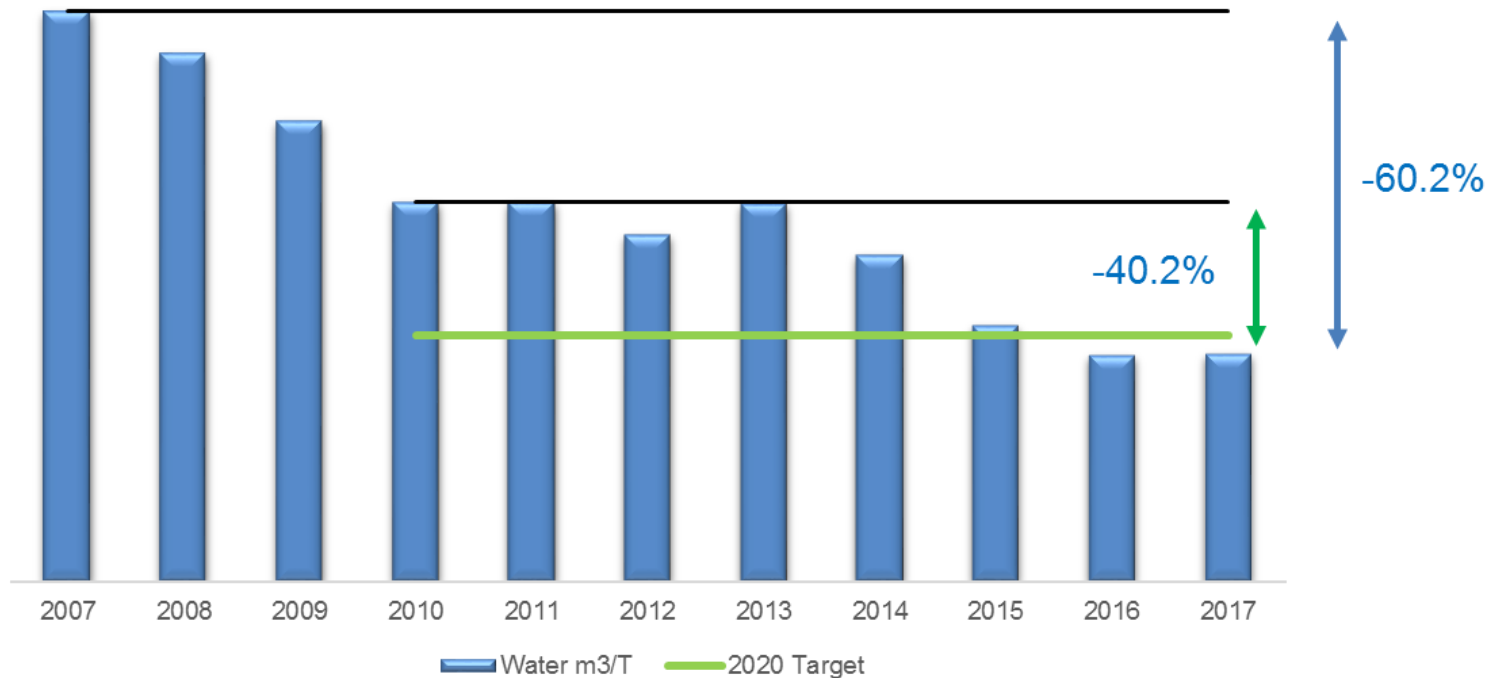


Globally:

38.1%

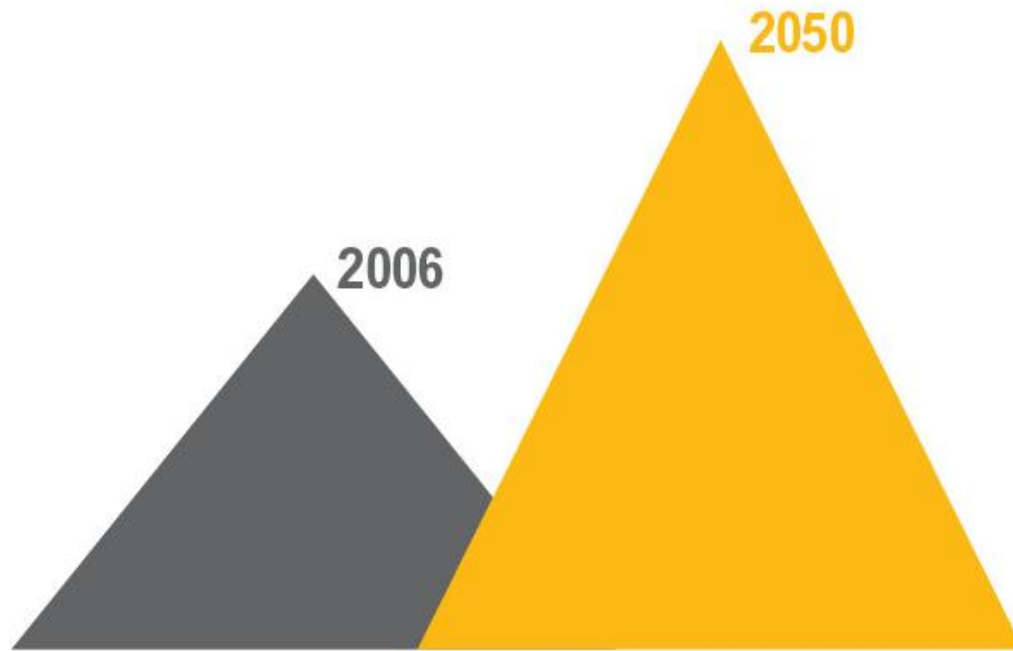
reduction in our water withdrawals per tonne of product since 2007

In the UK&I:



Zero River Water Abstraction - 2018

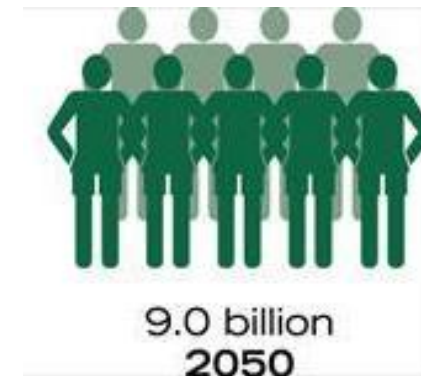
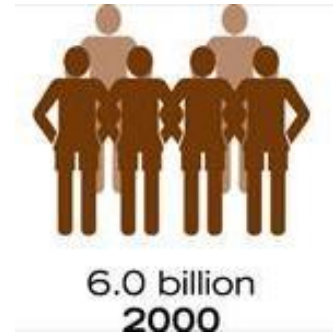
However, food availability is also crucial



69%

Required increase
in food calories
to feed 9.6 billion
people by 2050

 WORLD RESOURCES INSTITUTE



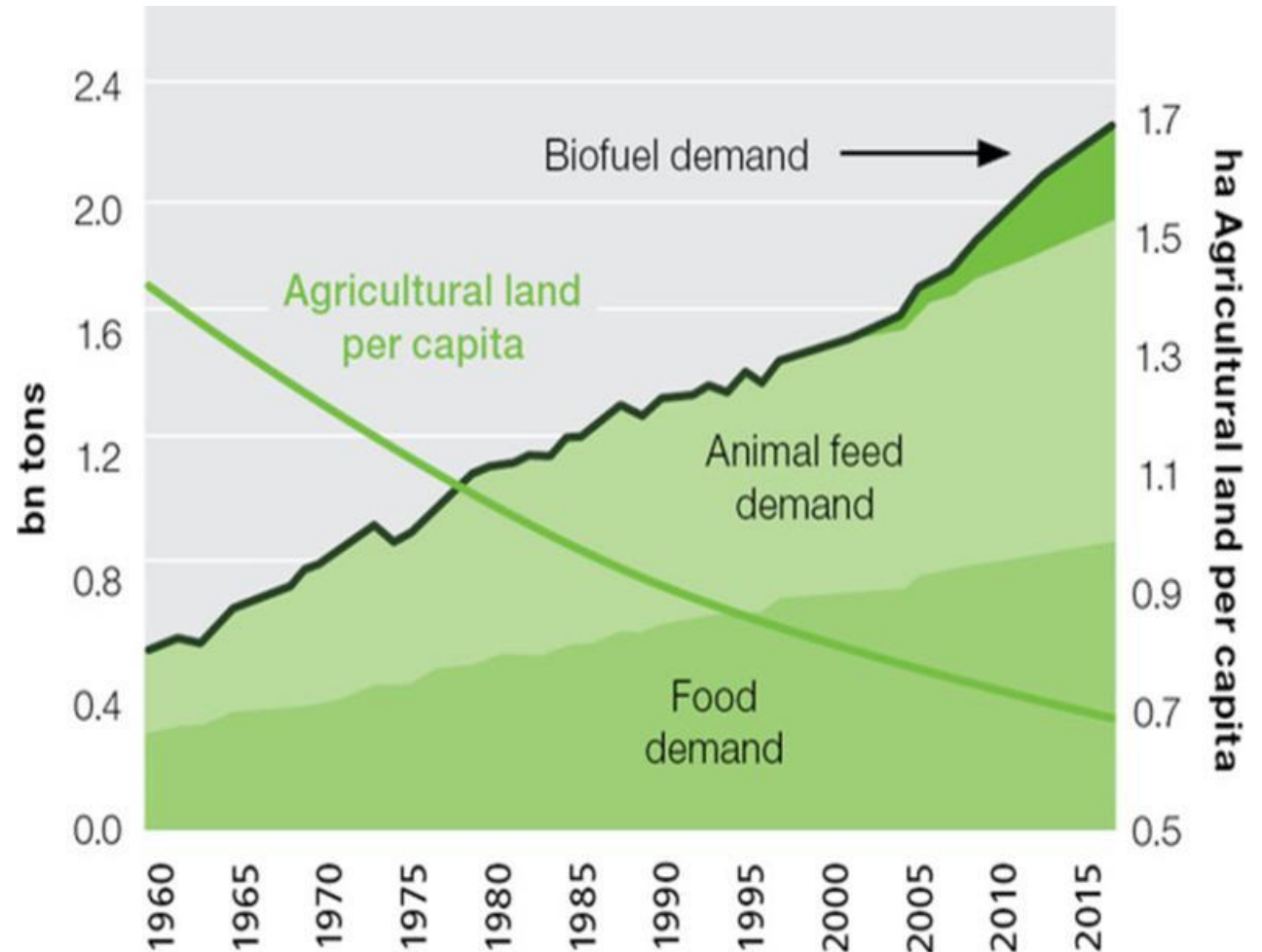
...with the associated pressures



 **70%**
of
WATER CONSUMPTION

 **34.3%**
of
LAND AREA

 **17-30%**
of
GHG EMISSIONS



Working With Nature:



a shared interest approach to
sustainable land management

The resources we focus on

*Our global
priority resources*



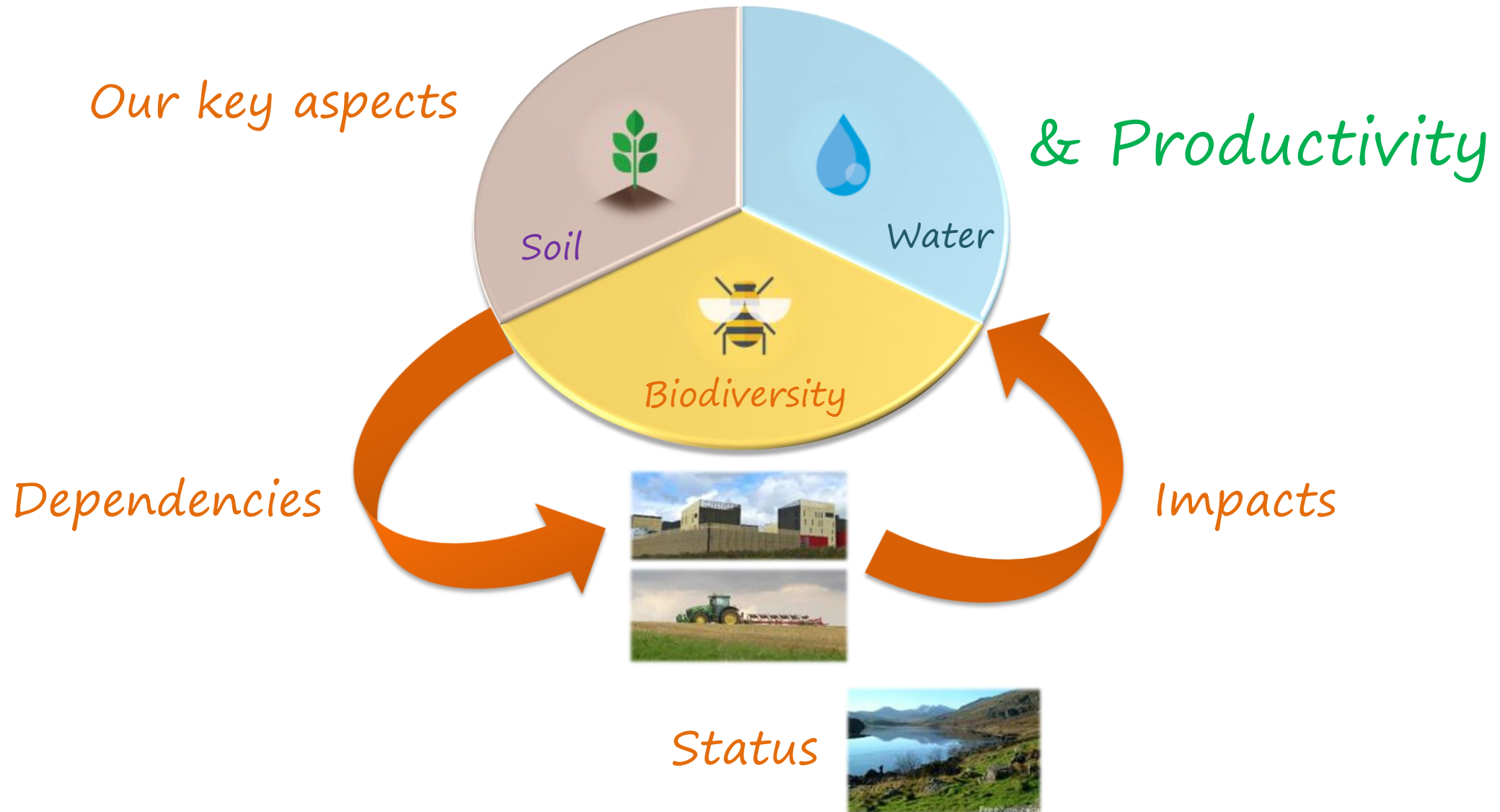
What do we source from the UK?



*Our 'Working With Nature'
priority resources*



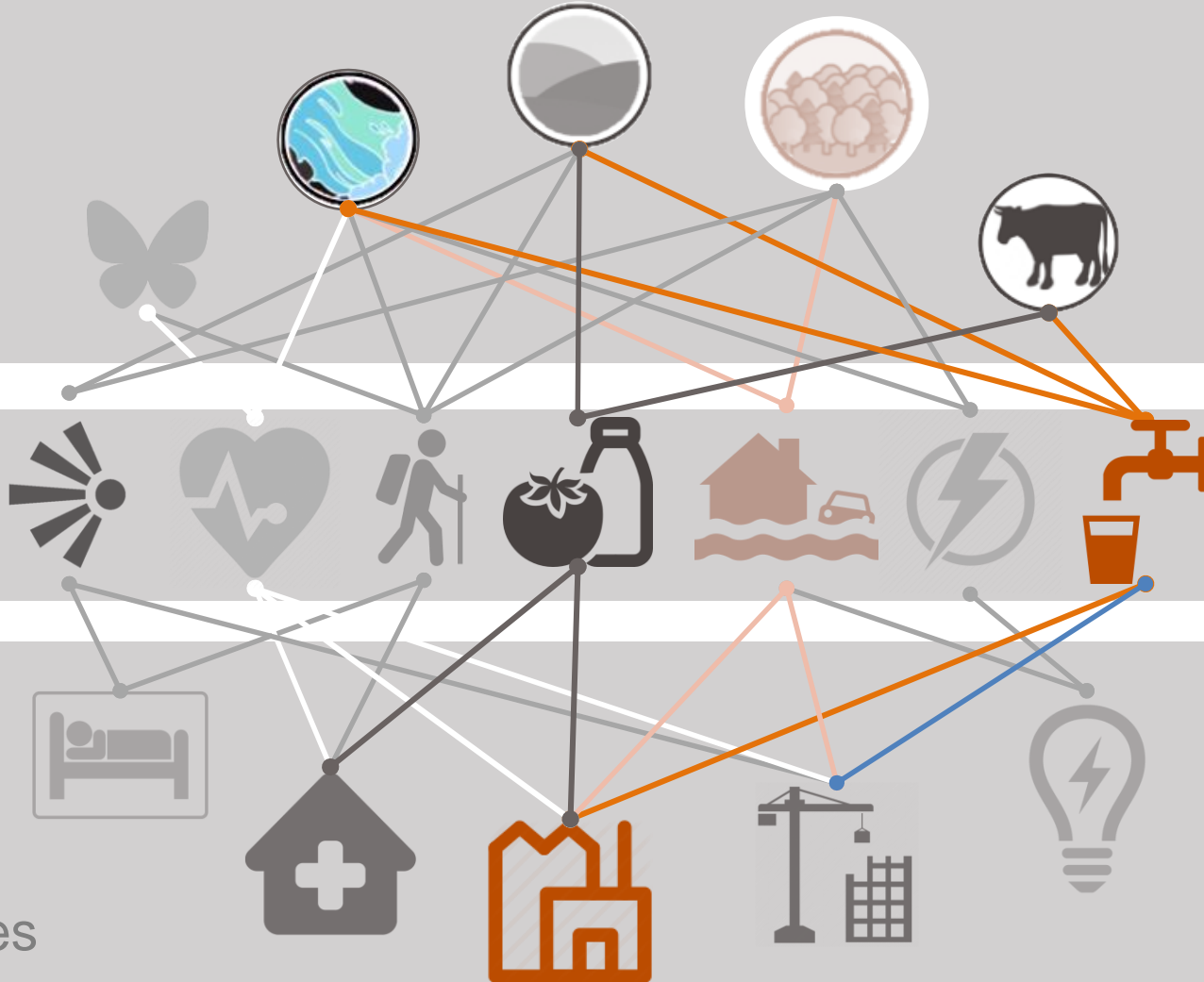
How we prioritise



Landscape Assets

Landscape Functions

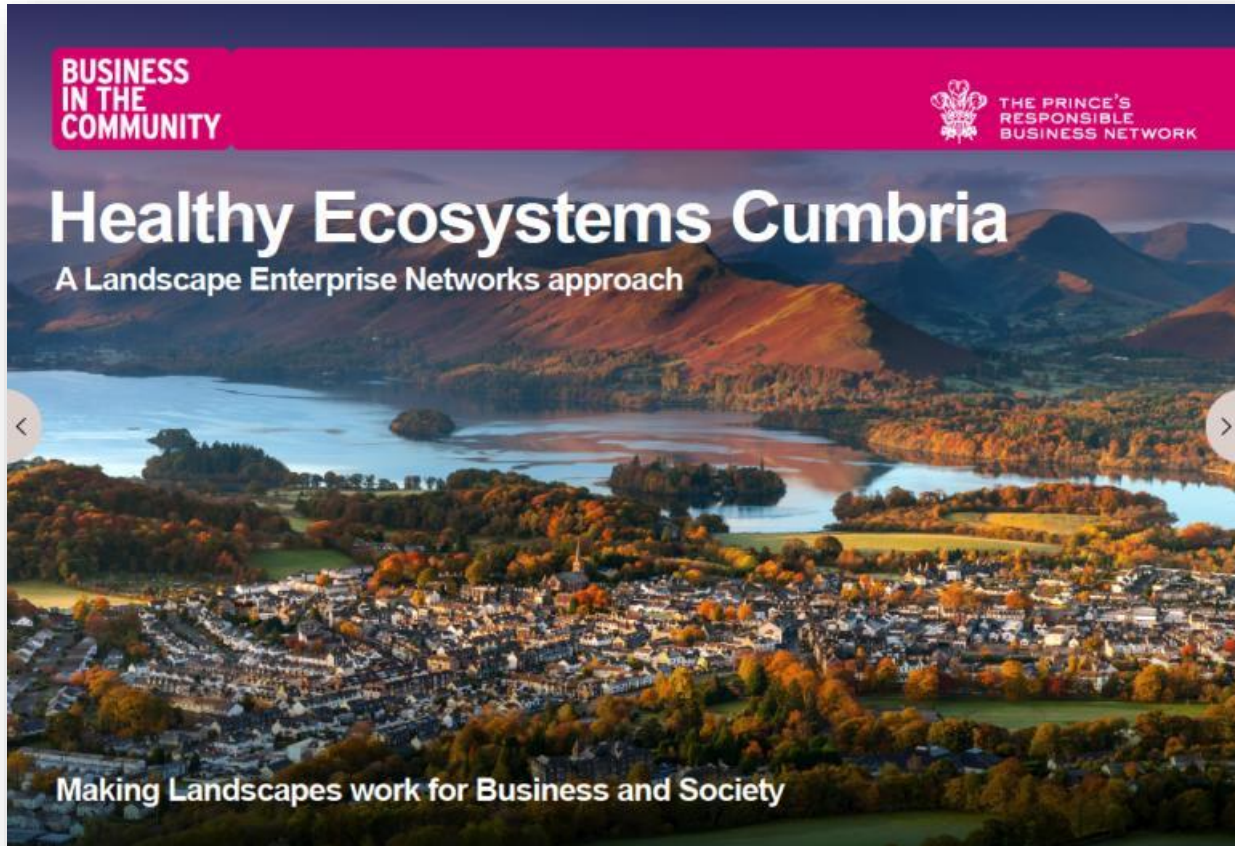
Landscape Beneficiaries



LENs is a framework for:

1. Understanding a company's functional dependencies in a landscape
2. Understanding the assets and characteristics of landscape that underpin those dependencies
3. Identifying organisations with a shared interest in those functions and assets
4. Establishing the basis for shared investments or transactions to manage those dependencies
5. Supporting land enterprises to service those needs

Our Milk Plan: Testing in Cumbria & southwest Scotland



Initial outcomes

Hedgerows

+17,000 metres of Hedgerows - either newly laid or gapped up

Important for increasing & improving quality of habitat for insects, birds; small mammals & wildflowers. Also acts as natural flood defence & strengthens soils



Fencing

+29,000 metres of fence put up - either along watercourses or on newly planted hedgerows

Fences protected newly planted hedgerows from being degraded before they reach maturity. They also protect waterways from being polluted by livestock and their banks damaged



Natural protection from the elements to livestock shelters as well as increasing ammonia absorption from silage



Woodland

21 hectares of newly planted woodland & shelter belts

Again, important habitat for farmland biodiversity, but also reuses materials, rather than quarrying for new stone.

Provides shelter with natural materials, preserving cultural heritage



Drystone Wall Repair

1,300 metres of repaired Drystone Wall



Opportunities across different propositions



Milk Plan

- Cumbria



- SW Scotland



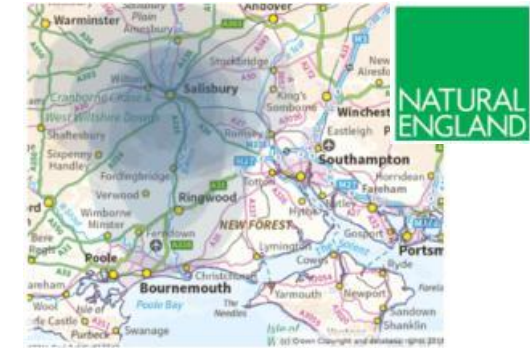
Cereal Plan

East Anglia / Northamptonshire



Buxton/Lightwood

Integrating AWS



Hampshire Avon



Cereal Plan & Governance

Yorkshire, Humberside & N.Lincolnshire



Thank you

