

# DROPLET-BASED LIQUID-LIQUID EXTRACTION AND ON-CHIP IR-WAVEGUIDE-SPECTROSCOPY DETECTION OF COCAINE IN HUMAN SALIVA

Philip Wägli<sup>1\*</sup>, Yu-Chi Chang<sup>2</sup>, Alexandra Homsy<sup>1</sup>, Lubos Hvozدارa<sup>2</sup>,  
Peter D. van der Wal<sup>1</sup>, Hans Peter Herzig<sup>2</sup>, Nico F. de Rooij<sup>1</sup>

<sup>1</sup> EPFL, STI IMT-NE, SAMLAB, Switzerland, <sup>2</sup> EPFL, STI IMT-NE, OPT, Switzerland

## ABSTRACT

We present a portable microsystem to quantitatively detect cocaine in human saliva. The chip combines a simple microfluidic method for multiphase liquid-liquid extraction to transfer cocaine from IR-light absorbing saliva to an IR-transparent solvent with the on-chip cocaine detection by IR-waveguide-spectroscopy (QC-laser, waveguide, detector). With our droplet-based extraction method we achieve an additional analyte pre-concentration of at least two orders of magnitude.

## KEYWORDS:

cocaine detection, liquid-liquid extraction, IR-spectroscopy, droplet generation, droplet merging

## INTRODUCTION

On-site drug testing of easily accessible body fluids has gained a lot of importance both for road safety and forensic applications. IR-waveguide-spectroscopy was chosen as detection method. Unfortunately the characteristic absorption peak of cocaine is at  $5.8\mu\text{m}$  - a wavelength where saliva (water) is strongly absorbing light as well [1]. Therefore, the multiphase liquid-liquid extraction system presented here brings the analyte to a transparent medium before detection.

H-filters, the common method for microfluidic liquid-liquid extraction [2], were tested as a reference system for our droplet based approach. To increase the diffusion interface it has been suggested to replace the parallel flow (H-filter) by a droplet-based approach with channel-wide droplets [3]. With our new extraction system we go a step further and enhance the extraction efficiency by producing smaller droplets and varying the flow ratio of the two liquids to allow pre-concentration. Our work also includes IR-absorption measurements of cocaine integrated on micro-chip level. To the best of our knowledge, this is the first time that such a measurement has ever succeeded.

## EXPERIMENTAL

Our chip consists of an optical detection waveguide made of germanium on silicon (Figure 1), which was plasma-bonded to the microfluidic part (Figure 2). The mid-IR waveguide was made from a mono-crystalline germanium layer with standard photolithography and reactive ion etching by  $\text{CF}_4$ . The microchannels were made by molding the UV-curable adhesive NOA81 (Norland Optical Adhesives) on a Scotch-tape master (Figure 3&4a). NOA81 was found to be a suitable material for low-cost forensic applications due to its low cocaine adsorption and chemical compatibility with organic solvents [4,5]. Figure 2 shows the complete optofluidic system including the connectors for the tubing.

Figure 5 provides an overview of the extraction system. First monodispersed perchloroethylene (PCE) droplets were generated in saliva using the capillary focusing effect (Figure 6) [6]. The depth of the channel mainly defined the droplet size, and allowed us to independently adjust the flow rates in order to reach the requirements for coalescence further downstream of the chip. After the extraction section, a shallow and hydrophilic side channel drained out the saliva. Coalescence of the PCE droplets was based on both compressive merging (compression of the droplets against the end of the extraction channel) and decompressive merging when the droplets are accelerated (constant flow rate, smaller cross-section) into the shallower hydrophobic PCE outlet-channel. Acceleration resulted in local droplet separation and induced the formation of two facing nipples in the contact area (local low-pressure). This brought the interfaces close enough to merge [7]. Finally, the cocaine extracted to the IR-transparent PCE was then measured in continuous phase by the optical waveguide.

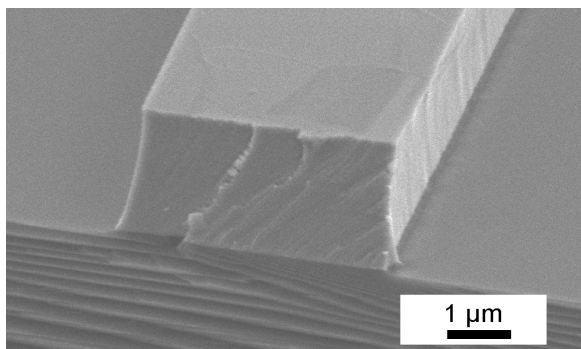


Figure 1. SEM-image of the optical waveguide made of germanium on silicon.

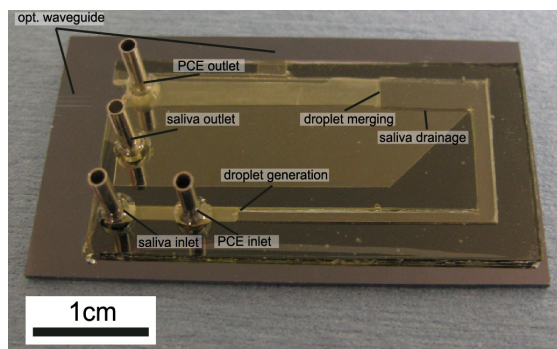


Figure 2. Integrated optofluidic system consisting of the NOA81 microfluidic part bonded on the silicon substrate.

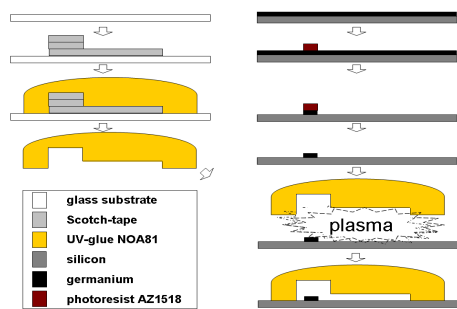


Figure 3. Scheme of fabrication: NOA81 molding using a scotch-tape master and plasma-bonding on the silicon substrate containing the germanium waveguide.

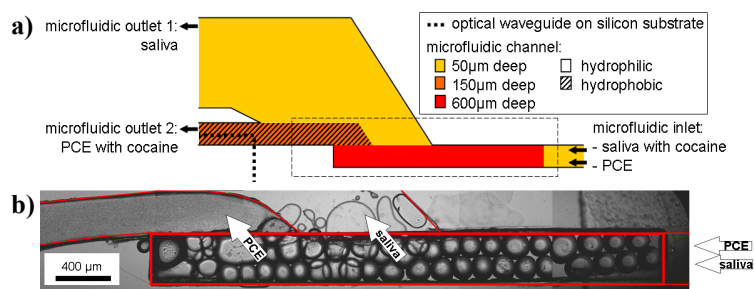


Figure 4. a) Schematic of the microfluidic chip with different channel depths, surface properties, and indicated position of the optical waveguide on the covering silicon substrate. b) Microscopy image of the zone within the dashed frame on a) showing the droplet generation on the right, drainage and merging on the left side.

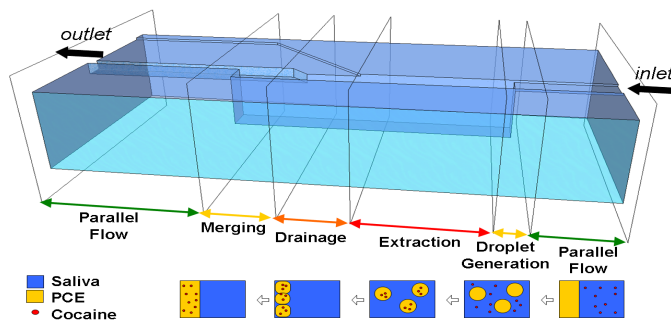


Figure 5. 3D-Schematic of the microfluidic part and in parallel cross-section views of the channel showing the different phases of the droplet-based liquid-liquid extraction process.

## RESULTS AND DISCUSSION

Droplets were generated using the capillary focusing effect [6]. When a slug-flow of PCE surrounded by saliva flowed over a step, PCE droplets were ripped of the slug. The droplet size mainly depended on the channel depth, showing a linear dependence (Figure 7). The generated PCE droplets were monodispersed showing variations of the diameter of less than 3%.

The presented droplet-based extraction system achieves up to two orders of magnitude better extraction efficiencies than the state-of-the-art H-filters. Depending on the imbalance of the flow rates we even manage to pre-concentrate the cocaine in PCE (Figure 8).

Quantitative on-chip measurements are feasible with a limit of detection (LOD) of  $100\mu\text{g}/\text{mL}$ . Figure 9 shows the IR-waveguide-detection of different cocaine concentrations flowed ( $50\mu\text{L}/\text{min}$ ) through a test device consisting of a short optical waveguide covered by a simple straight microfluidic channel. For the design and the description of the system refer to [8]. Figure 10 presents the detection of  $500\mu\text{g}/\text{mL}$  cocaine spiked in saliva and extracted on-chip to PCE by using the presented droplet-based liquid-liquid extraction system.

## CONCLUSION

The presented droplet-based microfluidic system enables up to two orders of magnitude better extraction efficiencies compared to the state of the art H-filters. Cocaine extracted from human saliva to PCE was detected by IR-waveguide-spectroscopy on the integrated optofluidic device. Our LOD of  $100\mu\text{g}/\text{mL}$  is not sufficient to detect the saliva concentration of a single cocaine dose, which can exceed  $1900\text{ng}/\text{mL}$  cocaine in human saliva for 2-4 hours [9], but we

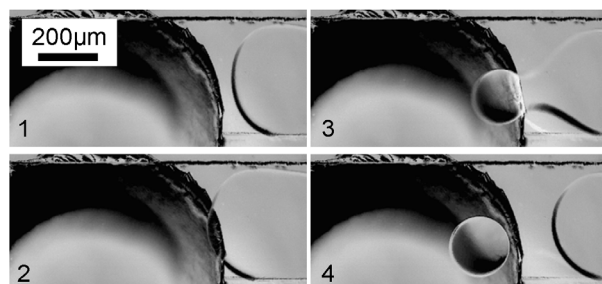


Figure 6. PCE droplet generation in human saliva at the step between shallow and deep microfluidic channel by the capillary focusing effect based on Rayleigh-Plateau instability. (flow rates:  $8\mu\text{L}/\text{min}$  saliva,  $2\mu\text{L}/\text{min}$  PCE; period:  $\sim 30\text{ms}$ )

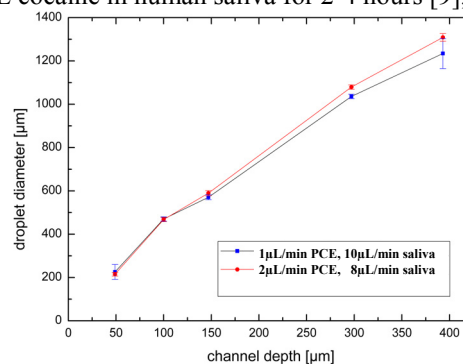


Figure 7. The droplet size mainly depends on the channel depth (linear dependence).

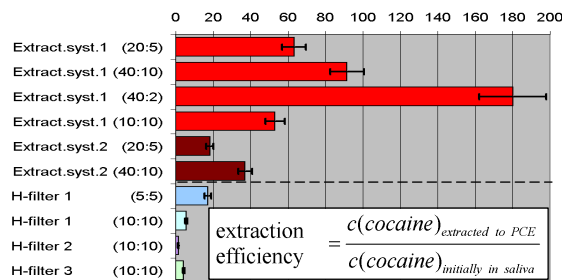


Figure 8. Cocaine extraction (saliva to PCE) efficiency measured by UPLC-MS for two different designs of our extraction system and three different designs of H-filters at varying flow rate ratios (values in brackets in  $\mu\text{L}/\text{min}$ ).

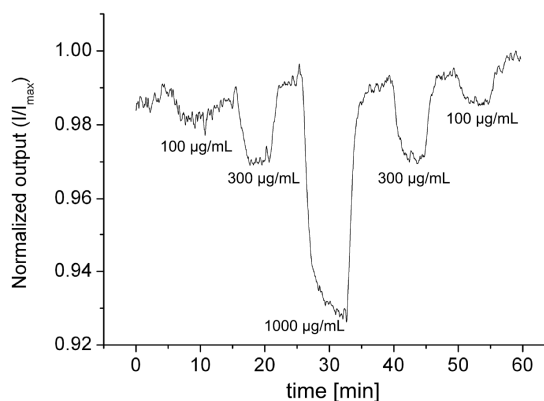


Figure 9. Quantitative detection of different concentrations of cocaine mixed in PCE.

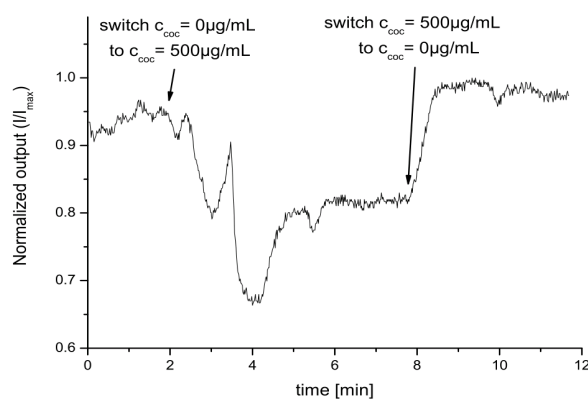


Figure 10. 500  $\mu\text{g}/\text{mL}$  cocaine in saliva detected after extraction to the IR-transparent organic solvent PCE with the integrated system.

are working on improving our LOD by using smaller droplets (higher surface-to-volume ratio), more imbalanced flow ratios, a longer and wider extraction section (increased extraction time), and temperature stabilization of the laser (noise and baseline-drift reduction).

## ACKNOWLEDGEMENTS

This project is scientifically evaluated by the SNSF, financed by the Swiss Confederation and funded by Nano-Tera.ch. We also acknowledge the SNF R'Equip program for the funding of the high speed data acquisition test bench.

## REFERENCES

- [1] M.-C.Hans, M. Gianella, and M.W. Sigrist, *Sensing cocaine in saliva with attenuated total reflection infrared (ATR-IR) spectroscopy combined with a one-step extraction method*, Proc. SPIE, 8229, pp. 822919 1–822919 7, San Francisco, California, USA (2012).
- [2] P. Yager, T. Edwards, E. Fu, K. Helton, K. Nelson, M.R. Tam, and B.H. Weigl, *Microfluidic diagnostic technologies for global public health*, Nature, 442(7101), pp. 412–418 (2006).
- [3] P. Mary, V. Studer, and P. Tabeling, *Microfluidic droplet-based liquid-liquid extraction*, Anal Chem., 80(8), pp. 2680–2687 (2008).
- [4] Ph. Wägli, Ch. Berchtold, A. Homsy, P. van der Wal, and N.F. de Rooij, *UV-curable adhesive as the low-cost material of choice for microfluidic forensic applications*, Proc. IMCS, Nürnberg, Germany (2012).
- [5] Ph. Wägli, A. Homsy, and N.F. de Rooij, *Norland optical adhesive (NOA81) microchannels with adjustable wetting behavior and high chemical resistance against a range of mid-infrared-transparent organic solvents*, Sens. and Act. B, 156(2), pp. 994–1001 (2011).
- [6] F. Malloggi, N. Pannacci, R. Attia, F. Monti, P. Mary, H. Willaime, P. Tabeling, B. Cabane, and P. Poncet, *Monodisperse colloids synthesized with nanofluidic technology*, Langmuir, 26(4), pp. 2369–2373 (2009).
- [7] N. Bremond, A.R. Thiam, and J. Bibette, *Decompressing emulsion droplets favors coalescence*, Phys. Rev. Lett., 100(2), pp. 0245011–0245014 (2008).
- [8] Y.-C. Chang, P. Wägli, V. Paeder, A. Homsy, L. Hvozdar, P.D. van derWal, J. Di Francesco, N.F. de Rooij, and H.P. Herzig, *Cocaine detection by a mid-infrared waveguide integrated with a microfluidic chip*. Lab on a Chip, accepted, (2012).
- [9] A.J. Jenkins, J.M. Ovler, and E.J. Cone, *Comparison of heroin and cocaine concentrations in saliva with concentrations in blood and plasma*, Anal. Tox., 19(6), pp. 359–374 (1995).

## CONTACT

\*Ph. Wägli, +41-32-7205087 or philip.waegli@epfl.ch