

Supplemental Information

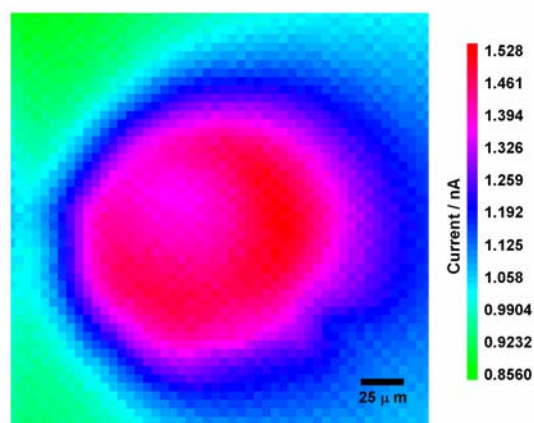


Figure S1. Topographical image of an aperture in a teflon septum containing a BLM. Topographical imaging was used to locate the septum aperture and BLM prior to imaging of transport across the BLM. [10 μm CF-UME, 1 mM Fc-TMA, 0.1 M KCl, 0.01 M HEPES, pH 7.0, $E = 0.65$ V, $i_{ss}(\text{Fc-TMA}, 1 \text{ mM}) = 1.02 \text{ nA}$].

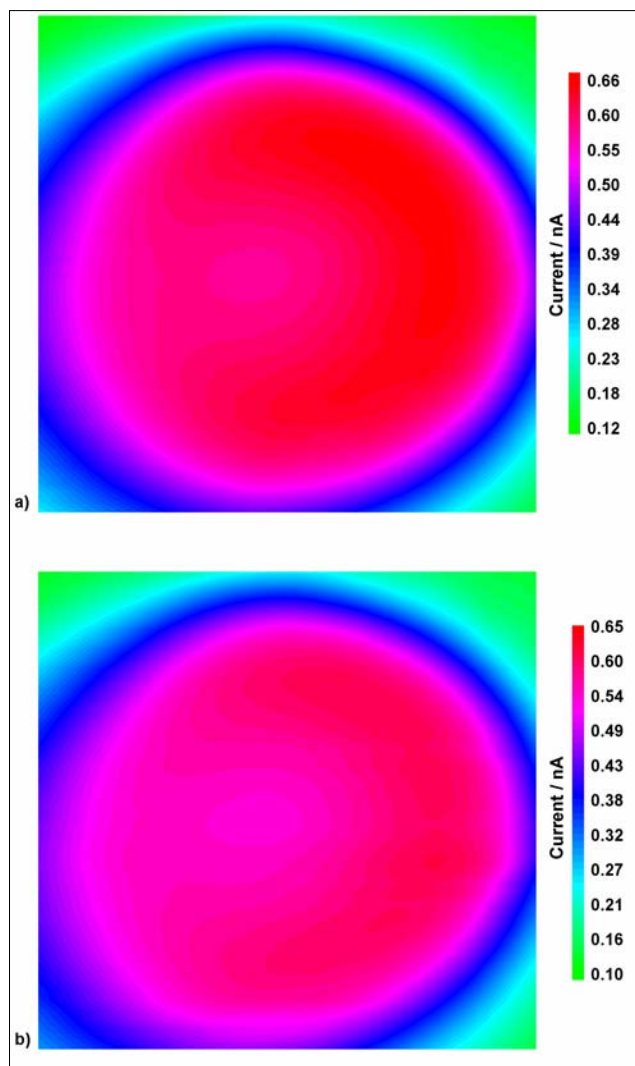


Figure S2. Results of a control experiment showing Ru-hex transport through a BLM without an inserted alamethicin pore, in the absence of (a) and in the presence of (b) a 50 mV membrane bias. [7 μm CF-UME, 1 mM Ru-hex, 0.1 M KCl, 0.01 M HEPES, pH 7.0, $E = -0.35$ V, $i_{ss}(\text{Fc-TMA}, 1 \text{ mM}) = 1.9 \text{ nA}$].