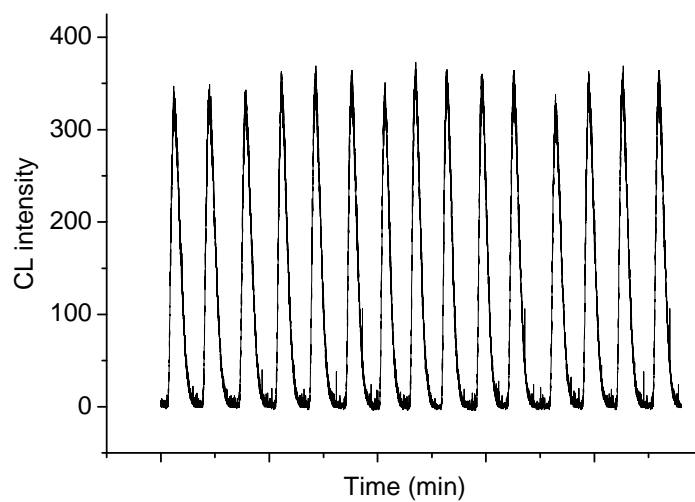
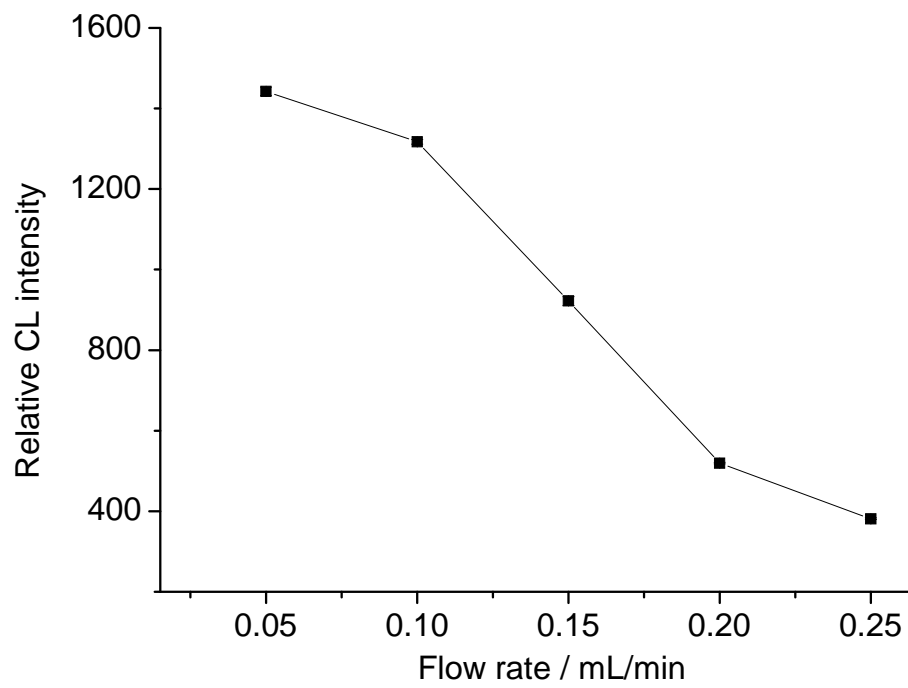


Supporting Information

SFig. 1 The CL intensity of 0.5 mM luminol + 4 mM H₂O₂ + 0.5 mM PIP at AFP concentration of 500 ng/mL after regeneration of the immunoaffinity column by 10 mM NaOH.



SFig. 2 Effect of flow rate of pre-incubation immunomixture through the immunoaffinity column on the CL intensity. Pre-incubation time of 80 ng/mL AFP with enzyme tracer was 30 min



SFig. 3 Reproducibility of the immunoaffinity reactor with 0.5 mM luminol + 4 mM H_2O_2 + 0.5 mM PIP at AFP concentration of 300 ng/mL.

