

Supporting Information

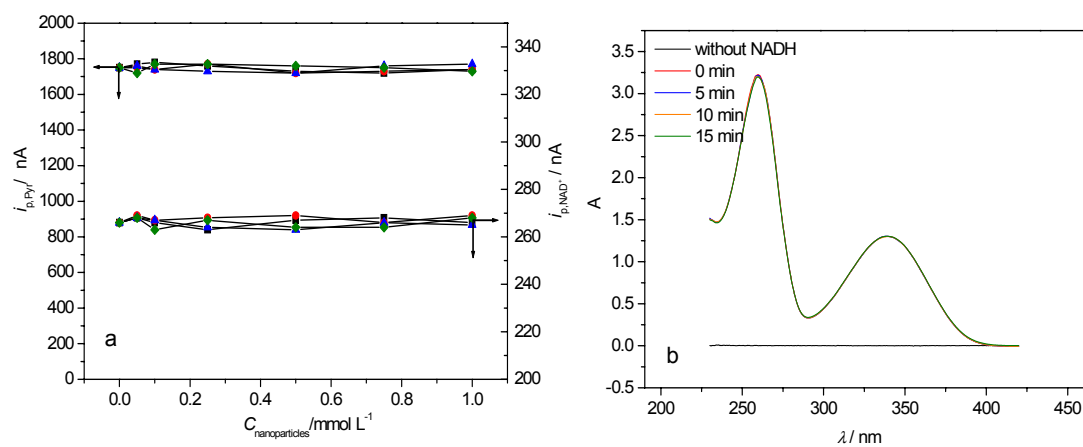


Fig.S1. Investigation of the adsorption of nano- Al_2O_3 on the HMDE. ● nano- Al_2O_3 -50 nm; ▲ nano- Al_2O_3 -300 nm; □ nano- Al_2O_3 -1000 nm; ■ nano-AlN. $C_{\text{nanoparticle}} = 0.5, 1.0, 2.5, 5.0, 7.5, 10 \times 10^{-4} \text{ mol L}^{-1}, 8.0 \times 10^{-4} \text{ mol L}^{-1}$ Pyr, $2.0 \times 10^{-4} \text{ mol L}^{-1}$ NADH, $1.2 \times 10^{-4} \text{ mol L}^{-1}$ NAD^+ , Other experimental conditions are the same as in Fig. 1.