

Supporting Information

Surface-Enhanced Raman Spectroscopy for Facile DNA Detection using Gold Nanoparticle Aggregates Formed *via* Photoligation

*Nguyen T. B. Thuy, Ryoko Yokogawa, Yoshinaga Yoshimura,
Kenzo Fujimoto, Mikio Koyano, Shinya Maenosono**

Results of HPLC analyses

T-DNA: 5'-TACACTGAAGTGAAAAGTGTGAGTG-3' (25-mer)

P1: 5'-HS-ACTCACAGTTTTTCAC-3' (15-mer, 5'-SH)

P2: 5'-^{CV}UTCAGTGTA-SH-3' (9-mer, 3'-SH)

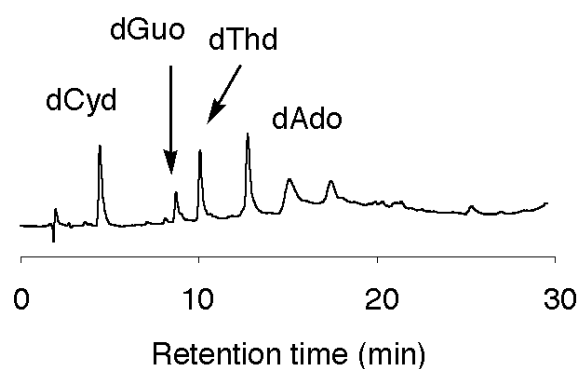


Figure S1. HPLC analysis of the products obtained during enzymatic digestion of P1.

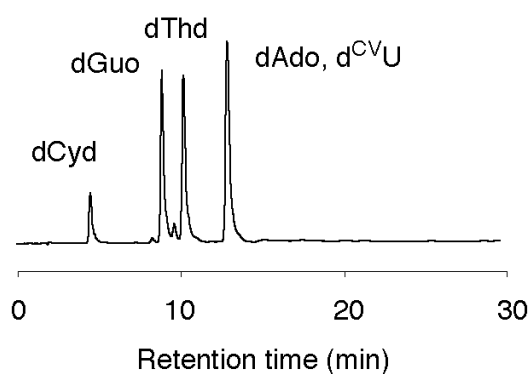


Figure S2. HPLC analysis of the products obtained during enzymatic digestion of P2.

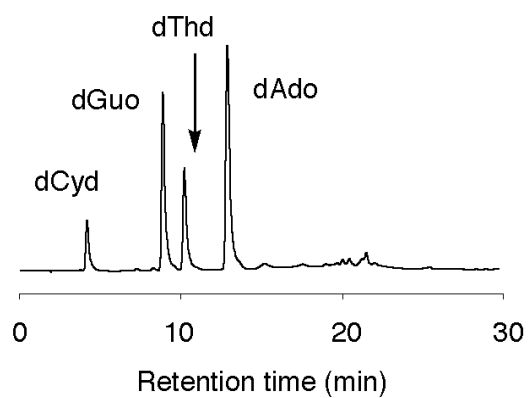


Figure S3. HPLC analysis of the products obtained during enzymatic digestion of T-DNA.

Results of MALDI-TOF-MS analyses

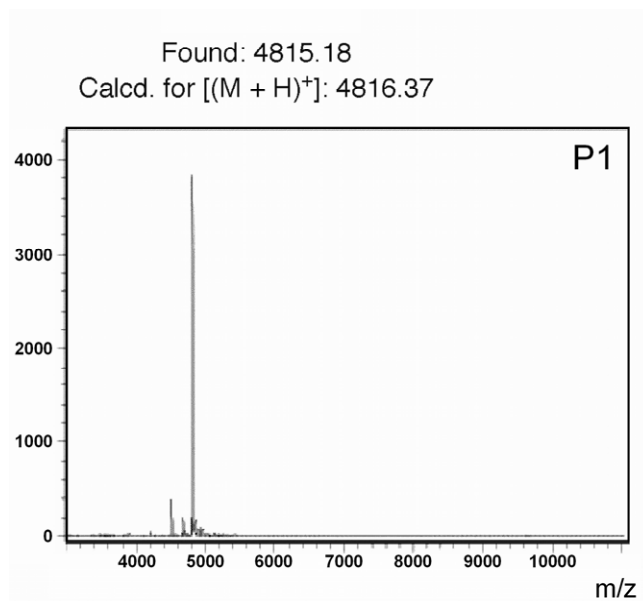


Figure S4. MALDI-TOF-MS analysis of P1 using 3-hydroxypicolinic acid as a matrix.

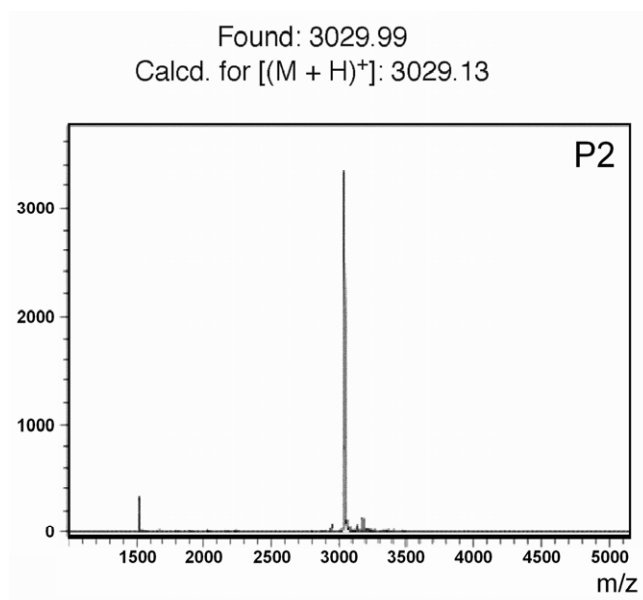


Figure S5. MALDI-TOF-MS analysis of P2 using 3-hydroxypicolinic acid as a matrix.

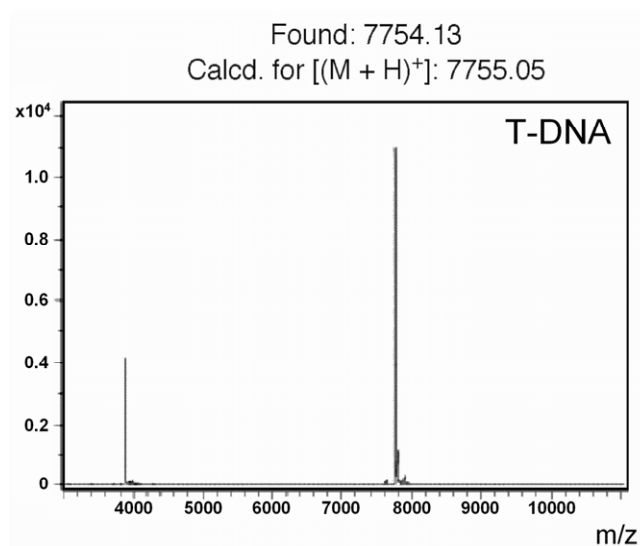


Figure S6. MALDI-TOF-MS analysis of T-DNA using 3-hydroxypicolinic acid as a matrix.