

Supplementary Information for:

Analysis of Monomeric A β (1-40) Peptide by Capillary Electrophoresis

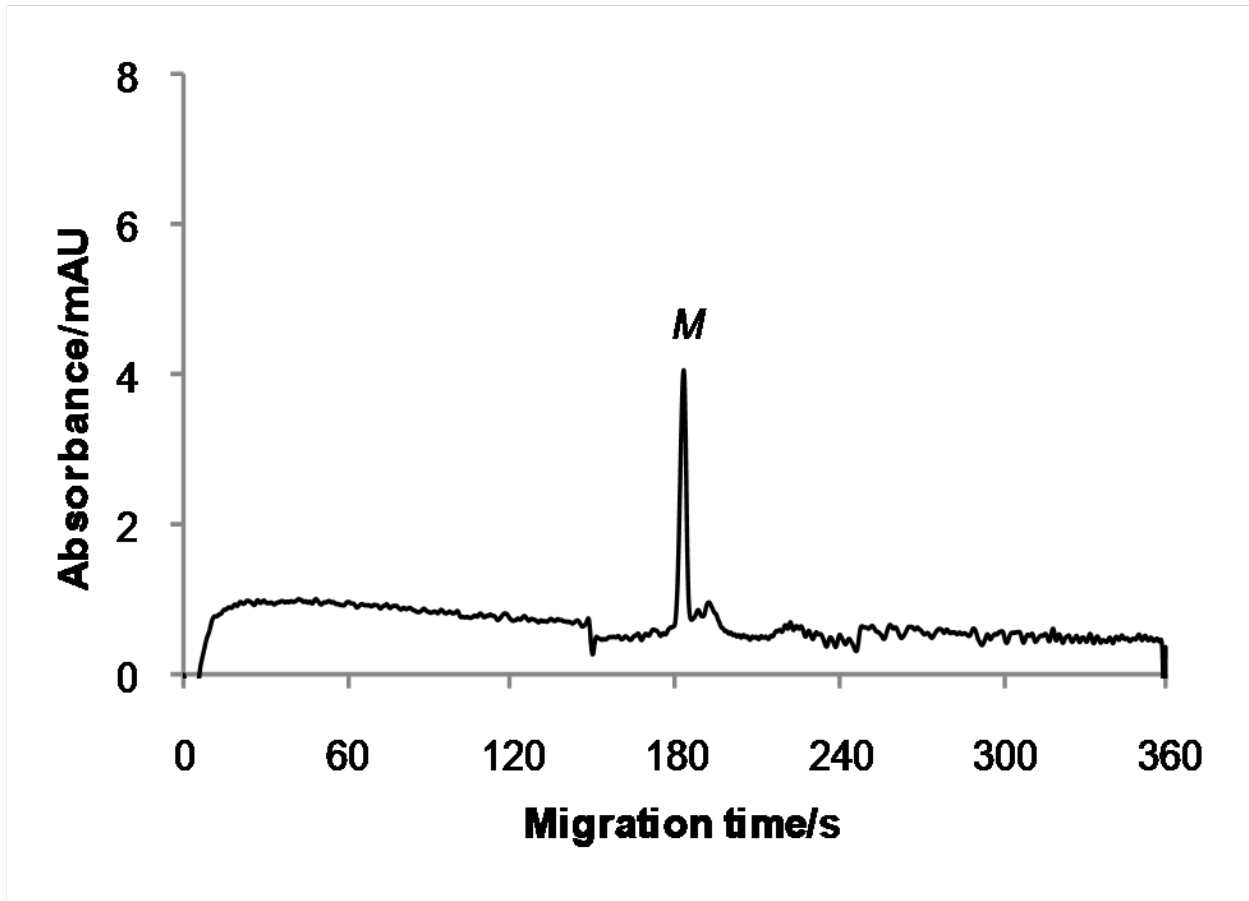
Ryan Picou,^a Julia P. Moses,^a Amber D. Wellman,^b Indu Kheterpal,^c
and S. Douglass Gilman^{*a}

^a*Department of Chemistry, Louisiana State University, Baton Rouge, LA 70803*

^b*Department of Chemistry, University of Tennessee, Knoxville, TN 37996-1600, USA*

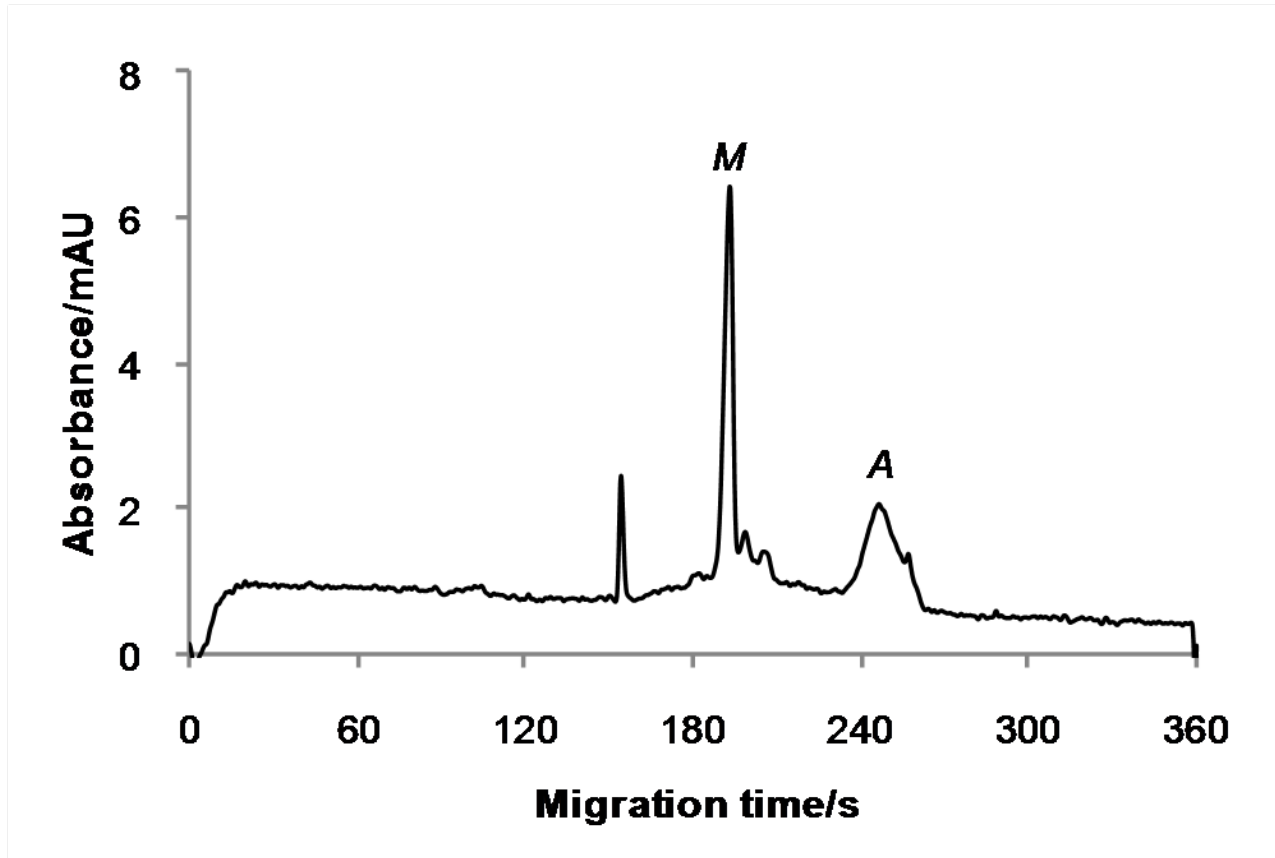
^c*Pennington Biomedical Research Center, Louisiana State University System, Baton Rouge, LA 70808, USA*

Supplementary Figure 1



- Electropherogram is identical to that presented in Figure 2a, but plotted vs. time (x-axis) instead of electrophoretic mobility.

Supplementary Figure 2



- Electropherogram is identical to that presented in Figure 2b, but plotted vs. time (x-axis) instead of electrophoretic mobility.