

## Supporting Information

For

### Discovery of a Highly Selective Turn-on Fluorescent Probe for Ag<sup>+</sup>

Zhaochao Xu,<sup>a,b,c</sup> Shaojun Zheng,<sup>a,d</sup> Juyoung Yoon\*<sup>b</sup> and David R. Spring\*<sup>a</sup>

<sup>a</sup> Department of Chemistry, University of Cambridge, Lensfield Road, Cambridge, UK. E-mail: [drspring@ch.cam.ac.uk](mailto:drspring@ch.cam.ac.uk)

<sup>b</sup> Department of Chemistry and Nano Science and Department of Bioinspired Science, Ewha Womans University, Seoul, 120-750, Korea, Fax: (+)82-2-3277-3419, E-mail: [jyoon@ewha.ac.kr](mailto:jyoon@ewha.ac.kr)

<sup>c</sup> State Key Laboratory of Fine Chemicals, Dalian University of Technology, Dalian 116012, China

<sup>d</sup> Institute of Pesticide Science, Northwest Agricultural & Forestry University, Shaanxi, China

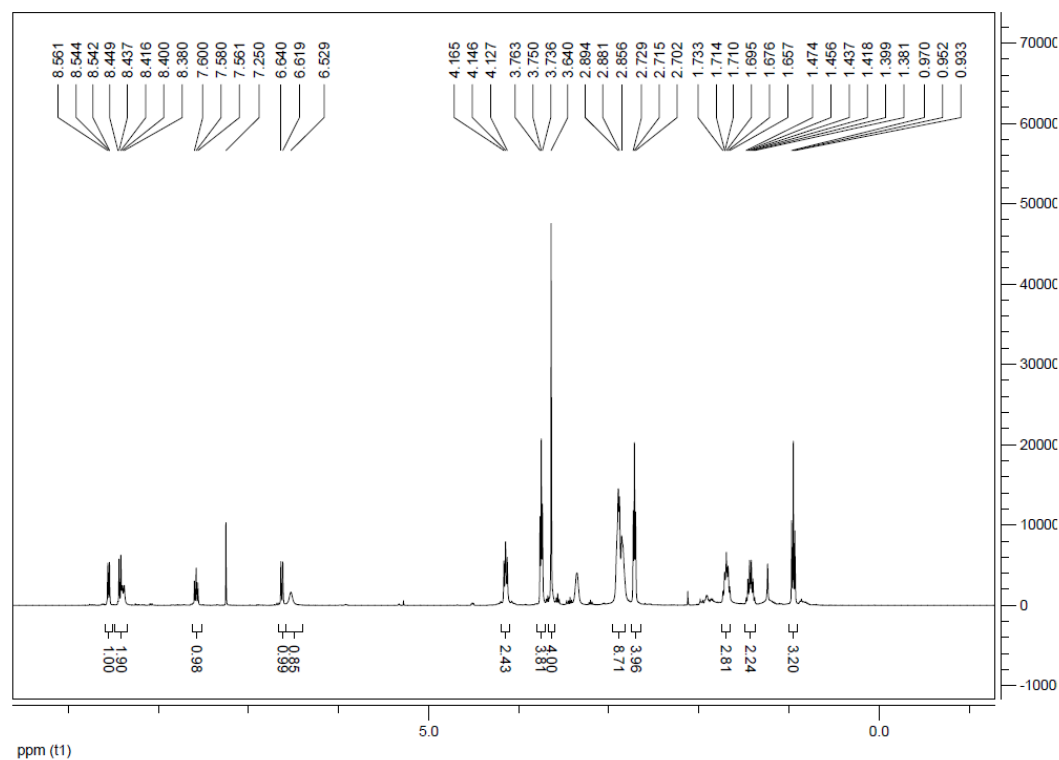


Figure S1. <sup>1</sup>H-NMR spectra of compound **1** in CDCl<sub>3</sub>.

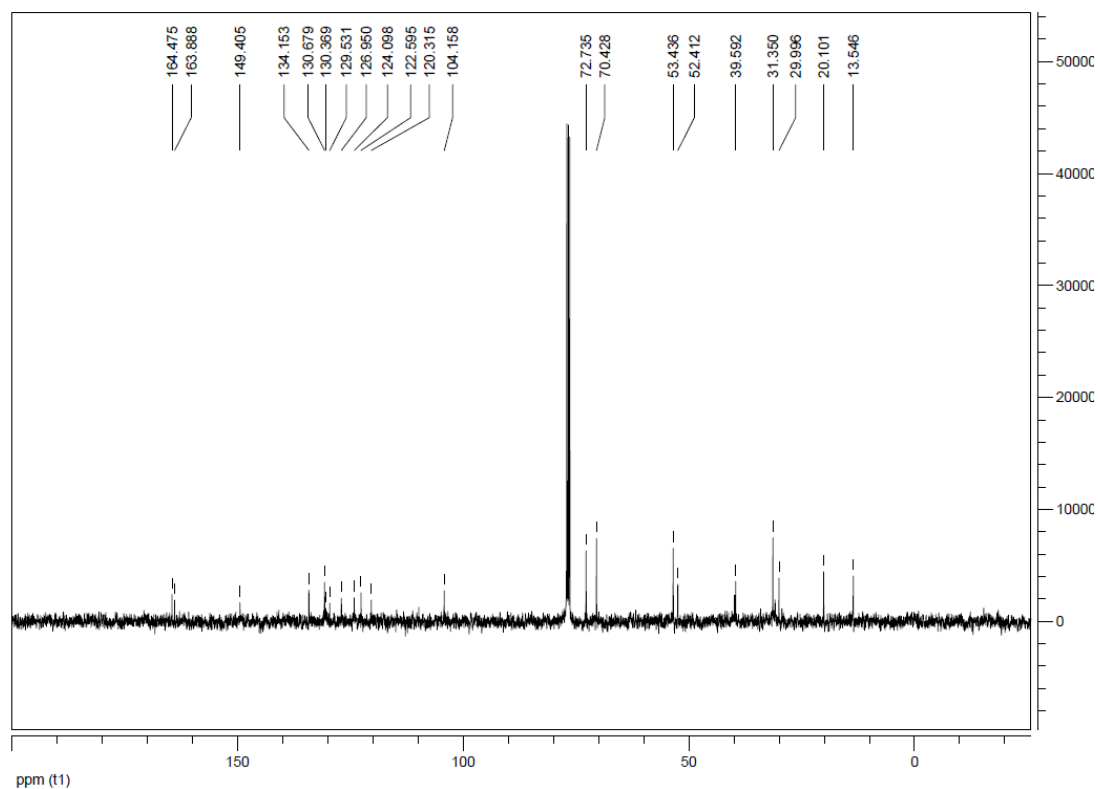


Figure S2.  $^{13}\text{C}$ -NMR spectra of compound **1** in  $\text{CDCl}_3$ .

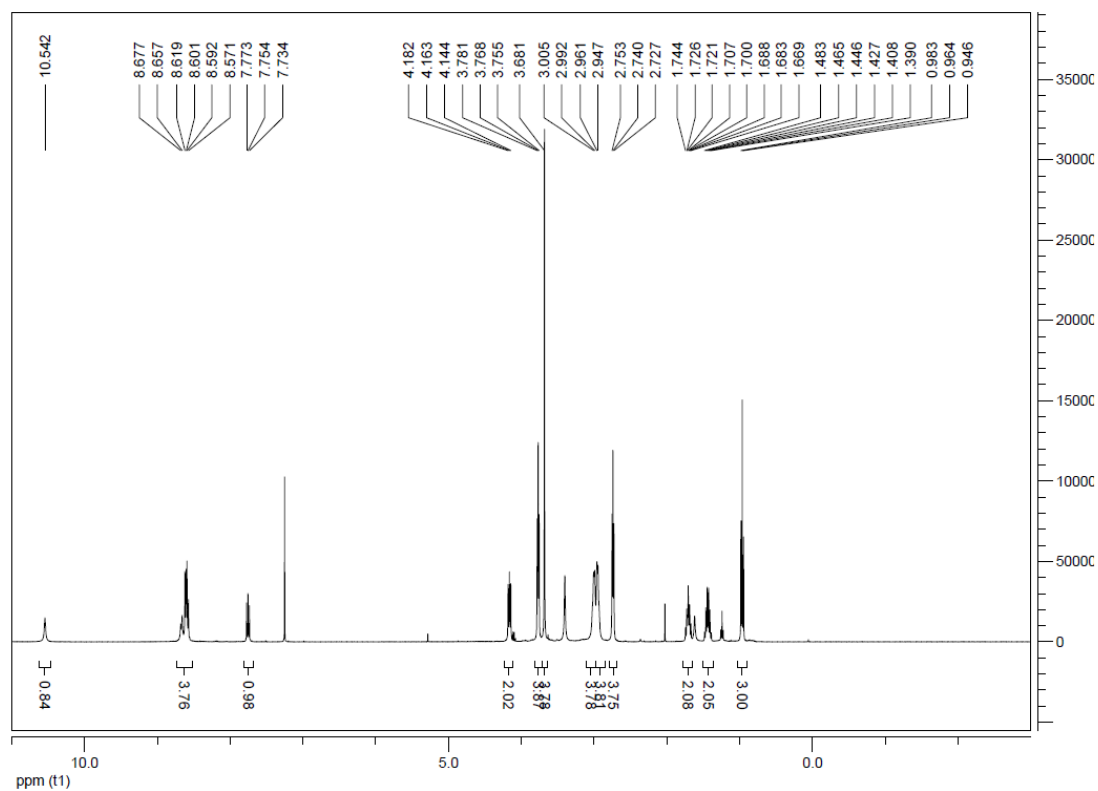


Figure S3.  $^1\text{H}$ -NMR spectra of compound **2** in  $\text{CDCl}_3$ .

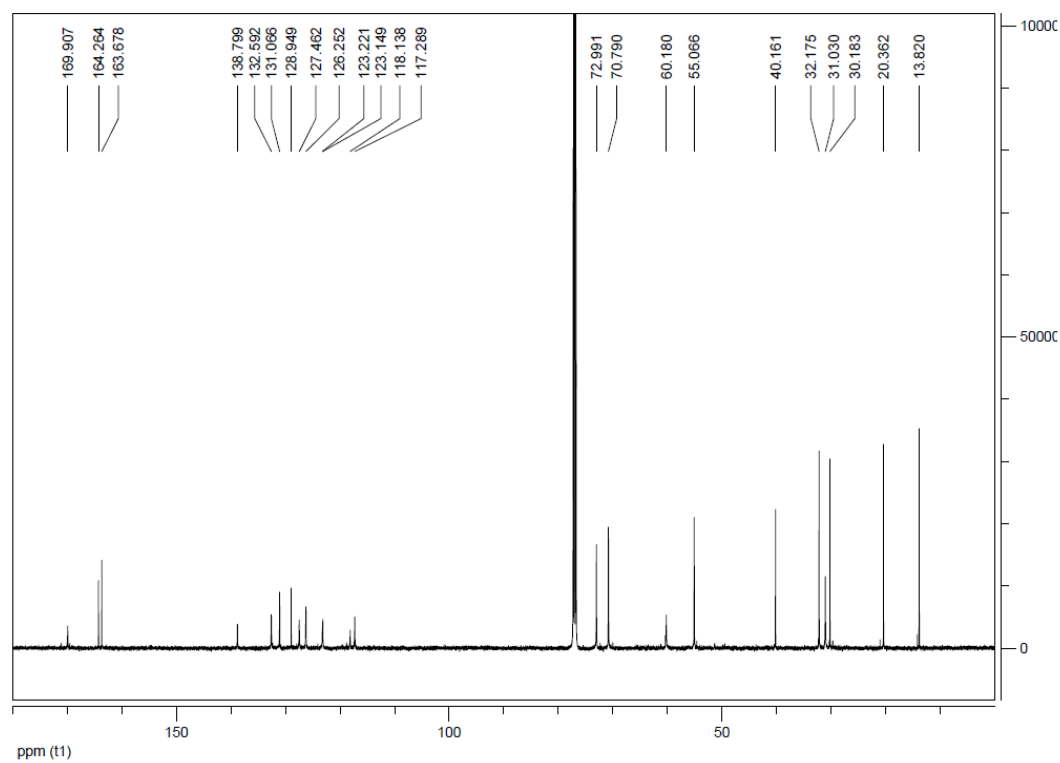


Figure S4. <sup>13</sup>C-NMR spectra of compound **2** in CDCl<sub>3</sub>.