

Supplementary Materials

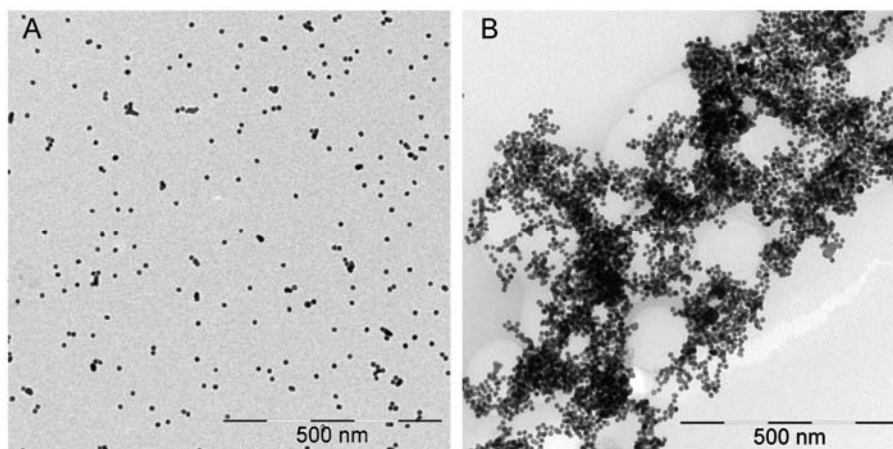


Figure S1. The TEM images of cysteamine modified 13 nm AuNPs in the absence (A) or the presence (B) of 10 mg/L melamine.

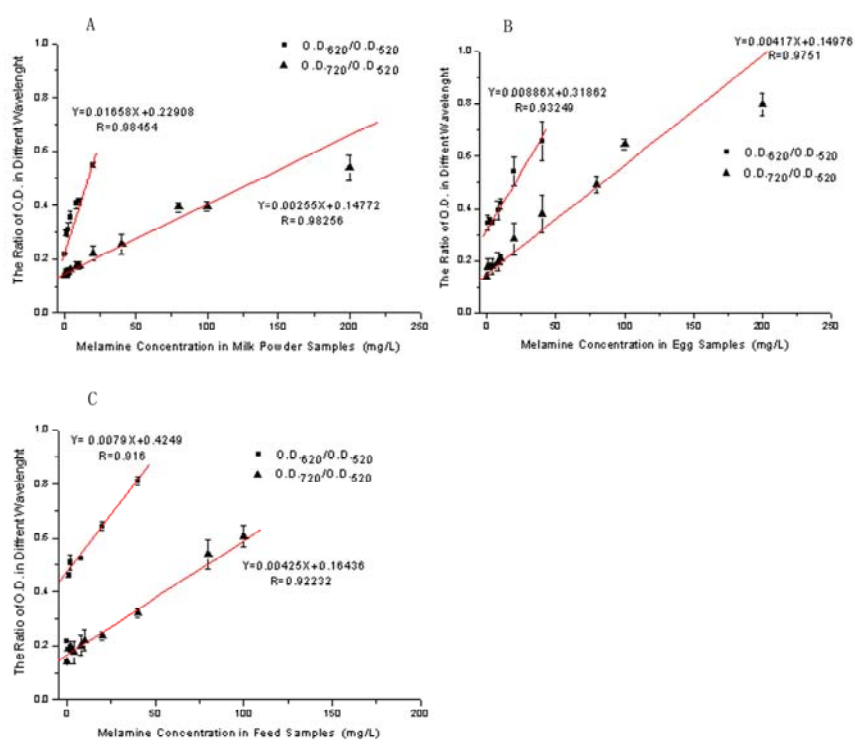


Figure S2. The calibration curve of melamine in spiked samples. Extinction ratios (A720/520 and A620/520) were plotted against melamine in milk powder (A), eggs (B), and adult dog food (C).