

Supplementary Data

Synchrotron FTIR analysis of drug treated ovarian A2780 cells: an ability to differentiate cell response to different drugs?

Kevin R. Flower,^a Intisar Khalifa,^b Paul Bassan,^b Damien Demoulin,^b Edward Jackson,^b Nicholas P. Lockyer,^b Alan T. McGown,^c Philip Miles^a and Lisa Vaccari,^d Peter Gardner.^b

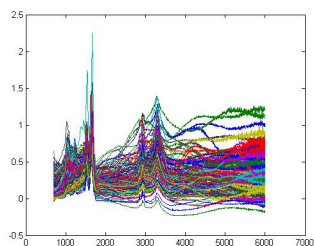
^aSchool of Chemistry, The University of Manchester, Manchester, M13 9PL, UK.

^bManchester Interdisciplinary Biocentre, The University of Manchester, Manchester M1 7DN, UK.

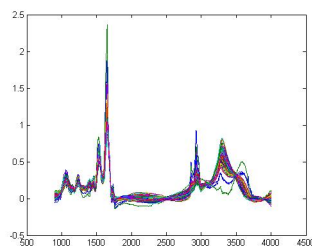
^cSchool of Environmental and Life Sciences, University of Salford, Salford, M5 4WT, UK.

^dElettra Synchrotron Light Laboratory, SS14 Km 163.5, 34149 Basovizza, Trieste, Italy.

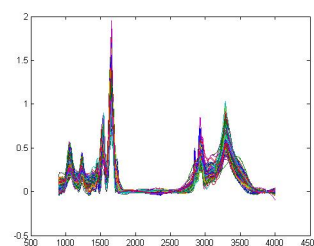
1. Spectral correction output after 1 iteration and 8 iterations of the RMieS correction programme.



Raw spectra

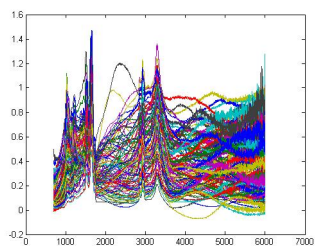


1 iteration

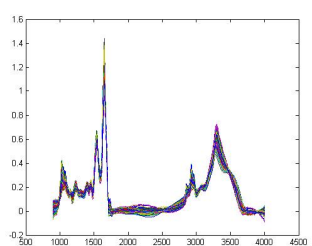


8 iterations

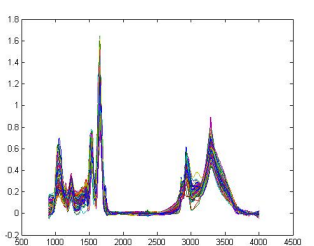
Control



Raw spectra



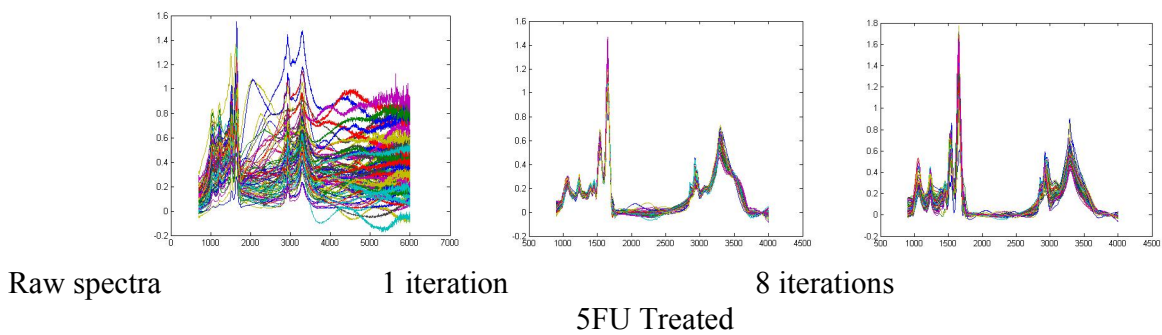
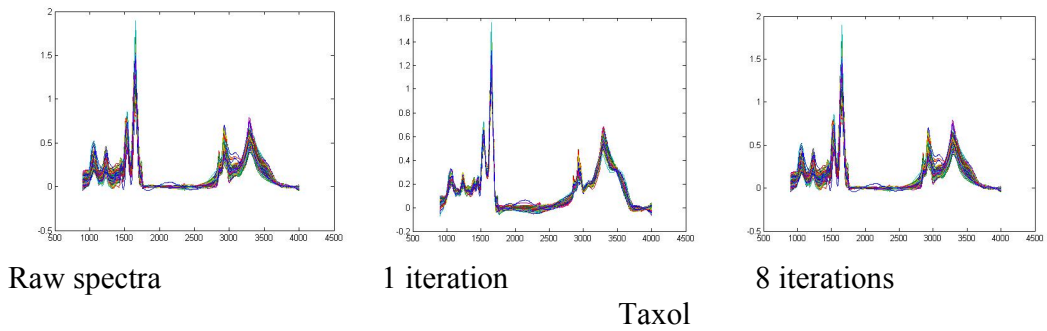
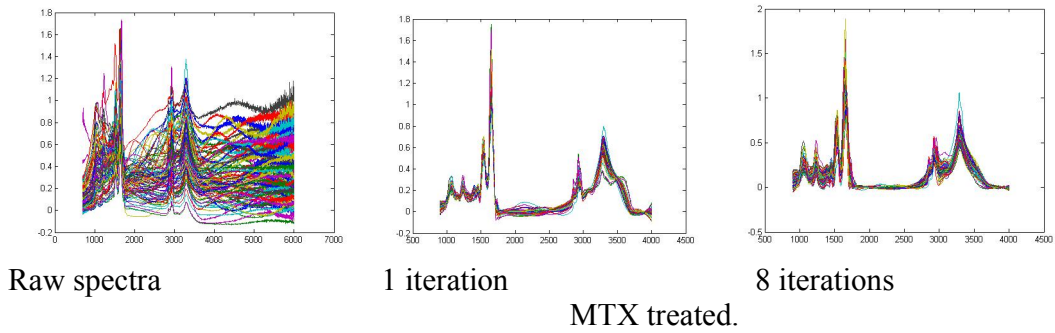
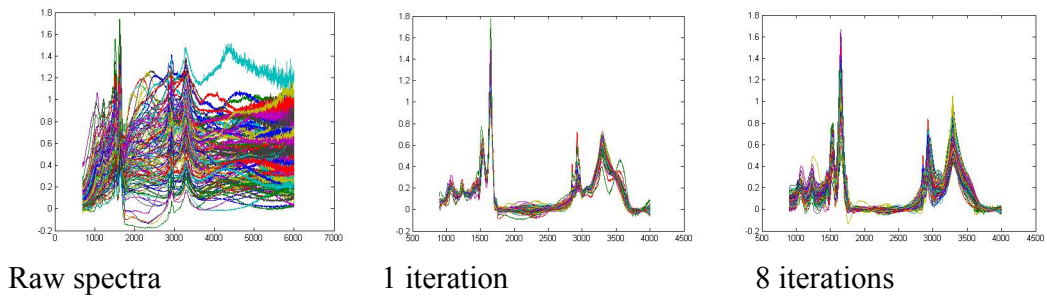
1 iteration



8 iterations

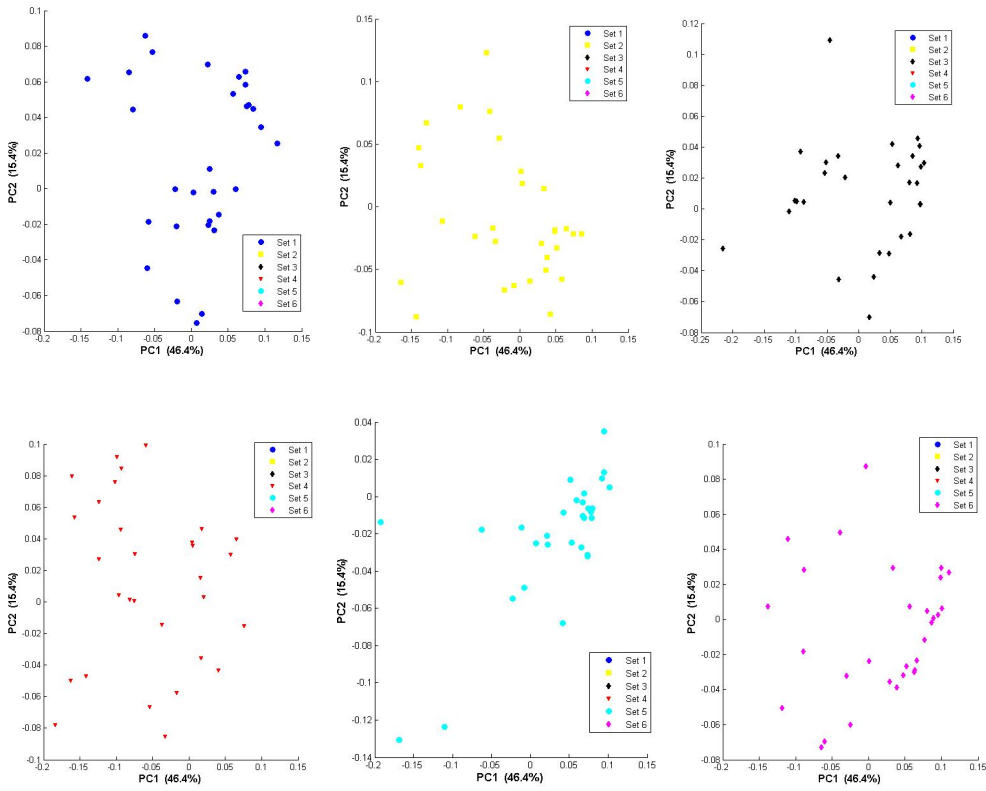
KF0101

Supplementary Data



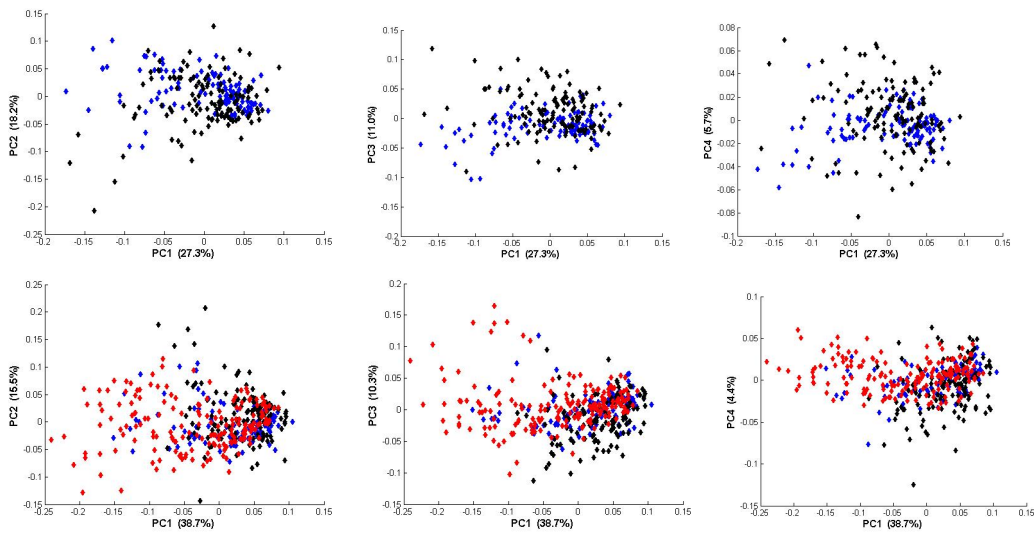
2. Individual scatter plots for the 30 cells in each collection allocation of the control.

Supplementary Data



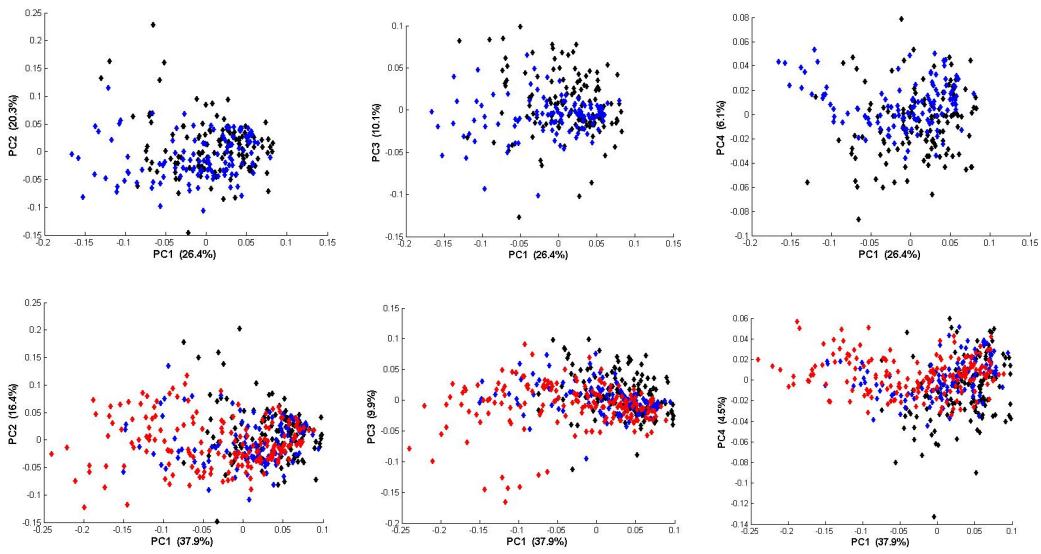
3. Comparison of cells treated with two different drugs.

Representative plots (PC1 vs PC2; PC1 vs PC3 and PC1 vs PC4) of cells treated with a single drug versus cells treated with another drug along with the associated plots including the control.

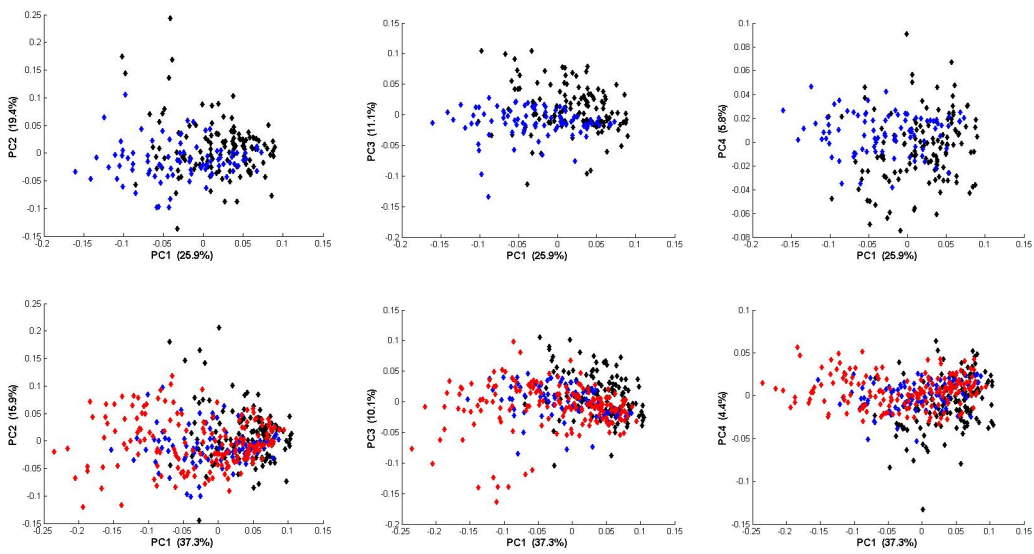


Cisplatin (black) vs MTX (blue) vs Control (red)

Supplementary Data

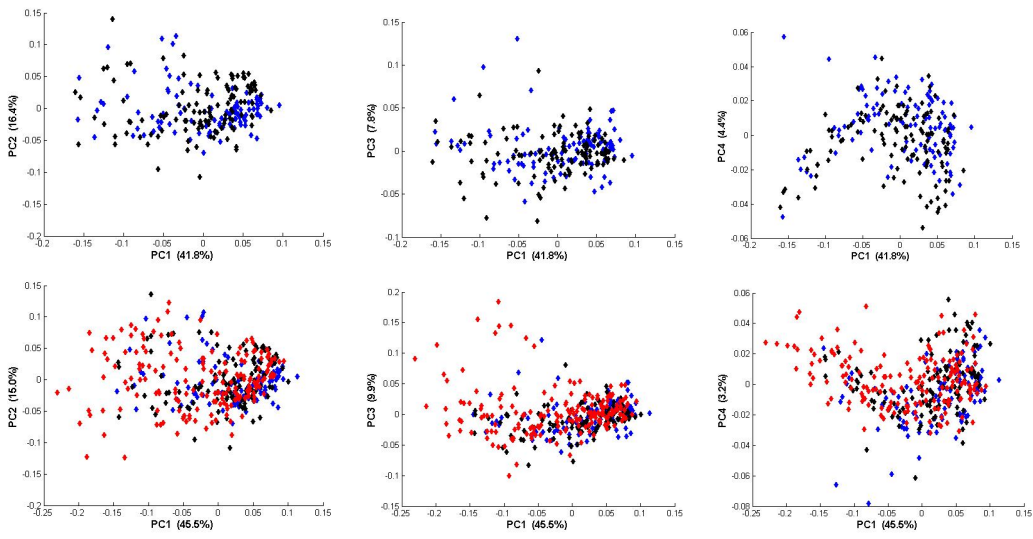


Cisplatin (black) vs TAX (blue) vs Control (red)

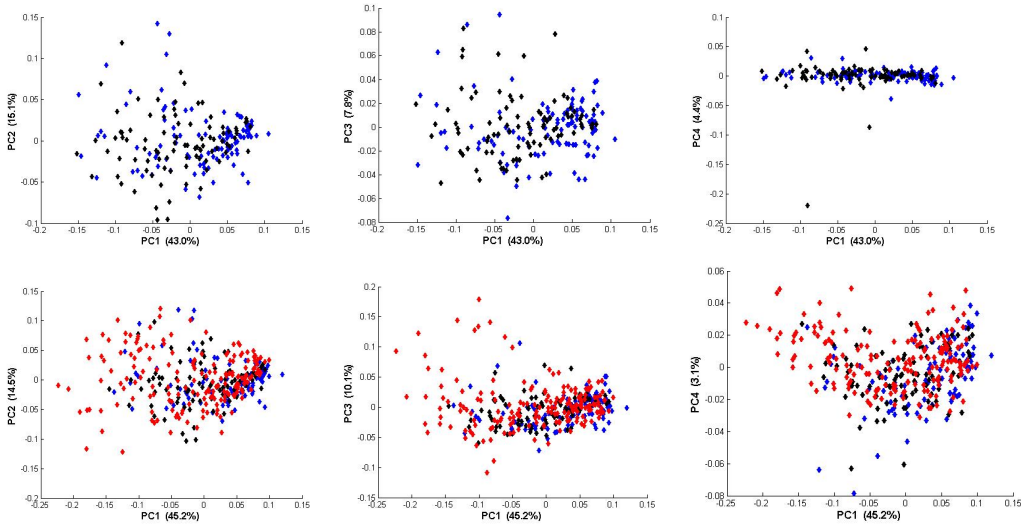


Cisplatin (black) vs 5FU (blue) vs Control (red)

Supplementary Data

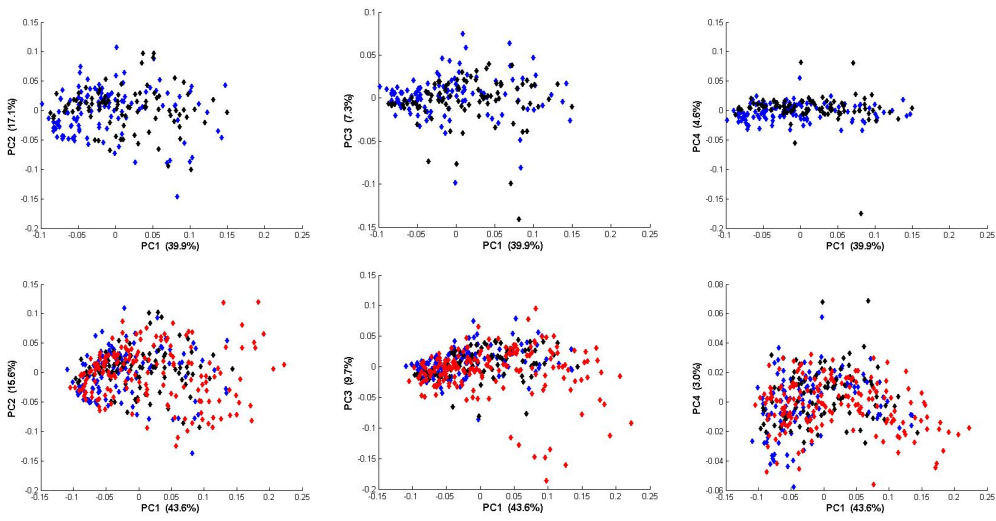


MTX (blue) vs TAX (black) vs Control (red)



MTX (blue) vs 5FU (black) vs Control (red)

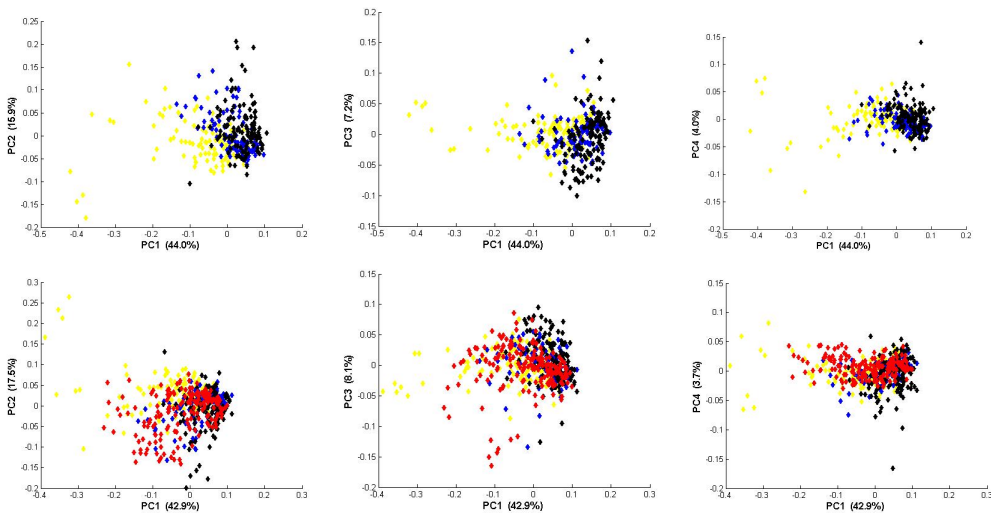
Supplementary Data



TAX (blue) vs 5FU (black) vs Control (red)

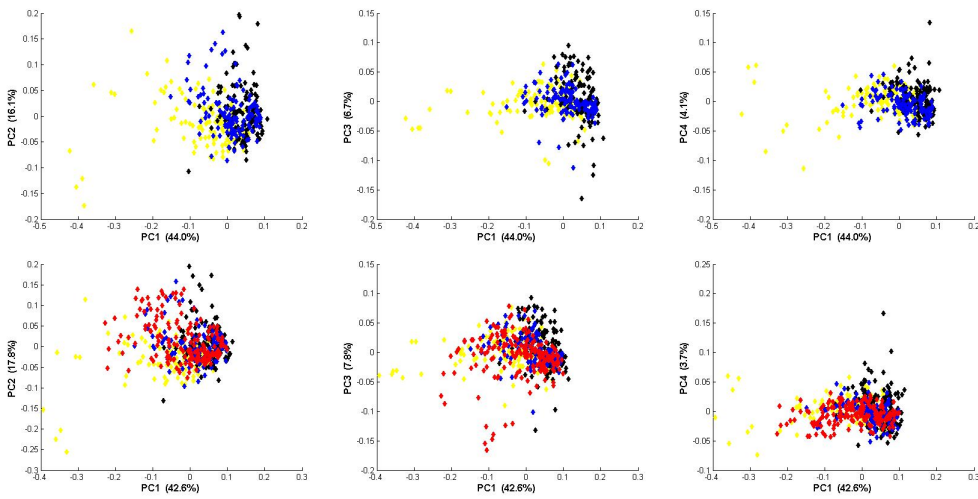
(3) Comparison of cells treated with three different drugs.

Representative plots (PC1 vs PC2; PC1 vs PC3 and PC1 vs PC4) of cells treated with a single drug versus cells treated with another drug versus cells treated with another drug along with the associated plots including the control.

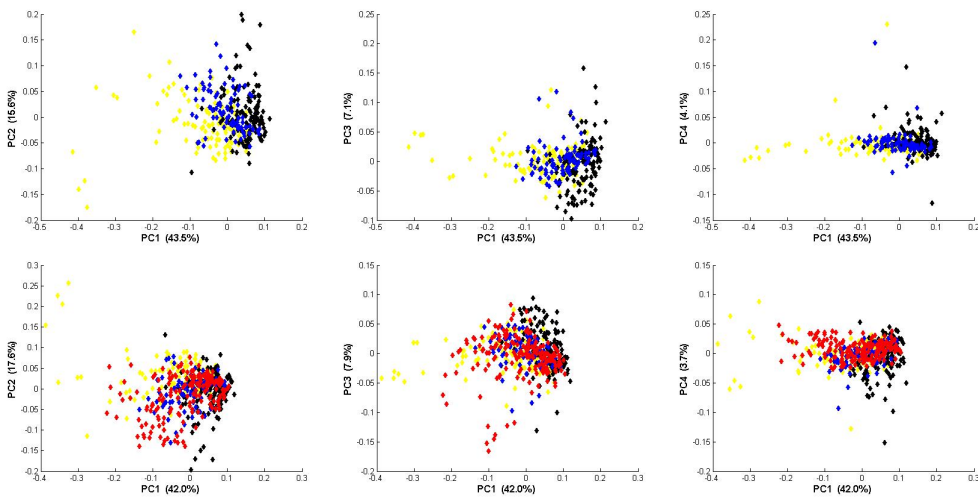


KF0101 (yellow) vs Cisplatin (black) vs MTX (blue) vs Control (red)

Supplementary Data

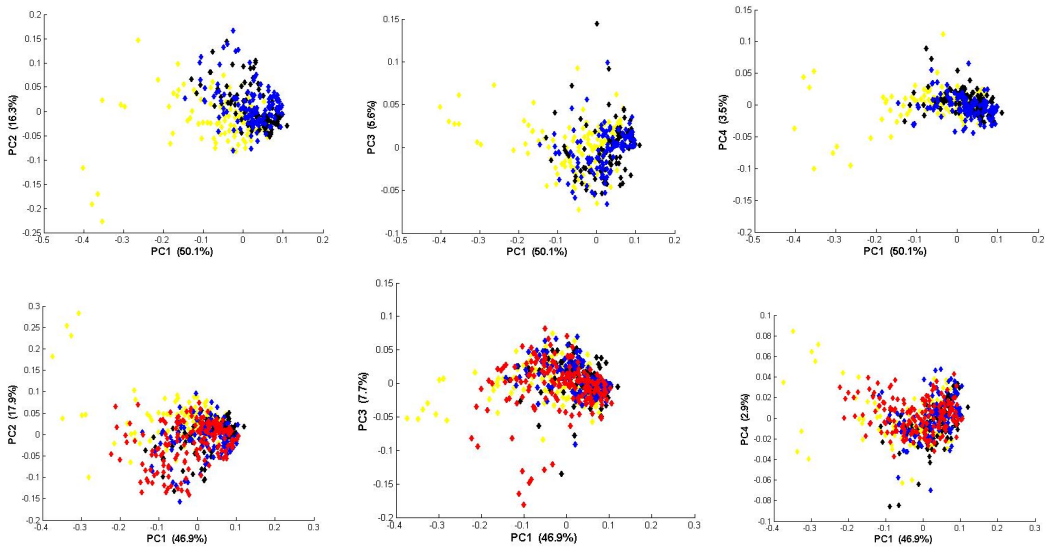


KF0101 (yellow) vs Cisplatin (black) vs TAX (blue) vs Control (red)

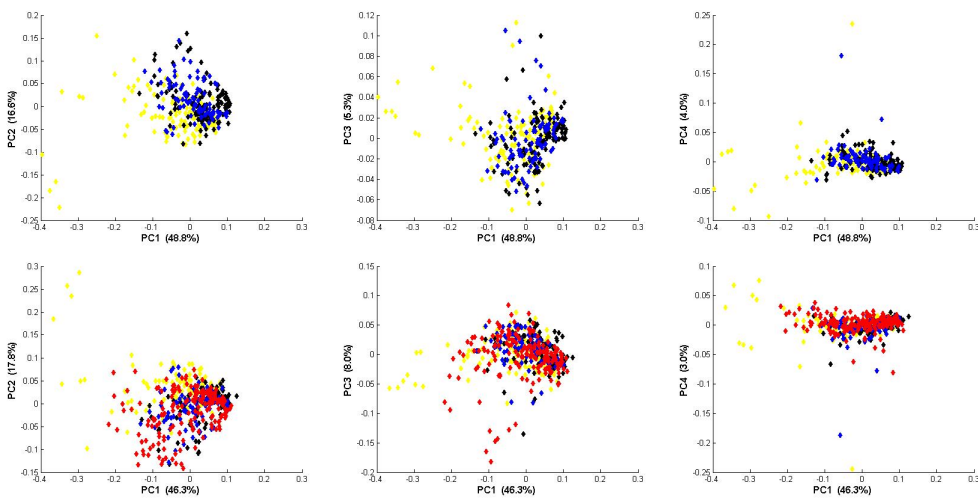


KF0101 (yellow) vs Cisplatin (black) vs 5FU (blue) vs Control (red)

Supplementary Data

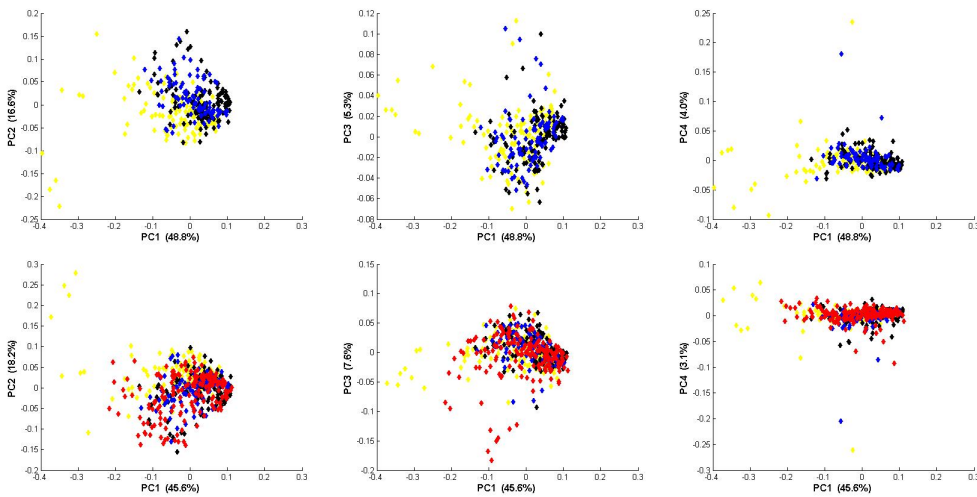


KF0101 (yellow) vs MTX (black) vs TAX (blue) vs Control (red)



KF0101 (yellow) vs MTX (black) vs 5FU (blue) vs Control (red)

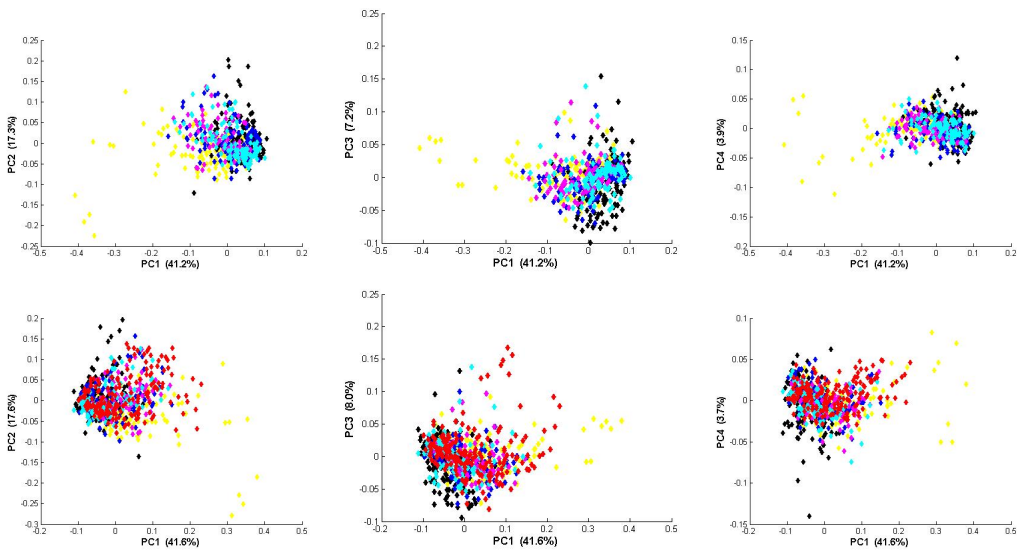
Supplementary Data



KF0101 (yellow) vs TAX (blue) vs 5FU (black) vs Control (red)

(4) Comparison of cells treated all drugs and the control.

Representative plots (PC1 vs PC2; PC1 vs PC3 and PC1 vs PC4) of cells treated with a single drug versus cells treated with another drug along with the associated plots including the control are illustrated in Figure 7.



KF0101 (yellow) vs Cisplatin (black) vs MTX (cyan) vs TAX (blue) vs 5FU (magenta) vs Control (red)