

Fig. S1. The absorbance spectra (a) and calibration graph measured at 625 nm (b) of the reference method for determination of amylose in rice.

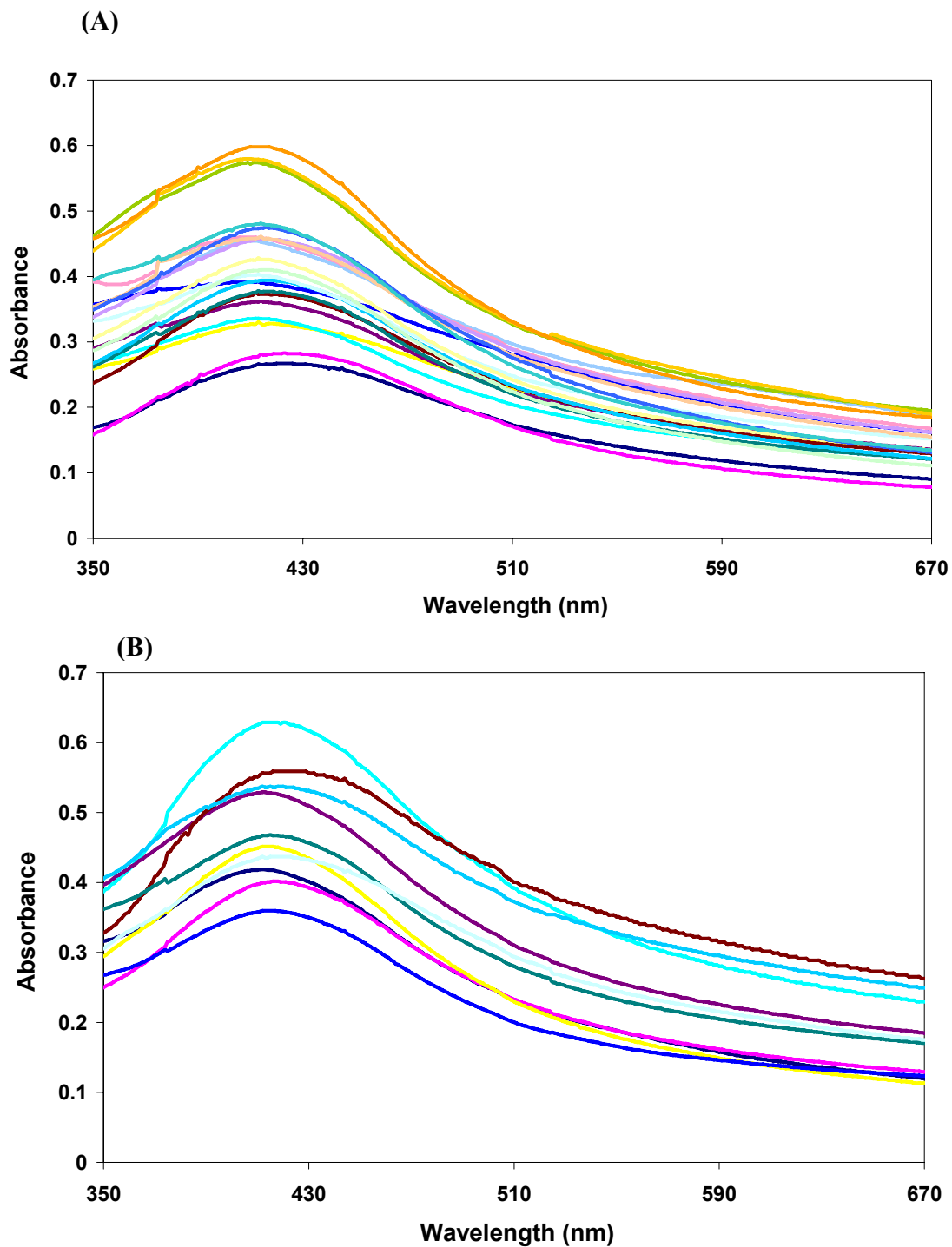


Figure S2. The SPR absorbance spectra of the (A) calibration and (B) test samples

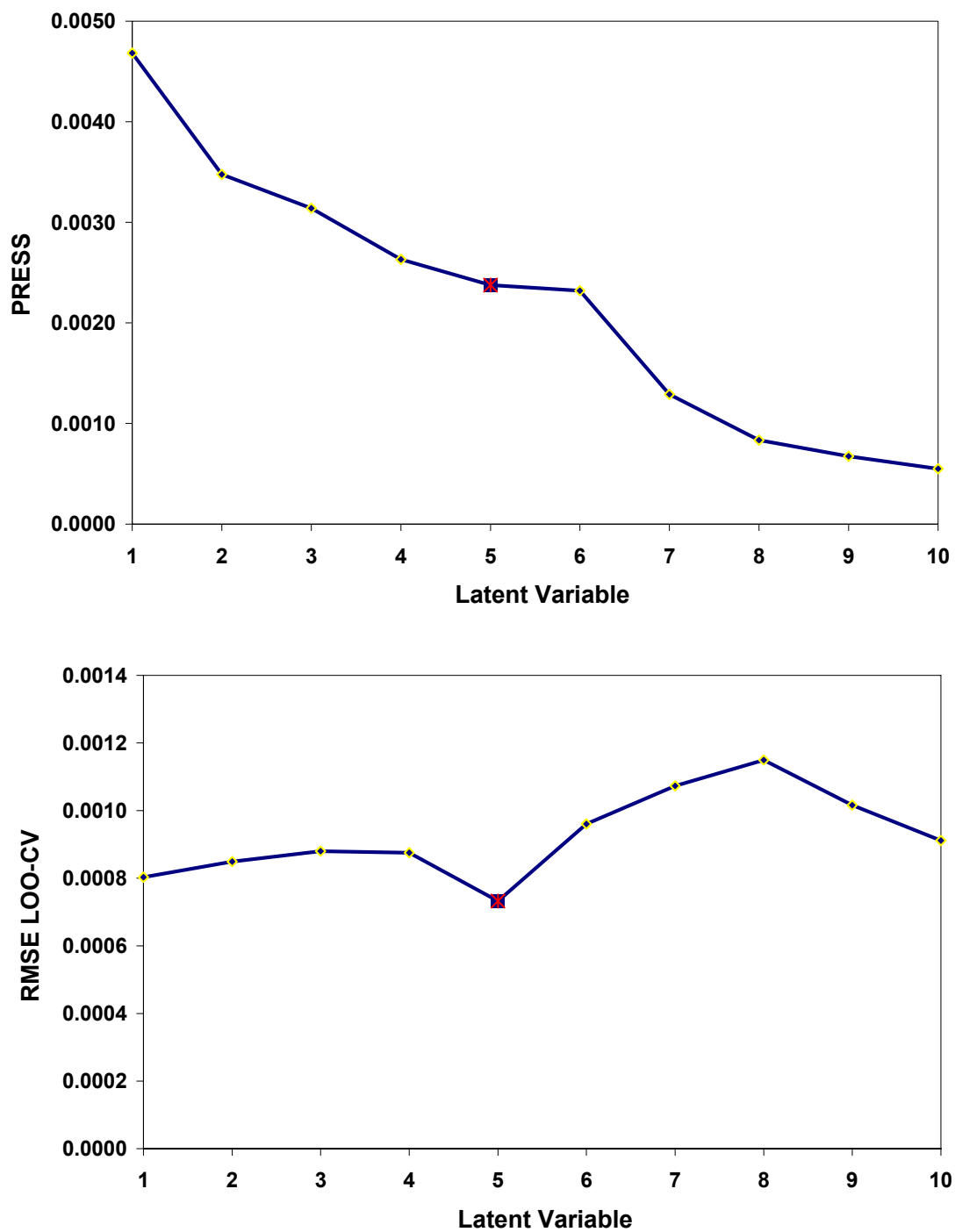


Fig. S3. Determination of the number of PLS latent variables.

Supplementary Material (ESI) for Analyst
This journal is © The Royal Society of Chemistry 2010