

Supplementary information:

Fig. S1. Nano-ESI-Q-TOF mass characterization of tryptic digest mixtures of α -casein (4×10^{-6} M) and IgG (12×10^{-6} M) with volume ratio of 1:1 fractions from ZrO₂(24)/MCF rinsed or eluted successively with the solvents of different CH₃CN and acid/basic concentrations. Mass spectra of a) desalted by C18, b) fraction eluted with CH₃CN/H₂O/FA (60:40:0.3 (v/v), 90 μ L), c) fraction eluted with H₂O/TFA (95:5 (v/v), 60 μ L), and d) fraction eluted with 2% NH₃·H₂O (30 μ L). Glycopeptide and phosphopeptide peaks are labeled with ▼ and ◆, respectively.

Fig. S2. Nano-ESI-Q-TOF mass characterization of tryptic digest mixtures of α -casein (4×10^{-6} M) and IgG (12×10^{-6} M) with volume ratio of 10:1 fractions from ZrO₂(24)/MCF rinsed or eluted successively with the solvents of different CH₃CN and acid/basic concentrations. Mass spectra of a) desalted by C18, b) fraction eluted with CH₃CN/H₂O/FA (60:40:0.3 (v/v), 90 μ L), c) fraction eluted with H₂O/TFA (95:5 (v/v), 60 μ L), and d) fraction eluted with 2% NH₃·H₂O (30 μ L). Glycopeptide and phosphopeptide peaks are labeled with ▼ and ◆, respectively.

Fig. S1.

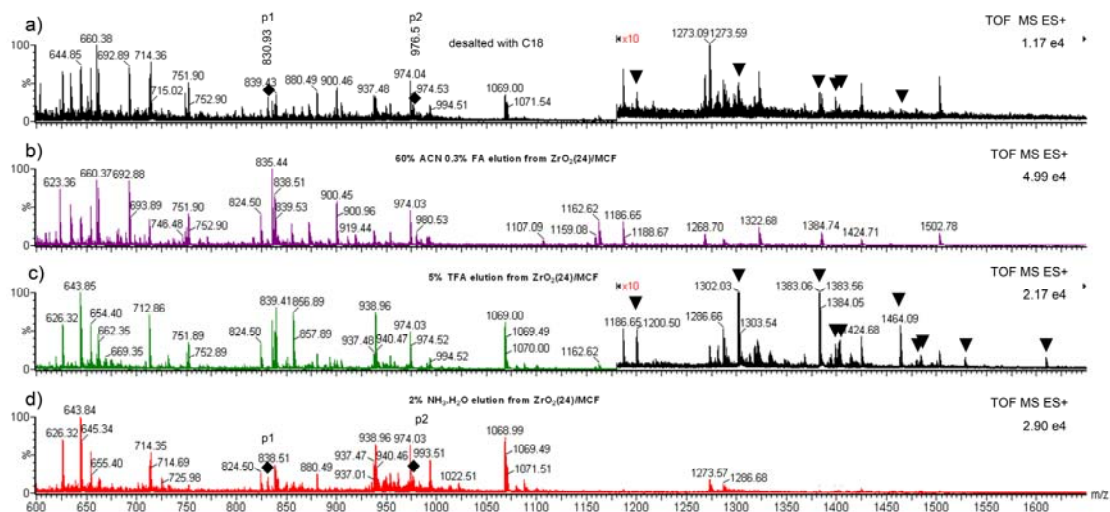


Fig. S2.

