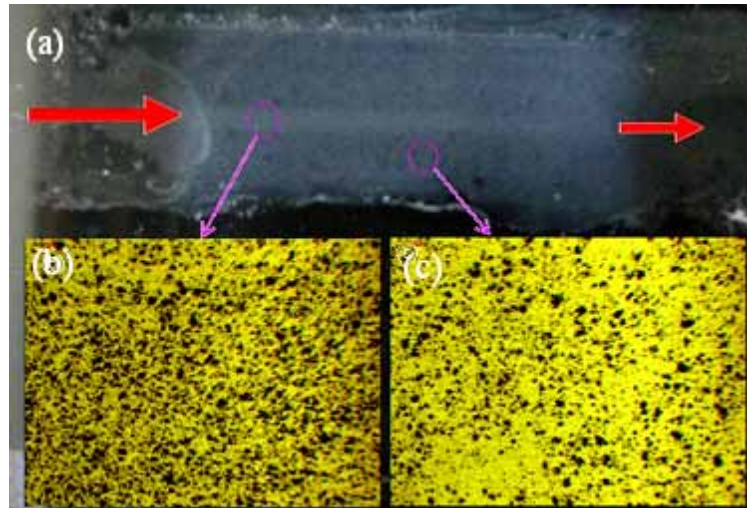


(Electronic Supplementary information)

## Determination of surface protein coverage by composite waveguide based polarimetric interferometry

Dan-feng Lu, Zhi-mei Qi



**Fig. S1** (a) Photopicture of the  $\text{Ta}_2\text{O}_5$ -layer surface of the COWG taken after the immunoreaction detection (a bright streak appears on the surface of the  $\text{Ta}_2\text{O}_5$  layer along the mode-propagating path indicated by the arrows, and the streak gradually becomes thin with increasing the propagation path length.),

(b) and (c) the optical microscope images of the two surface areas selected on the streak and far from the streak.