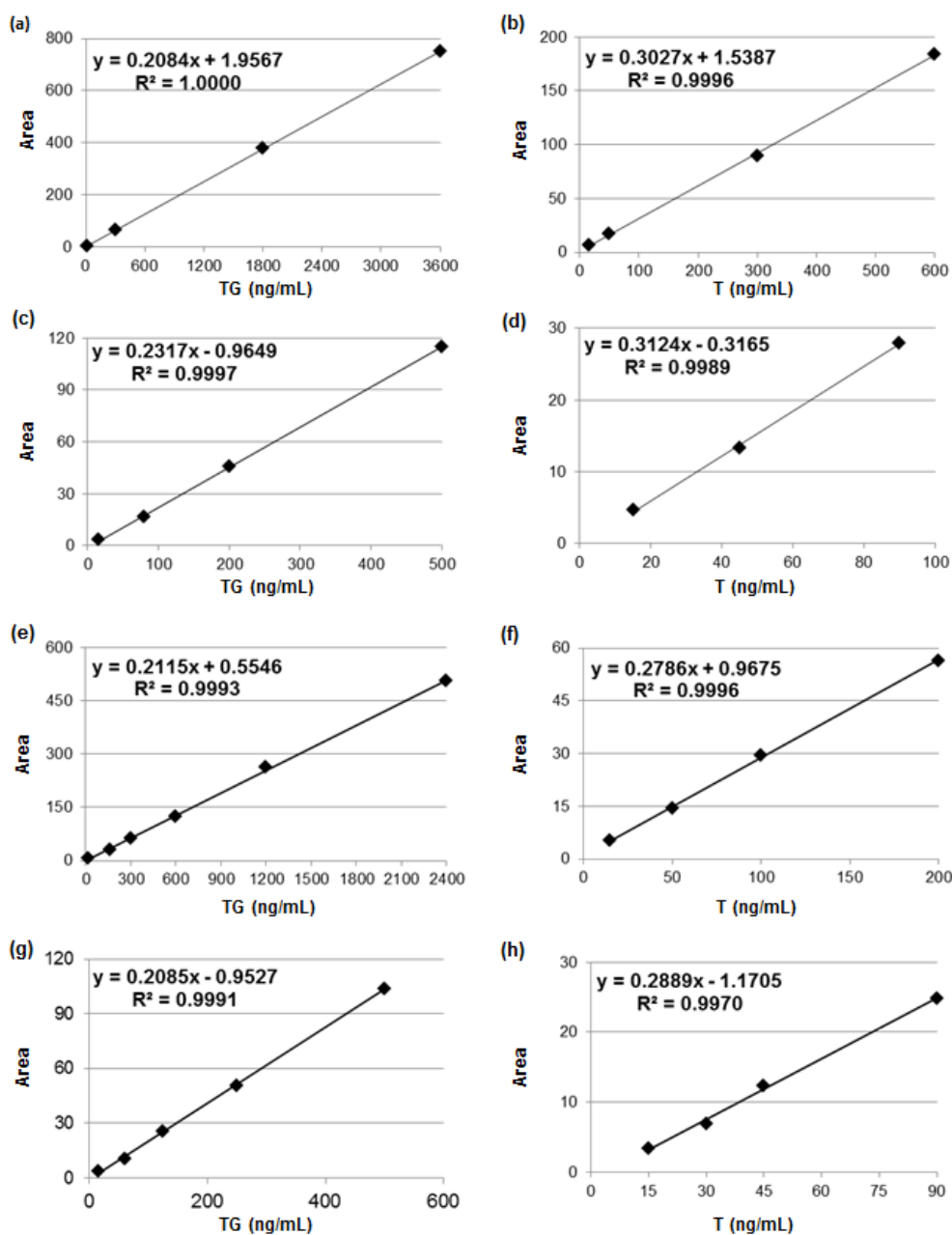


## Electronic Supplementary information:

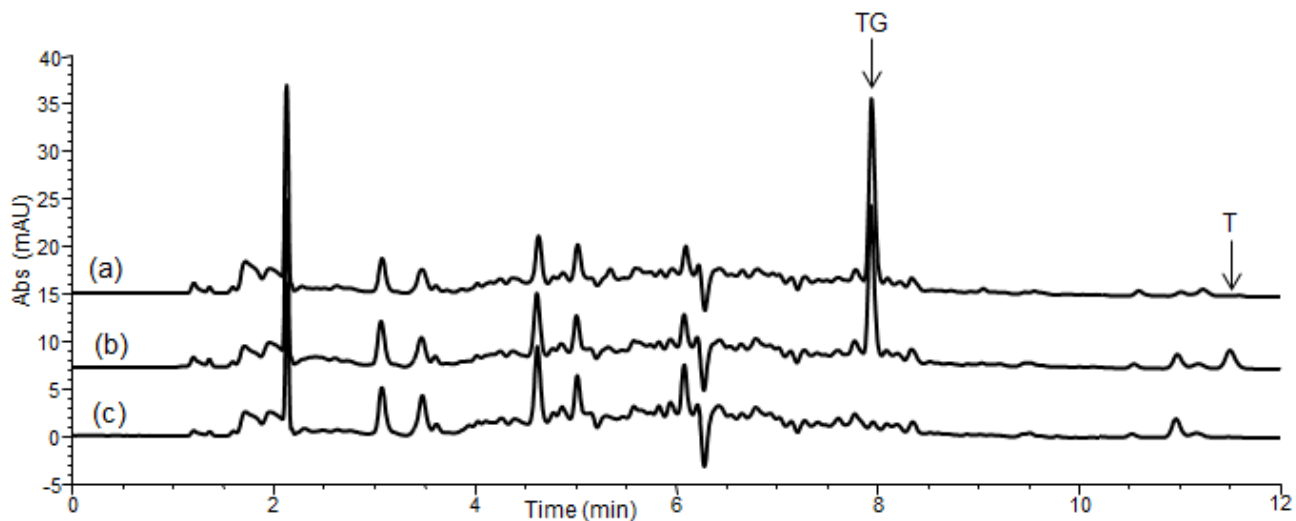
### Glucuronide directed molecularly imprinted solid-phase extraction: Isolation of testosterone glucuronide from its parent drug in urine

Serena Ambrosini, Sudhirkumar Arjun Shinde, Ersilia De Lorenzi and Borje Sellergren.

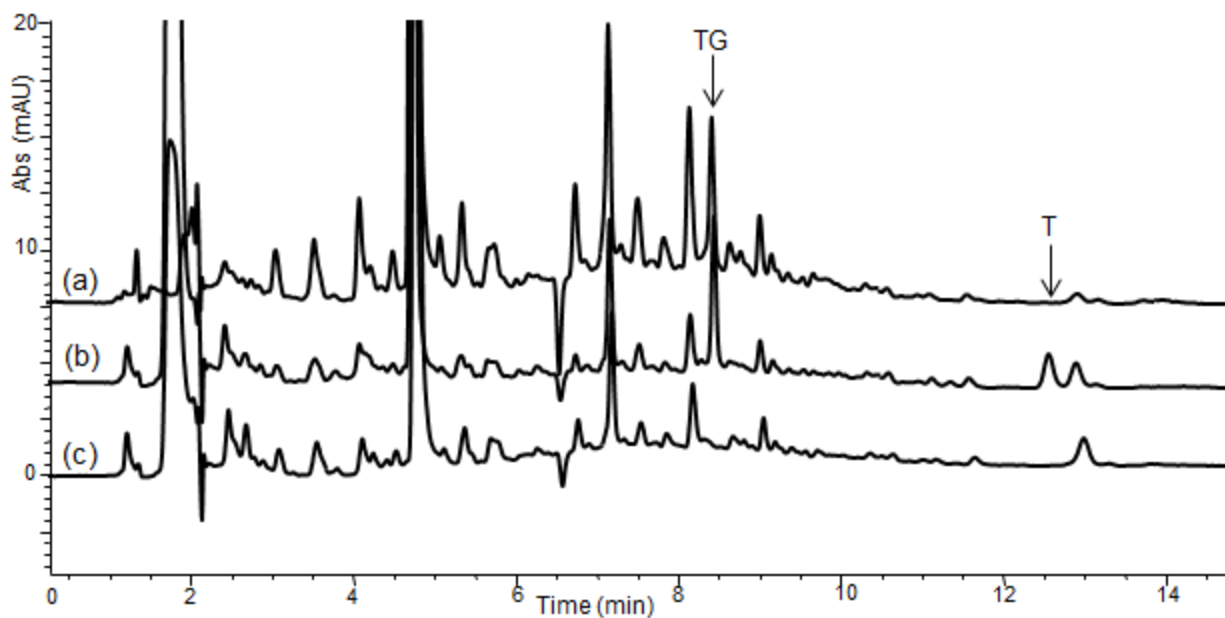


**Fig. S1** External linear calibration curves in artificial urine spiked with TG or T for quantification (a,b) on MIP 1 cartridge and (c,d) MIP 2 cartridge.

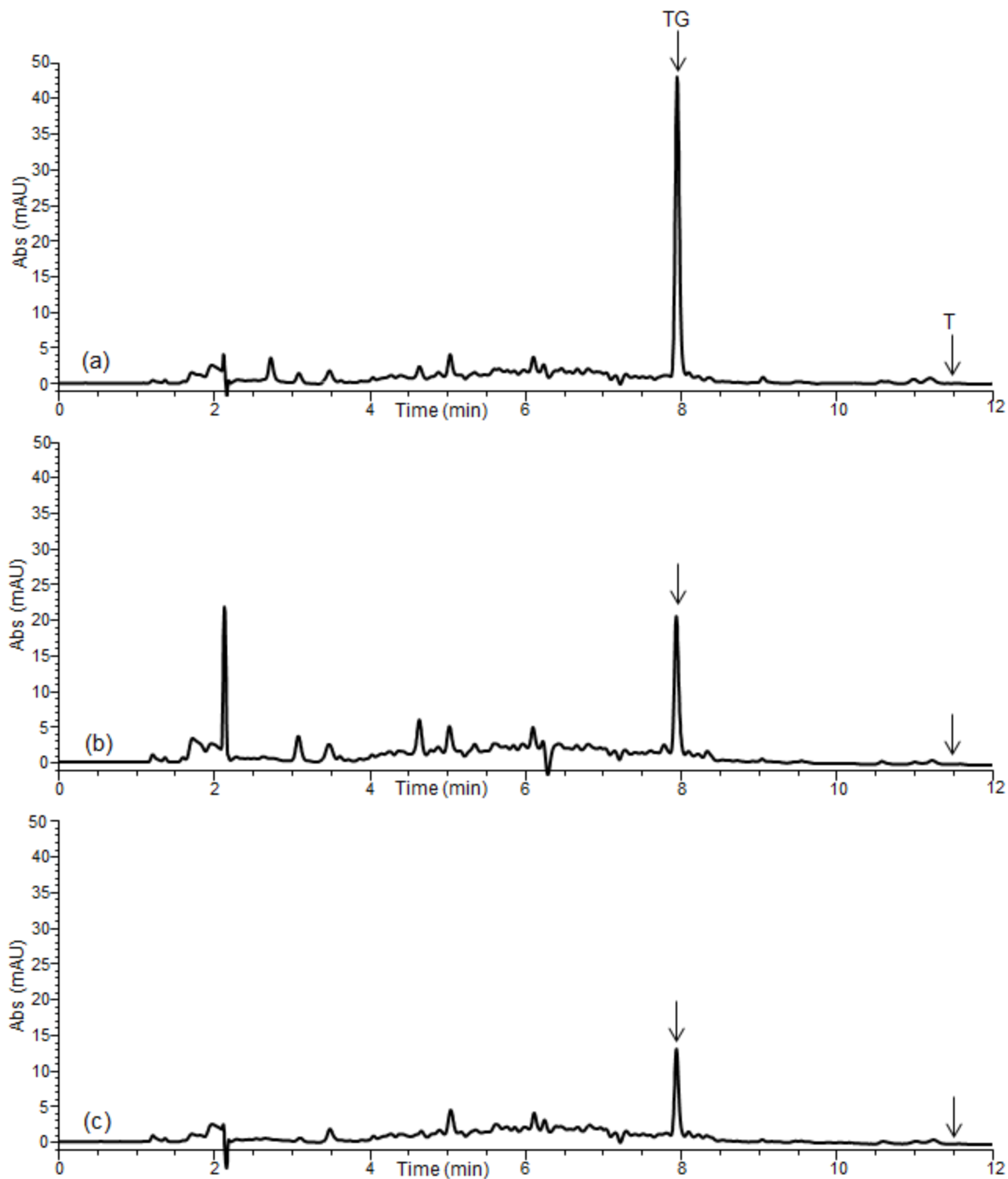
External linear calibration curves in real urine spiked with TG or T for quantification (e,f) on MIP 1 cartridge and (g,h) MIP 2 cartridge.



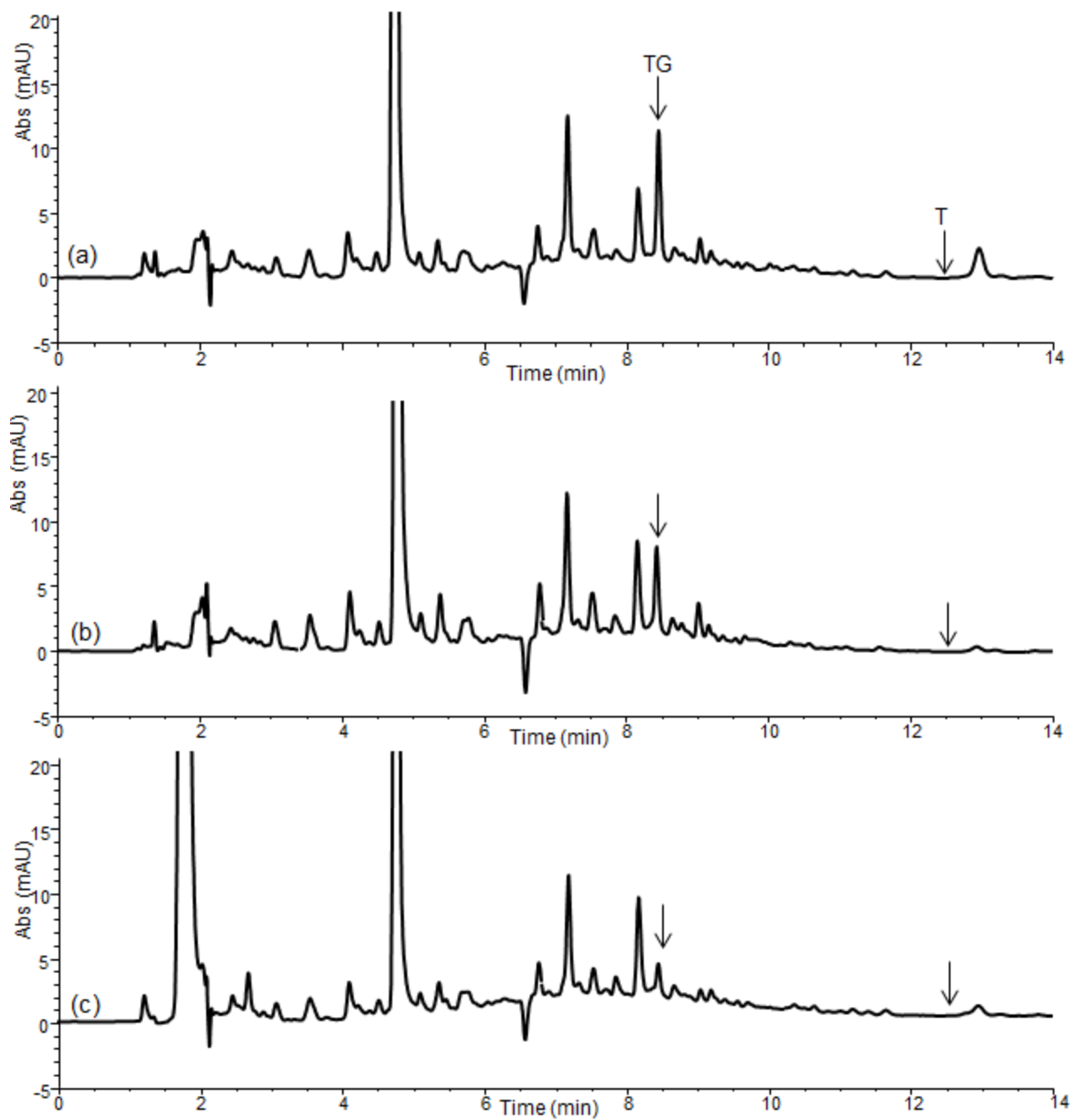
**Fig. S2** (a) Urine spiked with TG (300 ng/mL) and T (50 ng/mL) and extracted on MIP1; (b) blank urine extracted on MIP1 and then spiked; (c) blank urine extracted on MIP1.



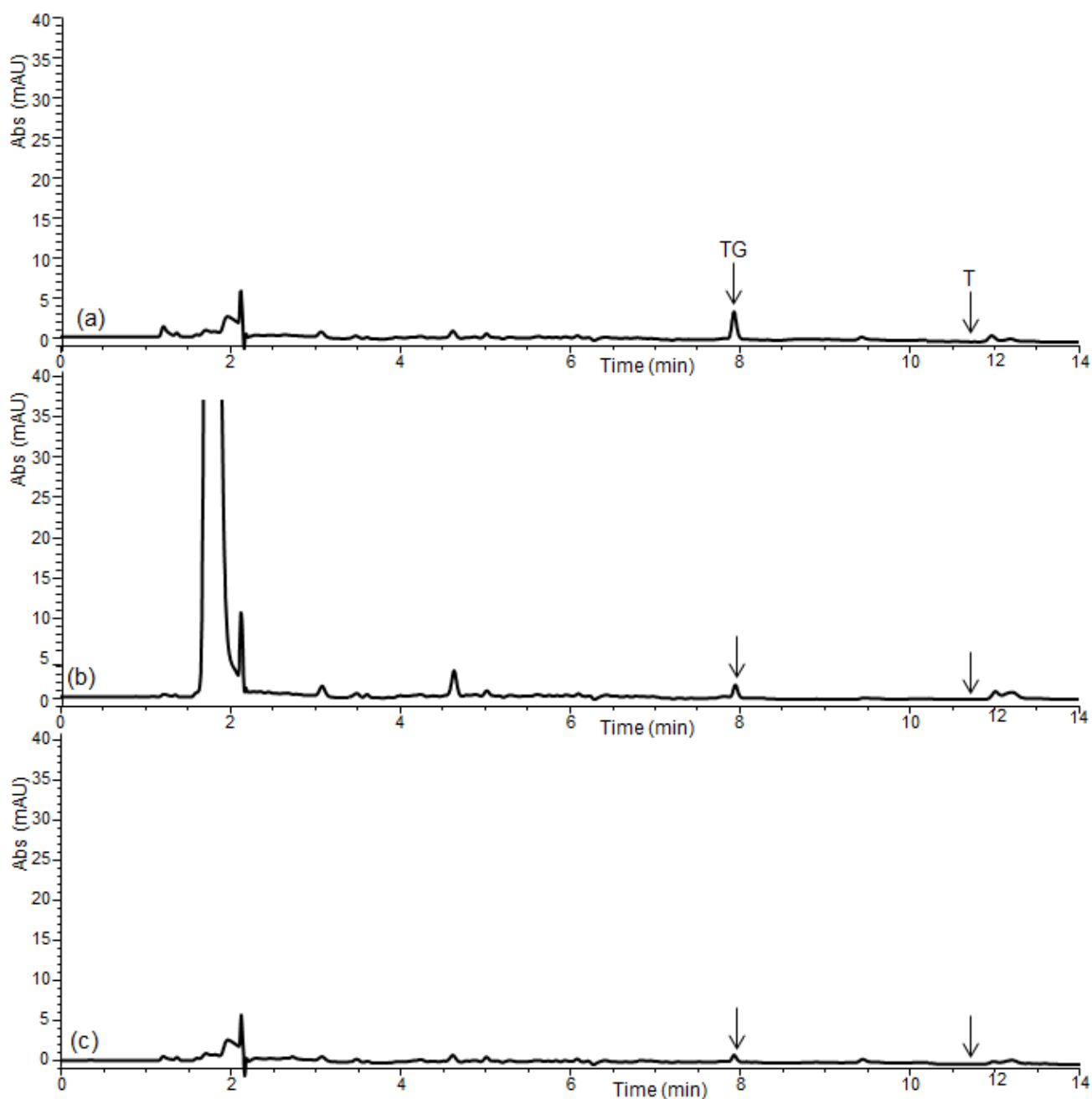
**Fig. S3** (a) Urine spiked with TG (300 ng/mL) and T (50 ng/mL) and extracted on MIP2; (b) blank urine extracted on MIP2 and then spiked; (c) blank urine extracted on MIP2.



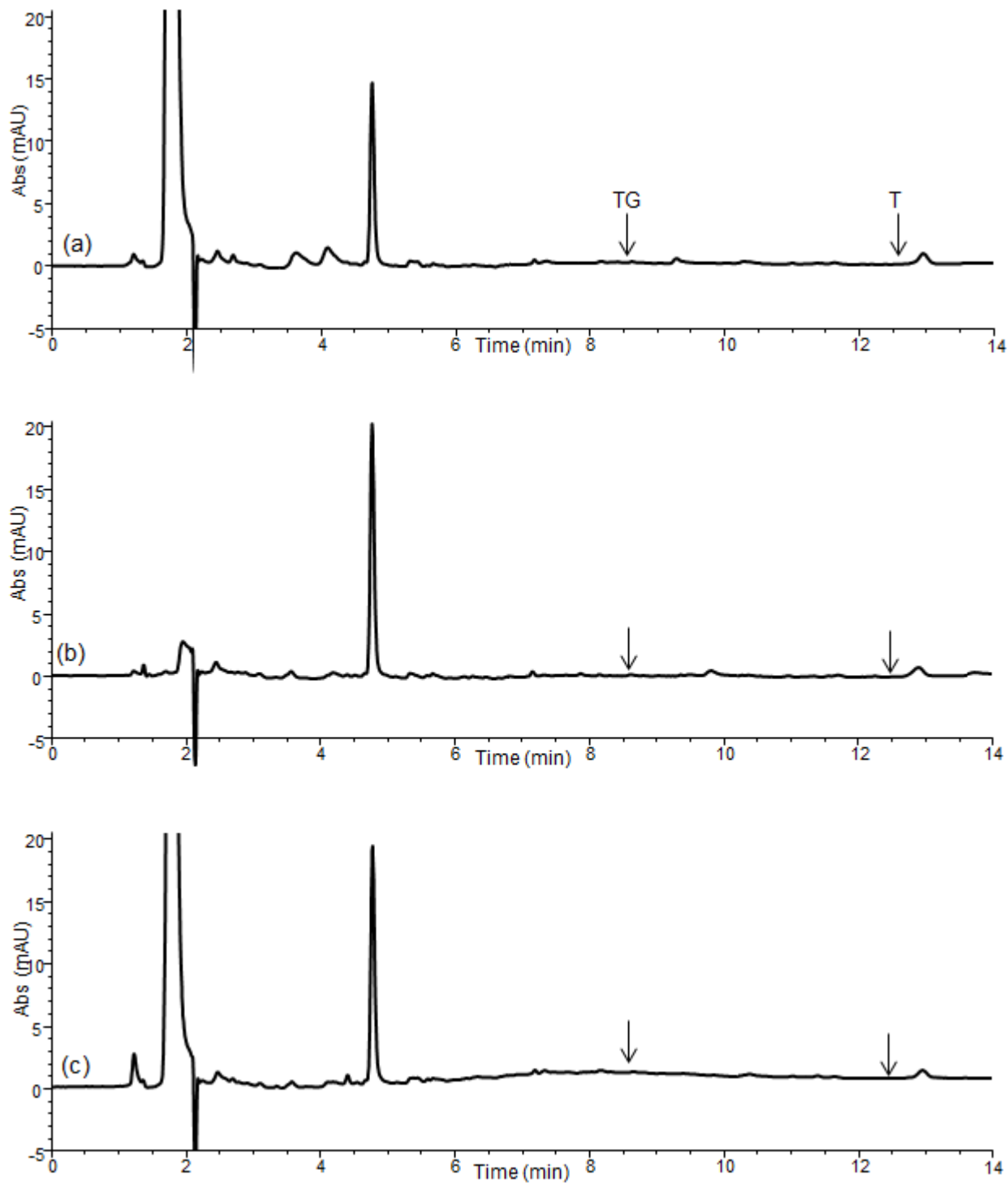
**Fig. S4** Chromatograms of urine spiked at (a) high, (b) medium and (c) low concentration level after MISPE on MIP1.



**Fig. S5** Chromatograms of urine spiked at (a) high, (b) medium and (c) low concentration level after MISPE on MIP2.



**Fig. S6** Chromatograms of urine spiked at (a) high, (b) medium and (c) low concentration level after MISPE on NIP1.



**Fig. S7** Chromatograms of urine spiked at (a) high, (b) medium and (c) low concentration level after MISPE on NIP2.