
High Throughput Plasma N-Glycome Profiling using Multiplexed Labelling and UPLC with Fluorescence Detection.

Ana Knežević, Jonathan Bones, Stjepan Krešimir Kračun, Olga Gornik, Pauline M. Rudd and Gordan Lauc

Supplementary Information

Figure S1: Normalised overlay for the separation of aniline labelled malto-oligomers across all three detection channels.

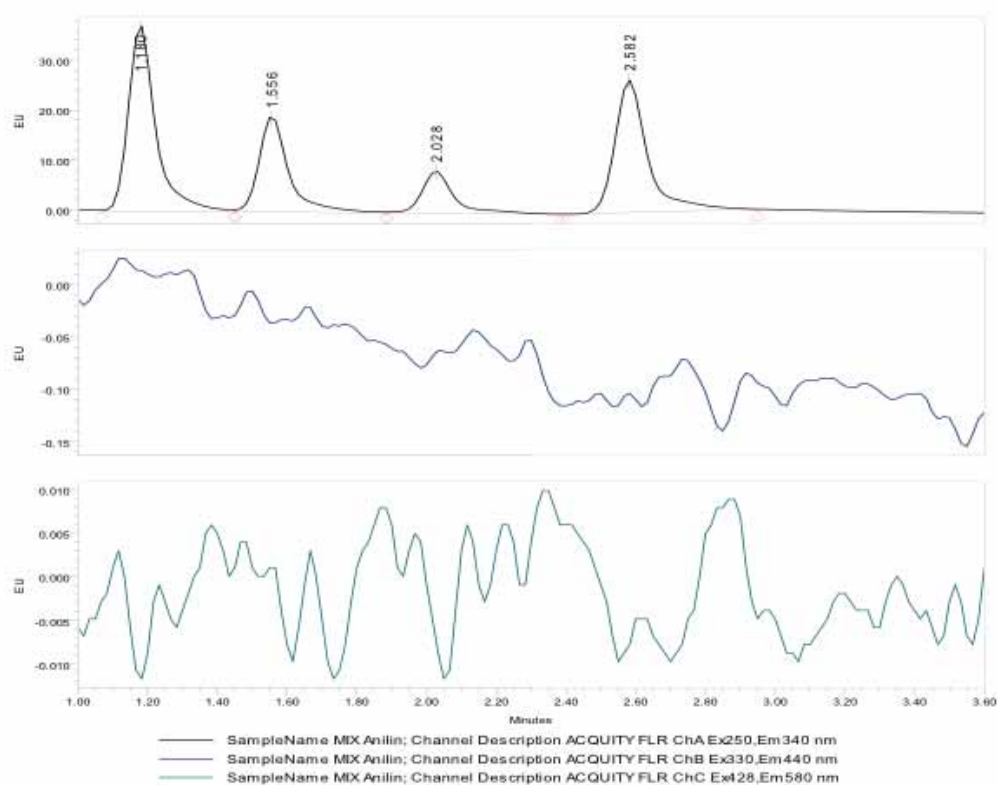


Figure S2: Normalised overlay for the separation of 2-aminobenzamide labelled malto-oligomers across all three detection channels.

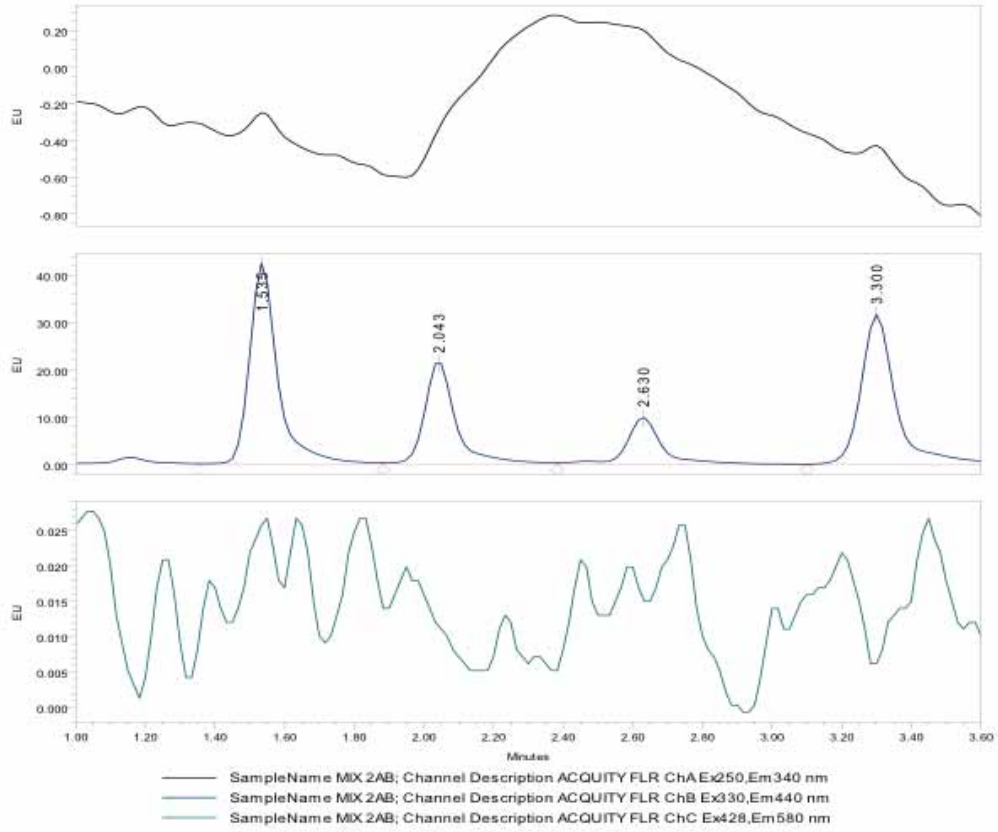


Figure S3: Normalised overlay for the separation of 2-aminoacridone labelled malto-oligomers across all three detection channels.

