

Electronic Supplementary Information (ESI)

Direct SERS detection of contaminants in a complex mixture: Single step screening for melamine in infant formula

Jordan F. Betz,^{a,b} Yi Cheng^b and Gary W. Rubloff^{*b,c}

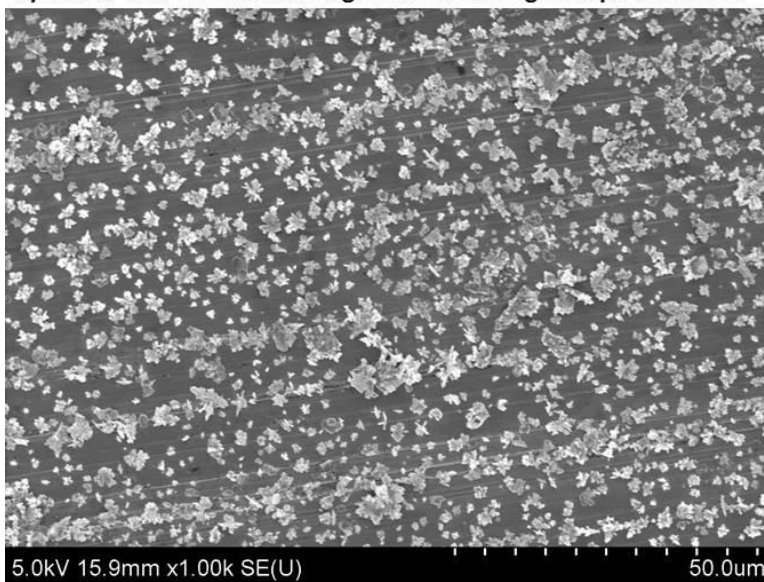
^a Fischell Department of Bioengineering, University of Maryland, College Park, MD, USA.

^b Institute for Systems Research, University of Maryland, College Park, MD, USA.

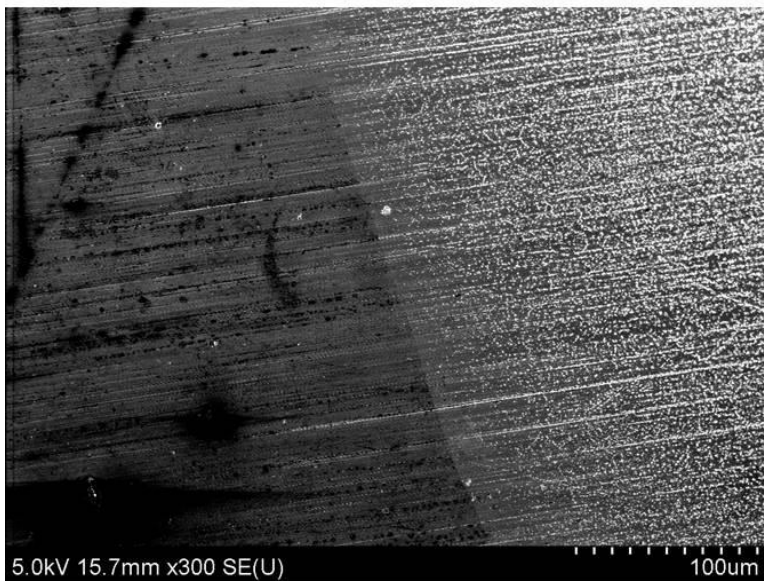
^c Department of Materials Science and Engineering, University of Maryland, College Park, MD, USA.

* Corresponding author information: Fax: +01 301-314-9920; Tel: +01 301-405-3011; E-mail: rubloff@umd.edu

a) Micro- and nanostructure growth following Cu tape striations



b) Lower magnification image showing growth along striations



Supplementary Figure 1 Scanning electron micrographs of the substrate created on Cu tape. Micro- and nanostructure growth is observed to align with the surface striations on the Cu tape which presumably arise during the manufacturing and processing of the tape itself.