

SUPPLEMENTARY INFORMATION

Figure S1. Excitation and emission fluorescence spectra (A) and HTEM image (B) of the synthesized CdSe/ZnS QDs.

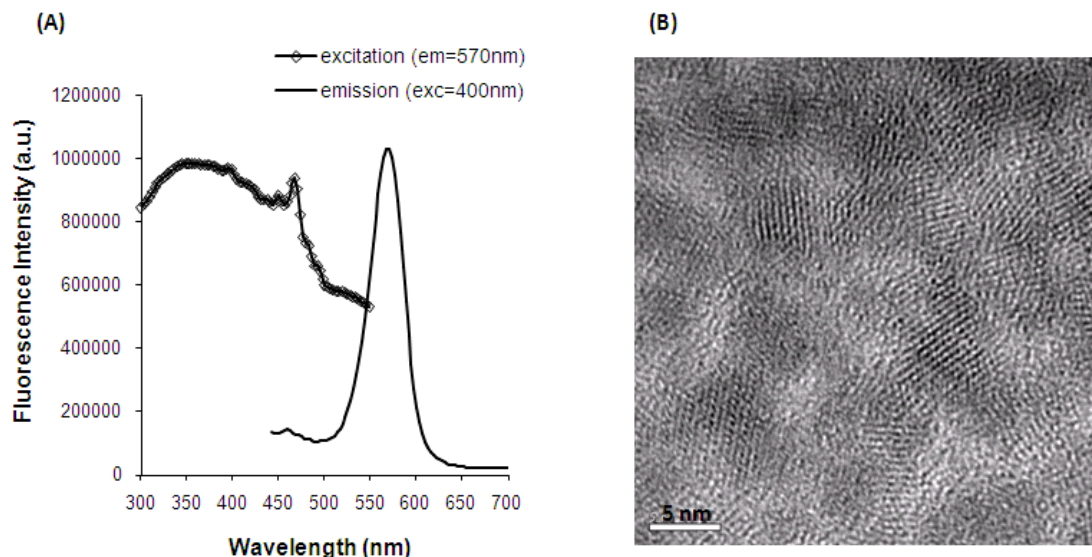


Figure S2. Effect of several variables on the fluorescence enhancing response for the extraction of a working standard solution of TMA at $0.5 \text{ mg}\cdot\text{L}^{-1}$: (A) Effect of the QD/IL proportion; (B) Effect of drop volume proportion; and (C) Effect of extraction time. In all cases, the analytical signal was $\Delta I = (I - I_0)/I_0$, where I_0 is the original fluorescence of the QD-IL and I the fluorescence when $0.5 \text{ mg}\cdot\text{L}^{-1}$ of TMA were extracted. (* instability of the drop).

