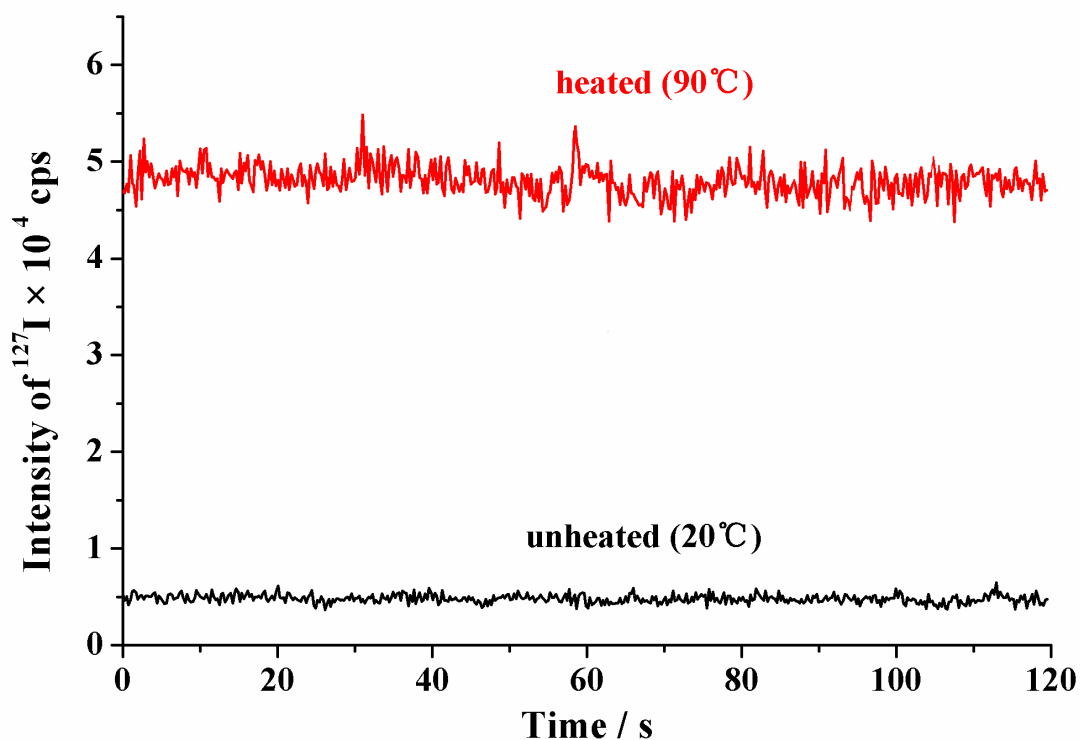
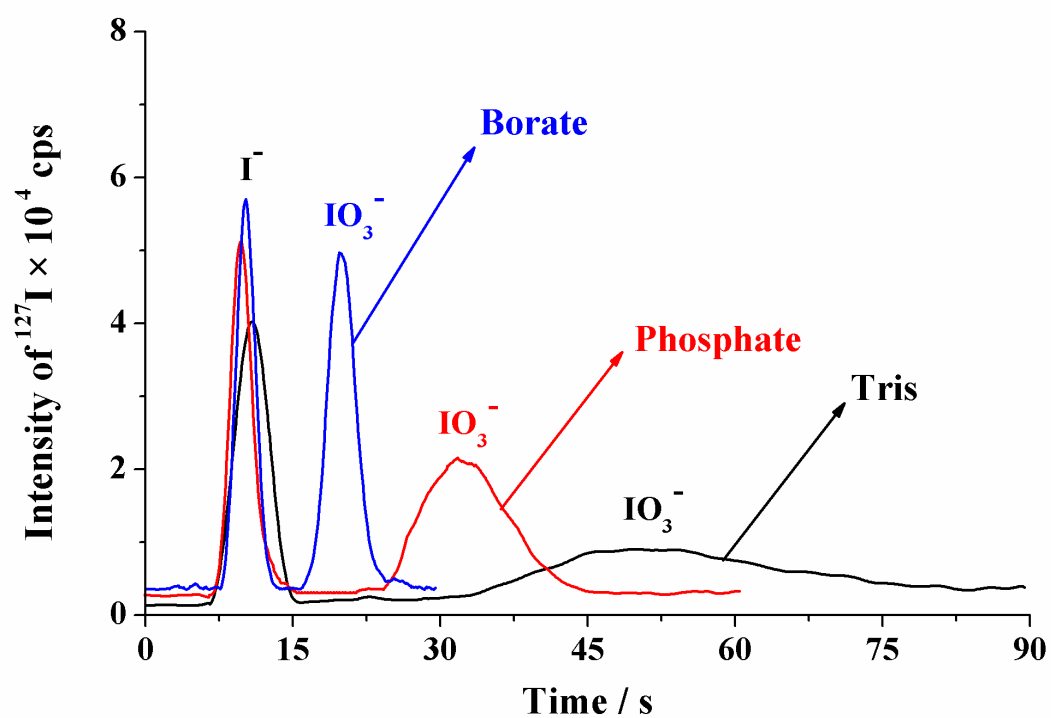


Electronic supplementary information (ESI) for the manuscript  
entitled “Elimination of suction effect in interfacing microchip  
electrophoresis with inductively coupled plasma mass  
spectrometry with porous monolithic plugs”



**Fig. S-1.** Intensities of  $^{127}\text{I}$  with the single pass spray chamber (20°C) and the heated pass spray chamber (90°C) over a period of 2 min.  $5 \mu\text{g}\cdot\text{L}^{-1}$  iodine at flow rate of  $10 \mu\text{L}\cdot\text{min}^{-1}$ .



**Fig. S-2.** Electrophoretic separation of  $\text{I}^-$  ( $0.2 \text{ mg}\cdot\text{L}^{-1}$ ) and  $\text{IO}_3^-$  ( $0.2 \text{ mg}\cdot\text{L}^{-1}$ ) in Tris, borate and phosphate buffers. An electric field of  $857 \text{ V}\cdot\text{cm}^{-1}$  was applied on the  $1.5 \text{ cm}$  separation channel. For other conditions, please see Table 1.