

Supporting Information

Electrochemiluminescent detection of Mucin 1 protein and MCF-7 cancer cell based on the resonance energy transfer

W. Wei, D. F. Li, X. H. Pan and S. Q. Liu*

*State Key Laboratory of Bioelectronics, School of Chemistry and Chemical
Engineering, Southeast University, Jiangning District 211189, Nanjing, Jiangsu
Province, P.R. China*

*Corresponding author: Tel: 86-25-52090613; Fax: 86-25-52090618.

E-mail addresses: liusq@seu.edu.cn (S. Q. Liu)

Fig. S1 FT-IR spectra of as-prepared GO.

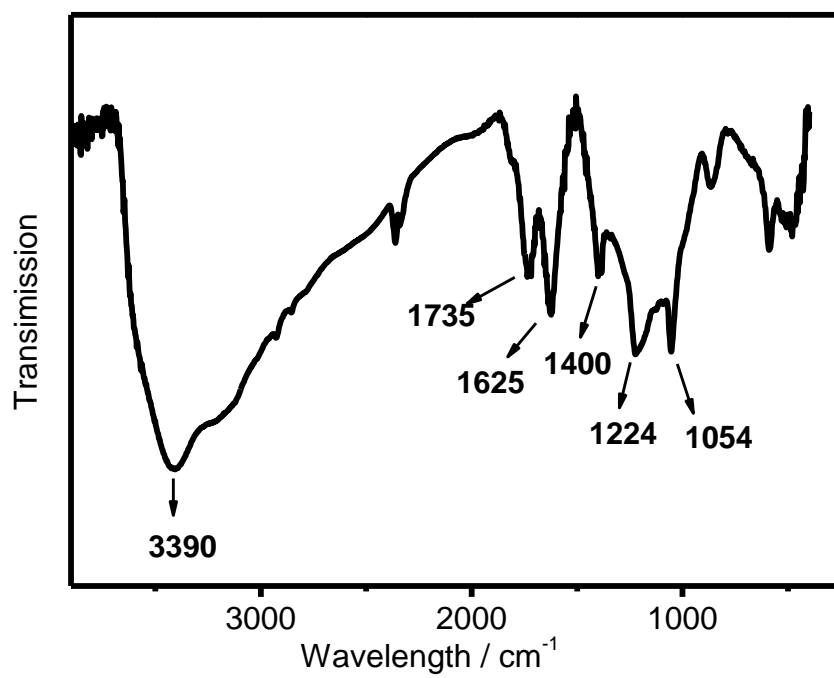


Fig. S2 Raman spectra of raw graphite (a) and GO (b).

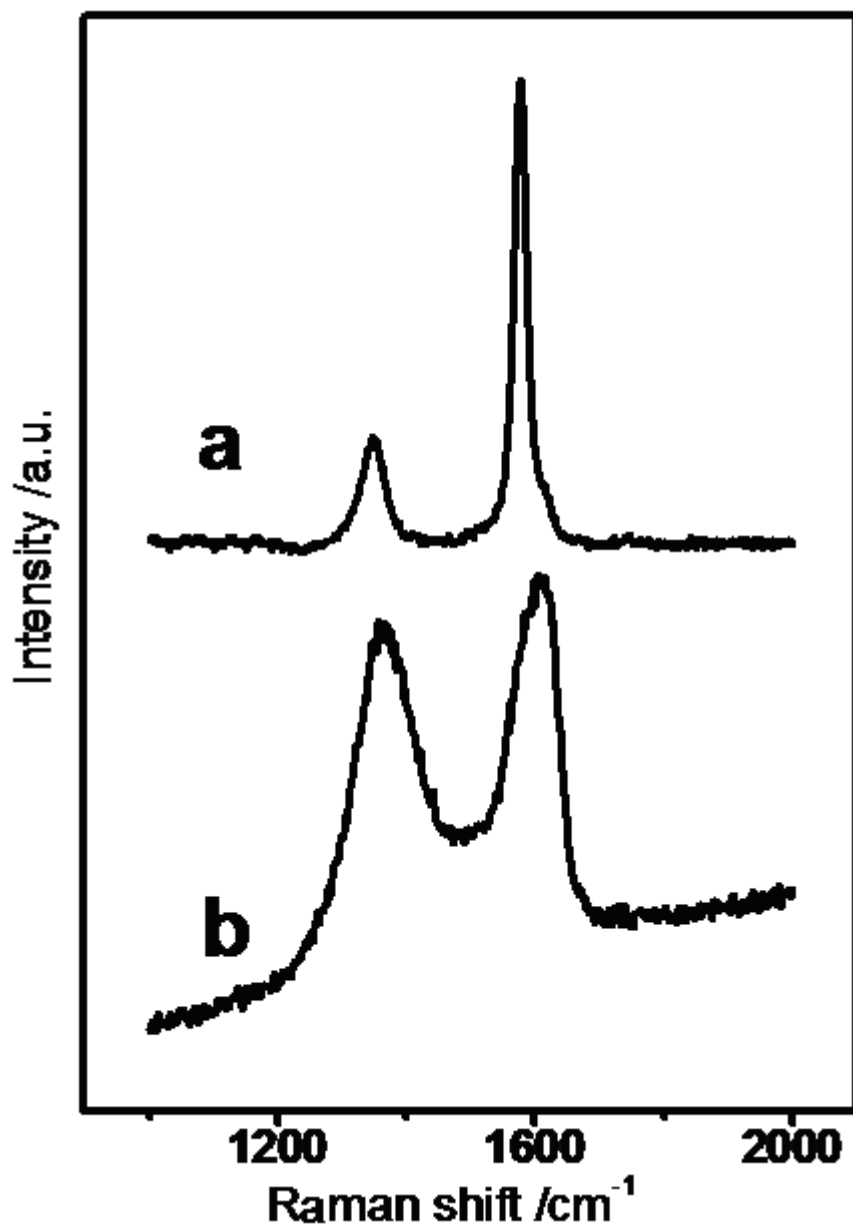


Fig. S3 Tapping mode AFM image of GO sheets deposited on mica substrate (A),
HRTEM images of GO sheets (B).

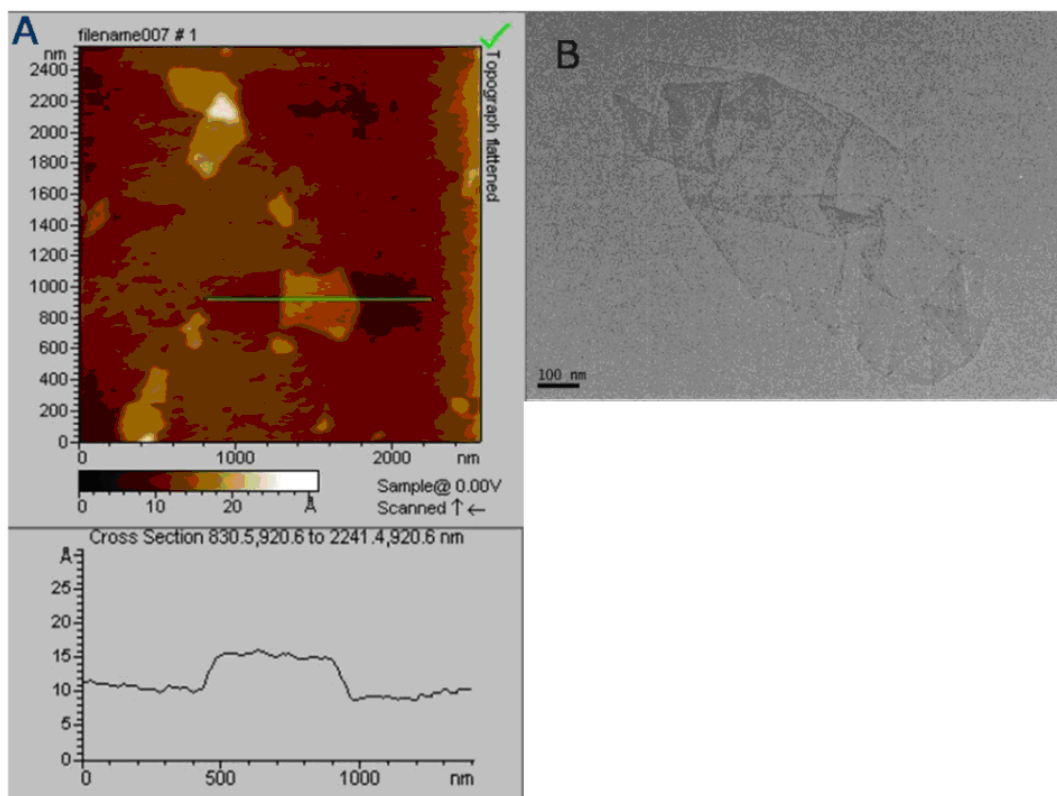


Fig. S4 ECL intensity of Ru1-aptamer (100 nM) incubated with different kinds of cells (25000 cells/mL) or culture solution, respectively, in the presence of 0.1 mg/mL GO.

